

SYNTAX score in relation to intravascular ultrasound and near-infrared spectroscopy for the assessment of atherosclerotic burden in patients with coronary artery

2

SYNTAX score in relation to intravascular ultrasound and near-infrared spectroscopy for the assessment of atherosclerotic burden in patients with coronary artery disease

Maxime M. Vroegindewey, Anne-Sophie Schuurman, Isabella Kardys, Sharda S. Anroedh, Rohit M. Oemrawsingh, Jurgen Ligthart, Hector M. Garcia-Garcia, Robert-Jan M. van Geuns, Evelyn Regar, Nicolas M. van Mieghem, Patrick W. Serruys, Eric Boersma, K. Martijn Akkerhuis

*These authors contributed equally.
EuroIntervention. 2019; 14:1408-1415.

ABSTRACT

Aims

To examine the relationship between the anatomical SYNTAX score (SXscore), derived from all three coronary arteries, and coronary wall pathology measured by radiofrequency-intravascular ultrasound (RF-IVUS) and near-infrared spectroscopy (NIRS) in a single non-culprit segment.

Methods and results

In patients referred for coronary angiography (N=88) or PCI (N=592) for stable angina or acute coronary syndrome, the SYNTAX score calculator (www.syntaxscore.com) was used to determine SXscore before PCI, if applicable. RF-IVUS and/or NIRS were performed in a non-stenotic 40 mm study segment following the clinically indicated angiography/PCI. After adjustment for multiple confounders, a higher SXscore was associated with higher segmental plaque volume in the study segment (2.21 mm³ per SXscore point, 95%CI 0.92-3.50, p-value 0.001), as well as with higher volume of fibrous (0.93 mm³ per point) and fibro-fatty tissue (0.29 mm³ per point). A higher SXscore was also associated with a higher NIRS-derived lipid core burden index in the full study segment (1.35 units per SXscore point, 95%CI 0.22-2.47, p-value 0.019). Importantly, SXscore correlated with the fatty/fibro-fatty and LCBI signals despite adjusting for plaque burden.

Conclusions

In patients with CAD, higher SXscores are associated with higher atherosclerotic burden as assessed by RF-IVUS and NIRS in a single non-stenotic coronary artery segment.

INTRODUCTION

The SYNTAX score (SXscore) is an angiographic tool that grades the complexity of coronary artery disease (CAD) and is also used for short- and long-term prediction of major adverse cardiac events (MACE) in patients undergoing percutaneous coronary intervention (PCI) and/or coronary artery bypass graft surgery (CABG).(1-2) The severity and composition of coronary atherosclerosis as assessed by (radiofrequency-)intravascular ultrasound (RF-IVUS) and near-infrared spectroscopy (NIRS) in *one* (non-)stenotic coronary artery segment have recently also shown prognostic value for MACE.(3-8) Furthermore, RF-IVUS and NIRS in one (non-)stenotic coronary artery segment have previously been used to evaluate the effects over time of anti-atherosclerotic therapy under the assumption that these assessments are representative of the total coronary atherosclerotic burden.(9) However, it has never been investigated in a large cohort how well the atherosclerotic burden as graded by NIRS and RF-IVUS measured in one (non-) stenotic coronary artery segment correlates with the atherosclerotic burden as assessed by the SXscore which is derived from all three coronary arteries.

It is important to realize that the three methods differ from each other in the assessment and quantification of CAD. The SXscore is an anatomical scoring tool that grades luminal coronary obstruction, directly from the coronary angiography (CAG). Therefore, it lacks detail with respect to coronary artery wall pathology. Conversely, RF-IVUS and NIRS have been shown to provide information on plaque morphology in the imaged coronary segment. However, both of these imaging techniques require additional intracoronary catheters, whereas the SXscore itself does not require instrumentation of the coronary lumen.

The aim of this study is to examine the relationship between the coronary atherosclerotic burden measured as luminal coronary obstruction graded by the SXscore, derived from all three coronary arteries, and the atherosclerotic burden by assessing coronary artery wall pathology measured by RF-IVUS and NIRS in one non-stenotic segment of a single non-culprit coronary artery.

METHODS

Study population

This study constitutes a combined analysis of two cohorts: The European Collaborative Project on Inflammation and Vascular Wall Remodeling in Atherosclerosis-IVUS (ATHEROREMO-IVUS) study and the Integrated Biomarker and Imaging Study-3 (IBIS-3). The design of both studies has been described elsewhere.(9-11) In total, 770 patients with an indication for diagnostic CAG and/or PCI due to either stable angina pectoris (SAP) or an acute coronary syndrome (ACS) were included and had a RF-IVUS and/or NIRS performed in a non-stenotic segment of a non-culprit coronary artery.

Both studies were approved by the Medical Ethics Committee of the Erasmus MC and performed in accordance with the Declaration of Helsinki. Written informed consent was obtained from all included patients. ATHEROREMO-IVUS is registered in ClinicalTrials.gov, number NCT01789411, and IBIS-3 is registered in The Netherlands trial register, number NTR2872.

Coronary intravascular ultrasound and near-infrared spectroscopy

RF-IVUS and NIRS methods have been described in detail previously. (9-11) For a comprehensive methods section, refer to the *Supplementary Methods*.

SYNTAX Score

The SXscore was calculated (pre-PCI) for every CAG taken at study entry using the SYNTAX Score calculator (www.syntaxscore.com). Details concerning the calculation of the SXscore have been described elsewhere. (1) In brief, the three coronary arteries are divided in 16 segments, each with a corresponding weighting factor. If there is a lesion producing 50% or more luminal obstruction, the weighting factor is added. Moreover, other factors that reflect the severity of the atherosclerotic lesion and the possible difficulty of a percutaneous treatment, for example lesion length and diffuse disease of the vessel, are taken into account. Eventually, all points are summed to obtain the SXscore reflecting the complexity of the CAD of the patient.

As applied in other all-comers and ST-segment elevation myocardial infarction (STEMI) populations, lesions caused by in-stent restenosis were considered as de novo lesions.(12-14) Occlusions in patients presenting with ACS were scored as occlusions of unknown duration, as the analyst was blinded to all other patient information.(15)

In case of a codominant coronary artery circulation, the vessel mainly responsible for the perfusion of the posterior side of the heart was designated as the dominant coronary artery. Last, patients with a pre-existing CABG, whose CAG is unquantifiable using the SXscore, were excluded.

The SXscores were determined by a trained analyst who was blinded with respect to other patient characteristics and clinical outcome.

STATISTICAL ANALYSIS

Categorical variables are presented as numbers and percentages. The distribution of the continuous variables, including RF-IVUS and NIRS parameters, was examined for normality with Kolmogorov-Smirnov tests. Normally-distributed continuous variables are presented as mean \pm standard deviation (SD). Non-normally distributed continuous variables are presented as median and interquartile range (IQR). SXscores were categorized into tertiles based on the distribution of the SXscores in the particular group that was being examined. Kruskal-Wallis tests were used for multiple group comparison of continuous variables. Categorical variables were compared using Pearson Chi-square tests or Fisher-Freeman-Halton Exact tests when appropriate.

Linear and logistic regression analyses were applied to evaluate the relation between SXscore (explanatory) and RF-IVUS- and NIRS-derived (dependent) variables. Variables concerning plaque volume were first normalized for the imaged segment length (i.e. normalized plaque volume=plaque volume / imaged segment length*median segment length of study population). In multivariable analyses, age, gender, hypertension, renal impairment, hypercholesterolemia, diabetes mellitus, smoking, indication for CAG, history of PCI, as well as segmental plaque burden were entered as potential confounders/explanatory factors. Thus, the models allow to conclude on the relation between SXscore and the RF-IVUS/NIRS imaging signals, irrespective of the patient's segmental plaque burden. Assumptions underlying linear regression models were evaluated by visual examination of the residuals.

All statistical tests were 2-tailed and p-values <0.05 were considered significant. SPSS, Version 21.0 (IBM Corp., Armonk, NY, USA) was used for all the analyses.

RESULTS

Baseline characteristics

The current study included 680 patients from the combined ATHEROREMO-IVUS and IBIS-3 cohorts (Figure 1). The overall SXscore ranged from 0 to 37.5 with a median of 7 (IQR:3-13) and a mean of 8.6 ± 7.4 . Baseline clinical and angiographic variables were stratified according to tertiles reflecting the obtained Sxscores (lowest tertile, ≤ 4 ; middle tertile, >4 to ≤ 10 ; highest tertile >10 , Table 1). The highest tertile comprised more men. As expected, more patients in the higher tertiles exhibited 2-or 3-vessel disease, whereas no significant stenosis or 1-vessel disease was more frequently present in patients with the lowest Sxscores. More patients with lower Sxscores had previously undergone a PCI.

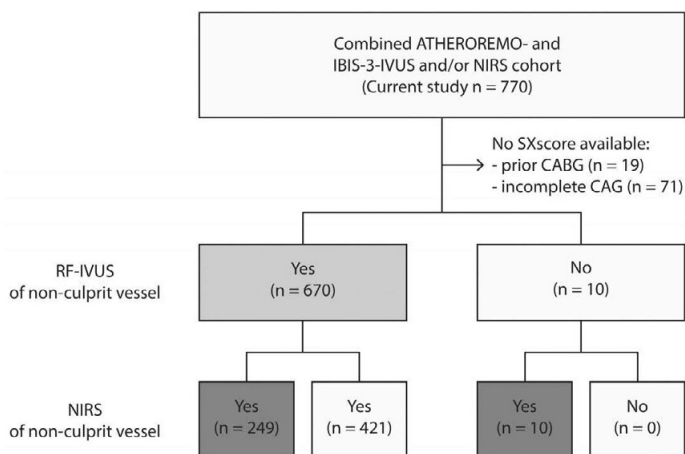


Figure 1. Patient inclusion

RF-IVUS is available in 670 patients (light grey) and NIRS is available in 259 patients (dark grey). ATHEROREMO-IVUS: The European Collaborative Project on Inflammation and Vascular Wall Remodeling in Atherosclerosis-IVUS study, IBIS-3: Integrated Biomarker and Imaging Study-3, NIRS: near-infrared spectroscopy, RF-IVUS: radiofrequency intravascular ultrasound, SXscore: SYNTAX score

Coronary intravascular ultrasound in relation to SXscore

After adjustment for multiple confounders/explanatory factors, a higher SXscore was associated with a higher plaque volume in the study segment (2.21 mm³ per SXscore point, 95%CI 0.92-3.50, p-value 0.001) (Table 2). The relation between SXscore and plaque burden was consistent with this observation, although statistically non-significant (p-value 0.078). A higher SXscore was also associated with a

Table 1. Baseline characteristics

	Low SXscore	Mid SXscore	High SXscore	p-value
	≤4 (n=236)	>4 to ≤10 (n=221)	>10 (n=223)	
<i>Patient characteristics</i>				
Age, years	60.4±10.9	61.3±10.7	61.2±11.0	0.70
Men, n(%)	169(71.6)	169(76.5)	184(82.5)	0.022
<i>Risk factors</i>				
Diabetes Mellitus, n(%)	48(20.3)	42(19.0)	40(17.9)	0.79
Hypertension, n(%)	130(55.1)	130(58.8)	107(48.0)	0.064
Hypercholesterolemia, n(%)	119(50.4)	138(62.4)	118(52.9)	0.028
Smoking, n(%)	63(26.7)	66(29.9)	70(31.4)	0.55
<i>History</i>				
Positive family history, n(%)	138(58.5)	117(52.9)	101(45.3)	0.018
Previous myocardial infarction, n(%)	79(33.5)	59(26.7)	61(27.4)	0.21
Previous PCI, n(%)	94(39.8)	63(28.5)	52(23.3)	<0.001
Previous stroke, n(%)	15(6.4)	12(5.4)	15(6.7)	0.84
History of peripheral artery disease, n(%)	12(5.1)	19(8.6)	14(6.3)	0.31
History of renal insufficiency, n(%)	13(5.5)	10(4.5)	11(4.9)	0.89
History of heart failure, n(%)	8(3.4)	4(1.8)	5(2.2)	0.56
<i>Procedural characteristics</i>				
Indication for coronary angiography				0.001
Stable angina, n(%)	130(55.1)	95(43.0)	88(39.5)	
Acute coronary syndromes, n(%)	106(44.9)	126(57.0)	135(60.5)	
Extent of coronary artery disease				<0.001
No significant stenosis, n(%)	91(38.6)	1(0.5)	0(0.0)	
1-vessel disease, n(%)	134(56.8)	138(62.4)	72(32.3)	
2-vessel disease, n(%)	11(4.7)	69(31.2)	114(51.1)	
3-vessel disease, n(%)	0(0.0)	13(5.9)	37(16.6)	
<i>Imaged coronary artery characteristics</i>				
Imaged segment length, mm	44.7±14.1	42.6±13.1	44.4±14.7	0.17
Imaged coronary artery for RF-IVUS				0.004
Left anterior descending, n(%)	107(46.7)	76(34.5)	64(28.8)	
Left circumflex, n(%)	58(25.1)	78(35.6)	81(36.5)	
Right coronary artery, n(%)	65(28.1)	65(29.9)	76(34.6)	
Imaged coronary artery for NIRS				0.003
Left anterior descending, n(%)	40(44.4)	34(39.1)	20(24.4)	
Left circumflex, n(%)	22(24.4)	36(41.4)	31(37.8)	
Right coronary artery, n(%)	28(31.1)	17(19.5)	31(37.8)	

CABG: coronary artery bypass graft, IQR: interquartile range, LCBI: Lipid Core Burden Index, NIRS: near-infrared spectroscopy, PCI: percutaneous intervention, RF-IVUS: (radiofrequency) intravascular ultrasound, SXscore: SYNTAX score

higher volume of fibrous (0.93 mm³ per SXscore point, 95%CI 0.53-1.33, p-value <0.001) and fibro-fatty tissue (0.29 mm³ per SXscore point, 95% CI 0.17-0.42, p-value <0.001) (Tables 2, Figure 2). Importantly, the SXscore correlated with the fatty/fibro-fatty signals despite adjusting for plaque burden. In contrast, we found no association between SXscore and necrotic core volume (p-value 0.16) or the presence of TCFA (p-value 0.46).

Table 2. Associations between the SYNTAX score and RF-IVUS and NIRS derived variables in multivariable analyses

RF-IVUS derived variables	Mean/OR (95%CI)			β/OR [†] (95% CI)	p-value [‡]
	SXscore ≤ 4	4 < SXscore ≤ 10	Sxscore > 10		
No. of patients	230	219	221	670	
Plaque volume, mm ³ [‡]	230.1 (215.7-244.4)	246.0 (222.3-269.6)	242.4 (228.8-276.1)	2.21 (0.92-3.50)	0.001
Plaque burden, % [‡]	38.1 (36.8-39.5)	38.8 (36.7-40.9)	39.0 (37.0-41.1)	0.10 (-0.011-0.22)	0.078
Plaque composition					
Fibrous, mm ³	61.4 (55.1-67.7)	68.0 (60.7-75.4)	72.6 (65.3-80.2)	0.93 (0.53-1.33)	<0.001
Fibro-fatty, mm ³	10.8 (9.3-12.3)	13.6 (11.3-15.9)	14.9 (12.6-17.2)	0.29 (0.17-0.42)	<0.001
Dense calcium, mm ³	13.3 (11.3-15.3)	14.3 (11.9-16.8)	13.9 (11.4-16.3)	0.023 (-0.11-0.16)	0.73
Necrotic core, mm ³	26.1 (22.8-29.3)	29.2 (25.7-32.6)	27.5 (24.0-30.9)	0.14 (-0.52-0.33)	0.16
Lesion morphology					
TCFA	1	0.97 (0.63-1.50)	0.81 (0.53-1.24)	0.99 (0.97-1.01)	0.46
MLA ≤4.0mm ² [‡]	1	0.74 (0.44-1.23)	0.95 (0.59-1.54)	1.00 (0.97-1.02)	0.80
Plaque burden ≥70% [‡]	1	1.05 (0.58-1.88)	1.47 (0.85-2.53)	1.02 (1.00-1.05)	0.092
NIRS-derived variables					
	SXscore ≤ 3	3 < SXscore ≤ 8	SXscore > 8		
No. of patients	90	87	82	259	
LCBI region of interest	39.4 (27.9-50.8)	56.0 (36.2-75.9)	62.7 (42.6-82.9)	1.35 (0.22-2.47)	0.019
LCBI worst 10 mm	118.1 (90.9-145.3)	150.3 (106.4-194.3)	176.9 (132.2-221.6)	2.89 (0.39-5.38)	0.024
LCBI worst 4 mm	190.4 (154.6-226.2)	231.3 (175.7-286.5)	266.6 (210.2-323.1)	3.83 (0.69-6.97)	0.017

We present means and odds ratios with 95%CI based on multivariable models with SX score included as categorical (explanatory) variable. In addition, we present β's and odds ratios with SX-score included as continuous (explanatory) variable. Multivariable models are adjusted for age, gender, hypertension, renal impairment, hypercholesterolemia, diabetes mellitus, smoking, indication for CAG, history of PCI and plaque burden.

[†] Based on multivariable models with SXscore included as continuous (explanatory) variable

[‡] Multivariable model without adjustment for plaque burden

CI: confidence interval, LCBI: lipid core burden index, MLA: minimum luminal area, NIRS: near-infrared spectroscopy, No: number, OR: odds ratio, RF-IVUS: radiofrequency intravascular ultrasound, SXscore: SYNTAX score, TCFA: thin-cap fibroatheromas

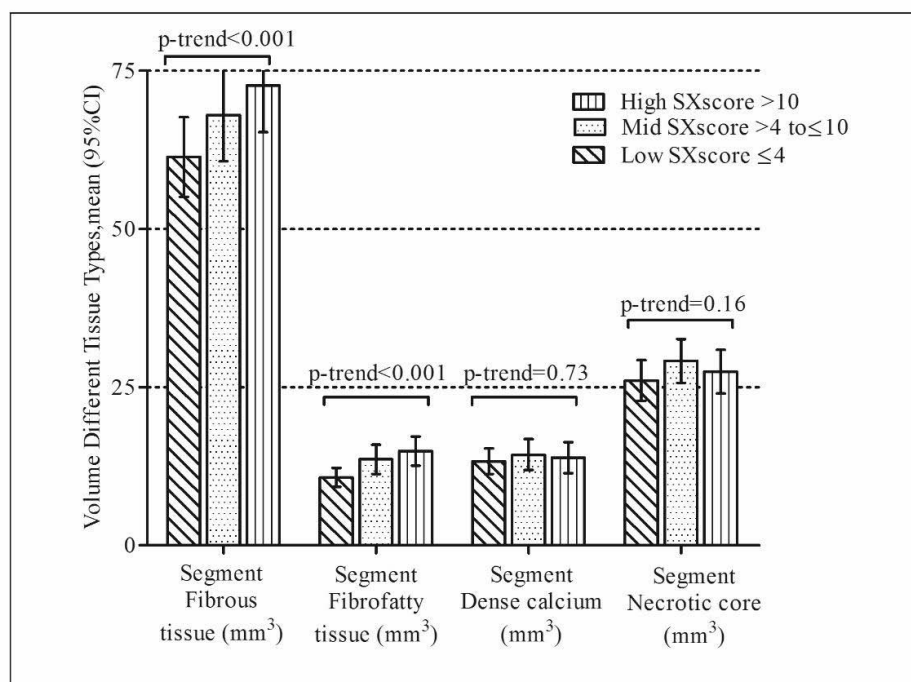


Figure 2. Distribution of RF-IVUS derived plaque components across the SXscore categorized in tertiles

The mean volumes of the different plaque components: fibrous, fibro-fatty, dense calcium and necrotic tissue are divided across the SXscore categorized in tertiles (cut-off points 4 and 10).

RF-IVUS: radiofrequency intravascular ultrasound, SXscore: SYNTAX score

Near-infrared spectroscopy in relation to SXscore

A higher SXscore was associated with a higher NIRS-derived lipid core burden index (LCBI) in the full study segment (1.35 units per SXscore point, 95%CI 0.22-2.47, p-value 0.019) (Tables 2, Figure 3). Consistent results were observed for the 10- and 4-mm segments with highest LCBI values. Again, it is relevant to note that the observed correlation between SXscore and LCBI signals was independent of segment plaque burden.

DISCUSSION

This is the first study, to our knowledge, that systematically examined a large patient population for the correlation of coronary atherosclerotic burden as determined by the SXscore and the extent and characteristics of coronary atherosclerosis as

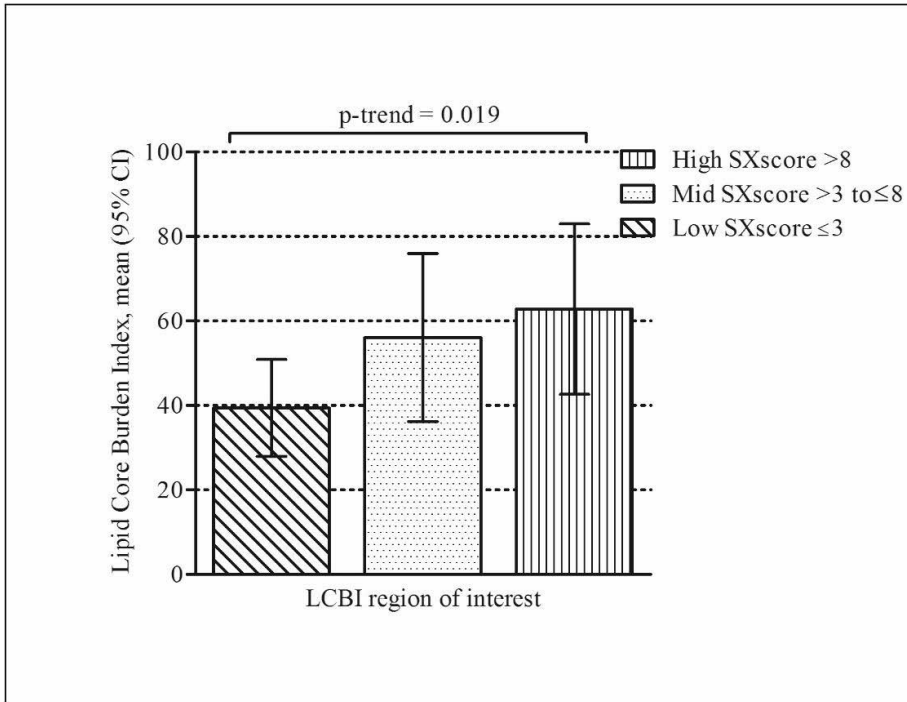


Figure 3. Distribution of NIRS-derived LCBI across the SXscore categorized in tertiles. The mean LCBI of the region of interest is divided across the SXscore categorized in tertiles (cut-off points 3 and 8).
LCBI: lipid core burden index, SXscore: SYNTAX score

assessed by RF-IVUS and NIRS in one non-stenotic segment of a single non-culprit coronary artery. This study shows that there is a significant and independent association between these entities in patients with CAD.

The SXscore is a well-established angiographic tool for the assessment of the severity and complexity of CAD. (2) It not only evaluates the number of significant stenoses but also lesion length and amount of calcification, amongst others. Still, as the SXscore is based on coronary luminography, it is limited in the assessment of the extent of (non-stenotic) plaque burden and plaque morphology, including the identification of high-risk plaque characteristics and vulnerable plaques. We demonstrated that the SXscore is associated with RF-IVUS and NIRS derived information on the extent and composition of coronary atherosclerosis in patients with CAD. The correlation between SXscore and the amount of fatty/fibro-fatty tissue as well as LCBI were most striking. In this respect it is relevant to note the absence of

relations between SXscore and plaque phenotype (necrotic core volume) and lesion morphology (TCFA).

Previously, a significant relation between atherosclerotic burden in one non-culprit coronary segment as assessed by RF-IVUS or NIRS and cardiovascular outcome was demonstrated which persisted after exclusion of culprit-related and imaged segment-related cardiac events.(5,7) This indirectly supported the assumption that the atherosclerotic burden in one non-culprit coronary segment may be representative for the atherosclerotic disease of the entire coronary tree. The current study shows a direct association between angiographic atheroma burden of all three vessels and intravascular coronary wall evaluation of a non-culprit segment.

Although pre-specified high-risk plaque phenotypes (TCFA, $MLA \leq 4.0 \text{ mm}^2$ and lesions with a plaque burden of $\geq 70\%$) were not significantly associated with an increase in SXscore, the volume of fibrous and fibro-fatty tissue in plaques was higher in patients with a higher SXscore. Although a previous study has shown that plaque morphology, as measured by three-vessel imaging by optical coherence tomography (OCT) or IVUS, is associated with and may be used for the identification of vulnerable plaques in patients with ACS,(19) it appears from our study that it is the amount of tissue type which is associated with SXscore and not plaque morphology (the layout of the tissue) per se. In light of the relatively overall low angiographic burden of disease in our population, however, it needs to be considered that this finding may not be applicable in a patient population with more advanced CAD. Moreover, necrotic core and dense calcium did not show a significant association with a higher SXscore.

Previously, in one other small cohort, the relationship between NIRS and SXscore was explored but no association was found.(17) The relationship between NIRS and the SXscore has also been studied in a subset of patients from ATHEROREMO-IVUS.(18) The enrichment of the ATHEROREMO-IVUS cohort with the IBIS-3 cohort in the current study substantially increases the sample size and creates more robust data.

In most studies, SXscore is stratified in tertiles or even quartiles reflecting the distribution of the scores found in the respective cohort.(2) The thresholds of the original SYNTAX trial (cut-off points:22 and 33) have been incorporated in the guidelines for the decision-making regarding CABG and PCI, but these thresholds apply to patients with left main and/or three-vessel disease.(19) Our population also consisted of patients with single or two vessel disease and hence, understandably, our mean SXscore and cut-off values for the tertiles were relatively low. It warrants further research to assess which absolute SXscore thresholds are applicable in a

heterogeneous population for risk prediction of adverse outcome in patients with CAD.

Furthermore, we argue that combined IVUS-NIRS intracoronary imaging holds promise for more precise detection and quantification of atherosclerotic burden in patients with CAD, and in the future may even be of interest for the prediction of adverse events. However, further research is warranted to assess the application of combined IVUS-NIRS intracoronary imaging for the prediction of adverse events.

Limitations

This cohort, composed of two prospective studies, has broad inclusion criteria which enable the results to be applicable in a broad patient population with CAD. Data collection, processing and analyses were conducted by researchers independent and blinded for patient and outcome data. However, a few limitations deserve consideration.

As indicated, our study includes patients with relatively low SXscores. This might induce an underestimation of the studied associations and insufficient power to reveal additional associations. However, a subgroup analysis with exclusion of patients without significant CAD, showed results that were essentially similar. Moreover, the lowest tertile in this cohort contains significantly more patient with a previous PCI, which may indicate an underestimation of the severity of CAD caused by a low SXscore derived at study entry.

Furthermore, while the SXscore analyst was blinded for all patient information, occlusions in STEMI patients were scored as occlusions of unknown duration. In the MI SYNTAX score study, it was suggested to calculate occlusions in STEMI patients post-wiring. (20) However, the MI SYNTAX score did not show better performance than the original SXscore calculated in STEMI patients.

Lastly, although literature demonstrated that experienced operators produce reasonable SXscores, the modest reproducibility of the SXscore in general has to be acknowledged. (21) However, because of the overall relatively low angiographic burden of disease in our study population, we expected a fair reproducibility of the SXscore in our study. To address the reproducibility of our SXscores, a second experienced operator, blinded for patient characteristics and previously scored SXscores, repeated SXscore analysis in a representative random sample. Cohen's kappa showed to be 0.91, indicating a good interobserver agreement.

Conclusions

In patients with CAD, there is a clear and significant correlation between a higher SXscore and a higher atherosclerotic burden as assessed by RF-IVUS and NIRS in one non-stenotic segment in a single non-culprit coronary artery.

REFERENCES

1. Sianos G, Morel MA, Kappetein AP, Morice MC, Colombo A, Dawkins K, van den Brand M, Van Dyck N, Russell ME, Mohr FW, Serruys PW. The SYNTAX Score: an angiographic tool grading the complexity of coronary artery disease. *EuroIntervention*. 2005; 1:219-27.
2. Mohr FW, Morice MC, Kappetein AP, Feldman TE, Stahle E, Colombo A, Mack MJ, Holmes DR Jr, Morel MA, Van Dyck N, Houle VM, Dawkins KD, Serruys PW. Coronary artery bypass graft surgery versus percutaneous coronary intervention in patients with three-vessel disease and left main coronary disease: 5-year follow-up of the randomised, clinical SYNTAX trial. *Lancet*. 2013;381:629-38.
3. Garcia-Garcia HM, Mintz GS, Lerman A, Vince DG, Margolis MP, van Es GA, Morel MA, Nair A, Virmani R, Burke AP, Stone GW, Serruys PW. Tissue characterisation using intravascular radiofrequency data analysis: recommendations for acquisition, analysis, interpretation and reporting. *EuroIntervention*. 2009;5: 177-89.
4. Waxman S, Dixon SR, L'Allier P, Moses JW, Petersen JL, Cutlip D, Tardif JC, Nesto RW, Muller JE, Hendricks MJ, Sum ST, Gardner CM, Goldstein JA, Stone GW, Krucoff MW. In vivo validation of a catheter-based near-infrared spectroscopy system for detection of lipid core coronary plaques: initial results of the SPECTACL study. *JACC Cardiovasc Imaging*. 2009;2:858-68.
5. Oemrawsingh RM, Cheng JM, Garcia-Garcia HM, van Geuns RJ, de Boer SP, Simsek C, Kardys I, Lenzen MJ, van Domburg RT, Regar E, Serruys PW, Akkerhuis KM, Boersma E; ATHEROREMO-NIRS Investigators. Near-infrared spectroscopy predicts cardiovascular outcome in patients with coronary artery disease. *J Am Coll Cardiol*. 2014;64:2510-8.
6. Nicholls SJ, Hsu A, Wolski K, Hu B, Bayturan O, Lavoie A, Uno K, Tuzcu EM, Nissen SE. Intravascular ultrasound-derived measures of coronary atherosclerotic plaque burden and clinical outcome. *J Am Coll Cardiol*. 2010;55:2399-407.
7. Cheng JM, Garcia-Garcia HM, de Boer SP, Kardys I, Heo JH, Akkerhuis KM, Oemrawsingh RM, van Domburg RT, Ligthart J, Witberg KT, Regar E, Serruys PW, van Geuns RJ, Boersma E. In vivo detection of high-risk coronary plaques by radiofrequency intravascular ultrasound and cardiovascular outcome: results of the ATHEROREMO-IVUS study. *Eur Heart J*. 2014;35:639-47.
8. Schuurman AS, Vroegindewey M, Kardys I, Oemrawsingh RM, Cheng JM, de Boer S, Garcia-Garcia HM, van Geuns RJ, Regar ES, Daemen J, van Mieghem NM, Serruys PW, Boersma E, Akkerhuis KM. Near-infrared spectroscopy-derived lipid core burden index predicts adverse cardiovascular outcome in patients with coronary artery disease during long-term follow-up. *Eur Heart J*. 2018;39:295-302.
9. Oemrawsingh RM, Garcia-Garcia HM, van Geuns RJ, Lenzen MJ, Simsek C, de Boer SP, Van Mieghem NM, Regar E, de Jaegere PP, Akkerhuis KM, Ligthart JM, Zijlstra F, Serruys PW, Boersma E. Integrated Biomarker and Imaging Study 3 (IBIS-3) to assess the ability of rosuvastatin to decrease necrotic core in coronary arteries. *EuroIntervention*. 2016;12:734-9.
10. Simsek C, Garcia-Garcia HM, van Geuns RJ, Magro M, Girasis C, van Mieghem N, Lenzen M, de Boer S, Regar E, van der Giessen W, Raichlen J, Duckers HJ, Zijlstra F, van der Steen T, Boersma E, Serruys PW; Integrated Biomarker and Imaging Study-3 investigators. The ability of high dose rosuvastatin to improve plaque composition in

- non-intervened coronary arteries: rationale and design of the Integrated Biomarker and Imaging Study-3 (IBIS-3). *EuroIntervention*. 2012;8:235-41.
11. de Boer SP, Cheng JM, Garcia-Garcia HM, Oemrawsingh RM, van Geuns RJ, Regar E, Zijlstra F, Laaksonen R, Halperin E, Kleber ME, Koenig W, Boersma E, Serruys PW. Relation of genetic profile and novel circulating biomarkers with coronary plaque phenotype as determined by intravascular ultrasound: rationale and design of the ATHEROREMO-IVUS study. *EuroIntervention*. 2014;10:953-60.
 12. Wykrzykowska JJ, Garg S, Girasis C, de Vries T, Morel MA, van Es GA, Buszman P, Linke A, Ischinger T, Klauss V, Corti R, Eberli F, Wijns W, Morice MC, di Mario C, van Geuns RJ, Juni P, Windecker S, Serruys PW. Value of the SYNTAX score for risk assessment in the all-comers population of the randomized multi-center LEADERS (Limus Eluted from A Durable versus ERodable Stent coating) trial. *J Am Coll Cardiol*. 2010;56:272-7.
 13. Girasis C, Garg S, Räber L, Sarno G, Morel MA, Garcia-Garcia HM, Lüscher TF, Serruys PW, Windecker S. SYNTAX score and Clinical SYNTAX score as predictors of very long-term clinical outcomes in patients undergoing percutaneous coronary interventions: a substudy of Sirolimus-eluting stent compared with paclitaxel-eluting stent for coronary revascularization (SIRTAX) trial. *Eur Heart J*. 2011;32:3115-27.
 14. Garg S, Serruys PW, Silber S, Wykrzykowska J, van Geuns RJ, Richardt G, Buszman PE, Kelbaek H, van Boven AJ, Hofma SH, Linke A, Klauss V, Wijns W, Macaya C, Garot P, DiMario C, Manoharan G, Kornowski R, Ischinger T, Bartorelli A, Van Remortel E, Ronden J, Windecker S. The prognostic utility of the SYNTAX score on 1-year outcomes after revascularization with zotarolimus- and everolimus-eluting stents: a substudy of the RESOLUTE All Comers Trial. *JACC Cardiovasc Interv*. 2011;4: 432-41.
 15. Garg S, Sarno G, Serruys PW, Rodriguez AE, Bolognese L, Anselmi M, De Cesare N, Colangelo S, Moreno R, Gambetti S, Monti M, Bristot L, Bressers M, Garcia-Garcia HM, Parrinello G, Campo G, Valgimigli M; STRATEGY and MULTISTRATEGY Investigators. Prediction of 1-year clinical outcomes using the SYNTAX score in patients with acute ST-segment elevation myocardial infarction undergoing primary percutaneous coronary intervention: a substudy of the STRATEGY (Single High-Dose Bolus Tirofiban and Sirolimus-Eluting Stent Versus Abciximab and Bare-Metal Stent in Acute Myocardial Infarction) and MULTISTRATEGY (Multicenter Evaluation of Single High-Dose Bolus Tirofiban Versus Abciximab With Sirolimus-Eluting Stent or Bare-Metal Stent in Acute Myocardial Infarction Study) trials. *JACC Cardiovasc Interv*. 2011;4:66-75.
 16. Tian J, Ren X, Vergallo R, Xing L, Yu H, Jia H, Soeda T, McNulty I, Hu S, Lee H, Yu B, Jang IK. Distinct morphological features of ruptured culprit plaque for acute coronary events compared to those with silent rupture and thin-cap fibroatheroma: a combined optical coherence tomography and intravascular ultrasound study. *J Am Coll Cardiol*. 2014;63:2209-16.
 17. Zynda TK, Thompson CD, Hoang KC, Seto AH, Glovaci D, Wong ND, Patel PM, Kern MJ. Disparity between angiographic coronary lesion complexity and lipid core plaques assessed by near-infrared spectroscopy. *Catheter Cardiovasc Interv*. 2013;81: 529-37.
 18. Brugaletta S, Magro M, Simsek C, Heo JH, de Boer S, Ligthart J, Witberg K, Farooq V, van Geuns RJ, Schultz C, van Mieghem N, Regar E, Zijlstra F, Duckers HJ, de Jaegere P, Muller JE, van der Steen AF, Boersma E, Garcia-Garcia HM, Serruys PW. Plaque compositional Syntax score: combining angiography and lipid burden in coronary artery disease. *JACC Cardiovasc Imaging*. 2012;5(3 Suppl):S119-21.

19. Authors/Task Force members, Windecker S, Kolh P, Alfonso F, Collet JP, Cremer J, Falk V, Filippatos G, Hamm C, Head SJ, Jüni P, Kappetein AP, Kastrati A, Knuuti J, Landmesser U, Laufer G, Neumann FJ, Richter DJ, Schauerte P, Sousa Uva M, Stefanini GG, Taggart DP, Torracca L, Valgimigli M, Wijns W, Witkowski A. 2014 ESC/EACTS Guide-lines on myocardial revascularization: The Task Force on Myo-cardial Revascu-larization of the European Society of Cardiology (ESC) and the European Association for Cardio-Thoracic Sur-gery (EACTS)Developed with the special contribution of the European Association of Percutaneous Cardiovascular Interven-tions (EAPCI). *Eur Heart J*. 2014;35: 2541-619.
20. Magro M, Nauta S, Simsek C, Onuma Y, Garg S, van der Heide E, van der Giessen WJ, Boersma E, van Domburg RT, van Geuns RJ, Serruys PW. Value of the SYNTAX score in patients treated by primary percutaneous coronary intervention for acute ST-elevation myocardial infarction: The MI SYNTAXscore study. *Am Heart J*. 2011;161:771-81.
21. Garg S, Girasis C, Sarno G, Goedhart D, Morel MA, Garcia- Garcia HM, Bressers M, van Es GA, Serruys PW; SYNTAX trial investigators. The SYNTAX score revisited: a reassess-ment of the SYNTAX score reproducibility. *Catheter Cardiovasc Interv*. 2010;75:946-52.
22. Nair A, Margolis MP, Kuban BD, Vince DG. Automated coronary plaque characterisa-tion with intravascular ultrasound backscatter: ex vivo validation. *EuroIntervention*. 2007;3: 113-20.
23. Rodriguez-Granillo GA, Garcia-Garcia HM, Mc Fadden EP, Valgimigli M, Aoki J, de Feyter P, Serruys PW. In vivo intravascu-lar ultrasound-derived thin-cap fibroath-eroma detection using ultra-sound radiofrequency data analysis. *J Am Coll Cardiol*. 2005;46: 2038-42.
24. Erlinge D. Near-infrared spectroscopy for intracoronary detection of lipid-rich plaques to understand atherosclerotic plaque biology in man and guide clinical therapy. *J Intern Med*. 2015; 278:110-25.

SUPPLEMENTARY APPENDIX

METHODS

Coronary intravascular ultrasound

Following CAG, IVUS was performed in a proximal non-stenotic (<50% stenosis) segment of at least 40 mm of a non-culprit artery. The order of preference used for selection of the non-culprit vessel was predefined in the study protocol: 1) left anterior descending artery; 2) right coronary artery; 3) left circumflex artery. All IVUS data were obtained with the Volcano s5/s5i Imaging System (Volcano Corp., San Diego, CA, USA) using a Volcano Eagle Eye Gold IVUS catheter (20 Mhz). An automatic pullback system was used with a standard pullback speed of 0.5 mm per second. The baseline IVUS images were sent to an independent core laboratory (Cardialysis, Rotterdam, the Netherlands) for offline analysis. The core laboratory personnel were blinded for baseline patient characteristics and clinical outcome. The RF-IVUS analysis was performed using pcVH 2.1 and qVH (Volcano Corp., San Diego, CA, USA) software.

The external elastic membrane and luminal borders were contoured for each frame (median interslice distance, 0.40 mm). Plaque burden was defined as the plaque and media cross-sectional area divided by the external elastic membrane cross-sectional area. A coronary lesion was defined as a segment with a plaque burden of more than 40% in at least 3 consecutive frames. The composition of atherosclerotic plaque was characterized into 4 different tissue types: fibrous, fibro-fatty, dense calcium and necrotic core [22]. Three types of high-risk lesions were identified: 1) thin-cap fibroatheroma (TCFA) lesion, defined as a lesion with presence of >10% confluent necrotic core in direct contact with the lumen; 2) lesion with large plaque burden, defined as a lesion with a plaque burden of $\geq 70\%$; 3) stenotic lesion, defined as a lesion with a minimal luminal area (MLA) of $\leq 4.0 \text{ mm}^2$. (4,23)

Methods near-infrared spectroscopy

In a subset of patients, NIRS imaging was performed in the same segment as IVUS. The NIRS system used consists of a 3.2 Fr rapid exchange catheter, a pullback and rotation device and a console (Infraredx, Burlington, MA, USA), approved by the U.S. Food and Drug Administration. Image acquisition was performed by a motorized catheter pullback at a speed of 0.5 mm/s and 240 rpm. The system performed 1,000 chemical measurements per 12.5 mm. Each measurement interrogated 1 to

2 mm² of vessel wall from, approximately, 1 mm in depth from the luminal surface towards the adventitia.(4,5)

The NIRS measurements were used to create a chemogram. The fraction of yellow pixels from the chemogram was multiplied by 1,000, to calculate the lipid core burden index (LCBI). Thus, the LCBI value, with a range between 0 and 1,000, represents the amount of lipid core in the assessed segment. (24) In addition, within this region of interest, the 10 mm and 4 mm segment with the highest LCBI was defined. NIRS images were analyzed offline by an independent core laboratory (Cardialysis, Rotterdam, the Netherlands). Core laboratory personnel were blinded to all other patient and outcome data.