

EUR Research Information Portal

Laparoscopic versus Open Peritoneal Dialysis Catheter Insertion: A Meta-Analysis

Published in:
PLoS One (print)

Publication status and date:
Published: 01/01/2013

DOI (link to publisher):
[10.1371/journal.pone.0056351](https://doi.org/10.1371/journal.pone.0056351)

Document Version
Publisher's PDF, also known as Version of record

Citation for the published version (APA):

Hagen, M., Lafranca, J., Steyerberg, E., IJzermans, J. N. M., & Dor, F. (2013). Laparoscopic versus Open Peritoneal Dialysis Catheter Insertion: A Meta-Analysis. *PLoS One (print)*, 8(2). <https://doi.org/10.1371/journal.pone.0056351>

[Link to publication on the EUR Research Information Portal](#)

Terms and Conditions of Use

Except as permitted by the applicable copyright law, you may not reproduce or make this material available to any third party without the prior written permission from the copyright holder(s). Copyright law allows the following uses of this material without prior permission:

- you may download, save and print a copy of this material for your personal use only;
- you may share the EUR portal link to this material.

In case the material is published with an open access license (e.g. a Creative Commons (CC) license), other uses may be allowed. Please check the terms and conditions of the specific license.

Take-down policy

If you believe that this material infringes your copyright and/or any other intellectual property rights, you may request its removal by contacting us at the following email address: openaccess.library@eur.nl. Please provide us with all the relevant information, including the reasons why you believe any of your rights have been infringed. In case of a legitimate complaint, we will make the material inaccessible and/or remove it from the website.

Laparoscopic versus Open Peritoneal Dialysis Catheter Insertion: A Meta-Analysis

Sander M. Hagen¹, Jeffrey A. Lafranca¹, Ewout W. Steyerberg², Jan N. M. IJzermans¹, Frank J. M. F. Dor^{1*}

1 Department of Surgery, Erasmus MC, University Medical Center, Rotterdam, The Netherlands, **2** Department of Public Health, Erasmus MC, University Medical Center, Rotterdam, The Netherlands

Abstract

Background: Peritoneal dialysis is an effective treatment for end-stage renal disease. Key to successful peritoneal dialysis is a well-functioning catheter. The different insertion techniques may be of great importance. Mostly, the standard operative approach is the open technique; however, laparoscopic insertion is increasingly popular. Catheter malfunction is reported up to 35% for the open technique and up to 13% for the laparoscopic technique. However, evidence is lacking to definitely conclude that the laparoscopic approach is to be preferred. This review and meta-analysis was carried out to investigate if one of the techniques is superior to the other.

Methods: Comprehensive searches were conducted in MEDLINE, Embase and CENTRAL (the Cochrane Library 2012, issue 10). Reference lists were searched manually. The methodology was in accordance with the Cochrane Handbook for interventional systematic reviews, and written based on the PRISMA-statement.

Results: Three randomized controlled trials and eight cohort studies were identified. Nine postoperative outcome measures were meta-analyzed; of these, seven were not different between operation techniques. Based on the meta-analysis, the proportion of migrating catheters was lower (odds ratio (OR) 0.21, confidence interval (CI) 0.07 to 0.63; $P=0.006$), and the one-year catheter survival was higher in the laparoscopic group (OR 3.93, CI 1.80 to 8.57; $P=0.0006$).

Conclusions: Based on these results there is some evidence in favour of the laparoscopic insertion technique for having a higher one-year catheter survival and less migration, which would be clinically relevant.

Citation: Hagen SM, Lafranca JA, Steyerberg EW, IJzermans JNM, Dor FJMF (2013) Laparoscopic versus Open Peritoneal Dialysis Catheter Insertion: A Meta-Analysis. PLoS ONE 8(2): e56351. doi:10.1371/journal.pone.0056351

Editor: Mercedes Susan Mandell, University of Colorado, United States of America

Received: October 5, 2012; **Accepted:** January 8, 2013; **Published:** February 15, 2013

Copyright: © 2013 Hagen et al. This is an open-access article distributed under the terms of the Creative Commons Attribution License, which permits unrestricted use, distribution, and reproduction in any medium, provided the original author and source are credited.

Funding: The authors have no support or funding to report.

Competing Interests: The authors declare no competing interests.

* E-mail: f.dor@erasmusmc.nl

Introduction

Peritoneal dialysis (PD) is an effective treatment for end-stage renal disease (ESRD) [1–4]. The most important benefit of PD relative to haemodialysis is the preservation of residual renal function, which equates to improved survival during the first several years of therapy [5]. The key to successful PD is the presence of a well-functioning dialysis catheter, defined as one that facilitates free dialysis solution in- and outflow. However, several complications, such as in- and outflow obstruction, peritonitis, exit-site infections, leakage and migration, can lead to catheter removal and loss of peritoneal access [6]. Currently, different surgical techniques are in practice for PD catheter placement [6–10]. The insertion technique may have a great influence on the occurrence of complications. The literature describes a 10–35% catheter failure rate when using the open technique [11–14] and 2.8–13% catheter failures for the laparoscopic insertion technique [15–18].

The open technique is still the most frequently used technique. However, laparoscopic procedures have proven to be superior to a number of open surgical procedures, by reducing morbidity, length of hospital stay, postoperative pain and lead to a quicker convalescence [19–22]. In case of PD catheter insertion, the

laparoscopic approach enables the surgeon to insert the PD catheter under direct vision and thus at the end of the operation the correct catheter position is assured, which may lead to a better and prolonged catheter function.

In the existing literature, there is no consensus about the preferred operative technique for PD catheter insertion. Our aim is to investigate whether there is a preferable method or not, when data from the literature are reviewed and analyzed systematically. In 2004, Strippoli et al. [23] performed a review of the literature up to April 2004, summarizing data comparing laparoscopic, peritoneoscopic and open insertion of PD catheters. This study only included randomized controlled trials and the primary outcome was the prevention of peritonitis. Furthermore, in 2012, Xie et al. [24] performed a review and meta-analysis of the literature. However, this study also included trials using other techniques and studying other populations. Our systematic review includes randomized controlled trials as well as cohort studies up to October 2012, describing multiple outcomes of studies comparing the laparoscopic and open technique in adults.

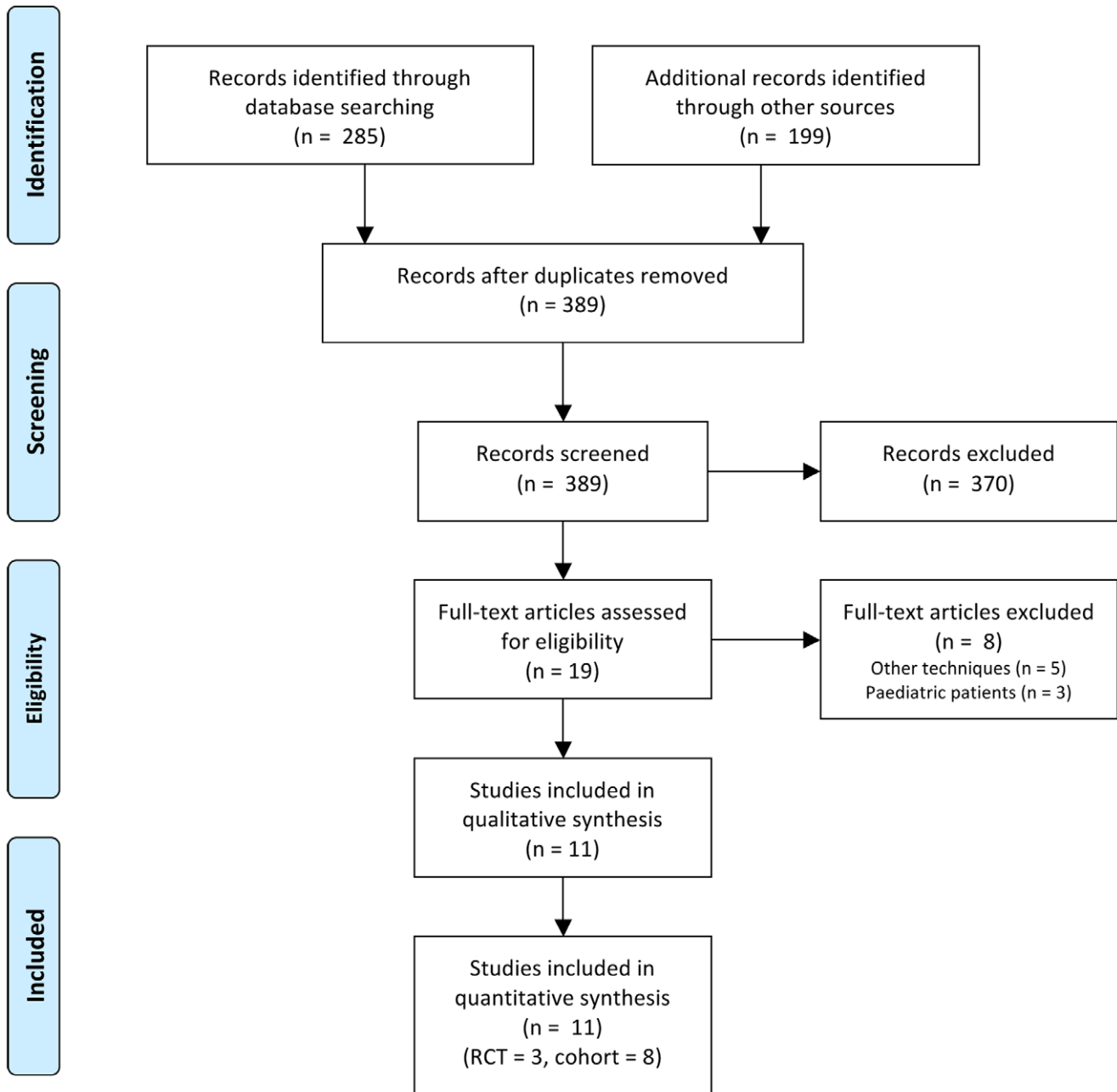


Figure 1. PRISMA flow diagram of the systematic literature search.
doi:10.1371/journal.pone.0056351.g001

Methods

All aspects of the Cochrane Handbook for Interventional Systematic Reviews were followed and the study was written according to the Preferred Reporting Items for Systematic Reviews and Meta-Analyses (PRISMA) statement [25]. A review protocol was drafted before the initial search was started.

Literature Search Strategy

Comprehensive searches were carried out in MEDLINE, Embase and CENTRAL (the Cochrane Library 2012, issue 10). The search was performed for articles published up to October 2012 relevant to outcome of laparoscopic or open insertion of a PD catheter. There was no publication year or publication language

restriction applied. The search-string used in PubMed was (“Peritoneal Dialysis”[Majr] AND (Laparoscopy OR laparotomy OR open)) AND (“catheters”[Majr] OR catheter). Other databases were searched with comparable terms, suitable for the specific database. Reference lists of the identified relevant studies were scrutinized for additional citations.

Literature Screening

Studies were evaluated for inclusion by two independent researchers (SMH, JAL) for relevance to the subject. A random check was performed by a supervisor (FJMFD). Study selection was accomplished through three phases of study screening. In phase 1, the following types of studies were excluded: reviews,

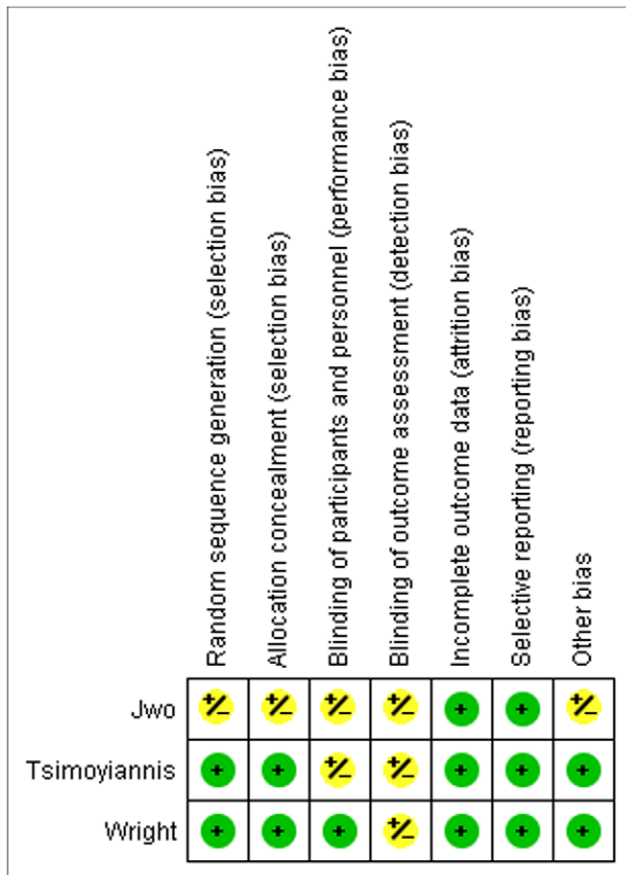


Figure 2. Risk of bias summary graph of the included studies. The green symbol indicates that there is possibly a low level of bias, red symbolizes a possible high level of bias and a yellow symbol is presented if the risk of bias is unclear. doi:10.1371/journal.pone.0056351.g002

case-reports, letters, editorials, case-series, and papers studying non-human, infants and/or adolescents. In phase 2, abstracts were reviewed for relevance and the full-text articles were obtained. In phase 3, full-text articles were reviewed; inclusion required studies describing laparoscopic and open insertion of the PD catheter. The studies had to describe one or more of the following outcome measures to be included: incidence of peritonitis, exit-site/tunnel infection, pericanular leakage, catheter migration, catheter removal for complications, need for revision and catheter survival. Any discrepancies in in- or exclusion were resolved by discussion between the reviewers with supervision of a third person.

Data Extraction and Critical Appraisal

The level of evidence of each paper was established following the Oxford Centre for Evidence-Based Medicine Level of Evidence scale [26,27] and by using the GRADE tool [28]. The quality and the potential of bias of the randomized controlled trials were assessed according to the Cochrane Collaboration’s tool for assessing risk of bias by Higgins [29].

Statistical Analysis

Odds ratios (OR) and their 95% confidence interval (CI) were calculated from raw data using patients with an open catheter insertion as the control group. A meta-analysis was performed with complications and catheter survival as outcome measures using

Review Manager Software (RevMan, 5.1; The Nordic Cochrane Centre, Copenhagen, Denmark). Each study was weighted by sample size. Heterogeneity of treatment effects between studies was tested using the Q (heterogeneity χ^2) and the I² statistics. A random-effects model was used for calculating the summary estimates and 95% CI, to account for possible clinical heterogeneity. Overall effects were determined using the Z-test. In addition, the individual study effect on the results was examined by removing each study at a time to examine whether removing a particular study would significantly change the results.

Results

Of the 285 papers found after the initial search, eleven fell within the scope of the study; three randomized controlled trials [14,30,31] and eight cohort studies [32–39]. These eleven studies were represented by twelve individual references. One publication (by Crabtree et al. 2005) was excluded for describing patients that were already described in another paper in 2000 by the same group [40]. No additional studies were included after manually scrutinizing reference lists. The PRISMA [25] flow diagram for systematic reviews is presented in figure 1. The assessment of the quality of the included studies is presented in figure 2. A meta-analysis was performed using a total of eleven studies; the characteristics of these studies are presented in table 1. Definitions of the analyzed outcome measures are presented in table 2.

Infections (Peritonitis, Exit-site/Tunnel Infection)

Nine studies [14,30–32,34–36,38,39] that investigated the incidence of peritonitis after PD catheter insertion were included for meta-analysis, with a total of 541 patients. There was no statistically significant difference in the risk of developing peritonitis between treatment groups (OR 0.83, 95% CI 0.48 to 1.42; P = 0.49).

With a total of 474 patients from seven studies [14,31,32,34–36,39], the pooled incidence of exit-site/tunnel infection was calculated in the meta-analysis. There was no statistically significant difference in the risk of developing an exit-site/tunnel infection between laparoscopic or open PD catheter insertion (OR 0.80, 95% CI 0.47 to 1.37; P = 0.41). (figure 3).

Catheter-related Outcome (Migration, Leakage and Obstruction)

The incidence of PD catheter migration was described in five studies [14,30,34,38,39], with a total of 319 patients, and were used to perform a meta-analysis. Migration occurred statistically significant less frequent in the laparoscopic group (OR 0.21, 95% CI 0.07 to 0.63; P = 0.006). With nine studies [14,30–35,37–39], with a total of 826 patients, the pooled incidence of leakage was calculated. There is no statistically significant difference between the two treatment groups (OR 0.88, 95% CI 0.40 to 1.92; p = 0.74). The incidence of obstructed/dysfunctioning catheters was reported for 665 patients in six studies [31–36] and was used for meta-analysis. There was a borderline statistically significant difference in favour of the laparoscopic group in this respect between the two treatment methods (OR 0.39, 95% CI 0.14 to 1.07; P = 0.07) (figure 4).

Interventional Outcome (Surgical Intervention/Catheter Revision and Removal)

The need for a surgical intervention or catheter revision was described in four studies [32,35,37,38], with a total of 165 patients. After meta-analysis, the need for an intervention showed no difference between groups (OR 0.32, CI 0.08 to 1.26; P = 0.10)

Table 1. Characteristics of studies comparing laparoscopic and open PD catheter insertion.

Reference	Year	Country	Study type	Groups	N	Evidence
Li [39]	2011	Taiwan	Prospective cohort	Laparoscopic	50	2b
				Open	23	
Jwo [14]	2010	Taiwan	RCT	Laparoscopic	37	2b
				Open	40	
Gajjar [32]	2007	USA	Retrospective cohort	Laparoscopic	45	2b
				Open	30	
Lund [38]	2007	Denmark	Retrospective cohort	Laparoscopic	9	2b
				Open	13	
Crabtree [33]	2005	USA	Prospective cohort	Laparoscopic	278	2b
				Open	63	
Soontrapornchai [34]	2005	Thailand	Prospective cohort	Laparoscopic	50	2b
				Open	52	
Ögünç [35]	2003	Turkey	Prospective cohort	Laparoscopic	21	2b
				Open	21	
Batey [37]	2002	USA	Retrospective cohort	Laparoscopic	14	2b
				Open	12	
Tsimoyiannis [30]	2000	Greece	RCT	Laparoscopic	25	2b
				Open	25	
Wright [31]	1999	UK	RCT	Laparoscopic	24	1b
				Open	21	
Draganic [36]	1998	Australia	Retrospective cohort	Laparoscopic	30	2b
				Open	30	

RCT: Randomized controlled trial, n.a.: not applicable.
doi:10.1371/journal.pone.0056351.t001

The removal of PD catheters as mentioned above was investigated in seven studies [14,30,31,35–38], including a total of 317 patients. The meta-analysis showed no statistically significant difference between the two groups. (OR 0.65, 95% CI 0.35 to 1.21; $P = 0.17$) (figure 5).

Overall Catheter Survival, Year 1 and 2

The probability of catheter survival at one year postoperatively was investigated in five studies [30,31,34,35,39], with a total of 307 patients. The 1-year survival of the catheters was statistically significant higher in the laparoscopic group (OR 3.93, 95% CI 1.80 to 8.57; $P = 0.0006$) The chance of catheter survival at two years postoperatively was described for 262 patients in four studies [31,34,35,39]. There was a borderline statistically significant difference in catheter survival at this time point (OR 2.17, CI 0.99 to 4.75; $P = 0.05$) (figure 6).

The quality of evidence of each study and outcome measure are presented as a summary of findings in figure 7. In this figure, the risk differences are presented, using which the numbers needed to treat (NNT) can be derived. For the statistically significant different outcome measures, the NNT are 8 (migration) and 6 (catheter survival year 1). Furthermore, as stated in the methods section, the quality of the RCTs was assessed by the Higgins-classification. No studies were excluded based on this classification. Sensitivity analysis, by removing each study separately, did not change results significantly, except for obstruction (when Ögünç [35] and/or Soontrapornchai [34] were excluded, respectively $P = 0.03$ and $P = 0.01$, cumulative $P < 0.0001$) and catheter intervention/replacement/revision (when Batey [37] was excluded,

$P = 0.004$). Additionally, sensitivity analysis was performed per type of study (RCT versus cohort) and no differences were found.

Discussion

This systematic review and meta-analysis reveals that the laparoscopic PD catheter insertion technique is to be preferred over the conventional open technique. Catheter survival at one year is higher in the laparoscopic group and the incidence of catheter migration is lower in this group. Furthermore, laparoscopic insertion of the PD-catheters assumingly would result in higher patient comfort, lower hospital costs and better overall PD results.

Recently, a similar meta-analysis was published by Xie et al. [24] of which the conclusion is that laparoscopic catheter placement has no superiority to open surgery. However, the authors included two studies that assessed a different technique (peritoneoscopic and percutaneous insertion) and studies including pediatric patients. In our opinion, those studies do not comply with the inclusion criteria that should be used for a meta-analysis regarding this specific topic, being aware of possible selection bias, and therefore potentially a false conclusion is drawn by the authors. In addition, the papers of Lund and Li [38,39], are not included at all.

Large case series reported no difference in the incidence of peritonitis when using the open insertion technique (2.9–31%) [41–44] or the laparoscopic technique (2.5–31%) [15,45,46]. The pooled data in this meta-analysis also shows no significant difference in the incidence of peritonitis in agreement with these studies, but there seems to be an overall trend in favour of

Table 2. List of variables/outcome measures meta-analyzed and the definitions stated by the authors.

Reference	Peritonitis	Exit-site Infection	Migration	Catheter obstruction	Leakage	Intervention/revision	Catheter removal	Catheter survival
Li [39]	Abdominal pain, cloudy effluent with white blood cell count higher than 100/mm3 and/or polymorphonuclear neutrophils larger than 50%, and identification of microorganisms	Not described	transient or prolonged, catheter malfunction during follow up and confirmed by abdominal KUB films	-	Fluid extravasation from the catheter exit-site related to dialysate infusion	-	-	'catheter dysfunction-free'
Jwo [14]	Not described	Not described	Not described	-	exit-site leak, wound leak, or extra-abdominal dialysate outflow	-	Inadequate dialysis, peritonitis, hydrocele, hydrothorax, change to HD	catheter survival excluding patients with catheter dropout due to clearly unrelated causes such as renal transplantation, renal recovery, or death from unrelated underlying diseases
Tsimoyiannis [30]	Not described	-	Not described	-	Not described	-	Peritonitis	Not described
Wright [31]	Early: <6 weeks post-op Late: >6 weeks post-op	Not described	-	Not described	Not described	-	(pseudomonas) peritonitis, ultra filtration failure, patient death	See 'removal'
Gajjar [32]	Not described	Not described	-	Not described	Early: occur within 30 days of insertion, Late: occur after 30 days of insertion	Not described	-	-
Crabtree [33]	-	-	-	Not described	Not described	-	-	-
Soontrapornchai [34]	Not described	Not described	Radiological confirmation	Not described	Not described	-	-	calculated from the day of insertion to the day of revision or removal
Ögüncü [35]	Early: <4 weeks post-op Late: >4 weeks post-op	Positive microbiological of an organism from peritoneal fluid on either Gram staining or culture	-	Due to omental wrapping and/or fibrin clotting	Not described	Pericatheter leak, chronic tunnel infection, chronic exit-site infection	Relapse or resistant peritonitis, Successful transplantation, Persistent dialysate leak, exit-site infection, patient's choice, treatment failure	'Catheter failure free'
Draganic [36]	positive microbiological identification of an organism from peritoneal fluid on either Gram staining or culture	any surrounding inflammation which required additional dressings or antibiotics	-	Not described	-	Exit-site infection, peritonitis	-	-
Batey [37]	-	-	-	-	Not described	Migration, Occlusion	Peritonitis, infected hematoma, oersistent scrotal swelling	-
Lund [38]	Not described	-	Not described	-	-	'Displacement'	'Displacement'	-

KUB = kidneys, ureters and bladder.
doi:10.1371/journal.pone.0056351.t002

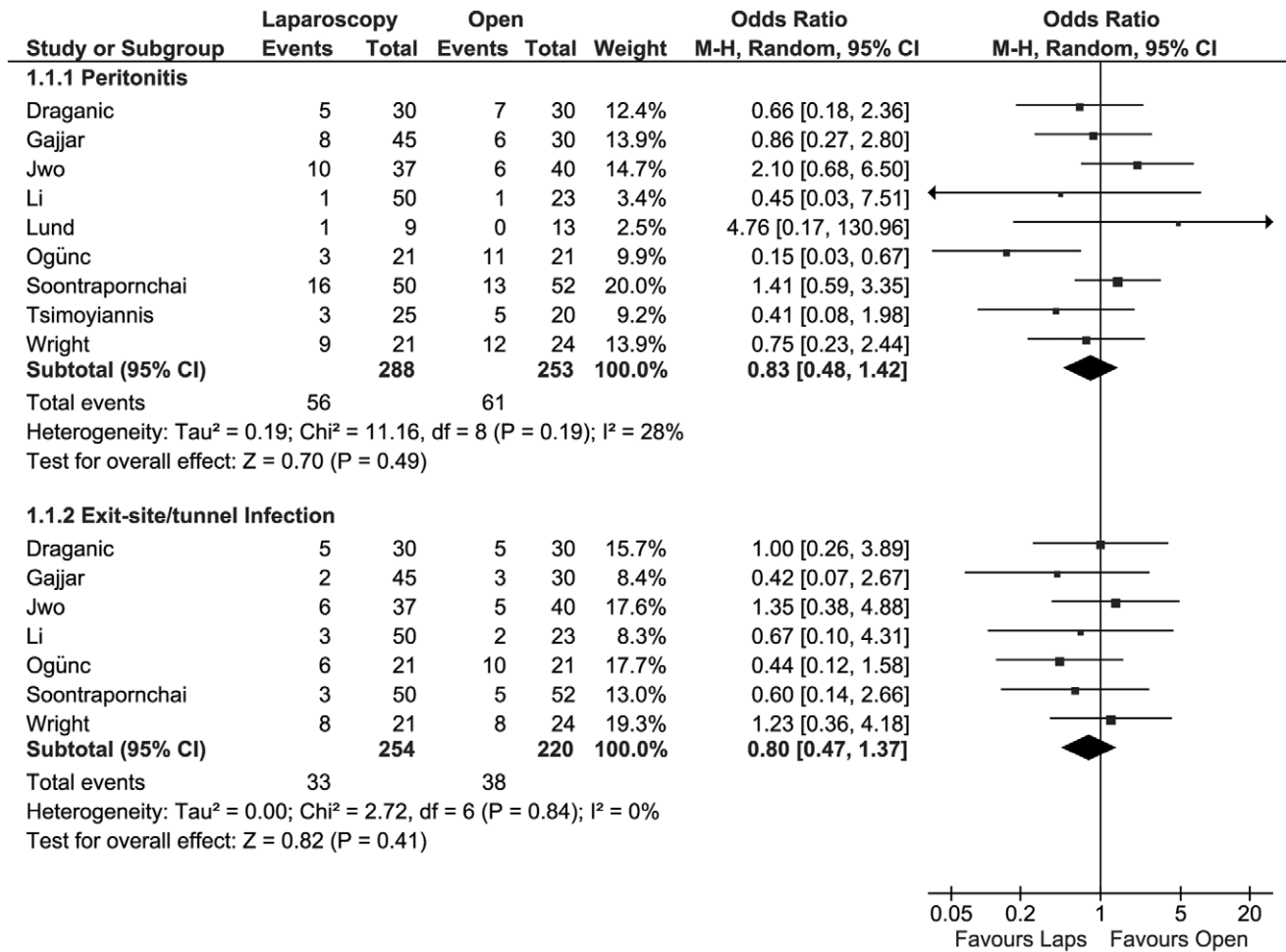


Figure 3. Forest plot. Odds ratios of the incidence of peritonitis and exit-site/tunnel infection, evaluating the statistical difference between laparoscopic and open PD catheter insertion. CI: confidence interval. doi:10.1371/journal.pone.0056351.g003

laparoscopy. The variety in peritonitis incidence in different reports may partly be due to a different antibiotic (AB) prophylaxis regimen used. There is no consensus about which AB to administer and when it should be given to prevent peritonitis. The type of AB used, may influence the incidence of peritonitis [47]. Five studies [30,34,36,38,39] in our analysis made no mention of (specific) antibiotic prophylaxis, five studies [14,32,33,35,37] reported the use of cefazolin and one study [31] the use of vancomycin. However, Gadallah [48] reported in a large RCT that the use of 1 g vancomycin preoperatively significantly reduced the risk of developing peritonitis in comparison with 1 g cefazolin and no antibiotic at all. International guidelines state that the use of vancomycin is to be preferred [49].

The incidence of exit-site/tunnel infections does not differ between the laparoscopic and open insertion technique. In all cases, the PD catheter was subcutaneously tunnelled, which is thought to reduce the incidence of exit-site infections, regardless of the insertion technique [50,51]. The literature, not analyzed in this meta-analysis, suggests a higher incidence of exit-site infections in the open group (6.3–41% [41–44]) versus the laparoscopic group (2.5–18% [15,45]). The time to start the actual PD after catheter insertion may be a possible confounder regarding this issue. Authors of some of the studies included in this analysis favour immediate PD start [30,35] where others suggest a waiting period

of 3 to 5 days [36] or two weeks [31–34]. Two studies [35,36] started PD 1 week earlier in the laparoscopic group than in the open group. Therefore, a definite conclusion is not possible to be drawn. Currently, Ranganathan [52] is performing a randomized controlled trial to determine what the most appropriate time to start PD after catheter insertion might be. The correlation between exit-site infections and peritonitis remains to be elucidated.

One might reason that the influence of the surgical insertion technique on migration is different in the early phase as compared to late phase postoperatively. A subgroup analysis on this issue was desired, but there was insufficient data to perform such an analysis.

Migration is reported in case-series in 1.3–5.4% of the laparoscopically inserted PD catheters [15,27,45] and in 7.6–17.1% when using the open technique [41,44,53]. A possible advantage of the laparoscopic insertion technique might be the ability to fixate the catheter to the ventral abdominal wall. Jwo, Li, Lund, Soontrapornchai and Tsimoyiannis [14,30,34,38,39] accurately described the incidence of migration. Li, Soontrapornchai and Tsimoyiannis used a fixation technique in the laparoscopic group; they reported no migration. The overall effectiveness of laparoscopic insertion to prevent catheter migration seems clear, but the benefit of catheter fixation is still under investigation. Ashegh et al. [15] reported 1.3% migration without fixation of the

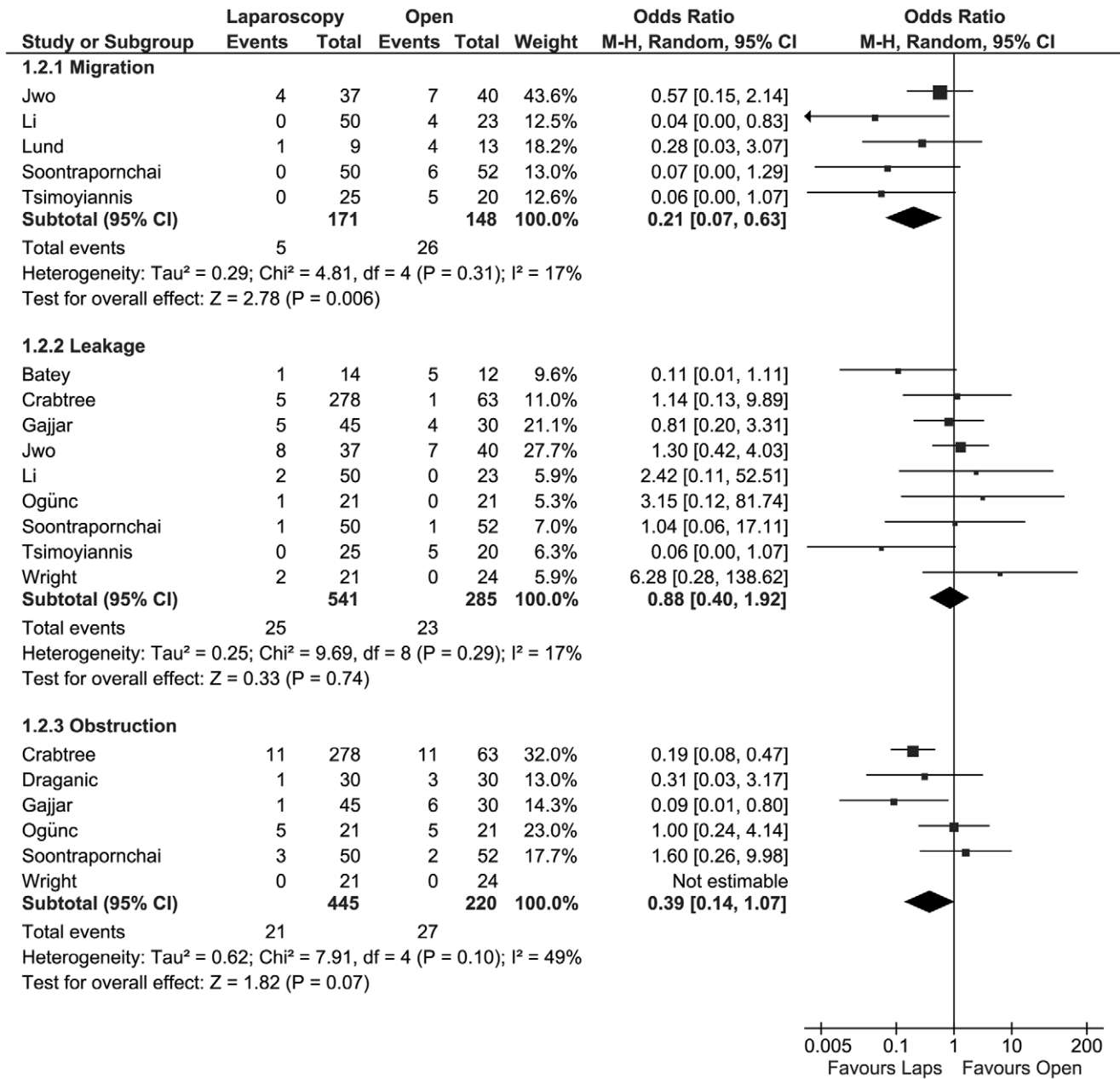


Figure 4. Forest plot. Odds ratios of the incidence of migration, leakage and obstruction, evaluating the statistical difference between laparoscopic and open PD catheter insertion. CI: confidence interval. doi:10.1371/journal.pone.0056351.g004

catheter tip and Lo et al. [27] 5.4% with fixation during laparoscopic insertion. Chen et al. [54] used a fixation technique in the open approach and reported no migration. Complication rates are reported to be comparable in case-series using fixation and no fixation [15,27,54]. Good clinical trials comparing fixation with no fixation are not available in literature. Besides the suture technique, rectus sheath tunneling might also contribute to a lower migration rate. Soontrapornchai, Ögünc and Crabtree [33–35] used this technique, but only Soontrapornchai reported the migration rate accurately and could be included for analysis.

Different types of catheters are used in the studies included in this analysis. This may bias the results of catheter obstruction/dysfunction. Also, the use of either a coiled or a straight catheter might influence the results. Swartz et al. have suggested that the

use of coiled catheters reduces the incidence of catheter dysfunction [55]. The literature, not analyzed in the meta-analysis, does not show consensus at this point. Johnson et al. [41] performed a RCT to evaluate the use of a coiled and a straight catheter and reported a significantly higher one-year survival when using a straight catheter (64% vs. 75% respectively). However, Nielsen et al. [56] also performed a RCT comparing coiled and straight catheters, and reported a significantly higher one year survival of coiled catheters (77% vs. 36% respectively). Johnson inserted the catheters using the open method, where Nielsen used a percutaneous technique. The importance of the type of catheters inserted laparoscopically remains unknown at this point. The ideal type of catheter may depend on the operative insertion technique.

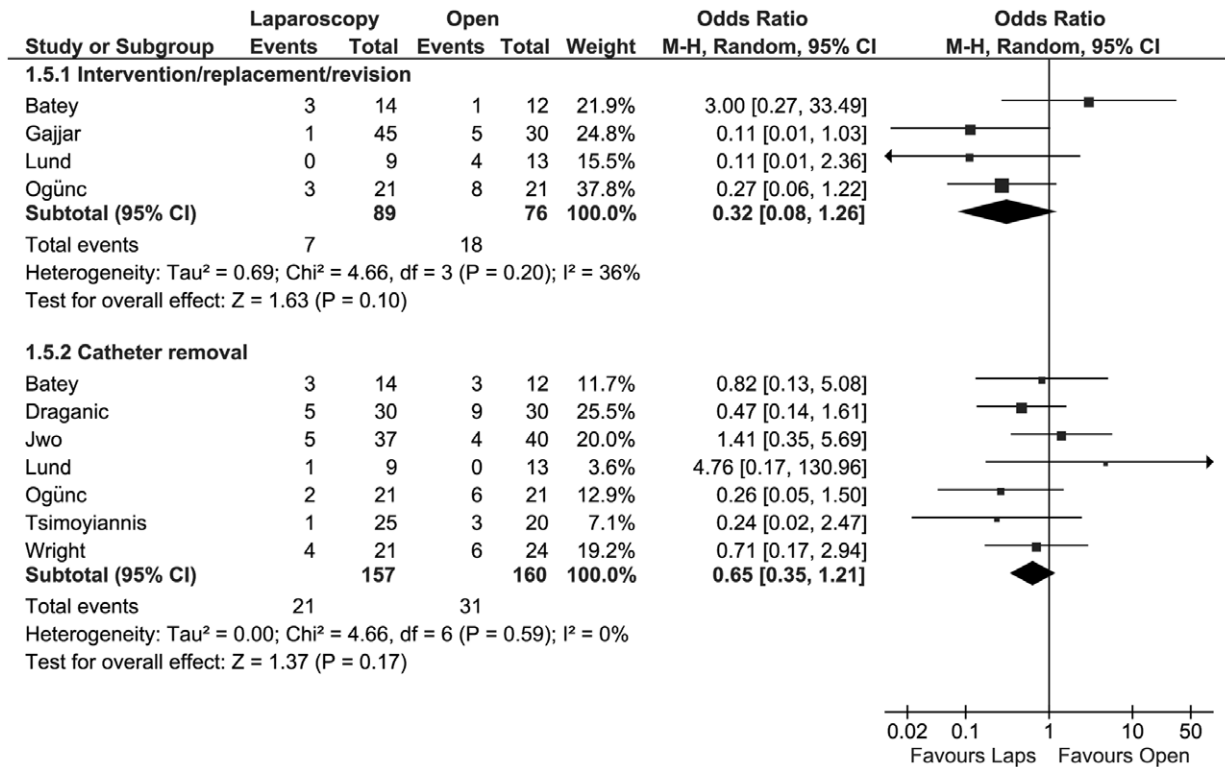


Figure 5. Forest plot. Odds ratio of the incidence of intervention/revision and catheter removal, evaluating the statistical difference between laparoscopic and open PD catheter insertion. CI: confidence interval. doi:10.1371/journal.pone.0056351.g005

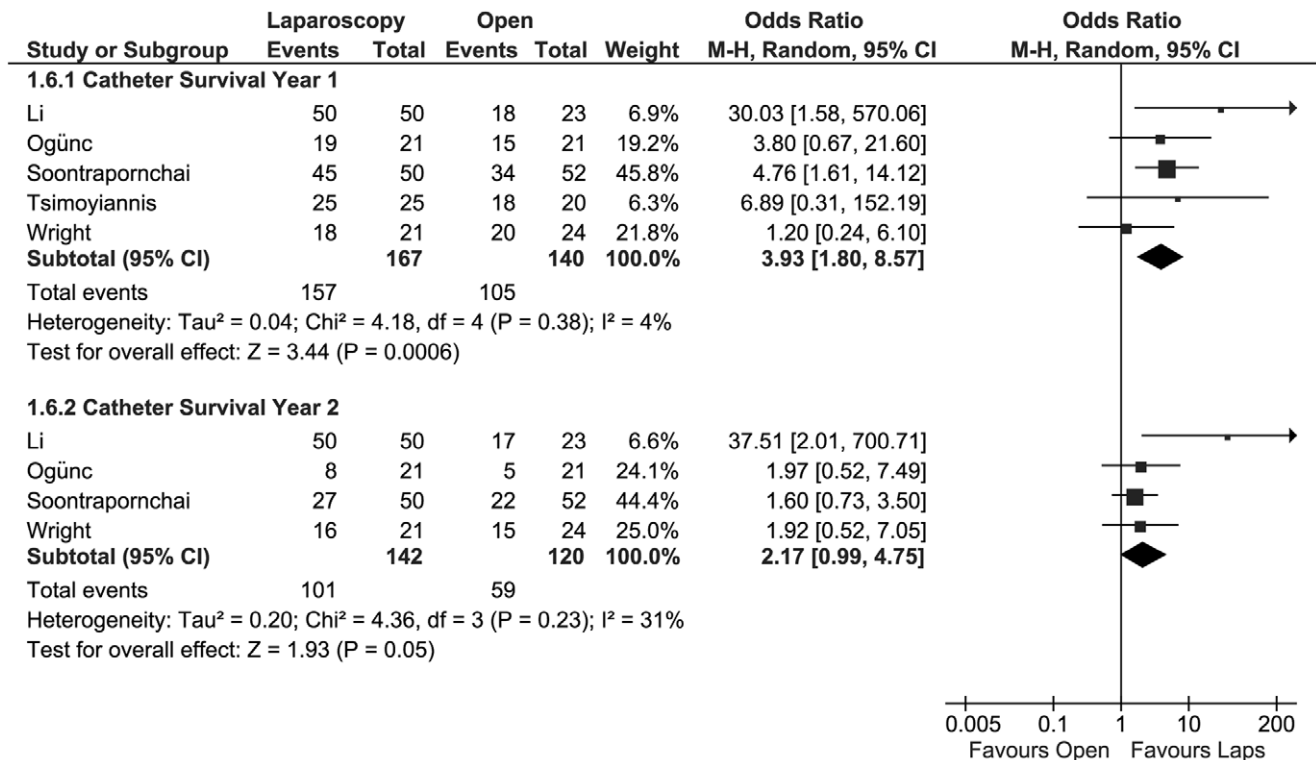


Figure 6. Forest plot. Odds ratios of the catheter survival, at one year and two years after insertion, evaluating the statistical difference between laparoscopic and open PD catheter insertion. CI: confidence interval. doi:10.1371/journal.pone.0056351.g006

Laparoscopic PD catheter insertion compared to Open PD catheter insertion for End-Stage Renal Disease					
Bibliography:					
Outcomes	No of Participants (studies) Follow up	Quality of the evidence (GRADE)	Relative effect (95% CI)	Anticipated absolute effects	
				Risk with Open PD catheter insertion	Risk difference with Laparoscopic PD catheter insertion (95% CI)
Patient-related outcome - Peritonitis	541 (9 studies) ¹ 1 - 55 months	●●●● VERY LOW ^{2,3} due to risk of bias, imprecision	OR 0.83 (0.48 to 1.42)	Study population	241 per 1000
					32 fewer per 1000 (from 109 fewer to 70 more)
				Moderate	233 per 1000
Patient-related outcome - Exit site/tunnel Infection	474 (7 studies) 1 - 55 months	●●●● VERY LOW ^{2,4} due to risk of bias, imprecision	OR 0.8 (0.47 to 1.37)	Study population	173 per 1000
					30 fewer per 1000 (from 83 fewer to 50 more)
				Moderate	125 per 1000
Catheter-related outcome - Migration	319 (5 studies) 1 - 55 months	●●●● HIGH ⁵ due to risk of bias, large effect	OR 0.21 (0.07 to 0.63)	Study population	176 per 1000
					433 fewer per 1000 (from 57 fewer to 161 fewer)
				Moderate	175 per 1000
Catheter-related outcome - Leakage	826 (9 studies) 1-55 months	●●●● VERY LOW ^{2,4} due to risk of bias, imprecision	OR 0.68 (0.4 to 1.92)	Study population	81 per 1000
					9 fewer per 1000 (from 47 fewer to 54 more)
				Moderate	19 per 1000
Catheter-related outcome - Obstruction	665 (6 studies) 1 - 55 months	●●●● LOW ^{2,5} due to risk of bias, large effect	OR 0.39 (0.14 to 1.07)	Study population	123 per 1000
					71 fewer per 1000 (from 104 fewer to 7 more)
				Moderate	137 per 1000
Interventional outcome - Intervention/replacement/revision	165 (4 studies) 1 - 36 months	●●●● MODERATE ^{2,3,5} due to risk of bias, imprecision, large effect	OR 0.32 (0.08 to 1.26)	Study population	237 per 1000
					147 fewer per 1000 (from 213 fewer to 44 more)
				Moderate	237 per 1000
Interventional outcome - Catheter removal for complications	317 (7 studies) 1 - 36 months	●●●● VERY LOW ^{2,4} due to risk of bias, imprecision	OR 0.65 (0.35 to 1.21)	Study population	194 per 1000
					59 fewer per 1000 (from 116 fewer to 32 more)
				Moderate	250 per 1000
Catheter survival - Catheter Survival Year 1	307 (5 studies) 1 - 55 months	●●●● MODERATE ² due to risk of bias	OR 3.93 (1.8 to 8.57)	Study population	750 per 1000
					172 more per 1000 (from 94 more to 213 more)
				Moderate	763 per 1000
Catheter survival - Catheter Survival Year 2	282 (4 studies) 1 - 55 months	●●●● VERY LOW ^{2,3} due to risk of bias, imprecision	OR 2.17 (0.99 to 4.75)	Study population	492 per 1000
					186 more per 1000 (from 3 fewer to 330 more)
				Moderate	524 per 1000

¹The basis for the assumed risk (e.g. the median control group risk across studies) is provided in footnotes. The corresponding risk (and its 95% confidence interval) is based on the assumed risk in the comparison group and the relative effect of the intervention (and its 95% CI).
 CI: Confidence interval; OR: Odds ratio.
 GRADE Working Group grades of evidence
 High quality: Further research is very unlikely to change our confidence in the estimate of effect.
 Moderate quality: Further research is likely to have an important impact on our confidence in the estimate of effect and may change the estimate.
 Low quality: Further research is very likely to have an important impact on our confidence in the estimate of effect and is likely to change the estimate.
 Very low quality: We are very uncertain about the estimate.
² 3 RCTs, Jvo, Tsimoyiannis and Wright
³ Inclusion of observational studies
⁴ Event rates are lower than 300 and 95% confidence interval around the pooled estimate of effect includes both no effect and appreciable benefit
⁵ 95% confidence interval around the pooled estimate of effect includes both no effect and appreciable benefit
⁶ Risk ratio < 0.5

Figure 7. Summary of findings table generated by the GRADE tool.
 doi:10.1371/journal.pone.0056351.g007

The incidence of dialysate leakage is not significantly different between the laparoscopic and open insertion technique. As with the incidence of peritonitis, the time to start PD may also influence the occurrence of leakage. Starting PD shortly after insertion might cause an increased percentage of persistent leakage, for not allowing the peritoneum to heal properly. A possible confounder might be the number of cuffs on the catheter used. Most studies in this meta-analysis used a double-cuffed catheter, Gajjar [32] used single cuffed as well as double cuffed catheters. In the literature, comparative studies indicate no difference in outcome between double and single cuffed catheters [57,58]. However, these studies did not use the laparoscopic insertion technique. It is possible that the number of cuffs used influences the incidence of leakage when using the laparoscopic insertion technique, but not when using the open technique. However, this meta-analysis and review cannot give a solution to this problem.

In case of dysfunctioning catheters, a laparoscopic revision was successfully performed in most cases. Catheter insertion via the open technique required more interventions or revisions, although not significant (P=0.07), which may lead to a lower patient comfort and higher costs. The results might be biased, because not all studies reported whether an intervention was performed in case

of a dysfunctioning catheter. A cost-benefit analysis is recommended at this point.

Most importantly, PD catheters that were inserted using the laparoscopic technique have been demonstrated to have a significantly higher 1 year survival. Remarkably, the 2-year catheter survival is only borderline significantly different between the groups. This can be attributed to the fact that Tsimoyiannis et al. is not included in the analysis, because of a shorter follow-up than 2 years, resulting in a smaller number of analyzed patients.

Most studies analyzed in this meta-analysis, reported the survival in percentages, where a Kaplan-Meier curve is to be preferred. The reporting of proportions might have led to inaccurate survival data.

Although the incidence of most complications, except for catheter migration, individually is not significantly different between laparoscopic and open insertion, all studies combined show that laparoscopically inserted catheters tend to enable better and prolonged PD.

Limitations

In order to include sufficient patient data to draw solid conclusions, both observational and intervention studies were

included. This might have led to selection bias. In our opinion, it was more important to have a larger number of included patients than the inclusion of interventional studies only, despite the fact that cohort studies are more prone to possible bias. Furthermore, the observational studies support the findings of the RCTs, as we confirmed in our sensitivity analysis. According to the assessment using the GRADE tool, we conclude that the evidence of each individual included study varies from very low to high. However, the highest level of evidence was found for the outcome measures that showed significant differences in our analysis. One other possible limitation is that the analysis might be biased because of difference in the individual experience of the operating surgeons. Furthermore, the procedures are not always carried out by one surgeon only. Possible downside of the analyzed studies is the small number of patients in both intervention arms for some outcome measures. Small patient groups increase the chance of getting smaller or larger differences based on random chance. Despite the statistical homogeneity, some outcome measures appear to be

clinically heterogeneous. This might be caused by possible center bias.

Despite these limitations, this meta-analysis is the first step in giving a definite answer as to which procedure of the two (laparoscopic or open insertion technique) might be the better procedure for reducing complications and better PD catheter survival. This systematic review and meta-analysis reveals the potential benefits of laparoscopic PD-catheter insertion. In order to be able to evaluate the true value of laparoscopy in PD-catheter insertion, a large randomized controlled trial is recommended [59].

Author Contributions

Conceived and designed the experiments: SMH JNMIJ FJMFD. Performed the experiments: SMH JAL. Analyzed the data: SMH JAL EWS FJMFD. Contributed reagents/materials/analysis tools: EWS. Wrote the paper: SMH JAL JNMIJ FJMFD.

References

- Fenton SS, Schaubel DE, Desmeules M, Morrison HI, Mao Y, et al. (1997) Hemodialysis versus peritoneal dialysis: a comparison of adjusted mortality rates. *Am J Kidney Dis*. 30: 334–42.
- Maiorca R, Vonesh EF, Cavalli P, De Vecchi A, Giangrande A, et al. (1991) A multicenter, selection-adjusted comparison of patient and technique survivals on CAPD and hemodialysis. *Perit Dial Int*. 11: 118–27.
- Heaf JG, Lokkegaard H, Madsen M (2002) Initial survival advantage of peritoneal dialysis relative to haemodialysis. *Nephrol Dial Transplant*. 17: 112–7.
- Termorshuizen F, Korevaar JC, Dekker FW, Van Manen JG, Boeschoten EW, et al. (2003) Hemodialysis and peritoneal dialysis: comparison of adjusted mortality rates according to the duration of dialysis: analysis of The Netherlands Cooperative Study on the Adequacy of Dialysis 2. *J Am Soc Nephrol*. 14: 2851–60.
- Bargman JM, Thorpe KE, Churchill DN (2001) Relative contribution of residual renal function and peritoneal clearance to adequacy of dialysis: a reanalysis of the CANUSA study. *J Am Soc Nephrol*. 12: 2158–62.
- Ash SR (2003) Chronic peritoneal dialysis catheters: overview of design, placement, and removal procedures. *Semin Dial*. 16: 323–34.
- Davis AS, Reed WP (1983) A leak-free technique for open insertion of peritoneal dialysis catheters. *Surg Gynecol Obstet*. 157: 579–80.
- Robison RJ, Leapman SB, Wetherington GM, Hamburger RJ, Fineberg NS, et al. (1984) Surgical considerations of continuous ambulatory peritoneal dialysis. *Surgery*. 96: 723–30.
- Gadallah MF, Pervez A, el-Shahawy MA, Sorrells D, Zibari G, et al. (1999) Peritoneoscopic versus surgical placement of peritoneal dialysis catheters: a prospective randomized study on outcome. *Am J Kidney Dis*. 33: 118–22.
- Poole GH, Tervit P (2000) Laparoscopic Tenckhoff catheter insertion: a prospective study of a new technique. *Aust N Z J Surg*. 70: 371–3.
- Velasco Garcia MA, Garcia Urena MA, Camero F, Fernandez Ruiz E, Remon Rodriguez C, et al. (1997) Omental entrapping of the peritoneal dialysis catheter solved by a laparoscopic approach. *Perit Dial Int*. 17: 194–5.
- Crabtree JH, Fishman A (1999) Laparoscopic omentectomy for peritoneal dialysis catheter flow obstruction: a case report and review of the literature. *Surg Laparosc Endosc Percutan Tech*. 9: 228–33.
- Crabtree JH, Fishman A (1999) Videolaparoscopic implantation of long-term peritoneal dialysis catheters. *Surg Endosc*. 13: 186–90.
- Jwo SC, Chen KS, Lee CC, Chen HY (2010) Prospective randomized study for comparison of open surgery with laparoscopic-assisted placement of Tenckhoff peritoneal dialysis catheter—a single center experience and literature review. *J Surg Res*. 159: 489–96.
- Ashegh H, Rezaii J, Esfandiari K, Tavakoli H, Abouzari M, et al. (2008) One-port laparoscopic technique for placement of Tenckhoff peritoneal dialysis catheters: report of seventy-nine procedures. *Perit Dial Int*. 28: 622–5.
- Crabtree JH, Burchette RJ (2009) Effective use of laparoscopy for long-term peritoneal dialysis access. *Am J Surg*. 198: 135–41.
- Ko J, Ra W, Bae T, Lee T, Kim HH, et al. (2009) Two-port laparoscopic placement of a peritoneal dialysis catheter with abdominal wall fixation. *Surg Today*. 39: 356–8.
- Yan X, Zhu W, Jiang CM, Huang HF, Zhang M, et al. (2010) Clinical application of one-port laparoscopic placement of peritoneal dialysis catheters. *Scand J Urol Nephrol*. 44: 341–4.
- Kok NF, Lind MY, Hansson BM, Pilzecker D, Mertens zur Borg IR, et al. (2006) Comparison of laparoscopic and mini incision open donor nephrectomy: single blind, randomised controlled clinical trial. *BMJ*. 333: 221.
- Keus F, de Jong JA, Gooszen HG, van Laarhoven CJ (2006) Laparoscopic versus open cholecystectomy for patients with symptomatic cholecystolithiasis. *Cochrane Database Syst Rev*. CD006231.
- Keus F, Gooszen HG, van Laarhoven CJ (2010) Open, small-incision, or laparoscopic cholecystectomy for patients with symptomatic cholecystolithiasis. An overview of Cochrane Hepato-Biliary Group reviews. *Cochrane Database Syst Rev*. CD008318.
- Klarenbeek BR, Bergamaschi R, Veenhof AA, van der Peet DL, van den Broek WT, et al. (2011) Laparoscopic versus open sigmoid resection for diverticular disease: follow-up assessment of the randomized control Sigma trial. *Surg Endosc*. 25: 1121–6.
- Strippoli GF, Tong A, Johnson D, Schena FP, Craig JC (2004) Catheter type, placement and insertion techniques for preventing peritonitis in peritoneal dialysis patients. *Cochrane Database Syst Rev*. CD004680.
- Xie H, Zhang W, Cheng J, He Q (2012) Laparoscopic versus open catheter placement in peritoneal dialysis patients: a systematic review and meta-analysis. *BMC Nephrol*. 13: 69.
- Moher D, Liberati A, Tetzlaff J, Altman DG (2009) Reprint—preferred reporting items for systematic reviews and meta-analyses: the PRISMA statement. *Phys Ther*. 89: 873–80.
- OCEBM Levels of Evidence Working Group Jeremy Howick ICJLL, Paul Glasziou, Trish Greenhalgh, Carl Heneghan, Alessandro Liberati, Ivan Moschetti, Bob Phillips, Hazel Thornton, Olive Goddard and Mary Hodgkinson. OCEBM Levels of Evidence Working Group. “The Oxford 2011 Levels of Evidence”. Oxford Centre for Evidence-Based Medicine.; Available: <http://www.cebm.net/index.aspx?o=5653> Accessed 2012 Oct 1.
- Lo WK, Lui SL, Li FK, Choy BY, Lam MF, et al. (2003) A prospective randomized study on three different peritoneal dialysis catheters. *Perit Dial Int*. 23 Suppl 2: S127–31.
- Brozek J, Oxman A, Schünemann H. GRADEpro. Version 3.2 for Windows ed22008.
- Higgins JP, Altman DG, Gotzsche PC, Juni P, Moher D, et al. (2011) The Cochrane Collaboration’s tool for assessing risk of bias in randomised trials. *BMJ*. 343: d5928.
- Tsimoyiannis EC, Siakas P, Glantzounis G, Toli C, Sferopoulos G, et al. (2000) Laparoscopic placement of the Tenckhoff catheter for peritoneal dialysis. *Surg Laparosc Endosc Percutan Tech*. 10: 218–21.
- Wright MJ, Bel’eed K, Johnson BF, Eadington DW, Sellars L, et al. (1999) Randomized prospective comparison of laparoscopic and open peritoneal dialysis catheter insertion. *Perit Dial Int*. 19: 372–5.
- Gajjar AH, Rhoden DH, Kathuria P, Kaul R, Udupa AD, et al. (2007) Peritoneal dialysis catheters: laparoscopic versus traditional placement techniques and outcomes. *Am J Surg*. 194: 872–5; discussion 5–6.
- Crabtree JH, Fishman A (2005) A laparoscopic method for optimal peritoneal dialysis access. *Am Surg*. 71: 135–43.
- Soontrapornchai P, Simapatanapong T (2005) Comparison of open and laparoscopic secure placement of peritoneal dialysis catheters. *Surg Endosc*. 19: 137–9.
- Ogunc G, Tuncer M, Ogunc D, Yardimsever M, Ersoy F (2003) Laparoscopic omental fixation technique versus open surgical placement of peritoneal dialysis catheters. *Surg Endosc*. 17: 1749–55.
- Draganic B, James A, Booth M, Gani JS (1998) Comparative experience of a simple technique for laparoscopic chronic ambulatory peritoneal dialysis catheter placement. *Aust N Z J Surg*. 68: 735–9.
- Batey CA, Crane JJ, Jenkins MA, Johnston TD, Munch LC (2002) Mini-laparoscopy-assisted placement of Tenckhoff catheters: an improved technique to facilitate peritoneal dialysis. *J Endourol*. 16: 681–4.

38. Lund L, Jonler M (2007) Peritoneal dialysis catheter placement: is laparoscopy an option? *Int Urol Nephrol*. 39: 625–8.
39. Li JR, Chen WM, Yang CK, Shu KH, Ou YC, et al. (2011) A novel method of laparoscopy-assisted peritoneal dialysis catheter placement. *Surg Laparosc Endosc Percutan Tech*. 21: 106–10.
40. Crabtree JH, Fishman A (2000) A laparoscopic approach under local anesthesia for peritoneal dialysis access. *Perit Dial Int*. 20: 757–65.
41. Johnson DW, Wong J, Wiggins KJ, Kirwan R, Griffin A, et al. (2006) A randomized controlled trial of coiled versus straight swan-neck Tenckhoff catheters in peritoneal dialysis patients. *Am J Kidney Dis*. 48: 812–21.
42. Tiong HY, Poh J, Sunderaraj K, Wu YJ, Consigliere DT (2006) Surgical complications of Tenckhoff catheters used in continuous ambulatory peritoneal dialysis. *Singapore Med J*. 47: 707–11.
43. Yang PJ, Lee CY, Yeh CC, Nien HC, Tsai TJ, et al. (2010) Mini-laparotomy implantation of peritoneal dialysis catheters: outcome and rescue. *Perit Dial Int*. 30: 513–8.
44. Liu WJ, Hooi LS (2010) Complications after tenckhoff catheter insertion: a single-centre experience using multiple operators over four years. *Perit Dial Int*. 30: 509–12.
45. Lu CT, Watson DI, Elias TJ, Faull RJ, Clarkson AR, et al. (2003) Laparoscopic placement of peritoneal dialysis catheters: 7 years experience. *ANZ J Surg*. 73: 109–11.
46. Schmidt SC, Pohle C, Langrehr JM, Schumacher G, Jacob D, et al. (2007) Laparoscopic-assisted placement of peritoneal dialysis catheters: implantation technique and results. *J Laparoendosc Adv Surg Tech A*. 17: 596–9.
47. Strippoli GF, Tong A, Johnson D, Schena FP, Craig JC (2004) Antimicrobial agents to prevent peritonitis in peritoneal dialysis: a systematic review of randomized controlled trials. *Am J Kidney Dis*. 44: 591–603.
48. Gadallah MF, Ramdeen G, Mignone J, Patel D, Mitchell L, et al. (2000) Role of preoperative antibiotic prophylaxis in preventing postoperative peritonitis in newly placed peritoneal dialysis catheters. *Am J Kidney Dis*. 36: 1014–9.
49. Figueiredo A, Goh BL, Jenkins S, Johnson DW, Mactier R, et al. (2010) Clinical practice guidelines for peritoneal access. *Perit Dial Int*. 30: 424–9.
50. Attaluri V, Lebeis C, Brethauer S, Rosenblatt S (2010) Advanced laparoscopic techniques significantly improve function of peritoneal dialysis catheters. *J Am Coll Surg*. 211: 699–704.
51. Prischl FC, Wallner M, Kalchmair H, Povacz F, Kramar R (1997) Initial subcutaneous embedding of the peritoneal dialysis catheter—a critical appraisal of this new implantation technique. *Nephrol Dial Transplant*. 12: 1661–7.
52. Ranganathan D, Baer R, Fassett RG, Williams N, Han T, et al. (2010) Randomised controlled trial to determine the appropriate time to initiate peritoneal dialysis after insertion of catheter to minimise complications (Timely PD study). *BMC Nephrol*. 11: 11.
53. Hwang SJ, Chang JM, Chen HC, Tsai MK, Tsai JC, et al. (1998) Smaller insertion angle of Tenckhoff catheter increases the chance of catheter migration in CAPD patients. *Perit Dial Int*. 18: 433–5.
54. Chen WM, Cheng CL (2007) A simple method to prevent peritoneal dialysis catheter tip migration. *Perit Dial Int*. 27: 554–6.
55. Swartz R, Messana J, Rocher L, Reynolds J, Starman B, et al. (1990) The curled catheter: dependable device for percutaneous peritoneal access. *Perit Dial Int*. 10: 231–5.
56. Nielsen PK, Hemmingsen C, Friis SU, Ladefoged J, Olgaard K (1995) Comparison of straight and curled Tenckhoff peritoneal dialysis catheters implanted by percutaneous technique: a prospective randomized study. *Perit Dial Int*. 15: 18–21.
57. Eklund B, Honkanen E, Kyllonen L, Salmela K, Kala AR (1997) Peritoneal dialysis access: prospective randomized comparison of single-cuff and double-cuff straight Tenckhoff catheters. *Nephrol Dial Transplant*. 12: 2664–6.
58. Nessim SJ, Bargman JM, Jassal SV (2010) Relationship between double-cuff versus single-cuff peritoneal dialysis catheters and risk of peritonitis. *Nephrol Dial Transplant*. 25: 2310–4.
59. Hagen SM, van Alphen AM, Ijzermans JN, Dor FJ (2011) Laparoscopic versus open peritoneal dialysis catheter insertion, the LOCI-trial: a study protocol. *BMC Surg*. 11: 35.