

# EUR Research Information Portal

## Fine scale mapping of the 17q22 breast cancer locus using dense SNPs, genotyped within the Collaborative Oncological Gene-Environment Study (COGs)

**Published in:**  
Scientific Reports

**Publication status and date:**  
Published: 01/01/2016

**DOI (link to publisher):**  
[10.1038/srep32512](https://doi.org/10.1038/srep32512)

**Document Version**  
Publisher's PDF, also known as Version of record

### Citation for the published version (APA):

Darabi, H., Beesley, J., Droit, A., Kar, S., Nord, S., Marjaneh, M. M., Soucy, P., Michailidou, K., Ghossaini, M., Wahl, H. F., Bolla, M.K., Wang, Q., Dennis, J., Alonso, M.R., Andrulis, I.L., Anton-Culver, H., Arndt, V., Beckmann, M.W., Benitez, J., ... Dunning, A.M. (2016). Fine scale mapping of the 17q22 breast cancer locus using dense SNPs, genotyped within the Collaborative Oncological Gene-Environment Study (COGs). *Scientific Reports*, 6, Article 32512.  
<https://doi.org/10.1038/srep32512>

[Link to publication on the EUR Research Information Portal](#)

### Terms and Conditions of Use

Except as permitted by the applicable copyright law, you may not reproduce or make this material available to any third party without the prior written permission from the copyright holder(s). Copyright law allows the following uses of this material without prior permission:

- you may download, save and print a copy of this material for your personal use only;
- you may share the EUR portal link to this material.

In case the material is published with an open access license (e.g. a Creative Commons (CC) license), other uses may be allowed. Please check the terms and conditions of the specific license.

### Take-down policy

If you believe that this material infringes your copyright and/or any other intellectual property rights, you may request its removal by contacting us at the following email address: [openaccess.library@eur.nl](mailto:openaccess.library@eur.nl). Please provide us with all the relevant information, including the reasons why you believe any of your rights have been infringed. In case of a legitimate complaint, we will make the material inaccessible and/or remove it from the website.

# SCIENTIFIC REPORTS

OPEN

## Fine scale mapping of the 17q22 breast cancer locus using dense SNPs, genotyped within the Collaborative Oncological Gene-Environment Study (COGs)

Received: 21 April 2016  
Accepted: 03 August 2016  
Published: 07 September 2016

Hatef Darabi<sup>1</sup>, Jonathan Beesley<sup>2,\*</sup>, Arnaud Droit<sup>3,\*</sup>, Siddhartha Kar<sup>4,\*</sup>, Silje Nord<sup>5,\*</sup>, Mahdi Moradi Marjaneh<sup>2,\*</sup>, Penny Soucy<sup>6</sup>, Kyriaki Michailidou<sup>7,8</sup>, Maya Ghoussaini<sup>4</sup>, Hanna Fues Wahl<sup>1</sup>, Manjeet K. Bolla<sup>7</sup>, Qin Wang<sup>7</sup>, Joe Dennis<sup>7</sup>, M. Rosario Alonso<sup>9</sup>, Irene L. Andrulis<sup>10,11</sup>, Hoda Anton-Culver<sup>12</sup>, Volker Arndt<sup>13</sup>, Matthias W. Beckmann<sup>14</sup>, Javier Benitez<sup>15,16</sup>, Natalia V. Bogdanova<sup>17</sup>, Stig E. Bojesen<sup>18,19,20</sup>, Hiltrud Brauch<sup>21,22,23</sup>, Hermann Brenner<sup>13,23,24</sup>, Annegien Broeks<sup>25</sup>, Thomas Brüning<sup>26</sup>, Barbara Burwinkel<sup>27,28</sup>, Jenny Chang-Claude<sup>29,30</sup>, Ji-Yeob Choi<sup>31,32</sup>, Don M. Conroy<sup>4</sup>, Fergus J. Couch<sup>33</sup>, Angela Cox<sup>34</sup>, Simon S. Cross<sup>35</sup>, Kamila Czene<sup>1</sup>, Peter Devilee<sup>36,37</sup>, Thilo Dörk<sup>38</sup>, Douglas F. Easton<sup>4,7</sup>, Peter A. Fasching<sup>14,39</sup>, Jonine Figueroa<sup>40,41</sup>, Olivia Fletcher<sup>42,43</sup>, Henrik Flyger<sup>44</sup>, Eva Galle<sup>45,46</sup>, Montserrat García-Closas<sup>41</sup>, Graham G. Giles<sup>47,48</sup>, Mark S. Goldberg<sup>49,50</sup>, Anna González-Neira<sup>15</sup>, Pascal Guénel<sup>51</sup>, Christopher A. Haiman<sup>52</sup>, Emily Hallberg<sup>53</sup>, Ute Hamann<sup>54</sup>, Mikael Hartman<sup>55,56</sup>, Antoinette Hollestelle<sup>57</sup>, John L. Hopper<sup>48</sup>, Hidemi Ito<sup>58</sup>, Anna Jakubowska<sup>59</sup>, Nichola Johnson<sup>42,43</sup>, Daehee Kang<sup>31,32,60</sup>, Sofia Khan<sup>61</sup>, Veli-Matti Kosma<sup>62,63,64</sup>, Mieke Krieger<sup>57</sup>, Vessela Kristensen<sup>5,65,66</sup>, Diether Lambrechts<sup>45,46</sup>, Loic Le Marchand<sup>67</sup>, Soo Chin Lee<sup>68,69</sup>, Annika Lindblom<sup>70</sup>, Artitaya Lophatananon<sup>71</sup>, Jan Lubinski<sup>59</sup>, Arto Mannermaa<sup>62,63,64</sup>, Siranoush Manoukian<sup>72</sup>, Sara Margolin<sup>73</sup>, Keitaro Matsuo<sup>74</sup>, Rebecca Mayes<sup>4</sup>, James McKay<sup>75</sup>, Alfons Meindl<sup>76</sup>, Roger L. Milne<sup>47,48</sup>, Kenneth Muir<sup>71,77</sup>, Susan L. Neuhausen<sup>78</sup>, Heli Nevanlinna<sup>61</sup>, Curtis Olswold<sup>53</sup>, Nick Orr<sup>42</sup>, Paolo Peterlongo<sup>79</sup>, Guillermo Pita<sup>9</sup>, Katri Pylkäs<sup>80,81</sup>, Anja Rudolph<sup>29</sup>, Suleeporn Sangrajrang<sup>82</sup>, Elinor J. Sawyer<sup>83</sup>, Marjanka K. Schmidt<sup>25</sup>, Rita K. Schmutzler<sup>84,85,86</sup>, Caroline Seynaeve<sup>57</sup>, Mitul Shah<sup>4</sup>, Chen-Yang Shen<sup>87,88</sup>, Xiao-Ou Shu<sup>89</sup>, Melissa C. Southey<sup>90</sup>, Daniel O. Stram<sup>52</sup>, Harald Surowy<sup>27,28</sup>, Anthony Swerdlow<sup>43,91</sup>, Soo H. Teo<sup>92,93</sup>, Daniel C. Tessier<sup>94</sup>, Ian Tomlinson<sup>95</sup>, Diana Torres<sup>54,96</sup>, Thérèse Truong<sup>51</sup>, Celine M. Vachon<sup>53</sup>, Daniel Vincent<sup>94</sup>, Robert Winqvist<sup>80,81</sup>, Anna H. Wu<sup>52</sup>, Pei-Ei Wu<sup>88</sup>, Cheng Har Yip<sup>93</sup>, Wei Zheng<sup>89</sup>, Paul D. P. Pharoah<sup>4,7</sup>, Per Hall<sup>1</sup>, Stacey L. Edwards<sup>2</sup>, Jacques Simard<sup>6</sup>, Juliet D. French<sup>2</sup>, Georgia Chenevix-Trench<sup>2</sup> & Alison M. Dunning<sup>4</sup>

Genome-wide association studies have found SNPs at 17q22 to be associated with breast cancer risk. To identify potential causal variants related to breast cancer risk, we performed a high resolution fine-mapping analysis that involved genotyping 517 SNPs using a custom Illumina iSelect array (iCOGS) followed by imputation of genotypes for 3,134 SNPs in more than 89,000 participants of European ancestry from the Breast Cancer Association Consortium (BCAC). We identified 28 highly correlated common variants, in a 53 Kb region spanning two introns of the *STXBP4* gene, that are strong candidates for driving breast cancer risk (lead SNP rs2787486 (OR = 0.92; CI 0.90–0.94;  $P = 8.96 \times 10^{-15}$ )) and are correlated with two previously reported risk-associated variants at this locus, SNPs rs6504950 (OR = 0.94,  $P = 2.04 \times 10^{-09}$ ,  $r^2 = 0.73$  with lead SNP) and rs1156287 (OR = 0.93,  $P = 3.41 \times 10^{-11}$ ,  $r^2 = 0.83$  with lead SNP). Analyses indicate only one causal SNP in the region and several enhancer elements targeting *STXBP4* are located within the 53 kb association signal. Expression

**studies in breast tumor tissues found SNP rs2787486 to be associated with increased *STXBP4* expression, suggesting this may be a target gene of this locus.**

<sup>1</sup>Department of Medical Epidemiology and Biostatistics, Karolinska Institutet, Stockholm, Sweden. <sup>2</sup>Department of Genetics, QIMR Berghofer Medical Research Institute, Brisbane, Australia. <sup>3</sup>Département de Médecine Moléculaire, Faculté de Médecine, Centre Hospitalier Universitaire de Québec Research Center, Laval University, Québec City, Canada. <sup>4</sup>Centre for Cancer Genetic Epidemiology, Department of Oncology, University of Cambridge, Cambridge, UK. <sup>5</sup>Department of Cancer Genetics, Institute for Cancer Research, Oslo University Hospital Radiumhospitalet, Oslo, Norway. <sup>6</sup>Genomics Center, Centre Hospitalier Universitaire de Québec Research Center, Laval University, Québec City, Canada. <sup>7</sup>Centre for Cancer Genetic Epidemiology, Department of Public Health and Primary Care, University of Cambridge, Cambridge, UK. <sup>8</sup>Department of Electron Microscopy/Molecular Pathology, The Cyprus Institute of Neurology and Genetics, Nicosia, Cyprus. <sup>9</sup>Human Genotyping-CEGEN Unit, Human Cancer Genetic Program, Spanish National Cancer Research Centre, Madrid, Spain. <sup>10</sup>Lunenfeld-Tanenbaum Research Institute of Mount Sinai Hospital, Toronto, Canada. <sup>11</sup>Department of Molecular Genetics, University of Toronto, Toronto, Canada. <sup>12</sup>Department of Epidemiology, University of California Irvine, Irvine, CA, USA. <sup>13</sup>Division of Clinical Epidemiology and Aging Research, German Cancer Research Center (DKFZ), Heidelberg, Germany. <sup>14</sup>Department of Gynaecology and Obstetrics, University Hospital Erlangen, Friedrich-Alexander University Erlangen-Nuremberg, Comprehensive Cancer Center Erlangen-EMN, Erlangen, Germany. <sup>15</sup>Human Cancer Genetics Program, Spanish National Cancer Research Centre, Madrid, Spain. <sup>16</sup>Centro de Investigación en Red de Enfermedades Raras, Valencia, Spain. <sup>17</sup>Department of Radiation Oncology, Hannover Medical School, Hannover, Germany. <sup>18</sup>Copenhagen General Population Study, Herlev and Gentofte Hospital, Copenhagen University Hospital, Herlev, Denmark. <sup>19</sup>Department of Clinical Biochemistry, Herlev and Gentofte Hospital, Copenhagen University Hospital, Herlev, Denmark. <sup>20</sup>Faculty of Health and Medical Sciences, University of Copenhagen, Copenhagen, Denmark. <sup>21</sup>Dr. Margarete Fischer-Bosch-Institute of Clinical Pharmacology, Stuttgart, Germany. <sup>22</sup>University of Tübingen, Tübingen, Germany. <sup>23</sup>German Cancer Consortium (DKTK), German Cancer Research Center (DKFZ), Heidelberg, Germany. <sup>24</sup>Division of Preventive Oncology, German Cancer Research Center (DKFZ) and National Center for Tumor Diseases (NCT), Heidelberg, Germany. <sup>25</sup>Netherlands Cancer Institute, Antoni van Leeuwenhoek hospital, Amsterdam, The Netherlands. <sup>26</sup>Institute for Prevention and Occupational Medicine of the German Social Accident Insurance, Institute of the Ruhr University Bochum, Bochum, Germany. <sup>27</sup>Department of Obstetrics and Gynecology, University of Heidelberg, Heidelberg, Germany. <sup>28</sup>Molecular Epidemiology Group, German Cancer Research Center (DKFZ), Heidelberg, Germany. <sup>29</sup>Division of Cancer Epidemiology, German Cancer Research Center (DKFZ), Heidelberg, Germany. <sup>30</sup>University Cancer Center Hamburg (UCCH), University Medical Center Hamburg-Eppendorf, Hamburg, Germany. <sup>31</sup>Department of Biomedical Sciences, Seoul National University College of Medicine, Seoul, Korea. <sup>32</sup>Cancer Research Institute, Seoul National University, Seoul, Korea. <sup>33</sup>Department of Laboratory Medicine and Pathology, Mayo Clinic, Rochester, MN, USA. <sup>34</sup>Sheffield Cancer Research, Department of Oncology and Metabolism, University of Sheffield, Sheffield, UK. <sup>35</sup>Academic Unit of Pathology, Department of Neuroscience, University of Sheffield, Sheffield, UK. <sup>36</sup>Department of Pathology, Leiden University Medical Center, Leiden, The Netherlands. <sup>37</sup>Department of Human Genetics, Leiden University Medical Center, Leiden, The Netherlands. <sup>38</sup>Gynaecology Research Unit, Hannover Medical School, Hannover, Germany. <sup>39</sup>David Geffen School of Medicine, Department of Medicine Division of Hematology and Oncology, University of California at Los Angeles, Los Angeles, CA, USA. <sup>40</sup>Usher Institute of Population Health Sciences and Informatics, The University of Edinburgh Medical School, Edinburgh, UK. <sup>41</sup>Division of Cancer Epidemiology and Genetics, National Cancer Institute, Rockville, MD, USA. <sup>42</sup>Breakthrough Breast Cancer Research Centre, The Institute of Cancer Research, London, UK. <sup>43</sup>Division of Breast Cancer Research, The Institute of Cancer Research, London, UK. <sup>44</sup>Department of Breast Surgery, Herlev and Gentofte Hospital, Copenhagen University Hospital, Herlev, Denmark. <sup>45</sup>Vesalius Research Center, Leuven, Belgium. <sup>46</sup>Laboratory for Translational Genetics, Department of Oncology, University of Leuven, Leuven, Belgium. <sup>47</sup>Cancer Epidemiology Centre, Cancer Council Victoria, Melbourne, Australia. <sup>48</sup>Centre for Epidemiology and Biostatistics, Melbourne School of Population and Global Health, The University of Melbourne, Melbourne, Australia. <sup>49</sup>Department of Medicine, McGill University, Montreal, Canada. <sup>50</sup>Division of Clinical Epidemiology, Royal Victoria Hospital, McGill University, Montreal, Canada. <sup>51</sup>Cancer & Environment Group, Center for Research in Epidemiology and Population Health (CESP), INSERM, University Paris-Sud, University Paris-Saclay, Villejuif, France. <sup>52</sup>Department of Preventive Medicine, Keck School of Medicine, University of Southern California, Los Angeles, CA, USA. <sup>53</sup>Department of Health Sciences Research, Mayo Clinic, Rochester, MN, USA. <sup>54</sup>Molecular Genetics of Breast Cancer, German Cancer Research Center (DKFZ), Heidelberg, Germany. <sup>55</sup>Saw Swee Hock School of Public Health, National University of Singapore, Singapore, Singapore. <sup>56</sup>Department of Surgery, National University Health System, Singapore, Singapore. <sup>57</sup>Department of Medical Oncology, Family Cancer Clinic, Erasmus MC Cancer Institute, Rotterdam, The Netherlands. <sup>58</sup>Division of Epidemiology and Prevention, Aichi Cancer Center Research Institute, Nagoya, Japan. <sup>59</sup>Department of Genetics and Pathology, Pomeranian Medical University, Szczecin, Poland. <sup>60</sup>Department of Preventive Medicine, Seoul National University College of Medicine, Seoul, Korea. <sup>61</sup>Department of Obstetrics and Gynecology, Helsinki University Hospital, University of Helsinki, Helsinki, Finland. <sup>62</sup>Cancer Center of Eastern Finland, University of Eastern Finland, Kuopio, Finland. <sup>63</sup>Institute of Clinical Medicine, Pathology and Forensic Medicine, University of Eastern Finland, Kuopio, Finland. <sup>64</sup>Imaging Center, Department of Clinical Pathology, Kuopio University Hospital, Kuopio, Finland. <sup>65</sup>K.G. Jebsen Center for Breast Cancer Research, Institute of Clinical Medicine, Faculty of Medicine, University of Oslo, Oslo, Norway. <sup>66</sup>Department of Clinical Molecular Biology, Oslo University Hospital, University of Oslo, Oslo, Norway. <sup>67</sup>University of Hawaii Cancer Center, Honolulu, HI, USA. <sup>68</sup>Department of Hematology-Oncology, National University Health System, Singapore, Singapore. <sup>69</sup>Cancer Science Institute of Singapore, National University of Singapore,

Singapore, Singapore. <sup>70</sup>Department of Molecular Medicine and Surgery, Karolinska Institutet, Stockholm, Sweden. <sup>71</sup>Division of Health Sciences, Warwick Medical School, Warwick University, Coventry, UK. <sup>72</sup>Unit of Molecular Bases of Genetic Risk and Genetic Testing, Department of Preventive and Predictive Medicine, Fondazione IRCCS (Istituto Di Ricovero e Cura a Carattere Scientifico) Istituto Nazionale dei Tumori (INT), Milan, Italy. <sup>73</sup>Department of Oncology - Pathology, Karolinska Institutet, Stockholm, Sweden. <sup>74</sup>Division of Molecular Medicine, Aichi Cancer Center Research Institute, Nagoya, Japan. <sup>75</sup>International Agency for Research on Cancer, Lyon, France. <sup>76</sup>Division of Gynaecology and Obstetrics, Technische Universität München, Munich, Germany. <sup>77</sup>Institute of Population Health, University of Manchester, Manchester, UK. <sup>78</sup>Department of Population Sciences, Beckman Research Institute of City of Hope, Duarte, CA, USA. <sup>79</sup>FOM, The FIRC (Italian Foundation for Cancer Research) Institute of Molecular Oncology, Milan, Italy. <sup>80</sup>Laboratory of Cancer Genetics and Tumor Biology, Cancer and Translational Medicine Research Unit, Biocenter Oulu, University of Oulu, Oulu, Finland. <sup>81</sup>Laboratory of Cancer Genetics and Tumor Biology, Northern Finland Laboratory Centre Oulu, Oulu, Finland. <sup>82</sup>National Cancer Institute, Bangkok, Thailand. <sup>83</sup>Research Oncology, Guy's Hospital, King's College London, London, UK. <sup>84</sup>Center for Hereditary Breast and Ovarian Cancer, University Hospital of Cologne, Cologne, Germany. <sup>85</sup>Center for Integrated Oncology (CIO), University Hospital of Cologne, Cologne, Germany. <sup>86</sup>Center for Molecular Medicine Cologne (CMMC), University of Cologne, Cologne, Germany. <sup>87</sup>Institute of Biomedical Sciences, Academia Sinica, Taipei, Taiwan. <sup>88</sup>Taiwan Biobank, Institute of Biomedical Sciences, Academia Sinica, Taipei, Taiwan. <sup>89</sup>Division of Epidemiology, Department of Medicine, Vanderbilt-Ingram Cancer Center, Vanderbilt University School of Medicine, Nashville, TN, USA. <sup>90</sup>Department of Pathology, The University of Melbourne, Melbourne, Australia. <sup>91</sup>Division of Genetics and Epidemiology, The Institute of Cancer Research, London, UK. <sup>92</sup>Cancer Research Initiatives Foundation, Subang Jaya, Selangor, Malaysia. <sup>93</sup>Breast Cancer Research Unit, Cancer Research Institute, University Malaya Medical Centre, Kuala Lumpur, Malaysia. <sup>94</sup>McGill University and Génome Québec Innovation Centre, Montréal, Canada. <sup>95</sup>Wellcome Trust Centre for Human Genetics and Oxford NIHR Biomedical Research Centre, University of Oxford, Oxford, UK. <sup>96</sup>Institute of Human Genetics, Pontificia Universidad Javeriana, Bogota, Colombia. \*These authors contributed equally to this work. Correspondence and requests for materials should be addressed to H.D. (email: hatef.darabi@ki.se)

Breast cancer is one of the most common epithelial malignancies in women<sup>1,2</sup>. Ahmed *et al.*<sup>3</sup> carried out a multi-stage genome wide association study (GWAS) for breast cancer susceptibility involving studies from the Cancer Genetic Markers of Susceptibility (CGEMS) and Breast Cancer Association Consortium (BCAC) and reported strong evidence for a susceptibility locus at 17q22 with single nucleotide polymorphism (SNP) rs6504950, OR = 0.95, 95% confidence interval (CI) 0.92–0.97,  $P = 1.4 \times 10^{-8}$ . Turnbull *et al.*<sup>4</sup> found confirmatory evidence for association with SNPs at the same locus; they reported a breast cancer risk association with SNP rs1156287 (OR = 0.91; 95% CI 0.85–0.97;  $P = 5.8 \times 10^{-3}$ ), which lies 20 kb from originally reported SNP rs6504950 ( $r^2 = 0.91$ ). Using data from the National Cancer Institute's Breast and Prostate Cancer Cohort Consortium (BPC3), Campa *et al.*<sup>5</sup> also confirmed the association with rs6504950 (OR = 0.92; 95% CI 0.88–0.97;  $P = 5.83 \times 10^{-4}$ ). Broeks *et al.*<sup>6</sup> further investigated this association with respect to tumor estrogen receptor (ER) status, and reported that rs6504950 had stronger association with ER positive (ER+; OR = 0.93; 95% CI 0.90–0.95;  $P = 7.2 \times 10^{-7}$ ) than ER negative disease (ER–; OR = 1.00; 95% CI 0.95–1.05;  $P = 0.94$ ). Tang *et al.*<sup>7</sup> conducted a meta-analysis which further confirmed the association with SNP rs6504950 (OR = 0.93; 95% CI 0.87–0.99). SNP rs6504950 lies in an intron of *STXBP4* (Syntax binding protein 4) and two other genes are found within 200 kb including *COX11* (cytochrome C assembly protein 11) and *TOM1L1* (target of myb1-like1). As part of the Collaborative Oncological Gene-Environment Study (COGS), we conducted a comprehensive fine-scale mapping of this 17q22 breast cancer susceptibility locus using 517 SNPs chosen to give dense coverage across this locus. These were genotyped on a custom-designed Illumina iSelect genotyping array (iCOGS) in 50 studies participating in BCAC. We used these data to define the variants most strongly associated with risk, and combined these data with additional *in-silico* and functional data in an attempt to determine the most likely causal variants.

## Material and Methods

**Genetic Mapping.** *Tagging strategy for the fine-scale mapping.* We defined the region for fine-mapping by identifying the flanking SNPs with minor allele frequency (MAF) > 2% and detectable correlation ( $r^2 > 0.1$ ) with rs6504950, based on the 1000 genomes project European population (March 2010 Pilot version 60 CEU project data). From this 468 kb interval we selected all SNPs correlated with rs6504950 at  $r^2 > 0.1$ , plus a set of SNPs designed to tag all remaining SNPs with  $r^2 > 0.9$ . We thus aimed to genotype 525 SNPs, between chromosome 17 positions 52,816,899 and 53,284,506 (NCBI build 37 assembly), that had an Illumina designability score (DS) > 0.9. Of these, 517 were successfully genotyped on the array and passed QC filters.

*iCOGS genotyping and imputation.* Case and control samples were drawn from studies participating in the BCAC, of which 41 (total: 46450 cases/42600 controls) were predominantly of European ancestry and nine (6269 cases/6624 controls) of Asian ancestry. We performed iCOGS genotyping in four centres, as part of the Collaborative Oncological Gene-Environment Study (COGS). All BCAC studies had local human ethical approvals as described previously<sup>8</sup>. We then used the genotype data from 517 SNPs that passed quality control to impute genotypes, among European subjects, at all additional known variants in the interval, using IMPUTE version 2.0 (IMPUTE2; without pre-phasing) and the 1000 genome project multi-population data (March 2012 version) as a reference panel<sup>9,10</sup>. IMPUTE2 was run with default parameters and "effective size" of the population  $N_e = 20,000$ . Using an imputation- $r^2 > 0.3$  in Europeans, we successfully imputed 3,134 SNPs (MAF  $\geq 1\%$ ).

**Statistical Analysis.** For each SNP, we estimated the per-allele log-odds ratio (OR) and standard error using logistic regression, including principal components and per-study fixed-effects to capture study-specific

differences as previously described<sup>8</sup>. For the analyses of European subjects, we included the first six principal components as covariates, together with a seventh component derived specifically for one study (LMBC) for which there was substantial inflation not accounted for by the components derived from the analysis of all studies (this component was set to zero for all other studies). For the analysis of Asian subjects, we included two principal components<sup>8</sup>. We estimated per allele ORs under the assumption of a log-additive mode of inheritance, i.e. SNPs were coded according to the number of minor alleles 0, 1 or 2. We estimated main effects by subtype specific status (ER +/-) using case-control logistic regression and restricting the case sample to a specific subtype. We evaluated heterogeneity of association across tumour subtypes in a case-only analysis, treating subtype status as a dependent variable. We derived the *P* values by means of a likelihood-ratio test (one degree of freedom). Tests were two-sided. We carried out analyses separately among women of European and of Asian ancestry, defined by multiple dimensional scaling as previously described<sup>8</sup>. We performed multiple logistic regression analyses to identify SNPs independently associated with each phenotype. To identify the most parsimonious model, we included all SNPs with a  $P < 10^{-4}$  and  $MAF \geq 2\%$  in the single SNP analysis in forward selection regression analyses, utilizing the step function in  $R^{11}$  with penalty term set to  $20^{12}$ ; we also used a joint analysis of all SNPs using a Bayesian-inspired penalised maximum likelihood approach (HyperLasso)<sup>13</sup>. To correctly account for uncertainty in the data resulting from the imputation process, we conducted analysis by regressing on the allele dosage for each genotype. For HyperLasso we utilized the most probable genotype as input, based on the posterior probability from the imputation algorithm (set to missing if all posterior probabilities were  $< 0.9$ ).

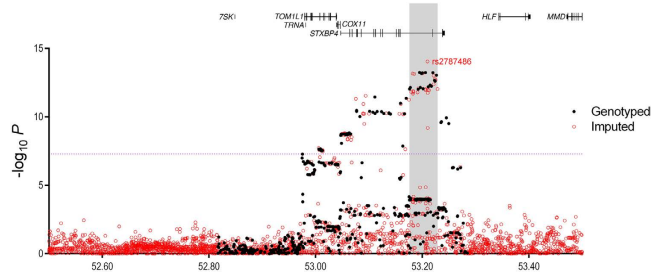
**Bioinformatic analyses.** We combined multiple sources of *in silico* annotation from public databases to help identify potential functional SNPs. To investigate functional elements enriched across the previously defined fine-mapped region, more specifically in the region encompassing the strongest candidate causal SNPs, we analysed chromatin biofeatures data from the Encyclopedia of DNA Elements (ENCODE) Project<sup>14</sup> namely: Chromatin State Segmentation by Hidden Markov Models (chromHMM), DNase I hypersensitivity sites (DHS) and histone modifications of epigenetic markers H3K4, H3K9, and H3K27 in Human Mammary Epithelial Cells (HMEC) and MCF7 breast cancer cells. To identify putative target genes, we examined chromatin interactions between distal and proximal regulatory transcription-factor binding sites and gene promoters, using Chromatin Interaction Analysis by Paired End Tag (ChiA-PET) in MCF7 cells. This detects genome-wide interactions associated with CCCTC-binding factor (CTCF) and DNA polymerase II (Pol2) – both involved in transcriptional regulation<sup>15</sup>. Putative regulatory elements were determined using data from ENCODE, Roadmap Epigenomics<sup>16</sup>, the “Predicting Specific Tissue Interactions of Genes and Enhancers” (PreSTIGE)<sup>17</sup> algorithm, Hnisz<sup>18</sup> and FANTOM. Intersections between candidate causal variants and regulatory elements were identified using Galaxy, and visualised in the UCSC Genome Browser. We used the ENCODE RNAseq data to evaluate the expression of exons across the 17q22 locus in HMEC and MCF7 cell lines. The alignment files for HMEC (4 biological replicates) and MCF7 (19 biological replicates) were downloaded from ENCODE and the read count in the defined region was extracted and normalized in reads per million (RPM).

**Allele specific expression (ASE) analysis.** ASE analysis was performed using The Cancer Genome Atlas (TCGA) breast cancer data as described previously<sup>19</sup>. SNP rs2787481, genotyped on the Affymetrix SNP Array 6.0 was used as a representative SNP for the candidate causal variants ( $r^2 = 0.90$  with rs2787486). SNP rs2787481 genotype calls and the corresponding confidence scores were retrieved using level 2 TCGA SNP array Birdseed data downloaded from TCGA portal. Genotypes with confidence scores equal to or above 0.1 were excluded.

We utilised RNA-sequencing data from 742 breast cancer samples from women of Caucasian ancestry. The corresponding RNA-sequencing BAM files and metadata are available from the Cancer Genomics Hub (CGHub). Markers used to assess relative allelic expression were exonic SNPs located in *KIF2B*, *TOM1L1*, *COX11*, *STXBP4*, *HLE*, *MMD*, *TMEM100*, *PCTP*, and *ANKFN1* extracted from dbSNP human Build 142. Homozygote marker SNPs, those with low coverage (less than 15x) and those within overlapping regions of the target genes, were removed. RNA-sequencing read counts on SNP sites for reference and alternative alleles were computed. The major allele fraction ( $\mu$ ), representing allelic imbalance for each marker SNP, was computed and an average of allelic imbalances for each gene was calculated for individual tumour samples. Marker SNPs with extreme  $\mu$  values ( $\mu > 0.75$ ) were not included in the analysis. Level 3 SNP array data were downloaded from TCGA portal and GISTIC version 2.0.16 was used to identify copy number variations (CNVs) for each sample. Samples with low or high CNV levels, as presented in the gene-based GISTIC module report, were excluded from the analysis of the corresponding gene.

Allelic imbalance for the target transcripts was compared between rs2787481 heterozygote (CT) and homozygote (CC and TT) samples using Levene's Test for equality of variances. *KIF2B*, *TMEM100*, and *ANKFN1* were excluded from the statistical analyses as they did not have enough informative marker SNPs left after applying the filtering criteria.

**Local gene expression by SNP (eQTL) association analysis.** We examined the association of all genotyped or imputed SNPs with expression of nine genes (*KIF2B*, *TOM1L1*, *COX11*, *STXBP4*, *HLE*, *MMD*, *TMEM100*, *PCTP*, and *ANKFN1*) in the 1 Mb region on either side of the fine-mapping interval, using data from the Molecular Taxonomy of Breast Cancer International Consortium (METABRIC) study. METABRIC comprises normal tissues adjacent to tumours from breast cancer patients genetically confirmed to be of European ancestry<sup>20</sup>. The samples ( $n = 135$ ) were assayed for expression with the Illumina HT-12 v3 microarray. Matched germline SNP genotypes were derived using the Affymetrix SNP 6.0 array. Genotyping quality control and imputation for the METABRIC data are described in Guo *et al.*<sup>21</sup>. Association between genotype and expression was tested by linear regression with FDR control as implemented in the MatrixEQTL<sup>22</sup> package in  $R^{11}$ .



**Figure 1. Association Results for Overall Breast Cancer Risk.** Directly genotyped SNPs are shown as filled black circles, and imputed SNPs ( $r^2 > 0.3$ ,  $MAF > 0.02$ ) are shown as open red circles, plotted as the negative log of the  $P$  value against relative position across the locus. A schematic of the gene structures is shown. Signals, encompassing all SNPs with a likelihood ratio of  $< 1:100$  compared with the most significant SNP, are labelled and are shown as grey regions. The dashed purple line represents genome-wide significance ( $P < 5 \times 10^{-8}$ ).

Four additional SNP-expression data sets were available and analysed separately: (1) NB116 consists of 116 Caucasian normal breast samples (the majority of Norwegian descent) with  $n = 10$  tumour-adjacent normal biopsies. (2) BC241 consists of 241 Caucasian tumor (all stages) samples (the majority of Norwegian origin). These were both genotyped on the “iCOGS” SNP array, and gene expression levels were measured with Agilent 44K<sup>23</sup>. (3) NB93 consists of 93 Caucasian adjacent normal breast samples from TCGA. Birdseed processed germline genotype data from the Affy6 SNP array were obtained from the TCGA dbGaP data portal<sup>24</sup>. (4) BC765 consists of 765 Caucasian breast tumour samples from TCGA<sup>24</sup>. Gene expression levels were assayed by RNA sequencing, RSEM (RNAseq by Expectation-Maximization<sup>25</sup>) normalized per gene or isoform, as obtained from the TCGA consortium<sup>24</sup>. Unexpressed and minimally expressed genes/isoforms whose sum in expression level was less than ten were excluded, and the data  $\log_2$  transformed prior to analysis. The influence of SNPs on local gene expression (transcripts within 1 MB from the most strongly associated SNP) was assessed using a linear regression model, as implemented in the R<sup>11</sup> library eMAP<sup>26</sup>. An additive effect was assumed by modelling the patient’s number of copies of the rare allele, i.e. 0, 1 or 2 for a given genotype. Correction for multiple testing was performed using the false discovery rate (FDR) as implemented in the  $p.adjust$  function in R.

eQTL data from the Genotype-Tissue Expression (GTEx) project<sup>27</sup> were downloaded from the v6 release.

## Results

A total of 517 SNPs at chromosome 17 positions 52,816,899 to 53,284,506 (NCI build 37 assembly) were successfully genotyped using the iCOGS chip. Genotypes of other common variants across the region were imputed in the European studies using known genotypes in combination with a reference panel from the 1000 Genomes Project. 3,134 SNPs and insertion/deletion (indel) polymorphisms were reliably imputed (imputation  $r^2$  score  $> 0.3$ ,  $MAF \geq 0.01$ ) and included in further analysis together with the 517 genotyped SNPs. In the European studies 139 genotyped or imputed SNPs were associated with overall risk of breast cancer ( $P$  values  $< 10^{-7}$ ) (Fig. 1). This set included SNPs rs6504950 and rs1156287 ( $r^2 = 0.84$ ), both previously reported<sup>3,4</sup> to be associated with breast cancer risk among Europeans (Supplementary Table 1).

Among the European ancestry studies the strongest association detected was with imputed SNP rs2787486 (OR [minor/major allele] = 0.92 [C/A]; 95% CI 0.90–0.94;  $P = 8.96 \times 10^{-15}$ ), located in an intron of *STXBP4* and strongly correlated with both previously reported GWAS hits ( $r^2 = 0.83$  with rs1156287;  $r^2 = 0.73$  with rs6504950). The strongest genotyped SNP association was rs244353 (OR = 0.92; 95% CI 0.90–0.94;  $P = 5.75 \times 10^{-14}$ ) which lies ~15 kb from rs2787486 and is correlated with it ( $r^2 = 0.99$ ). A regression model suggests that both rs2787486 ( $P = 0.02$ ) and rs244353 ( $P = 0.11$ ) are detecting the same risk association. To dissect further the observed associations all SNPs displaying evidence for association ( $P < 10^{-4}$  and  $MAF \geq 0.02$ ) with overall breast cancer risk (228 SNPs, Supplementary Table 1) in European studies were included in a forward stepwise regression model. This analysis identified a single association signal marked by top imputed variant rs2787486 (that is, no further SNPs were associated after adjustment for rs2787486). We also utilized penalized logistic regression models (based on the normal exponential gamma probability density) implemented in HyperLasso<sup>13</sup>, including all typed and imputed variants with a specified lambda of 0.05 and a penalty of 491 for overall risk (based on the sample size and a type I error of 0.001)<sup>28</sup>.

In this analysis, the best fitting model also included just one SNP, rs2787486.

On the assumption of a single causal variant, we calculated the likelihood ratio of each SNP relative to rs2787486 with respect to overall risk and SNPs with a relative likelihood ratio of  $< 1:100$  were excluded from further consideration<sup>29</sup>. After this exclusion process 28 SNPs (17 genotyped and 11 imputed), spanning 52.3 Kb (positions 53,176,211 to 53,228,543), remained as candidate causal variants (Table 1, Supplementary Table 2). These SNPs have very similar allele frequencies and are strongly correlated with SNP rs2787486. The two SNPs first reported to be associated with breast cancer were both excluded from this set of 28 candidate causal variants by likelihood ratio tests relative to SNP rs2787486 (likelihood ratios: 1:177439 for rs6504950 and 1:3271 for rs1156287). Caswell *et al.*<sup>30</sup> subsequently identified marker rs11658717 as a potential causal candidate, but this variant is ranked 49<sup>th</sup> and has a likelihood ratio of 1:3875 relative to lead SNP rs2787486 - hence this has also been ruled out as potential causal candidate by our analysis.

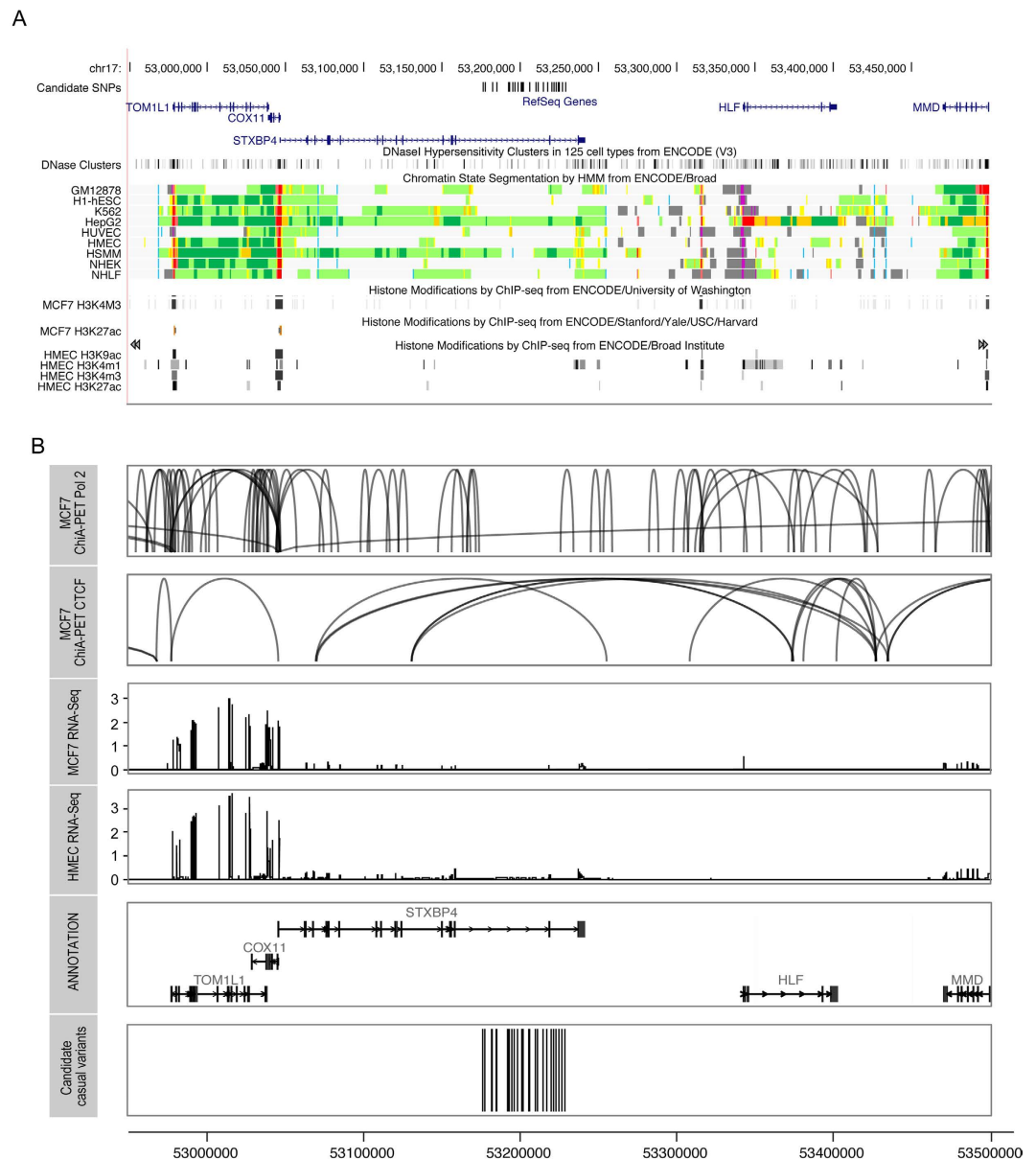
Population		European	Candidate Causal SNPs	Position <sup>b</sup>	r <sup>2c</sup>	RL <sup>c</sup>	Info <sup>d</sup>	P-value <sup>e</sup>	OR (95% CI) <sup>e</sup>
			rs2787497 <sup>§</sup>	53176211	0.89	0.01	1	9.27E-13	0.93 (0.91, 0.95)
<b>Independent Signal</b>		rs2787486 <sup>†</sup>	rs8082622 <sup>§</sup>	53177567	0.90	0.01	1	7.06E-13	0.93 (0.91, 0.94)
			rs2529510 <sup>§§</sup>	53182046	0.84	0.13	0.91	6.92E-14	0.92 (0.90, 0.94)
<b>Major/Minor (MAF)</b>		A/C (0.28)	rs244373 <sup>§§</sup>	53184949	0.99	0.13	0.98	7.30E-14	0.92 (0.90, 0.94)
			rs244358 <sup>§</sup>	53192231	0.89	0.01	1	9.68E-13	0.93 (0.91, 0.95)
<b>Overall Risk<sup>a</sup></b>	<b>P-value</b>	8.96E-15	rs187242 <sup>§§</sup>	53192946	0.98	0.01	0.98	8.17E-13	0.93 (0.91, 0.95)
	<b>OR (95% CI)</b>	0.92 (0.90, 0.94)	rs244353 <sup>§</sup>	53194769	0.99	0.16	1	5.75E-14	0.92 (0.90, 0.94)
			rs244348 <sup>§</sup>	53196291	0.90	0.01	1	7.08E-13	0.93 (0.91, 0.94)
<b>ER+<sup>a</sup></b>	<b>P-value</b>	1.39E-14	rs244342 <sup>§</sup>	53198407	0.99	0.14	1	6.73E-14	0.92 (0.90, 0.94)
	<b>OR (95% CI)</b>	0.91 (0.88, 0.93)	rs244338 <sup>§</sup>	53200418	0.99	0.15	1	6.21E-14	0.92 (0.90, 0.94)
			rs244337 <sup>§§</sup>	53201124	0.99	0.14	0.99	6.60E-14	0.92 (0.90, 0.94)
<b>ER-<sup>a</sup></b>	<b>P-value</b>	0.0177	rs244336 <sup>§</sup>	53201502	0.90	0.01	1	8.80E-13	0.93 (0.91, 0.95)
	<b>OR (95% CI)</b>	0.95 (0.91, 0.99)	chr17:53205761:D <sup>§§</sup>	53205761	0.90	0.01	0.99	9.42E-13	0.93 (0.91, 0.95)
			rs2628321 <sup>§</sup>	53205917	0.99	0.16	1	5.88E-14	0.92 (0.90, 0.94)
			rs2787486 <sup>§§</sup>	53209774			0.96	8.96E-15	0.92 (0.90, 0.94)
			rs2787481 <sup>§</sup>	53211110	0.90	0.01	1	6.44E-13	0.92 (0.91, 0.94)
			rs244315 <sup>§</sup>	53214654	0.90	0.02	1	4.72E-13	0.92 (0.91, 0.94)
			rs244317 <sup>§</sup>	53216985	0.90	0.02	1	5.79E-13	0.92 (0.91, 0.94)
			rs2628316 <sup>§</sup>	53219837	0.99	0.15	1	6.00E-14	0.92 (0.90, 0.94)
			chr17:53221365:I <sup>§§</sup>	53221365	0.99	0.10	0.98	9.68E-14	0.92 (0.90, 0.94)
			rs244318 <sup>§§</sup>	53221368	0.97	0.02	0.98	4.19E-13	0.93 (0.91, 0.95)
			rs244319 <sup>§</sup>	53222874	0.98	0.04	1	2.19E-13	0.93 (0.91, 0.94)
			rs244320 <sup>§</sup>	53222920	0.98	0.04	1	2.19E-13	0.93 (0.91, 0.94)
			rs244321 <sup>§§</sup>	53223998	0.98	0.05	0.99	1.72E-13	0.92 (0.91, 0.94)
			rs10432032 <sup>§</sup>	53224088	0.98	0.04	1	2.47E-13	0.93 (0.91, 0.94)
			rs244322 <sup>§§</sup>	53224759	0.98	0.05	0.99	2.03E-13	0.93 (0.91, 0.94)
			rs2628315 <sup>§</sup>	53226622	0.99	0.10	1	9.02E-14	0.92 (0.90, 0.94)
			rs244294 <sup>§§</sup>	53228543	0.98	0.01	0.99	9.28E-13	0.93 (0.91, 0.95)

**Table 1. Association result of independent signal among European and the set of highly correlated common variants.** <sup>a</sup>P-value, Odds ratio (OR) and 95% Confidence Interval (CI) for association with overall breast cancer risk, Estrogen Positive (ER+) and Estrogen Negative (ER-) disease. <sup>b</sup>Build 37 coordinates on chromosome 17. <sup>c</sup>Correlation (r<sup>2</sup>) and Relative Likelihood ratio (RL) with respect to lead SNP rs2787486. <sup>d</sup>IMPUTE2 info score. <sup>e</sup>P-value, Odds ratio (OR) and 95% Confidence Interval (CI) for association with overall breast cancer risk. <sup>§/§§</sup>Genotyped/Imputed marker. <sup>†</sup>Lead SNP.

**Association with breast cancer subtypes.** Based on data from European studies, 66 genotyped SNPs and 72 imputed SNPs were associated with risk of ER+ breast cancer ( $P$  values  $10^{-7}$  to  $10^{-14}$ ). The most strongly associated SNP for overall breast cancer (rs2787486) was also the most strongly associated for ER+ disease (OR = 0.91 (0.88–0.93),  $P = 1.39 \times 10^{-14}$ ), but was more weakly associated with ER- disease (OR = 0.95 (0.91–0.99),  $P = 1.77 \times 10^{-02}$ ,  $P_{\text{heterogeneity}} = 0.017$ ). The most strongly associated SNP for ER- disease was c17\_pos53079506 (OR = 1.19 (1.07–1.33),  $P = 0.0017$ ,  $P_{\text{heterogeneity}} = 0.015$ ) located ~130 kb from rs2787486.

To determine whether there were additional subtype-specific association signals, we included all SNPs displaying evidence for association with ER+ disease (345 SNPs,  $P < 10^{-4}$  and MAF  $\geq 2\%$ ) in a separate forward stepwise regression model. The top associated SNP was rs2787486 (OR = 0.91 (0.88–0.93),  $P = 1.39 \times 10^{-14}$ ) - the same SNP best-associated with overall risk and the same signal was localized by the HyperLasso search with penalty term set to 424. We calculated the likelihood ratio of each ER+ associated SNP ( $r^2 > 0.6$ ) relative to rs2787486 and retained a list of 37 markers (17 genotyped, 20 imputed) with a likelihood ratio of  $> 1:100$ . This list included all 28 candidate causal SNPs for overall risk, except for imputed variant rs187242. No stepwise selection for ER-risk was performed as none of the markers fulfilled the inclusion criteria.

**Overall breast cancer and subtype risk association in Asian studies.** Among Asian studies, the strongest association with overall breast cancer risk was observed for genotyped SNP rs244353 (OR = 0.91 (0.85–0.93),  $P = 2.57 \times 10^{-3}$ ). This SNP was one of the candidate causal SNPs in Europeans, and conferred a similar OR in both populations (Supplementary Table 3). Of the genotyped markers 299 (among Europeans) and 38 (among Asians) exhibit a marginal P-value  $\leq 0.05$ ; of which 27 were significant in both populations and 9 (Supplementary Table 4) were selected as potential candidates by relative likelihood filtering in the European population. No evidence of heterogeneity in tumour subtype OR was observed for this SNP. The strongest association with ER+

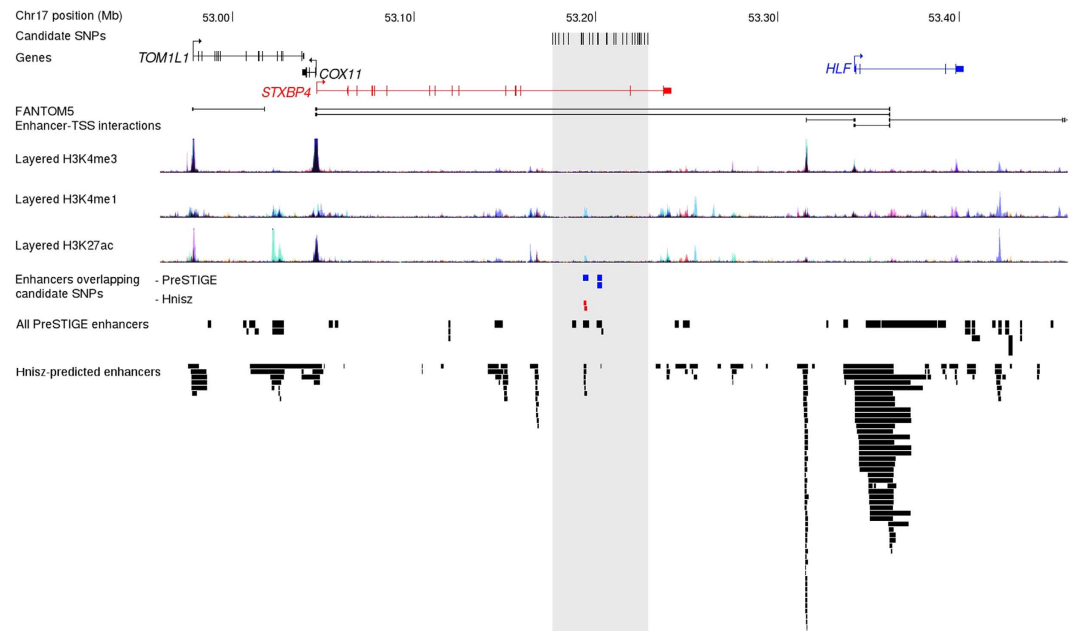


**Figure 2. In silico analysis of the 17q22 locus. (A)** Functional annotations using data from the ENCODE project. From top to bottom, epigenetic signals evaluated included DNase clusters, and ENCODE chromatin states (ChromHMM) and histone modifications in HMEC and MCF7 cell lines. The detailed colour scheme in chromatin states is described in the UCSC browser. All tracks were generated by the UCSC genome browser (hg 19). **(B)** Long-range chromatin interactions. From top to bottom, ChIA-PET data for Pol2 and CTCF in MCF7 cell lines. The ChIA-PET raw data available on GEO under the following accession (GSE63525.K56, GSE33664, GSE39495) were processed with the GenomicRanges package. -RNAseq data from MCF7 and HMEC cell lines. The value of the RNAseq analysis corresponds to the mean RPM value for *COX11*, *TOM1L1* and *STXBP4* from 4 HMEC and 19 MCF7 datasets, respectively. The annotation has been obtained through the Bioconductor annotation package TxDb.Hsapiens.UCSC.hg19.knownGene. The tracks have been generated using ggplot2 and ggbio library in R.

disease was with SNP rs7503456 (OR = 0.89 (0.84–0.95),  $P = 2.73 \times 10^{-4}$ ), which showed no association in the European studies (OR = 1.00 (0.97–1.03),  $P = 0.775$ ). For ER- disease the strongest association was found with c17\_pos52831447 (OR = 1.91 (1.25–2.92),  $P = 3.8 \times 10^{-3}$ ), which showed no association among the European studies (OR = 1.04 (0.98–1.09),  $P = 0.181$ ).

**Analyses of overlap between candidate causal variants and regulatory sites.** The 28 candidate causal variants (Table 1, Supplementary Table 5) fall in a 53.2 kb region spanning two introns of *STXBP4* (Fig. 1). We mapped these to regulatory annotations from ENCODE. Analysis of DNase hypersensitivity clusters indicates that SNP rs244353 overlaps with a DHS in 23 cell lines, while rs2787481 and rs244317 show overlap in one and





**Figure 3. Functional annotation of the 17q22 locus.** Positions of candidate causal variants are shown as black tick marks in relation to local genes. Epigenomic marks associated with enhancers are shown as described by FANTOM, ENCODE, PreSTIGE and Hnisz *et al.*<sup>18</sup>. Enhancers which overlap candidate SNPs are coded in color to match their predicted target gene. The grey shaded region area depicts the region bound by un-excluded variants.

three cell lines, respectively. However, none of these overlaps were observed in mammary cells. None of the candidate causal SNPs overlapped with histone modification marks (H3K4me1, H3K4me3, H3K9ac, H3K27ac) in the mammary cells line HMEC and MCF7 breast cancer cells (Fig. 2A). We analysed enhancer-promoter interactions using Chromatin Interaction Analysis by Paired End Tag (ChiA-PET) data for CCCTC-binding factor (CTCF) and DNA polymerase II (Pol2) in MCF7 breast tumour derived cells. Although multiple chromosomal interactions were observed across the locus for both Pol2 and CTCF in MCF7 cells there was a notable dearth of such interactions in the region encompassing the strongest candidate causal variants (Fig. 2B). No interactions were observed in Hi-C data from HMEC cells in this region (data not shown).

Data from Hnisz *et al.*<sup>18</sup> indicates the existence of several enhancers across the region, including a small one predicted to target the *STXBP4* gene (observed in both HUVEC and CD4 memory cells) that includes the candidate causal variant SNP rs244353 (Fig. 3). However, PreSTIGE<sup>17</sup> indicates that an overlapping enhancer element (also containing rs244353) active in HepG2 cells may target the *HLF* gene. Another PreSTIGE element containing rs244336 and rs244337 is predicted to target *HLF* in colon crypt cells (Fig. 3).

**Local Gene Expression analyses.** ENCODE RNA-seq data show that *COX11* and *TOM1L1* are highly expressed in both MCF7 and HMEC cells lines while *STXBP4* shows much lower expression levels (Fig. 2B). We performed allele specific expression (ASE) analysis using RNAseq and SNP array genotype data from TCGA<sup>19</sup>. Allelic imbalance at marginal statistical significance ( $P = 0.032$ ) in *COX11* expression was detected with the alleles of candidate causal SNP rs2787481 ( $r^2 = 0.90$  with rs2787486 ~1.3 Kb away) but not with any other genes within 1 Mb (*TOM1L1*, *STXBP4*, *HLF*, *MMD*, *PCTP*) using the same SNP (Supplementary Figure 3, Supplementary Table 6).

We also examined the associations of SNPs with the expression levels of the same local genes. In the normal tissue samples ( $n = 135$ ) from the METABRIC study the top breast cancer candidate causal variant was also associated with *COX11* expression levels (Supplementary Table 7). The most significant breast cancer associated SNP, rs2787486, was associated with differential expression of *COX11* ( $P = 0.00019$ , FDR corrected  $P = 0.05$ ) but not significantly associated with expression of any other genes after FDR correction. However, other SNPs across this region were more significantly associated with *COX11* expression (strongest association with SNP rs138326143,  $P = 1.4 \times 10^{-7}$ , FDR corrected  $P = 0.003$ ,<sup>31</sup>) suggesting that the observed change in *COX11* expression in normal breast tissue is unlikely to be the main driver of breast cancer risk. By contrast, no associations with *COX11* expression were observed in the TCGA breast tumour samples with the top breast cancer risk SNPs (Supplementary Figure 5). However, in TCGA multiple SNPs associate with expression of the shortest isoform of *STXBP4* (uc010dcc) with the top breast cancer risk SNP, rs2787486 having a FDR corrected  $P = 4.0 \times 10^{-8}$  ( $r^2 = 0.06$ , Supplementary Figure 4). Other SNPs, including rs244317 and rs11658717 displayed more significant associations with expression of this isoform (FDR corrected  $P = 3.8 \times 10^{-9}$ ,  $r^2 = 0.07$ , Supplementary Figure 4) than the top breast cancer risk SNP. The minor alleles are associated with increased expression of isoform uc010dcc, and explain 7% of the variation in its expression levels. Of note Caswell *et al.*<sup>30</sup> reported that the A-G base change of SNP rs11658717 mediates the use of different splice junction between exons 5 and 6 of the *STXBP4* gene and thus generates the shorter uc010dcc isoform. Our expression data thus support this report but our

association evidence (likelihood ratio 1:3875 relative to lead SNP rs2787486) indicates that this SNP is unlikely to be a causal variant driving breast cancer risk.

We also interrogated candidate variants in the v6 data release from the Gene-Tissue Expression (GTEx) project<sup>32</sup>. We found a significant association between the minor allele of SNP rs244353 and decreased expression of their measured *STXBP4* (full length) isoform in multiple tissues including breast ( $n = 183$ ;  $P = 1.3 \times 10^{-6}$ ; Supplementary Figure 6, Supplementary Table 8). These different METABRIC, TCGA and GTEx findings appear contradictory of each other: SNPs rs244353 and rs244317 are highly correlated ( $r^2 = 0.90$  and yet their minor alleles are significantly associated with decreased *STXBP4* expression in GTEx but increased expression of isoform (uc010dcc) in TCGA. One possible explanation is that the *STXBP4* full length transcript (measured in GTEx) and the short transcript (uc010dcc, measured in TCGA) are regulated by different mechanisms<sup>33</sup>.

## Discussion

In this study, using more than 100,000 cases and controls of European and Asian ancestry participating in BCAC, we have confirmed previous reports of associations of SNPs in the 17q22 region with risk of breast cancer<sup>3,4</sup>. Moreover, we identified a set of 28 strong candidate causal variants, of which one or more is the likely driver of these reported associations. Of these, SNP rs2787486, which is correlated with previously reported candidates: rs6504950 ( $r^2 = 0.73$ ), rs1156287 ( $r^2 = 0.83$ ) and rs11658717 ( $r^2 = 0.84$ )<sup>5,30</sup>; was the most strongly associated variant with overall risk (OR = 0.92 (95% CI: 0.90–0.94),  $P = 8.96 \times 10^{-15}$ ). A similar magnitude of association was observed in both European and Asian women, consistent with the same causal variant mediating risk in both populations. The association was stronger for ER+ than ER– breast cancer.

All the remaining candidate causal variants lie in a 53 Kb region (positions 52,176,211 to 53,228,543) spanning two introns of the *STXBP4* gene. None are predicted to alter the coding sequence of this gene and so it is most likely that the association is mediated through altering the regulation of one or more nearby genes. CHIA-Pet studies in the breast cancer MCF7 cell line reveal many chromatin interactions across the wider region (Fig. 2); however, there is a dearth of such interactions in the region encompassing the strongest candidate causal variants. Furthermore, in MCF7 or HMEC mammary cell lines there was no evidence of histone modification or open chromatin, indicative of the existence of regulatory regions, overlapping the best candidate causal variants, although such regions do exist in the wider region studied (Fig. 3). In this respect, this association signal differs from other breast cancer association signals in which strong evidence of regulatory elements in mammary cell lines has been observed<sup>34</sup>. An enhancer is predicted by FANTOM in many cell types while data from Hnisz *et al.*<sup>18</sup> (Fig. 3) indicates the existence of a small enhancer region, targeting *STXBP4* (observed in both HUVEC and CD4 memory cells) that overlaps with candidate causal variant rs244353. However, PreSTIGE data indicate that nearby enhancer elements may target *HLF* in HepG2 and colonic crypt cells (Fig. 3).

Of the candidate genes in the region, both *COX11* and *TOM1L1* are highly expressed in both the HMEC and MCF7 breast cancer cell lines, while *STXBP4* shows much lower expression (detected by RNAseq in TCGA). In support of *COX11* and *TOM1L1* being the targets of this breast cancer susceptibility locus, eQTL analyses in normal breast tissue showed borderline significant associations of the risk alleles of top candidate causal SNP rs2787486 with increased expression levels of both *TOM1L1* and *COX11*; candidate SNP rs2787481 also showed evidence of allelic imbalance in *COX11* expression. *COX11* encodes a cytochrome c oxidase copper chaperone – a nuclear-encoded protein component of a mitochondrial-membrane-embedded respiratory complex and *TOM1L1* encodes a Target of myb1-like1 membrane trafficking protein<sup>35</sup>. Both genes are expressed in the majority of tissues examined in the Human Protein Atlas<sup>32</sup>. eQTL analysis in breast tumour tissues in TCGA find the risk allele of top candidate breast cancer risk SNP, rs2787486, to be significantly associated with increased *STXBP4* expression, but not with *COX11* (Supplementary Figures 4 and 5).

Furthermore, Hnisz *et al.*<sup>18</sup> indicates the presence of an enhancer element that overlaps with candidate causal SNP rs244353 and potentially targets *STXBP4* (observed in both HUVEC and CD4 memory cells). Consistent with this, TCGA eQTL studies in breast tumour tissues find the risk allele of top candidate breast cancer risk SNP, rs2787486, to be significantly associated with increased *STXBP4* mRNA expression. The *STXBP4* gene encodes Syntaxin binding protein 4, a scaffold protein, which has been shown to stabilise and prevent degradation of an isoform of p63<sup>36</sup>. P63 is, in turn, a member of the p53 tumour suppressor protein family and thus possibly a biologically more plausible candidate cancer gene than *COX11* or *TOM1L1*.

We conclude that one or more of the 28 variants we identified is causally related to breast cancer risk, most likely through regulation of *STXBP4*, *COX11* and *TOM1L1*, with the balance of the evidence favouring *STXBP4* as the most important target. It remains possible, however, that the target gene(s) is more distant (>1 Mb) from the associated variants and so have not yet been considered. Further functional analyses will be required to determine the mechanism underlying this association and the downstream targets.

## References

1. Ferlay, J. *et al.* Estimates of worldwide burden of cancer in 2008: GLOBOCAN 2008. *Int J Cancer* **127**, 2893–2917, doi: 10.1002/ijc.25516 (2010).
2. Ferlay, J. *et al.* Cancer incidence and mortality worldwide: Sources, methods and major patterns in GLOBOCAN 2012. *Int J Cancer* **136**, E359–386, doi: 10.1002/ijc.29210 (2015).
3. Ahmed, S. *et al.* Newly discovered breast cancer susceptibility loci on 3p24 and 17q23.2. *Nat Genet* **41**, 585–590, doi: 10.1038/ng.354 (2009).
4. Turnbull, C. *et al.* Genome-wide association study identifies five new breast cancer susceptibility loci. *Nat Genet* **42**, 504–507, doi: 10.1038/ng.586 (2010).
5. Campa, D. *et al.* Interactions between genetic variants and breast cancer risk factors in the breast and prostate cancer cohort consortium. *J Natl Cancer Inst* **103**, 1252–1263, doi: 10.1093/jnci/djr265 (2011).
6. Broeks, A. *et al.* Low penetrance breast cancer susceptibility loci are associated with specific breast tumor subtypes: findings from the Breast Cancer Association Consortium. *Hum Mol Genet* **20**, 3289–3303, doi: 10.1093/hmg/ddr228 (2011).

7. Tang, L. *et al.* Association of STXBP4/COX11 rs6504950 (G > A) polymorphism with breast cancer risk: evidence from 17,960 cases and 22,713 controls. *Arch Med Res* **43**, 383–388, doi: 10.1016/j.arcmed.2012.07.008 (2012).
8. Michailidou, K. *et al.* Large-scale genotyping identifies 41 new loci associated with breast cancer risk. *Nat Genet* **45**, 353–361, 361e351–352, doi: 10.1038/ng.2563 (2013).
9. Howie, B. N., Donnelly, P. & Marchini, J. A flexible and accurate genotype imputation method for the next generation of genome-wide association studies. *PLoS genetics* **5**, e1000529, doi: 10.1371/journal.pgen.1000529 (2009).
10. Howie, B., Marchini, J. & Stephens, M. Genotype imputation with thousands of genomes. *G3* **1**, 457–470, doi: 10.1534/g3.111.001198 (2011).
11. Team, R. C. R: *A Language and Environment for Statistical Computing*, <https://www.R-project.org/> (2016).
12. French, J. D. *et al.* Functional variants at the 11q13 risk locus for breast cancer regulate cyclin D1 expression through long-range enhancers. *American journal of human genetics* **92**, 489–503, doi: 10.1016/j.ajhg.2013.01.002 (2013).
13. Hoggart, C. J., Whittaker, J. C., De Iorio, M. & Balding, D. J. Simultaneous analysis of all SNPs in genome-wide and re-sequencing association studies. *PLoS genetics* **4**, e1000130, doi: 10.1371/journal.pgen.1000130 (2008).
14. Consortium, E. P. A user's guide to the encyclopedia of DNA elements (ENCODE). *PLoS Biol* **9**, e1001046, doi: 10.1371/journal.pbio.1001046 (2011).
15. Rao, S. S. *et al.* A 3D map of the human genome at kilobase resolution reveals principles of chromatin looping. *Cell* **159**, 1665–1680, doi: 10.1016/j.cell.2014.11.021 (2014).
16. Roadmap Epigenomics, C. *et al.* Integrative analysis of 111 reference human epigenomes. *Nature* **518**, 317–330, doi: 10.1038/nature14248 (2015).
17. Corradin, O. *et al.* Combinatorial effects of multiple enhancer variants in linkage disequilibrium dictate levels of gene expression to confer susceptibility to common traits. *Genome Res* **24**, 1–13, doi: 10.1101/gr.164079.113 (2014).
18. Hnisz, D. *et al.* Super-enhancers in the control of cell identity and disease. *Cell* **155**, 934–947, doi: 10.1016/j.cell.2013.09.053 (2013).
19. Li, Q. *et al.* Integrative eQTL-based analyses reveal the biology of breast cancer risk loci. *Cell* **152**, 633–641, doi: 10.1016/j.cell.2012.12.034 (2013).
20. Curtis, C. *et al.* The genomic and transcriptomic architecture of 2,000 breast tumours reveals novel subgroups. *Nature* **486**, 346–352, doi: 10.1038/nature10983 (2012).
21. Guo, Q. *et al.* Identification of novel genetic markers of breast cancer survival. *J Natl Cancer Inst* **107**, doi: 10.1093/jnci/djv081 (2015).
22. Shabalin, A. A. Matrix eQTL: ultra fast eQTL analysis via large matrix operations. *Bioinformatics* **28**, 1353–1358, doi: 10.1093/bioinformatics/bts163 (2012).
23. Haakensen, V. D. *et al.* Gene expression profiles of breast biopsies from healthy women identify a group with claudin-low features. *BMC Med Genomics* **4**, 77, doi: 10.1186/1755-8794-4-77 (2011).
24. Cancer Genome Atlas, N. Comprehensive molecular portraits of human breast tumours. *Nature* **490**, 61–70, doi: 10.1038/nature11412 (2012).
25. Li, B., Ruotti, V., Stewart, R. M., Thomson, J. A. & Dewey, C. N. RNA-Seq gene expression estimation with read mapping uncertainty. *Bioinformatics* **26**, 493–500, doi: 10.1093/bioinformatics/btp692 (2010).
26. Sun, W. R Package eMAP (<http://www.bios.unc.edu/~weisun/software.htm>) (2010).
27. Consortium, G. T. The Genotype-Tissue Expression (GTEx) project. *Nat Genet* **45**, 580–585, doi: 10.1038/ng.2653 (2013).
28. Lin, W. Y. *et al.* Identification and characterization of novel associations in the CASP8/ALS2CR12 region on chromosome 2 with breast cancer risk. *Hum Mol Genet* **24**, 285–298, doi: 10.1093/hmg/ddu431 (2015).
29. Spencer, A. V., Cox, A. & Walters, K. Comparing the efficacy of SNP filtering methods for identifying a single causal SNP in a known association region. *Annals of human genetics* **78**, 50–61, doi: 10.1111/ahg.12043 (2014).
30. Caswell, J. L. *et al.* Multiple breast cancer risk variants are associated with differential transcript isoform expression in tumors. *Hum Mol Genet* **24**, 7421–7431, doi: 10.1093/hmg/ddv432 (2015).
31. Machiela, M. J. & Chanock, S. J. LDlink: a web-based application for exploring population-specific haplotype structure and linking correlated alleles of possible functional variants. *Bioinformatics* **31**, 3555–3557, doi: 10.1093/bioinformatics/btv402 (2015).
32. Mele, M. *et al.* Human genomics. The human transcriptome across tissues and individuals. *Science* **348**, 660–665, doi: 10.1126/science.aaa0355 (2015).
33. Kent, W. J. *et al.* The human genome browser at UCSC. *Genome Res* **12**, 996–1006, doi: 10.1101/gr.229102. Article published online before print in May 2002 (2002).
34. Darabi, H. *et al.* Polymorphisms in a Putative Enhancer at the 10q21.2 Breast Cancer Risk Locus Regulate NRBF2 Expression. *American journal of human genetics* **97**, 22–34, doi: 10.1016/j.ajhg.2015.05.002 (2015).
35. Chevalier, C. *et al.* TOM1L1 drives membrane delivery of MT1-MMP to promote ERBB2-induced breast cancer cell invasion. *Nat Commun* **7**, 10765, doi: 10.1038/ncomms10765 (2016).
36. Li, Y., Peart, M. J. & Prives, C. Stxbp4 regulates DeltaNp63 stability by suppression of RACK1-dependent degradation. *Mol Cell Biol* **29**, 3953–3963, doi: 10.1128/MCB.00449-09 (2009).

## Acknowledgements

The authors thank all the individuals who took part in these studies and all the researchers, study staff, clinicians, and other healthcare providers, technicians, and administrative staff who have enabled this work to be carried out. In particular, they thank: **COGS**: Andrew Berchuck (OCAC), Rosalind A. Eeles, Ali Amin Al Olama, Zsofia Kote-Jarai, Sara Benlloch (PRACTICAL), Antonis Antoniou, Lesley McGuffog and Ken Offit (CIMBA), Joe Dennis, Andrew Lee, and Ed Dicks, Craig Luccarini and the staff of the Centre for Genetic Epidemiology Laboratory and the staff of the CNIO genotyping unit, Francois Bacot, Sylvie LaBoissière and Frederic Robidoux and the staff of the McGill University and Genome Quebec Innovation Centre, Sune F. Nielsen, Borge G. Nordestgaard, and the staff of the Copenhagen DNA laboratory, and Julie M. Cunningham, Sharon A. Windebank, Christopher A. Hilker, Jeffrey Meyer and the staff of Mayo Clinic Genotyping Core Facility; **ABCFS**: Maggie Angelakos, Judi Maskiell, Gillian Dite; **ABCS**: Sten Cornelissen, Richard van Hien, Linde Braaf, Frans Hogervorst, Senno Verhoef, Laura van 't Veer, Emiel Rutgers, C Ellen van der Schoot, Femke Atsma; **ACP**: The ACP study wishes to thank the participants in the Thai Breast Cancer study. Special Thanks also go to the Thai Ministry of Public Health (MOPH), doctors and nurses who helped with the data collection process. Finally, the study would like to thank Dr Prat Boonyawongviroj, the former Permanent Secretary of MOPH and Dr Pornthep Siriwanarungsan, the Department Director-General of Disease Control who have supported the study throughout; **BBCS**: Eileen Williams, Elaine Ryder-Mills, Kara Sargus; **BIGGS**: Niall McInerney, Gabrielle Colleran, Andrew Rowan, Angela Jones; **BSUCH**: Peter Bugert, Medical Faculty Mannheim; **CGPS**: Staff and participants of the Copenhagen General Population Study. For the excellent technical assistance: Dorthe Uldall Andersen, Maria Birna Arnadottir, Anne Bank, Dorthe Kjeldgård Hansen. The Danish Cancer Biobank is acknowledged for providing infrastructure for the collection of blood samples for the cases; **CNIO-BCS**: Charo Alonso, Daniel

Herrero, Nuria Álvarez, Pilar Zamora, Primitiva Menendez, the Human Genotyping-CEGEN Unit (CNIO); **CTS**: The CTS Steering Committee includes Leslie Bernstein, James Lacey, Sophia Wang, Huiyan Ma, Yani Lu, and Jessica Clague DeHart at the Beckman Research Institute of City of Hope, Dennis Deapen, Rich Pinder, Eunjung Lee, and Fred Schumacher at the University of Southern California, Pam Horn-Ross, Peggy Reynolds, Christina Clarke Dur and David Nelson at the Cancer Prevention Institute of California, Argyrios Ziogas and Hannah Park at the University of California Irvine; **ESTHER**: Hartwig Ziegler, Sonja Wolf, Volker Hermann, Christa Stegmaier, Katja Butterbach; **GC-HBOC**: Stefanie Engert, Heide Hellebrand, Sandra Kröber; **GENICA**: The GENICA Network: Dr. Margarete Fischer-Bosch-Institute of Clinical Pharmacology, Stuttgart, and University of Tübingen, Germany [HB, Wing-Yee Lo, Christina Justenhoven], German Cancer Consortium (DKTK) and German Cancer Research Center (DKFZ) [HB], Department of Internal Medicine, Evangelische Kliniken Bonn gGmbH, Johanniter Krankenhaus, Bonn, Germany [Yon-Dschun Ko, Christian Baisch], Institute of Pathology, University of Bonn, Germany [Hans-Peter Fischer], Molecular Genetics of Breast Cancer, Deutsches Krebsforschungszentrum (DKFZ), Heidelberg, Germany, Institute for Prevention and Occupational Medicine of the German Social Accident Insurance, Institute of the Ruhr University Bochum (IPA), Bochum, Germany [TB, Beate Pesch, Sylvia Rabstein, Anne Lotz]; and Institute of Occupational Medicine and Maritime Medicine, University Medical Center Hamburg-Eppendorf, Germany [Volker Harth]; **HEBCS**: Kirsimari Aaltonen, Karl von Smitten, Tuomas Heikkinen, Irja Erkkilä; **HMBCS**: Peter Hillemanns, Hans Christiansen and Johann H. Karstens; **KBCP**: Eija Myöhänen, Helena Kemiläinen; **kConFab/AOCS**: We wish to thank Heather Thorne, Eveline Niedermayr, all the kConFab research nurses and staff, the heads and staff of the Family Cancer Clinics, and the Clinical Follow Up Study (which has received funding from the NHMRC, the National Breast Cancer Foundation, Cancer Australia, and the National Institute of Health (USA)) for their contributions to this resource, and the many families who contribute to kConFab; **LAABC**: We thank all the study participants and the entire data collection team, especially Annie Fung and June Yashiki; **LMBC**: Gilian Peuteman, Dominiek Smeets, Thomas Van Brussel and Kathleen Corthouts; **MARIE**: Petra Seibold, Dieter Flesch-Janys, Judith Heinz, Nadia Obi, Alina Vrieling, Sabine Behrens, Ursula Eilber, Muhabbet Celik, Til Olchers and Stefan Nickels; **MBCSG**: Bernard Peissel and Jacopo Azzollini Daniela Zaffaroni of the Fondazione IRCCS Istituto Nazionale dei Tumori (INT); Bernardo Bonanni, Monica Barile and Irene Feroce of the Istituto Europeo di Oncologia (IEO) and the personnel of the Cogentech Cancer Genetic Test Laboratory; **MTLGEBCS**: We would like to thank Martine Tranchant (CHU de Québec Research Center), Marie-France Valois, Annie Turgeon and Lea Heguy (McGill University Health Center, Royal Victoria Hospital; McGill University) for DNA extraction, sample management and skillful technical assistance. J.S. is Chairholder of the Canada Research Chair in Oncogenetics; **MYBRCA**: Phuah Sze Yee, Peter Kang, Kang In Nee, Kavitta Sivanandan, Shivaani Mariapun, Yoon Sook-Yee, Daphne Lee, Teh Yew Ching and Nur Aishah Mohd Taib for DNA Extraction and patient recruitment; **NBCS**: The following are NBCS Collaborators: Dr. Kristine K.Sahlberg, PhD (Department of Research, Vestre Viken Hospital, Drammen, Norway and Department of Cancer Genetics, Institute for Cancer Research, Oslo University Hospital-Radiumhospitalet, Oslo, Norway), Dr. Lars Ottestad, MD (Department of Cancer Genetics, Institute for Cancer Research, Oslo University Hospital-Radiumhospitalet, Oslo, Norway), Prof. Em. Rolf Kåresen, MD (Institute of Clinical Medicine, University of Oslo, Oslo, Norway and Department of Breast- and Endocrine Surgery, Division of Surgery, Cancer and Transplantation, Oslo University Hospital, Oslo, Norway), Dr. Anita Langerød, PhD (Department of Cancer Genetics, Institute for Cancer Research, Oslo University Hospital-Radiumhospitalet, Oslo, Norway), Dr. Ellen Schlichting, MD (Section for Breast- and Endocrine Surgery, Department of Cancer, Division of Surgery, Cancer and Transplantation Medicine, Oslo University Hospital, Oslo, Norway), Dr. Marit Muri Holmen, MD (Department of Radiology and Nuclear Medicine, Oslo University Hospital, Oslo, Norway), Prof. Toril Sauer, MD (Department of Pathology at Akershus University hospital, Lørenskog, Norway and Institute of Clinical Medicine, Faculty of Medicine, University of Oslo, Oslo, Norway), Dr. Vilde Haakensen, MD (Department of Cancer Genetics, Institute for Cancer Research, Oslo University Hospital-Radiumhospitalet, Oslo, Norway), Dr. Olav Engebråten, MD (Department of Tumor Biology, Institute for Cancer Research, Oslo University Hospital, Oslo, Norway, Department of Oncology, Division of Surgery and Cancer and Transplantation Medicine, Oslo University Hospital, Oslo, Norway and Institute for Clinical Medicine, Faculty of Medicine, University of Oslo, Oslo, Norway), Prof. Bjørn Naume, MD (Department of Oncology, Division of Surgery and Cancer and Transplantation Medicine, Oslo University Hospital-Radiumhospitalet, Oslo, Norway and K.G. Jebsen Centre for Breast Cancer, Institute for Clinical Medicine, University of Oslo, Oslo, Norway.), Dr. Cecile E. Kiserud, MD (National Advisory Unit on Late Effects after Cancer Treatment, Department of Oncology, Oslo University Hospital, Oslo, Norway and Department of Oncology, Oslo University Hospital, Oslo, Norway), Dr. Kristin V. Reinertsen, MD (National Advisory Unit on Late Effects after Cancer Treatment, Department of Oncology, Oslo University Hospital, Oslo, Norway and Department of Oncology, Oslo University Hospital, Oslo, Norway), Assoc. Prof. Åslaug Helland, MD (Department of Genetics, Institute for Cancer Research and Department of Oncology, Oslo University Hospital Radiumhospitalet, Oslo, Norway), Dr. Margit Riis, MD (Dept of Breast- and Endocrine Surgery, Oslo University Hospital, Ullevål, Oslo, Norway), Dr. Ida Bukholm, MD (Department of Breast-Endocrine Surgery, Akershus University Hospital, Oslo, Norway and Department of Oncology, Division of Cancer Medicine, Surgery and Transplantation, Oslo University Hospital, Oslo, Norway), Prof. Per Eystein Lønning, MD (Section of Oncology, Institute of Medicine, University of Bergen and Department of Oncology, Haukeland University Hospital, Bergen, Norway), OSBREAC (Oslo Breast Cancer Research Consortium), Prof. Anne-Lise Børresen-Dale, PhD (Department of Cancer Genetics, Institute for Cancer Research, Oslo University Hospital-Radiumhospitalet, Oslo, Norway and Institute of Clinical Medicine, Faculty of Medicine, University of Oslo, Norway) and Grethe I. Grenaker Alnæs, M.Sc. (Department of Cancer Genetics, Institute for Cancer Research, Oslo University Hospital-Radiumhospitalet, Oslo, Norway); **NBHS**: We thank study participants and research staff for their contributions and commitment to this study; **OBCS**: We thank Arja Jukkola-Vuorinen, Mervi Grip, Saila Kauppila, Meeri Otsukka and Kari Mononen for their contributions to this study; **OFBCR**:

Teresa Selander, Nayana Weerasooriya; **ORIGO**: We thank E. Krol-Warmerdam, and J. Blom for patient accrual, administering questionnaires, and managing clinical information. The LUMC survival data were retrieved from the Leiden hospital-based cancer registry system (ONCDOC) with the help of Dr. J. Molenaar; **PBCS**: Louise Brinton, Mark Sherman, Neonila Szeszenia-Dabrowska, Beata Peplonska, Witold Zatonski, Pei Chao, Michael Stagner; **pKARMA**: The Swedish Medical Research Counsel; **RBCS**: Petra Bos, Jannet Blom, Ellen Crepin, Elisabeth Huijskens, Annette Heemskerck, the Erasmus MC Family Cancer Clinic; **SASBAC**: The Swedish Medical Research Counsel; **SBCGS**: We thank study participants and research staff for their contributions and commitment to this study; **SBCS**: Sue Higham, Helen Cramp, Ian Brock, Sabapathy Balasubramanian and Dan Connley; **SEARCH**: The SEARCH and EPIC teams; **SGBCC**: We thank the participants and research coordinator Kimberley Chua; **SKKDKFZS**: We thank all study participants, clinicians, family doctors, researchers and technicians for their contributions and commitment to this study; **TNBCC**: Robert Pilarski and Charles Shapiro were instrumental in the formation of the OSU Breast Cancer Tissue Bank. We thank the Human Genetics Sample Bank for processing of samples and providing OSU Columbus area control samples. **UKBGS**: We thank Breast Cancer Now and the Institute of Cancer Research for support and funding of the Breakthrough Generations Study, and the study participants, study staff, and the doctors, nurses and other health care providers and health information sources who have contributed to the study. We acknowledge NHS funding to the Royal Marsden/ICR NIHR Biomedical Research Centre. The authors would also like to acknowledge Dr Katherine A. Hoadley for normalization and sharing of all of TCGA BRCA RNAseq gene expression data. The work conducted for this project is supported by **BCAC**: BCAC is funded by Cancer Research UK [C1287/A10118, C1287/A12014] and by the European Community's Seventh Framework Programme under grant agreement number 223175 (grant number HEALTH-F2-2009-223175); **COGS**: Funding for the iCOGS infrastructure came from: the European Community's Seventh Framework Programme under grant agreement n° 223175 (HEALTH-F2-2009-223175) (COGS), Cancer Research UK (C1287/A10118, C1287/A 10710, C12292/A11174, C1281/A12014, C5047/A8384, C5047/A15007, C5047/A10692, C8197/A16565), the National Institutes of Health (CA128978) and Post-Cancer GWAS initiative (1U19 CA148537, 1U19 CA148065 and 1U19 CA148112 - the GAME-ON initiative), the Department of Defence (W81XWH-10-1-0341), the Canadian Institutes of Health Research (CIHR) for the CIHR Team in Familial Risks of Breast Cancer, Komen Foundation for the Cure, the Breast Cancer Research Foundation, and the Ovarian Cancer Research Fund; **ABCFS**: The Australian Breast Cancer Family Study (ABCFS) was supported by grant UM1 CA164920 from the National Cancer Institute (USA). The content of this manuscript does not necessarily reflect the views or policies of the National Cancer Institute or any of the collaborating centers in the Breast Cancer Family Registry (BCFR), nor does mention of trade names, commercial products, or organizations imply endorsement by the USA Government or the BCFR. The ABCFS was also supported by the National Health and Medical Research Council of Australia, the New South Wales Cancer Council, the Victorian Health Promotion Foundation (Australia) and the Victorian Breast Cancer Research Consortium. J.L.H. is a National Health and Medical Research Council (NHMRC) Senior Principal Research Fellow. M.C.S. is a NHMRC Senior Research Fellow; **ABCS**: The ABCS study was supported by the Dutch Cancer Society [grants NKI 2007-3839; 2009 4363]; **BBMRI-NL**, which is a Research Infrastructure financed by the Dutch government (NWO 184.021.007); and the Dutch National Genomics Initiative; **ACP**: The ACP study is funded by the Breast Cancer Research Trust, UK; **BBCC**: The work of the BBCC was partly funded by ELAN-Fond of the University Hospital of Erlangen; **BBCS**: The BBCS is funded by Cancer Research UK and Breast Cancer Now and acknowledges NHS funding to the NIHR Biomedical Research Centre, and the National Cancer Research Network (NCRN); **BIGGS**: ES is supported by NIHR Comprehensive Biomedical Research Centre, Guy's & St. Thomas' NHS Foundation Trust in partnership with King's College London, United Kingdom. IT is supported by the Oxford Biomedical Research Centre; **BSUCH**: The BSUCH study was supported by the Dietmar-Hopp Foundation, the Helmholtz Society and the German Cancer Research Center (DKFZ); **CECILE**: The CECILE study was funded by Fondation de France, Institut National du Cancer (INCa), Ligue Nationale contre le Cancer, Ligue contre le Cancer Grand Ouest, Agence Nationale de Sécurité Sanitaire (ANSES), Agence Nationale de la Recherche (ANR); **CGPS**: The CGPS was supported by the Chief Physician Johan Boserup and Lise Boserup Fund, the Danish Medical Research Council and Herlev Hospital; **CNIO-BCS**: he CNIO-BCS was supported by the Instituto de Salud Carlos III, the Red Temática de Investigación Cooperativa en Cáncer and grants from the Asociación Española Contra el Cáncer and the Fondo de Investigación Sanitario (PI11/00923 and PI12/00070); **CTS**: The CTS was initially supported by the California Breast Cancer Act of 1993 and the California Breast Cancer Research Fund (contract 97-10500) and is currently funded through the National Institutes of Health (R01 CA77398). Collection of cancer incidence data was supported by the California Department of Public Health as part of the statewide cancer reporting program mandated by California Health and Safety Code Section 103885. HAC receives support from the Lon V Smith Foundation (LVS39420); **ESTHER**: The ESTHER study was supported by a grant from the Baden Württemberg Ministry of Science, Research and Arts. Additional cases were recruited in the context of the VERDI study, which was supported by a grant from the German Cancer Aid (Deutsche Krebshilfe); **GC-HBOC**: The GC-HBOC (German Consortium of Hereditary Breast and Ovarian Cancer) is supported by the German Cancer Aid (grant no 110837, coordinator: Rita K. Schmutzler); **GENICA**: The GENICA was funded by the Federal Ministry of Education and Research (BMBF) Germany grants 01KW9975/5, 01KW9976/8, 01KW9977/0 and 01KW0114, the Robert Bosch Foundation, Stuttgart, Deutsches Krebsforschungszentrum (DKFZ), Heidelberg, the Institute for Prevention and Occupational Medicine of the German Social Accident Insurance, Institute of the Ruhr University Bochum (IPA), Bochum, as well as the Department of Internal Medicine, Evangelische Kliniken Bonn gGmbH, Johanniter Krankenhaus, Bonn, Germany; **HEBCS**: The HEBCS was financially supported by the Helsinki University Central Hospital Research Fund, Academy of Finland (266528), the Finnish Cancer Society, The Nordic Cancer Union and the Sigrid Juselius Foundation; **HERPACC**: The HERPACC was supported by MEXT Kakenhi (No. 170150181 and 26253041) from the Ministry of Education, Science, Sports, Culture and Technology of Japan, by a Grant-in-Aid

for the Third Term Comprehensive 10-Year Strategy for Cancer Control from Ministry Health, Labour and Welfare of Japan, by Health and Labour Sciences Research Grants for Research on Applying Health Technology from Ministry Health, Labour and Welfare of Japan, by National Cancer Center Research and Development Fund, and "Practical Research for Innovative Cancer Control (15ck0106177h0001)" from Japan Agency for Medical Research and development, AMED, and Cancer Bio Bank Aichi; **HMBCS**: The HMBCS was supported by a grant from the Friends of Hannover Medical School and by the Rudolf Bartling Foundation; **KARBAC**: Financial support for KARBAC was provided through the regional agreement on medical training and clinical research (ALF) between Stockholm County Council and Karolinska Institutet, the Swedish Cancer Society, The Gustav V Jubilee foundation and Bert von Kantzows foundation; **KBCP**: The KBCP was financially supported by the special Government Funding (EVO) of Kuopio University Hospital grants, Cancer Fund of North Savo, the Finnish Cancer Organizations, and by the strategic funding of the University of Eastern Finland; **kConFab/AOCS**: kConFab is supported by a grant from the National Breast Cancer Foundation, and previously by the National Health and Medical Research Council (NHMRC), the Queensland Cancer Fund, the Cancer Councils of New South Wales, Victoria, Tasmania and South Australia, and the Cancer Foundation of Western Australia. Financial support for the AOCS was provided by the United States Army Medical Research and Materiel Command [DAMD17-01-1-0729], Cancer Council Victoria, Queensland Cancer Fund, Cancer Council New South Wales, Cancer Council South Australia, The Cancer Foundation of Western Australia, Cancer Council Tasmania and the National Health and Medical Research Council of Australia (NHMRC; 400413, 400281, 199600). G.C.T. and P.W. are supported by the NHMRC. RB was a Cancer Institute NSW Clinical Research Fellow; **LAABC**: LAABC is supported by grants (1RB-0287, 3PB-0102, 5PB-0018, 10PB-0098) from the California Breast Cancer Research Program. Incident breast cancer cases were collected by the USC Cancer Surveillance Program (CSP) which is supported under subcontract by the California Department of Health. The CSP is also part of the National Cancer Institute's Division of Cancer Prevention and Control Surveillance, Epidemiology, and End Results Program, under contract number N01CN25403; **LMBC**: LMBC is supported by the 'Stichting tegen Kanker' (232–2008 and 196–2010). Diether Lambrechts is supported by the FWO and the KULPFV/10/016-SymBioSysII; **MARIE**: The MARIE study was supported by the Deutsche Krebshilfe e.V. [70-2892-BR I, 106332, 108253, 108419], the Hamburg Cancer Society, the German Cancer Research Center (DKFZ) and the Federal Ministry of Education and Research (BMBF) Germany [01KH0402]; **MBCSG**: MBCSG is supported by grants from the Italian Association for Cancer Research (AIRC) and by funds from the Italian citizens who allocated the 5/1000 share of their tax payment in support of the Fondazione IRCCS Istituto Nazionale Tumori, according to Italian laws (INT-Institutional strategic projects "5 × 1000"); **MCBCS**: The MCBCS was supported by the NIH grants CA128978, CA116167, CA176785 an NIH Specialized Program of Research Excellence (SPORE) in Breast Cancer [CA116201], and the Breast Cancer Research Foundation and a generous gift from the David F. and Margaret T. Grohne Family Foundation and the Ting Tsung and Wei Fong Chao Foundation; **MCCS**: MCCS cohort recruitment was funded by VicHealth and Cancer Council Victoria. The MCCS was further supported by Australian NHMRC grants 209057, 251553 and 504711 and by infrastructure provided by Cancer Council Victoria. Cases and their vital status were ascertained through the Victorian Cancer Registry (VCR) and the Australian Institute of Health and Welfare (AIHW), including the National Death Index and the Australian Cancer Database; **MEC**: The MEC was support by NIH grants CA63464, CA54281, CA098758 and CA132839; **MTLGBCS**: The work of MTLGBCS was supported by the Quebec Breast Cancer Foundation, the Canadian Institutes of Health Research for the "CIHR Team in Familial Risks of Breast Cancer" program – grant # CRN-87521 and the Ministry of Economic Development, Innovation and Export Trade – grant # PSR-SIIRI-701; **MYBRCA**: MYBRCA is funded by research grants from the Malaysian Ministry of Science, Technology and Innovation (MOSTI), Malaysian Ministry of Higher Education (UM.C/HIR/MOHE/06) and Cancer Research Initiatives Foundation (CARIF). Additional controls were recruited by the Singapore Eye Research Institute, which was supported by a grant from the Biomedical Research Council (BMRC08/1/35/19/550), Singapore and the National medical Research Council, Singapore (NMRC/CG/SERI/2010); **NBCS**: The NBCS has received funding from the K.G. Jebsen Centre for Breast Cancer Research; the Research Council of Norway grant 193387/V50 (to A-L Børresen-Dale and V.N. Kristensen) and grant 193387/H10 (to A-L Børresen-Dale and V.N. Kristensen), South Eastern Norway Health Authority (grant 39346 to A-L Børresen-Dale) and the Norwegian Cancer Society (to A-L Børresen-Dale and V.N. Kristensen); **NBHS**: The NBHS was supported by NIH grant R01CA100374. Biological sample preparation was conducted the Survey and Biospecimen Shared Resource, which is supported by P30 CA68485; **OBCS**: The OBCS was supported by research grants from the Finnish Cancer Foundation, the Academy of Finland (grant number 250083, 122715 and Center of Excellence grant number 251314), the Finnish Cancer Foundation, the Sigrid Juselius Foundation, the University of Oulu, the University of Oulu Support Foundation and the special Governmental EVO funds for Oulu University Hospital-based research activities; **OFBCR**: The Ontario Familial Breast Cancer Registry (OFBCR) was supported by grant UM1 CA164920 from the National Cancer Institute (USA). The content of this manuscript does not necessarily reflect the views or policies of the National Cancer Institute or any of the collaborating centers in the Breast Cancer Family Registry (BCFR), nor does mention of trade names, commercial products, or organizations imply endorsement by the USA Government or the BCFR; **ORIGO**: The ORIGO study was supported by the Dutch Cancer Society (RUL 1997–1505) and the Biobanking and Biomolecular Resources Research Infrastructure (BBMRI-NL CP16); **PBCS**: The PBCS was funded by Intramural Research Funds of the National Cancer Institute, Department of Health and Human Services, USA; **pKARMA**: The pKARMA study was supported by Märit and Hans Rausing's Initiative Against Breast Cancer; **RBCS**: The RBCS was funded by the Dutch Cancer Society (DDHK 2004-3124, DDHK 2009-4318); **SASBAC**: The SASBAC study was supported by funding from the Agency for Science, Technology and Research of Singapore (A\*STAR), the US National Institute of Health (NIH) and the Susan G. Komen Breast Cancer Foundation; **SBCGS**: The SBCGS was supported primarily by NIH grants R01CA64277, R01CA148667, and R37CA70867. Biological sample preparation was conducted the Survey and

Biospecimen Shared Resource, which is supported by P30 CA68485. The scientific development and funding of this project were, in part, supported by the Genetic Associations and Mechanisms in Oncology (GAME-ON) Network U19 CA148065; **SBCS**: The SBCS was supported by Yorkshire Cancer Research S295, S299, S305PA and Sheffield Experimental Cancer Medicine Centre; **SCCS**: The SCCS is supported by a grant from the National Institutes of Health (R01 CA092447). Data on SCCS cancer cases used in this publication were provided by the Alabama Statewide Cancer Registry; Kentucky Cancer Registry, Lexington, KY; Tennessee Department of Health, Office of Cancer Surveillance; Florida Cancer Data System; North Carolina Central Cancer Registry, North Carolina Division of Public Health; Georgia Comprehensive Cancer Registry; Louisiana Tumor Registry; Mississippi Cancer Registry; South Carolina Central Cancer Registry; Virginia Department of Health, Virginia Cancer Registry; Arkansas Department of Health, Cancer Registry, 4815 W. Markham, Little Rock, AR 72205. The Arkansas Central Cancer Registry is fully funded by a grant from National Program of Cancer Registries, Centers for Disease Control and Prevention (CDC). Data on SCCS cancer cases from Mississippi were collected by the Mississippi Cancer Registry which participates in the National Program of Cancer Registries (NPCR) of the Centers for Disease Control and Prevention (CDC). The contents of this publication are solely the responsibility of the authors and do not necessarily represent the official views of the CDC or the Mississippi Cancer Registry; **SEARCH**: SEARCH is funded by a programme grant from Cancer Research UK [C490/A10124] and supported by the UK National Institute for Health Research Biomedical Research Centre at the University of Cambridge; **SEBCS**: SEBCS was supported by the BRL (Basic Research Laboratory) program through the National Research Foundation of Korea funded by the Ministry of Education, Science and Technology (2012-0000347); **SGBCC**: SGBCC is funded by the NUS start-up Grant, National University Cancer Institute Singapore (NCIS) Centre Grant and the NMRC Clinician Scientist Award. Additional controls were recruited by the Singapore Consortium of Cohort Studies-Multi-ethnic cohort (SCCS-MEC), which was funded by the Biomedical Research Council, grant number: 05/1/21/19/425; **SKKDKFZS**: SKKDKFZS is supported by the DKFZ; **SZBCS**: The SZBCS was supported by Grant PBZ\_KBN\_122/P05/2004; **TBCS**: The TBCS was funded by The National Cancer Institute Thailand; **TNBCC**: The TNBCC was supported by: a Specialized Program of Research Excellence (SPORE) in Breast Cancer (CA116201), a grant from the Breast Cancer Research Foundation, a generous gift from the David F. and Margaret T. Grohne Family Foundation, the Stefanie Spielman Breast Cancer fund and the OSU Comprehensive Cancer Center, the Hellenic Cooperative Oncology Group research grant (HR\_R\_BG/04) and the Greek General Secretary for Research and Technology (GSRT) Program, Research Excellence II, the European Union (European Social Fund – ESF), and Greek national funds through the Operational Program "Education and Lifelong Learning" of the National Strategic Reference Framework (NSRF)-ARISTEIA; **TWBCS**: The TWBCS is supported by the Taiwan Biobank project of the Institute of Biomedical Sciences, Academia Sinica, Taiwan; **UKBGS**: The UKBGS is funded by Breast Cancer Now and the Institute of Cancer Research (ICR), London. ICR acknowledges NHS funding to the NIHR Biomedical Research Centre.

### Author Contributions

Analysed the data: H.D., J. Beesley, A.D., S. Kar, S.N., M.M.M. and A.M.D. J. Beesley prepared Figure 1, 3 and Supplementary Figure 1, 2 and 6. A.D. prepared Figure 2. S.N. prepared Supplementary Figures 4 and 5. M.M.M. prepared Supplementary Figure 3. Wrote the manuscript: H.D., J. Beesley, A.D., S. Kar, S.N., M.M.M. and A.M.D. Provided critical review of the manuscript: H.D., J. Beesley, A.D., S. Kar, S.N., M.M.M., D.F.E., W.Z., S.L.E., J.D.F., G.C.T. and A.M.D. Approved the final version of the manuscript and were involved in sample and data collection for each of the involved studies together with other listed staff (see Acknowledgements): H.D., J. Beesley, A.D., S. Kar, S.N., M.M.M., P.S., K. Michailidou, M.G., H.F.W., M.K.B., Q.W., J.D., M.R.A., I.L.A., H.A.C., V.A., M.W.B., J. Benitez, N.V.B., S.E.B., H. Brauch, H. Brenner, A.B., T.B., B.B., J.C.C., J.Y.C., D.M.C., F.J.C., A.C., S.S.C., K.Z., P.D., T.D., D.F.E., P.A.F., J.F., O.F., H.F., E.G., M.G.C., G.G.G., M.S.G., A.G.N., P.G., C.A.H., E.H., U.H., M.H., A.H., J.L.H., H.I., A.J., N.J., D.K., S.Khan, V.M.K., M.K., V.K., D.L., L.L.M., S.C.L., A. Lindblom, A. Lophatananon, J.L., A. Mannermaa, S. Manoukian, S. Margolin, K. Matsuo, R.M., J.M., A. Meindl, R.L.M., K. Muir, S.L.N., H.N., C.O., N.O., P.P., G.P., K.P., A.R., S.S., E.J.S., M.K.S., R.K.S., C.S., M.S., C.Y.S., X.O.S., M.C.S., D.O.S., H.S., A.W., S.H.T., D.C.T., I.T., D.T., T.T., C.M.V., D.V., R.W., A.H.W., P.E.W., C.H.Y., W.Z., P.D.P.P., P.H., S.L.E., J.S., J.D.F., G.C.T. and A.M.D.

### Additional Information

**Supplementary information** accompanies this paper at <http://www.nature.com/srep>

**Competing financial interests:** The authors declare no competing financial interests.

**How to cite this article:** Darabi, H. *et al.* Fine scale mapping of the 17q22 breast cancer locus using dense SNPs, genotyped within the Collaborative Oncological Gene-Environment Study (COGs). *Sci. Rep.* **6**, 32512; doi: 10.1038/srep32512 (2016).



This work is licensed under a Creative Commons Attribution 4.0 International License. The images or other third party material in this article are included in the article's Creative Commons license, unless indicated otherwise in the credit line; if the material is not included under the Creative Commons license, users will need to obtain permission from the license holder to reproduce the material. To view a copy of this license, visit <http://creativecommons.org/licenses/by/4.0/>

© The Author(s) 2016