

EUR Research Information Portal

Generation of a biotinylatable Sox2 mouse model to identify Sox2 complexes in vivo

Published in:

Transgenic Research

Publication status and date:

Published: 01/01/2018

DOI (link to publisher):

[10.1007/s11248-018-0058-1](https://doi.org/10.1007/s11248-018-0058-1)

Document Version

Publisher's PDF, also known as Version of record

Citation for the published version (APA):

Schilders, K., Eenjes, E., Edel, G., Boerema - de Munck, A., Buscop - van Kempen, M., Demmers, J., Wijnen, R., Tibboel, D., & Rottier, R. (2018). Generation of a biotinylatable Sox2 mouse model to identify Sox2 complexes in vivo. *Transgenic Research*, 27(1), 75-85. <https://doi.org/10.1007/s11248-018-0058-1>

[Link to publication on the EUR Research Information Portal](#)

Terms and Conditions of Use

Except as permitted by the applicable copyright law, you may not reproduce or make this material available to any third party without the prior written permission from the copyright holder(s). Copyright law allows the following uses of this material without prior permission:

- you may download, save and print a copy of this material for your personal use only;
- you may share the EUR portal link to this material.

In case the material is published with an open access license (e.g. a Creative Commons (CC) license), other uses may be allowed. Please check the terms and conditions of the specific license.

Take-down policy

If you believe that this material infringes your copyright and/or any other intellectual property rights, you may request its removal by contacting us at the following email address: openaccess.library@eur.nl. Please provide us with all the relevant information, including the reasons why you believe any of your rights have been infringed. In case of a legitimate complaint, we will make the material inaccessible and/or remove it from the website.

Generation of a biotinylatable Sox2 mouse model to identify Sox2 complexes in vivo

Kim Schilders · Evelien Eenjes · Gabriëla Edel · Anne Boerema de Munck ·
Marjon Buscop van Kempen · Jeroen Demmers · René Wijnen ·
Dick Tibboel · Robbert J. Rottier 

Received: 6 September 2017 / Accepted: 19 January 2018
© The Author(s) 2018. This article is an open access publication

Abstract Sox2 is a Sry-box containing family member of related transcription factors sharing homology in their DNA binding domain. Sox2 is important during different stages of development, and previously we showed that Sox2 plays an important role in branching morphogenesis and epithelial cell differentiation in lung development. The transcriptional activity of Sox2 depends on its interaction with other proteins, leading to ‘complex-specific’ DNA binding and transcriptional regulation. In this study, we generated a mouse model containing a biotinylatable-tag targeted at the translational start site of the endogenous Sox2 gene (bioSox2). This tag was biotinylated by the bacterial birA protein and the resulting bioSox2 protein was used to identify associating partners of Sox2 at different phases of lung development in vivo (the Sox2 interactome).

Homozygous bioSox2 mice are viable and fertile irrespective of the biotinylation of the bio tag, indicating that the bioSox2 gene is normally expressed and the protein is functional in all tissues. This suggests that partners of Sox2 are most likely able to associate with the bioSox2 protein. BioSox2 complexes were isolated with high affinity using streptavidin beads and analysed by MALDI-ToF mass spectrometry analysis. Several of the identified binding partners are already shown to have a respiratory phenotype. Two of these partners, Wdr5 and Tcf3, were validated to confirm their association in Sox2 complexes. This bioSox2 mouse model will be a valuable tool for isolating in vivo Sox2 complexes from different tissues.

Keywords Biotinylatable tag · Sox2 · Knock-in · In vivo protein complexes

K. Schilders · E. Eenjes · G. Edel · A. B. de Munck ·
M. B. van Kempen · R. Wijnen · D. Tibboel ·
R. J. Rottier (✉)
Department of Pediatric Surgery, Erasmus Medical
Center-Sophia Children’s Hospital, Wytemaweg 80,
3015 CN Rotterdam, The Netherlands
e-mail: r.rottier@erasmusmc.nl

J. Demmers
Netherlands Proteomics Center, Erasmus Medical Center,
Rotterdam, The Netherlands

R. J. Rottier
Department of Cell Biology, Erasmus Medical Center,
Rotterdam, The Netherlands

Introduction

Sox2 is a Sry-box containing family member of related transcription factors sharing homology in their DNA binding domain. Sox2 is highly conserved across species and is involved in several developmental processes (Pevny and Placzek 2005). Sox2 expression is temporally and spatially regulated during development and starts to be expressed at the morula-stage of

development (Avilion et al. 2003; Liu et al. 2013). Expression becomes restricted to the inner cell mass of the blastocyst and continues in the epiblast, which will give rise to the embryo and germ cells (Avilion et al. 2003). Early during development, expression of Sox2 is restricted to the anterior ectoderm, from which the neuroectoderm and anterior surface ectoderm will arise (Papanayotou et al. 2008; Wood and Episkopou 1999). At later gestational ages, Sox2 is expressed in several tissues derived from the primitive foregut endoderm and post-natal it is present in the epithelium of foregut derived organs including the trachea and proximal lung epithelium (Avilion et al. 2003; Donner et al. 2007; Gontan et al. 2008; Ishii et al. 1998; Schlosser and Ahrens 2004; Taranova et al. 2006; Uchikawa et al. 2003). Importantly, together with Oct4 and Nanog, Sox2 is part of the core transcription factor network in embryonic stem cells, and Sox2 is one of the key factors required to induce pluripotent stem cells (iPSC) from in somatic cells (Avilion et al. 2003; Masui et al. 2007; Takahashi et al. 2007; Takahashi and Yamanaka 2006; Yamanaka 2012). Together with Oct4 and Klf4, Sox2 first co-occupies non-permissive chromatin and the subsequent activation of pluripotency-associated genes by Sox2 (Smith et al. 2016; Xu et al. 2016).

Sox2 for the induction and generation of Induced Pluripotent Stem Cells is warranted, especially since this transgenic line may be useful for understanding the transition from restricted cell types to reprogramming as pluripotent stem cell, and then the differentiation of these stem cells into specific cell types that retain Sox2 expression.

We and others have shown that Sox2 plays an important role in lung epithelial cell differentiation and branching morphogenesis (Gontan et al. 2008; Que et al. 2009; Tompkins et al. 2011). In iSox2SPC-rtTA mice lung, where Sox2 expression is induced in the epithelial cells of the developing airways, cystic lesions were observed (Gontan et al. 2008). The size of these cyst-like structures correlated with the timing and duration of ectopic Sox2 expression (Ochieng et al. 2014). The epithelium of these dilated airway structures had increasing numbers of basal cells and neuroendocrine cells (Gontan et al. 2008). In control lung Sox2 expression in the epithelial tip cells is inhibited by Fgf10 induced β -catenin signalling, which prevents these cells to differentiate in proximal epithelial cells (Domyan et al. 2011; Volckaert et al.

2013). Ectopic expression of Sox2 in these distal epithelial cells aberrantly induced these cells to differentiate into proximal cells, leading to the emergence of basal and neuroendocrine cells. Sox2 directly activated the ΔN Trp63 promoter, indicating that Sox2 is directly responsible for the emergence of basal cells (Ochieng et al. 2014).

The transcriptional activity of Sox2 depends on its interaction with other proteins, leading to 'complex-specific' DNA binding and transcriptional regulation (Kamachi and Kondoh 2013). Several studies have identified Sox2 associating partners in vitro using different kinds of cells (Ahmed et al. 2012; Boyer et al. 2005; Cox et al. 2010; Cox et al. 2013; Donner et al. 2007; Engelen et al. 2011; Fang et al. 2011; Inoue et al. 2007; Kamachi et al. 2001; Kondoh and Kamachi 2010). One of the partners identified in neural stem cells is Chd7. Sox2 and Chd7 cooperate to regulate genes involved in human syndromes that are genetically unrelated but do show a similarity in symptoms (Engelen et al. 2011). By performing large scale immunoprecipitations in stable FLAG/Sox2 transgene embryonic stem (ES) cells, several partners were identified including ES cell self-renewal factors and several lineage-specific transcription factors. Also, Xpo4 was identified as a Sox2 partner, functioning as a nuclear import receptor for Sox2 (Gontan et al. 2009).

Processes in which Sox2 is involved in lung development could be the influenced by specific interaction partners and therefore in vivo binding partners of Sox2 were identified in this study, using a mouse model containing a biotinylated Sox2 (bio-Sox2). The biotinylated Sox2 was efficiently isolated, including associating protein complexes due to the very high affinity of the biotin-streptavidin interaction, which is several magnitudes higher than antibody-antigen interactions (de Boer et al. 2003).

BioSox2 containing complexes were efficiently isolated from mouse embryonic day 18.5 lungs and brains using streptavidin and subsequently analysed by mass spectrometry. We identified a number of putative binding partners involved in lung development, such as Akap8, Ank3, Dkc1, Cavin (Ptrf) and Safb1.

Materials and methods

Generation of bioSox2/birA mice

To generate an N-terminal biotin-tagged Sox2 allele (bioSox2), Sox2 genomic DNA was isolated from library with 129 genomic DNA and a NheI—Asp718 fragment containing the Sox2 exon was used to generate the recombination construct used for targeting IB10 ES cells. Genomic DNA of individual clones was digested with EcoRI and screened with specific probes. The neomycin resistance gene was removed from positive clones by transiently expressing Cre in ES cells, and individual clones were genotyped and karyotyped before injection in blastocysts. Chimaeric mice were crossed and maintained on C57/bl6 background. BioSox2 mice were crossed with birA mice to biotinylate the biotag. Mice were kept under standard conditions and experiments were performed following guidelines of the ethics committee of the Erasmus Medical Center.

Large scale tissue immunoprecipitations

Lungs and brains were isolated from bioSox2/birA and birA mice E18. Tissues were minced into small pieces and a single cell solution was prepared using a cell strainer. Immunoprecipitations were essentially done as previously published (Engelen et al. 2011; Gontan et al. 2009). Cells were lysed in cell lysis buffer (10 mM Hepes 7.6, 1.5 mM MgCl₂, 10 mM KCl; add 0.5 mM DTT + protease inhibitors prior to use), followed by lysis of the nuclei in nuclei lysis buffer (20 mM Hepes pH 7.6, 20% glycerol, 420 mM NaCl, 1.5 mM MgCl₂, 0.2 mM EDTA, add 0.5 mM DTT + 1 × CEF prior to use). Nuclear extracts were diluted 1:1 in low-salt buffer (20 mM Hepes pH7.6, 20% glycerol, 1.5 mM MgCl₂, 0.2 mM EDTA) and incubated with 40 µl Dynabeads[®]M-280 Streptavidin (Cat. No. 112.06 D, Invitrogen) for at least 1 h rotating at 4 °C in non-stick tubes. After washing with wash buffer (20 mM Hepes pH7.6, 20% glycerol, 100 mM KCl, 1.5 mM MgCl₂, 0.2 mM EDTA, 0.02% NP-40; add 1 × CEF prior to use), the beads were resuspended in 40 µl sample buffer (60 mM Tris-HCl pH 6.8, 2% SDS, 0.02% bromophenol blue, 10% glycerol, 1% β-mercaptoethanol, 5 mM DTT) and heated for 10 min at 95 °C. Samples were loaded on pre-cast gel and sent to the department of

Biochemistry for Matrix Assisted Laser Desorption/Ionization-Time of Flight Mass Spectrometry (MALDI-TOF MS) analysis.

BioSox2 immunoprecipitation in transfected HEK cells

HEK cells were cultured in DMEM (Lonza, Verviers, Belgium) with 5% fetal calf serum and 1% penicillin-streptomycin under standard culture conditions. Cells were transfected with a N-terminal tagged bioTEV-Sox2 and birA expression constructs using Lipofectamine-2000 (Invitrogen) according to the manufacturer's manual. Cells were harvested 24 h after transfection and nuclear extracts were prepared by lysing the cells with cell lysis buffer, followed by nuclei lysis buffer. Nuclear extracts were diluted 1:1 in low-salt buffer and incubated with Dynabeads[®]M-280 Streptavidin for at least 1 h rotating at 4 °C in non-stick tubes. After washing with wash buffer, the beads were resuspended in 40 µl sample buffer and heated for 10 min at 95 °C. Mock-transfected HEK cells were used as a control.

Co-transfections and co-immunoprecipitations

HEK cells were transfected with either a myc-tagged TCF3 expression construct (Pereira et al. 2006), together with 2xFLAGbio-Sox2, or with a FLAG-tagged WDR5 construct (Lee and Skalnik 2005), together with myc-Sox2. X-tremeGENE HP DNA Transfection Reagent (Roche, Basel, Switzerland) was used for the transfection according to the manufacturer's manual.^[6] Cells were harvested 24 h after transfection. Total cell extracts were prepared in 300 µl carin buffer (20 mM Tris pH8, 137 mM NaCl, 10 mM EDTA, 1% NP40, 10% glycerol) with Complete protease inhibitor (Roche, Basel, Switzerland). 50 µl was incubated for 2 h at 4 °C in 250 µl carin buffer with antibodies against myc (1668149, Roche) and FLAG (F1804), followed by 1 h incubation with protein G beads (Sigma-Aldrich, St. Louis, MO). After washing with carin buffer, the beads were resuspended in 20 µl sample buffer and heated for 10 min at 95 °C.

Results

Generation of bioSox2 mice

Sox2 associating proteins have mostly been identified using a tagged Sox2 protein expressed in different cell lines (Cox et al. 2010, 2013; Engelen et al. 2011; Fang et al. 2011). In vitro cell culture models lack the microenvironment of cells in vivo, which could result in aberrant expression patterns and therefore a difference in partners in vitro and in vivo. Since the expression of Sox2 is temporally and spatially regulated, it is expected that there is also a dynamic change in interaction partners during the different stages of gestation. In order to isolate and identify in vivo Sox2 complexes with high specificity, we generated a mouse line expressing Sox2 with a small artificial peptide tag of seventeen amino acids (biotag) at the N-terminus. This biotag can be biotinylated in vivo by a biotin ligase protein (birA) and the protein can subsequently be isolated with high affinity using streptavidin (de Boer et al. 2003). As a proof of principle, the functionality of the biotinylated Sox2 protein was tested in vitro by co-expressing the N-terminal bio-tagged Sox2 with the bacterial birA biotin ligase. Previously, we showed that a N-terminal FLAG-tagged Sox2 protein was fully functional (Engelen et al. 2011; Gontan et al. 2009). The biotag was efficiently biotinylated by birA, as shown by western blot and by streptavidin specific precipitation of the biotinylated Sox2 from nuclear extracts (Fig. 1a). Moreover, the biotinylated Sox2 was able to bind to the Sox2 consensus binding site in vitro by an electrophoretic mobility shift assay (data not shown). We also tested the Tobacco Etch Virus (TEV) protease cleavage site, which was introduced after the biotag to facilitate the recovery of streptavidin precipitated bioSox2 from the magnetic streptavidin beads for subsequent analysis. BioSox2 and associating factors were purified from nuclear extracts of bioSox2/birA transfected HEK cells using magnetic streptavidin beads and precipitated proteins were released either by incubation with the TEV protease or by heating the beads for ten minutes. Western blot analysis showed that the TEV protease recognized and processed the bioSox2 protein, but unfortunately the cleaved Sox2 did not elute from the beads (Fig. 1b). Since the level of Sox2 is important, we decided to design a fragment of the Sox2 locus with the bio-tag to

specifically target the endogenous locus by homologous recombination (Fig. 1c).

Therefore, a 11 kb *NheI*-Asp718 genomic fragment of 129 mouse DNA containing the Sox2 exon (− 4123 till + 7221, TS is position 1) was isolated. A fragment containing a Neomycin resistance gene (*Neo*) driven by the HSV-tk promoter and flanked by loxP sites was inserted in the *SpeI* site upstream the Sox2 exon (− 478), the site which has previously been used to construct Sox2 mutant mice (Taranova et al. 2006). With this fragment, an additional *EcoRI* site was created. Downstream of the Sox2 encoding region, in the *SphI* site (2445, counted from TS), a loxP site was introduced, also containing an *EcoRI* site. Finally, an oligonucleotide with the sequence coding for the 17 amino acid biotag and a TEV endoprotease cleavage site was inserted between the first and second amino acid encoding sequence of the Sox2 gene (+362). Thus, the translation initiates at the endogenous ATG and results in an in-frame insertion of the biotag leading to a fusion protein (bio-TEV-Sox2). The biotag can be biotinylated at a specific lysine residue by the bacterial birA ligase, as previously shown (de Boer et al. 2003). Homologous recombination was performed in 129/Ola derived IB10 ES cells, and subsequent isolated Neomycin resistant clones were analysed by Southern blotting (Fig. 1d). One of the ES clones that had the correct integration and the correct karyotype was subsequently used to transiently express Cre recombinase to remove the Neo cassette. After the removal of the cassette, the ES clone was injected into blastocysts and transferred to pseudo-pregnant females. The resulting mouse line contained the biotag in frame in the Sox2 coding sequence (see Fig. 1e), as well as loxP sites around the Sox2 exon, which may be used to genetically ablate the Sox2 gene. The mice that contained the correct targeted Sox2 locus (bioSox2 mice) were subsequently crossed with a mouse line ubiquitously expressing a HA-tagged birA from the ROSA26 locus to generate bioSox2/birA mice (Driegen et al. 2005).

Homozygous bioSox2 mice, with or without the biotin ligated to the N-terminal tag, were born at Mendelian ratios, were viable and fertile. However, the targeted locus may interfere with the pattern of expression, thus we first compared the expression pattern of the biotinylated Sox2 with the endogenous, untagged Sox2. Several tissues were isolated from adult mice that either had the bioSox2 allele

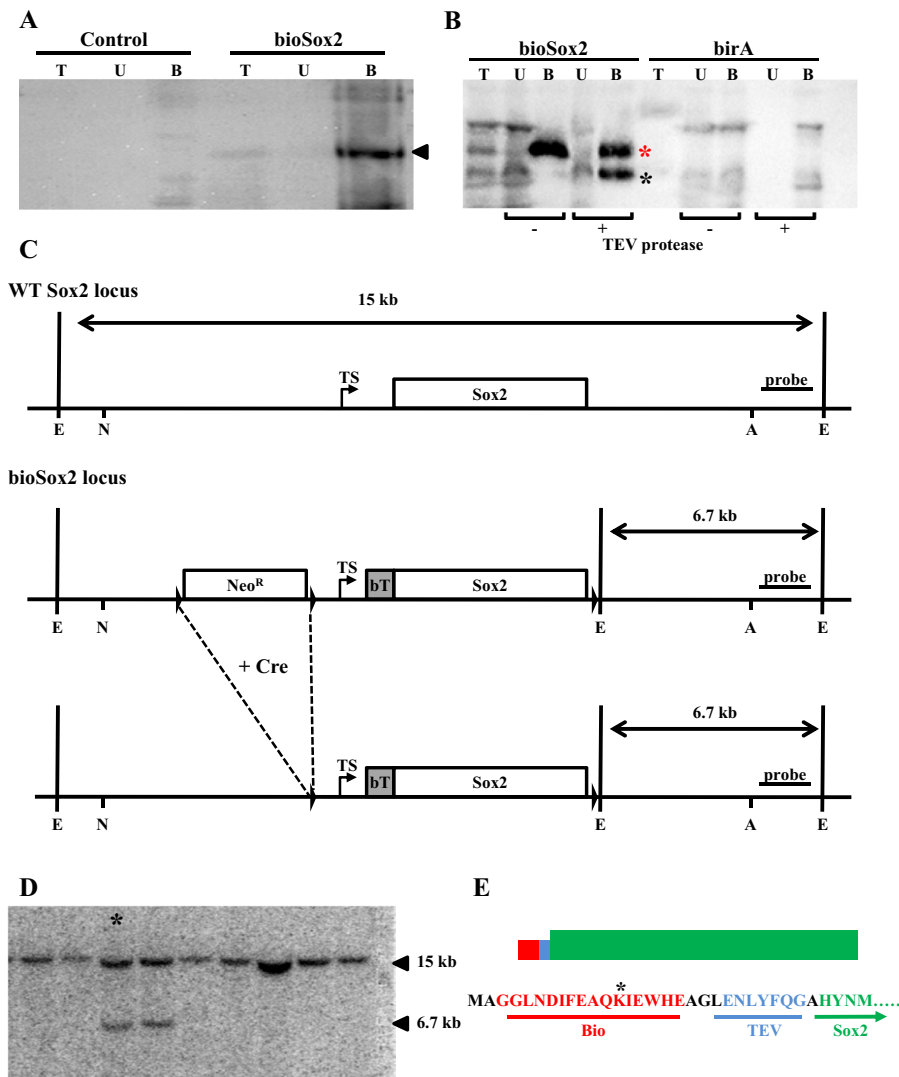


Fig. 1 Development of biotin tagged Sox2 locus. **a** Nuclear extracts of transiently transfected HEK cells with control vector (control) or expression constructs for birA and bioSox2 (bioSox2) were incubated with streptavidin coupled dynabeads. Total input (*T*), unbound fraction (*U*) and the streptavidin bound fraction (*B*) analyzed on western blot using HRP coupled streptavidin. Arrow indicates the purified 40 kDa biotinylated Sox2 protein. **b** Identical experiment as in **a**, except that the purified samples were incubated with or without TEV protease. Although the bioSox2 was cleaved by the TEV, the protein remained attached to the beads. *T* is a fraction of the total input material before the beads were added to the extract. *U* represents the unbound fraction eluted from the beads after incubation with the TEV protease, whereas *B* represents the bound fraction, which was left on the beads after the TEV protease incubation. The *B* fraction was subsequently retrieved by boiling the beads.

c Construct design to modify the Sox2 locus by homologous recombination. The Neomycin cassette was introduced upstream the transcriptional start site (*TS*), flanked by two loxP sites (arrow heads). The restriction sites used to isolate the fragment used to electroporate ES cells are indicated (N: NheI; A: Asp718), as well as the EcoRI sites (*E*) to analyze genomic DNA with the 3' probe. **d** Representative Southern blot of ES genomic DNA digested with EcoRI and probed with the indicated 3' probe, resulting in the wild type band at 15709 bp, and a mutant band 6771. **e** Schematic overview of the bioTEV-Sox2 protein and the N-terminal amino acids representing the translational start of the Sox2 protein (MA) followed by the Bio tag, a short hinge region (AGL) and the TEV protease cleavage recognition site (TEV). The asterisk indicates the lysine residue that is biotinylated by the BirA protein

(*bioSox2*), carried the HA-BirA transgene (*birA*), or were double positive for the *bioSox2* allele and the HA-BirA transgene (*bioSox2/birA*). Immunohistochemistry using an antibody against Sox2 or HRP-conjugated streptavidin showed that expression pattern of the *bioSox2* in the esophagus and lung is similar to the endogenous Sox2 expression (Fig. 2a). the expression of the biotinylated Sox2 protein was identical to the control Sox2, as shown for lung and trachea (Fig. 2a). Next, we evaluated the level of transcription by isolating nuclear extracts of embryonic brains at gestational age 17.5. Subsequent western blot analysis showed that the *bioSox2* (40 kDa) was equally expressed as the endogenous Sox2 (34 kDa; Fig. 2b). This provided evidence that the targeting itself did not interfere with the transcriptional and translational machinery.

Thus, the expression of the tagged *bioSox2* was comparable to normal, untagged Sox2, and the *bioSox2* was efficiently biotinylated *in vivo* by the

birA protein. Collectively, this indicated that the *bioSox2* gene is normally expressed and the tagged protein is fully functional in all tissues. It also implies that all the partners of Sox2 are still able to associate with *bioSox2* and fulfill their biological roles, since the absence of correct complex formation will lead to lethal phenotypes.

BioSox2 affinity-purification

As a proof of principle, Sox2 complexes were isolated from fetal trachea and lung tissue isolated just prior to birth. At this phase of development, the epithelium of the trachea and upper airways consists of Sox2 positive cells, so total lungs were isolated at day 18.5 of gestation of *bioSox2/HA-birA* and *HA-birA* pups. Nuclear extracts were prepared and *bioSox2* complexes were purified with streptavidin-coupled magnetic beads. The *bioSox2* purification was performed in triplicate and the precipitation was first

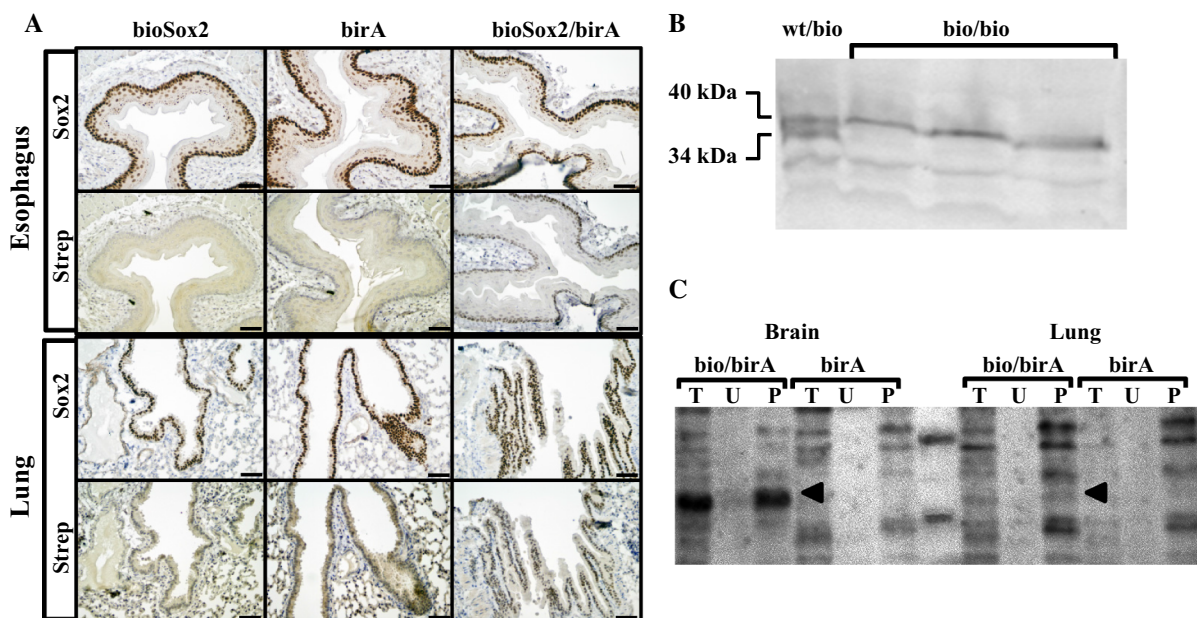


Fig. 2 Functional analysis of the *bioSox2* mouse. **a** Immunohistochemistry analysis of esophagus and lungs of adult *bioSox2*, *birA* and *bioSox2/birA* mice showing the expression of Sox2 using an antibody against Sox2 protein (Sox2). Using HRP coupled streptavidin (Strep) shows that the biotinylated Sox2 is expressed in the same cells as the normal Sox2. Moreover, biotinylation only occurs in the mice that carries the *bioSox2* allele and the *birA* transgene. **b** Total protein extracts isolated from E 17.5 brains of heterozygous Sox2/*bioSox2* mice (*wt/bio*) and homozygous *bioSox2* mice (*bio/bio*) were analyzed

by western blot analysis using a Sox2 antibody. This showed that the expression of the Sox2 (34 kDa) and *bioSox2* (40 kDa) are comparable (lane *wt/bio*). **c** *In vivo* purification of *bioSox2* from nuclear extracts of brain and lung tissue isolated at E18 from *bioSox2/birA* (*bio/birA*) and *birA* only (*birA*) mice using dynabeads. Arrowheads indicate the band representing the *bioSox2*, showing specific purification of the *bioSox2* in the *bioSox2/birA* extracts. The western blot is labeled with streptavidine coupled HRP. Indicate lanes are total input (*T*), unbound fraction (*U*) and the purified fraction (*P*)

evaluated, indicating that the bioSox2 was efficiently purified from the bioSox2/birA mouse samples compared to the control birA only samples (Fig. 2c; arrowheads). It also showed that the bioSox2 protein was less prominently present in the lung samples, as expected, since Sox2 is expressed in a subset of epithelial cells.

The total precipitated proteins were separated on a polyacrylamide gel, which was stained with Coomassie Brilliant Blue and analyzed by MALDI-TOF MS. Comparing the three independent immunoprecipitations, 114 unique proteins were identified with a similar accession code and a mascot score above 80 that were enriched in the lung, while in the brain 28 unique proteins were found. Enrichment was determined by subtracting the number of unique proteins in the birA samples from the number of unique proteins in the bioSox2/birA samples. Aside from the identification of several potential binding partners that we previously described in epitope-tagged Sox2 pull down experiments performed with lysates from mouse embryonic stem cells and mouse neural stem cells (Engelen et al. 2011; Gontan et al. 2009), we found a number of potential partners that were linked to respiratory phenotypes in mice when ablated, including Akap8, Ank3, Dkc1, Cavin (Ptrf) and Safb1 (Fig. 3a).

Wdr5 and Tcf3 are binding partners of Sox2

Putative binding partners were selected on the basis of their Mascot scores and the number of peptides retrieved in the mass spectrometry analysis. This set of proteins was subsequently analyzed for known cellular functions and their potential role in lung development, which resulted in a short list of putative Sox2 interacting proteins. To validate our results, we selected the WD repeat domain 5 (Wdr5) and Transcription factor 3 (Tcf3) proteins, since Wdr5 was described as a potential Sox2 binding partner in ES cells and we previously identified Tcf3 as a putative Sox2 binding protein in neural stem cells (Ang et al. 2011; Engelen et al. 2011).

Next, HEK cells were transiently transfected with expression constructs of a FLAG-tagged Sox2 and a myc-tagged Tcf3, or a myc-tagged Sox2 with a FLAG/HA-tagged Wdr5 to analyze their physical interaction. Extracts of transfected cells were incubated with the appropriate antibodies to immunoprecipitate the

tagged Sox2 or Tcf3/Wdr5 and co-precipitated proteins were analyzed. We first analysed whether we could detect the interaction between Sox2 and one of its known partners, Wdr5. Immunoprecipitation of FLAG-Wdr5 with a FLAG antibody efficiently co-precipitated the myc-Sox2 protein as indicated by the myc positive signal (Fig. 3b). In the reverse experiment, immunoprecipitation of myc-Sox2 with a myc antibody showed co-precipitation the FLAG-Wdr5 protein with the FLAG antibody. Next, we analysed whether the putative partner, Tcf3, could also be co-precipitated with Sox2. Indeed, the FLAG-Sox2 efficiently associated with myc-Tcf3 as shown by the FLAG and myc specific precipitations (Fig. 3c). Thus, our data showed that aside from Wdr5, we identified Tcf3 as a specific partner of Sox2.

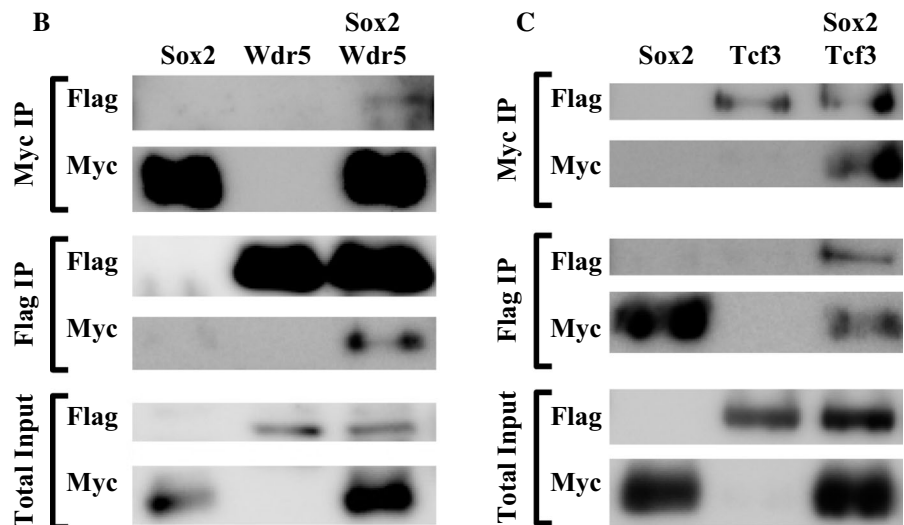
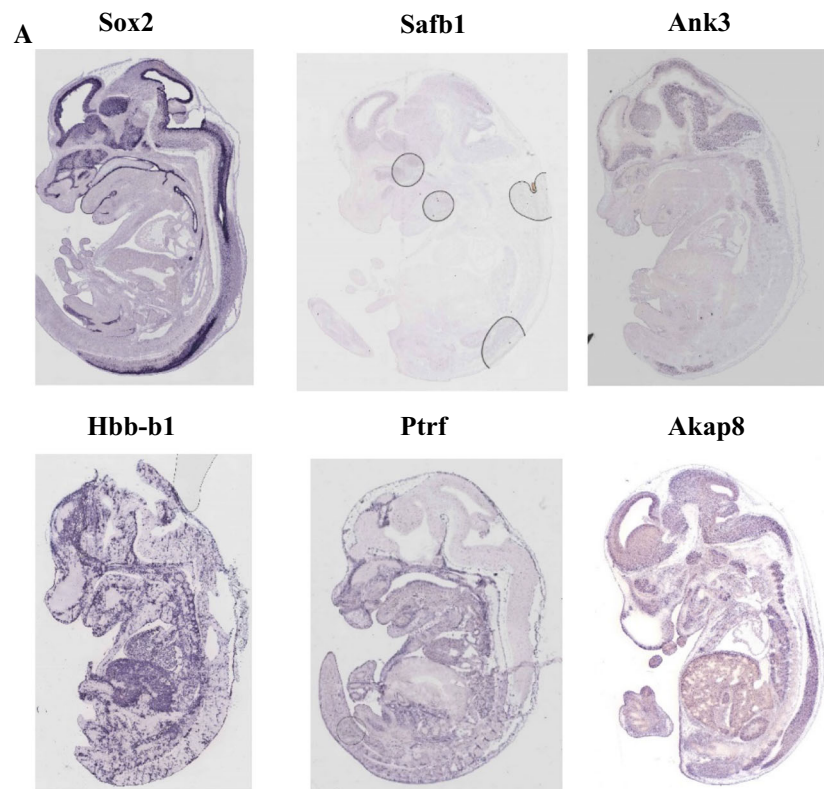
Discussion

Several studies have identified Sox2 interaction partners *in vitro* using different approaches (Cox et al. 2010, 2013; Engelen et al. 2011; Fang et al. 2011). To gain more knowledge about the role of Sox2-partner complexes *in vivo*, we developed a mouse model expressing a biotinylatable Sox2 protein. As a proof of principle, we have efficiently purified the tagged Sox2 protein using streptavidin in a single-step approach using fetal lung.

The mass spectrometry data of the three large scale immunoprecipitations resulted in low scores of the bait, the bioSox2. This is partially due to the unfavourable distribution of the tryptic cleavage sites in the Sox2 protein and the presence of acidic amino acids within some of its peptides. Also, there is a low number of Sox2⁺ cells in the lung (~ 10%) compared to the brain where the bait-Sox2 score is much higher (not shown), showing that the assay itself works very efficiently. To obtain higher mascot scores and enrichment, we repeated the IP with a more protein as input. This resulted in a better enrichment of Sox2.

Tcf3 and Wdr5 were used to validate physical interaction with Sox2. Tcf3 was also previously identified as a potential Sox2 partner in a large scale purification assay in neural stem cells (Engelen et al. 2011). Tcf3 is involved in anterior–posterior axis induction during early embryonic development. Tcf3^{-/-} mice showed an expansion and duplication in the axial mesoderm (Merrill et al. 2004). Tcf3 is

Fig. 3 In vivo isolation of bioSox2 complexes. **a** Large scale purification of bioSox2 complexes from E18.5 lungs revealed several putative Sox2 associating proteins. The expression pattern of some of these partners is represented (genepaint). **b**, **c** Physical interaction between Wdr5 (**b**) and Tcf3 (**c**) with Sox2 was confirmed in co-immunoprecipitations. The myc antibody precipitated the myc-Sox2 (**b**) or myc-Tcf3 (**c**), and coprecipitated the FLAG tagged Wdr5 (**b**) or Sox2 (**c**). These interactions were confirmed by performing the reciprocal immunoprecipitations



also involved in stem cell renewal, by inhibiting a subset of genes which results in repression of self-renewal (Yi et al. 2011). Tcf3 is expressed in skin epithelial cells and overexpression results in repression of epithelial cell differentiation (Merrill et al. 2001; Nguyen et al. 2006). Genetic ablation of the

Tcf3- β catenin interaction showed that this interaction is not required before gastrulation, but later during development in several crucial processes, such as vascular integrity and neural tube closure (Wu et al. 2012). It also showed that β catenin relieves Tcf3 repression of Lef1, and subsequently activate Wnt

target genes through its interaction with Lef1 (Wu et al. 2012). The antagonistic effect of Wnt signaling and Tcf3 expression was also confirmed in ES cells (Atlasi et al. 2013; Yi et al. 2011).

Wdr5 is involved in several processes including cell cycle progression and gene regulation. It interacts with Hdac3 under hypoxic conditions and then induces mesenchymal gene expression (Wu et al. 2011). As such, it plays a crucial role in hypoxia-induced epithelial-mesenchymal transition, which is important in processes as organ development and fibrosis. Wdr5 is also a direct target of Sry, as well as an interaction partner, and the Wdr5-Sry complex activates Sox9 and represses β -catenin expression in sex determination (Xu et al. 2012). In embryonic stem cells, Wdr5 is identified as a regulator of embryonic stem cell renewal. In these cells, Wdr5 is a direct binding partner of Oct4 and it has been shown that they have an overlap in gene regulatory functions. Immunoprecipitations done in the same study, also suggested interaction between Sox2 and Wdr5 (Ang et al. 2011). Co-immunoprecipitations that we performed validated this interaction. Wdr5 was also enriched in our first large scale bioSox2 immunoprecipitation in both the lung and trachea, suggesting that the Wdr5-Sox2 protein complex can be involved in lung development.

Several of the potential partners identified in the lung tissue IP can be linked to a respiratory phenotype in mice. Akap8 (AKAP95), a member of the A-kinase anchor protein family, is a scaffold protein. Akap8 is together with fidgetin critical for palatogenesis in mice. Mice with only Akap8 mutations do not show any abnormalities, but mice with both Akap8 and fidgetin deficiencies show symptoms of respiratory distress and die due to cleft palate (Yang et al. 2006). Ankyrin 3 (Ank3/Ankyrin G) is a protein that is linked to integral membrane proteins. In bronchial epithelial cells, Ankyrin G is necessary for the biogenesis and preservation of the lateral membrane (Kizhatil and Bennett 2004; Kizhatil et al. 2007). Ank3 mutant mice show abnormal bronchus epithelium morphology (Jenkins et al. 2013). Dyskerin (DKC1) is linked to dyskeratosis congenital, which is characterized by premature aging and a higher tumor susceptibility. Patients suffering from this disease also display interstitial lung fibrosis. Hypomorphic Dkc1 mutant mice show lung abnormalities, including abnormal morphology of the pulmonary parenchyma, alveolus

and alveolus wall, lung inflammation and pulmonary interstitial fibrosis (Ruggero et al. 2003). Cavin1 (Ptrf) is a protein that is involved in the regulation of rRNA transcription. Deletion of Cavin1 results in loss of caveolae in the lung, increased density of lung tissue and elevated pulmonary arterial pressure (Sward et al. 2013). Deletion of Cavin2 results in loss of endothelial caveolae in lung tissue (Hansen et al. 2013). Ptrf abnormal lung morphology and abnormal vasculature morphology. Scaffold attachment factor B1 (Safb1) is involved in development, growth and reproduction. abnormal lung alveolus development and *Safb1*^{-/-} mice show defects in lung maturation resulting in abnormal development of the alveoli (Ivanova et al. 2005). Similarities in the expression pattern of Sox2 and these potential partners at E14.5 can be found in supplementary data 1 (Genepaint, Visel et al. 2004).

In conclusion, we generated a mouse model containing a biotinylatable-tag targeted at the translational start site of the endogenous Sox2 gene. BioSox2 containing complexes can efficiently be isolated from various Sox2 expressing tissues and cell types using the mouse model.

Acknowledgements We would like to thank Dr. David Skalnik for the Wdr5 construct, Dr. Brad Merrill for the Tcf3 construct and Prof. Dies Meijer and Dr. Martine Jaegle for the HA-birA mice. Furthermore, we would like to thank Dr. Raymond Poot for his initial help by analyzing the proteomics data and Dr. Cristina Gontan for starting the initial cloning of the bioSox2 targeting construct.

Funding This study was funded by SSWO (Grant Number 641 KS; and Grant Number S14-12 EE).

Compliance with ethical standards

Conflict of interest The authors declare that they have no conflict of interest.

Open Access This article is distributed under the terms of the Creative Commons Attribution 4.0 International License (<http://creativecommons.org/licenses/by/4.0/>), which permits unrestricted use, distribution, and reproduction in any medium, provided you give appropriate credit to the original author(s) and the source, provide a link to the Creative Commons license, and indicate if changes were made.

References

Ahmed M, Xu JS, Xu PX (2012) EYA1 and SIX1 drive the neuronal developmental program in cooperation with the SWI/SNF chromatin-remodeling complex and Sox2 in the

- mammalian inner ear. *Development* 139:1965–1977. <https://doi.org/10.1242/dev.071670>
- Ang YS et al (2011) Wdr5 mediates self-renewal and reprogramming via the embryonic stem cell core transcriptional network. *Cell* 145:183–197. <https://doi.org/10.1016/j.cell.2011.03.003>
- Atlasi Y et al (2013) Wnt signaling regulates the lineage differentiation potential of mouse embryonic stem cells through Tcf3 down-regulation. *PLoS Genet* 9:e1003424. <https://doi.org/10.1371/journal.pgen.1003424>
- Avilion AA, Nicolis SK, Pevny LH, Perez L, Vivian N, Lovell-Badge R (2003) Multipotent cell lineages in early mouse development depend on Sox2 function. *Genes Dev* 17:126–140. <https://doi.org/10.1101/gad.224503>
- Boyer LA et al (2005) Core transcriptional regulatory circuitry in human embryonic stem cells. *Cell* 122:947–956. <https://doi.org/10.1016/j.cell.2005.08.020>
- Cox JL, Mallanna SK, Luo X, Rizzino A (2010) Sox2 uses multiple domains to associate with proteins present in Sox2-protein complexes. *PLoS ONE*. <https://doi.org/10.1371/journal.pone.0015486>
- Cox JL, Wilder PJ, Gilmore JM, Wuebben EL, Washburn MP, Rizzino A (2013) The Sox2-interactome in brain cancer cells identifies the requirement of MSI2 and USP9X for the growth of brain tumor cells. *PLoS ONE*. <https://doi.org/10.1371/journal.pone.0062857>
- de Boer E et al (2003) Efficient biotinylation and single-step purification of tagged transcription factors in mammalian cells and transgenic mice. *Proc Natl Acad Sci USA* 100:7480–7485
- Domyani ET, Ferretti E, Throckmorton K, Mishina Y, Nicolis SK, Sun X (2011) Signaling through BMP receptors promotes respiratory identity in the foregut via repression of Sox2. *Development* 138:971–981. <https://doi.org/10.1242/dev.053694>
- Donner AL, Episkopou V, Maas RL (2007) Sox2 and Pou2f1 interact to control lens and olfactory placode development. *Dev Biol* 303:784–799
- Driegen S et al (2005) A generic tool for biotinylation of tagged proteins in transgenic mice. *Transgenic Res* 14:477–482. <https://doi.org/10.1007/s11248-005-7220-2>
- Engelen E et al (2011) Sox2 cooperates with Chd7 to regulate genes that are mutated in human syndromes. *Nat Genet* 43:607–U153. <https://doi.org/10.1038/Ng.825>
- Fang XF et al (2011) Landscape of the Sox2 protein–protein interactome. *Proteomics* 11:921–934. <https://doi.org/10.1002/pmic.201000419>
- Gontan C, de Munck A, Vermeij M, Grosveld F, Tibboel D, Rottier R (2008) Sox2 is important for two crucial processes in lung development: branching morphogenesis and epithelial cell differentiation. *Dev Biol* 317:296–309
- Gontan C et al (2009) Exportin 4 mediates a novel nuclear import pathway for Sox family transcription factors. *J Cell Biol* 185:27–34. <https://doi.org/10.1083/jcb.200810106>
- Hansen CG, Shvets E, Howard G, Riento K, Nichols BJ (2013) Deletion of cavin genes reveals tissue-specific mechanisms for morphogenesis of endothelial caveolae. *Nat Commun* 4:1831. <https://doi.org/10.1038/ncomms2808>
- Inoue M, Kamachi Y, Matsunami H, Imada K, Uchikawa M, Kondoh H (2007) PAX6 and Sox2-dependent regulation of the Sox2 enhancer N-3 involved in embryonic visual system development. *Genes Cells* 12:1049–1061. <https://doi.org/10.1111/j.1365-2443.2007.01114.x>
- Ishii Y, Rex M, Scotting PJ, Yasugi S (1998) Region-specific expression of chicken Sox2 in the developing gut and lung epithelium: regulation by epithelial-mesenchymal interactions. *Dev Dyn* 213:464–475
- Ivanova M et al (2005) Scaffold attachment factor B1 functions in development, growth, and reproduction. *Mol Cell Biol* 25:2995–3006. <https://doi.org/10.1128/MCB.25.8.2995-3006.2005>
- Jenkins PM, Vasavda C, Hostettler J, Davis JQ, Abdi K, Bennett V (2013) E-cadherin polarity is determined by a multi-function motif mediating lateral membrane retention through ankyrin-G and apical-lateral transcytosis through clathrin. *J Biol Chem* 288:14018–14031. <https://doi.org/10.1074/jbc.M113.454439>
- Kamachi Y, Kondoh H (2013) Sox proteins: regulators of cell fate specification and differentiation. *Development* 140:4129–4144. <https://doi.org/10.1242/dev.091793>
- Kamachi Y, Uchikawa M, Tanouchi A, Sekido R, Kondoh H (2001) Pax6 and Sox2 form a co-DNA-binding partner complex that regulates initiation of lens development. *Genes Dev* 15:1272–1286. <https://doi.org/10.1101/gad.887101>
- Kizhatil K, Bennett V (2004) Lateral membrane biogenesis in human bronchial epithelial cells requires 190-kDa ankyrin-G. *J Biol Chem* 279:16706–16714. <https://doi.org/10.1074/jbc.M314296200>
- Kizhatil K, Davis JQ, Davis L, Hoffman J, Hogan BL, Bennett V (2007) Ankyrin-G is a molecular partner of E-cadherin in epithelial cells and early embryos. *J Biol Chem* 282:26552–26561. <https://doi.org/10.1074/jbc.M703158200>
- Kondoh H, Kamachi Y (2010) SOX-partner code for cell specification: Regulatory target selection and underlying molecular mechanisms. *Int J Biochem Cell B* 42:391–399. <https://doi.org/10.1016/j.biocel.2009.09.003>
- Lee JH, Skalnik DG (2005) CpG-binding protein (CXXC finger protein 1) is a component of the mammalian Set1 histone H3-Lys4 methyltransferase complex, the analogue of the yeast Set1/COMPASS complex. *J Biol Chem* 280:41725–41731. <https://doi.org/10.1074/jbc.M508312200>
- Liu K et al (2013) The multiple roles for Sox2 in stem cell maintenance and tumorigenesis. *Cell Signal* 25:1264–1271. <https://doi.org/10.1016/j.cellsig.2013.02.013>
- Masui S et al (2007) Pluripotency governed by Sox2 via regulation of Oct3/4 expression in mouse embryonic stem cells. *Nat Cell Biol* 9:625–635
- Merrill BJ, Gat U, DasGupta R, Fuchs E (2001) Tcf3 and Lef1 regulate lineage differentiation of multipotent stem cells in skin. *Genes Dev* 15:1688–1705. <https://doi.org/10.1101/gad.891401>
- Merrill BJ, Pasolli HA, Polak L, Rendl M, Garcia-Garcia MJ, Anderson KV, Fuchs E (2004) Tcf3: a transcriptional regulator of axis induction in the early embryo. *Development* 131:263–274. <https://doi.org/10.1242/dev.00935>
- Nguyen H, Rendl M, Fuchs E (2006) Tcf3 governs stem cell features and represses cell fate determination in skin. *Cell* 127:171–183

- Ochieng JK et al (2014) Sox2 regulates the emergence of lung basal cells by directly activating the transcription of Trp63. *Am J Respir Cell Mol Biol*. <https://doi.org/10.1165/rcmb.2013-0419oc>
- Papanayotou C et al (2008) A mechanism regulating the onset of Sox2 expression in the embryonic neural plate. *PLoS Biol* 6:e2
- Pereira L, Yi F, Merrill BJ (2006) Repression of Nanog gene transcription by Tcf3 limits embryonic stem cell self-renewal. *Mol Cell Biol* 26:7479–7491. <https://doi.org/10.1128/MCB.00368-06>
- Pevny L, Placzek M (2005) SOX genes and neural progenitor identity. *Curr Opin Neurobiol* 15:7–13
- Que J, Luo X, Schwartz RJ, Hogan BL (2009) Multiple roles for Sox2 in the developing and adult mouse trachea. *Development* 136:1899–1907. <https://doi.org/10.1242/dev.034629>
- Ruggero D et al (2003) Dyskeratosis congenita and cancer in mice deficient in ribosomal RNA modification. *Science* 299:259–262. <https://doi.org/10.1126/science.1079447>
- Schlosser G, Ahrens K (2004) Molecular anatomy of placode development in *Xenopus laevis*. *Dev Biol* 271:439–466
- Smith ZD, Sindhu C, Meissner A (2016) Molecular features of cellular reprogramming and development. *Nat Rev Mol Cell Biol* 17:139–154. <https://doi.org/10.1038/nrm.2016.6>
- Sward K, Sadegh MK, Mori M, Erjefalt JS, Rippe C (2013) Elevated pulmonary arterial pressure and altered expression of Ddah1 and Arg1 in mice lacking cavin-1/PTRF. *Physiol Rep* 1:e00008. <https://doi.org/10.1002/phy2.8>
- Takahashi K, Yamanaka S (2006) Induction of pluripotent stem cells from mouse embryonic and adult fibroblast cultures by defined factors. *Cell* 126:663–676. <https://doi.org/10.1016/j.cell.2006.07.024>
- Takahashi K, Tanabe K, Ohnuki M, Narita M, Ichisaka T, Tomoda K, Yamanaka S (2007) Induction of pluripotent stem cells from adult human fibroblasts by defined factors. *Cell* 131:861–872
- Taranova OV, Magness ST, Fagan BM, Wu Y, Surzenko N, Hutton SR, Pevny LH (2006) Sox2 is a dose-dependent regulator of retinal neural progenitor competence. *Genes Dev* 20:1187–1202
- Tompkins DH, Besnard V, Lange AW, Keiser AR, Wert SE, Bruno MD, Whitsett JA (2011) Sox2 activates cell proliferation and differentiation in the respiratory epithelium. *Am J Respir Cell Mol Biol* 45:101–110. <https://doi.org/10.1165/rcmb.2010-0149oc>
- Uchikawa M, Ishida Y, Takemoto T, Kamachi Y, Kondoh H (2003) Functional analysis of chicken Sox2 enhancers highlights an array of diverse regulatory elements that are conserved in mammals. *Dev Cell* 4:509–519
- Visel A, Thaller C, Eichele G (2004) GenePaint.org: an atlas of gene expression patterns in the mouse embryo. *Nucleic Acids Res* 32:D552–D556. <https://doi.org/10.1093/nar/gkh029>
- Volckaert T, Campbell A, Dill E, Li C, Minoio P, De Langhe S (2013) Localized Fgf10 expression is not required for lung branching morphogenesis but prevents differentiation of epithelial progenitors. *Development* 140:3731–3742. <https://doi.org/10.1242/dev.096560>
- Wood HB, Episkopou V (1999) Comparative expression of the mouse Sox1, Sox2 and Sox3 genes from pre-gastrulation to early somite stages. *Mech Dev* 86:197–201
- Wu MZ et al (2011) Interplay between HDAC3 and WDR5 is essential for hypoxia-induced epithelial-mesenchymal transition. *Mol Cell* 43:811–822. <https://doi.org/10.1016/j.molcel.2011.07.012>
- Wu CI, Hoffman JA, Shy BR, Ford EM, Fuchs E, Nguyen H, Merrill BJ (2012) Function of Wnt/beta-catenin in counteracting Tcf3 repression through the Tcf3-beta-catenin interaction. *Development* 139:2118–2129. <https://doi.org/10.1242/dev.076067>
- Xu Z et al (2012) Synergistic effect of SRY and its direct target, WDR5, on Sox9 expression. *PLoS ONE*. <https://doi.org/10.1371/journal.pone.0034327>
- Xu Y et al (2016) Transcriptional control of somatic cell reprogramming. *Trends Cell Biol* 26:272–288. <https://doi.org/10.1016/j.tcb.2015.12.003>
- Yamanaka S (2012) Induced pluripotent stem cells: past, present, and future. *Cell Stem Cell* 10:678–684. <https://doi.org/10.1016/j.stem.2012.05.005>
- Yang Y, Mahaffey CL, Berube N, Frankel WN (2006) Interaction between fidgetin and protein kinase A-anchoring protein AKAP95 is critical for palatogenesis in the mouse. *J Biol Chem* 281:22352–22359. <https://doi.org/10.1074/jbc.M603626200>
- Yi F, Pereira L, Hoffman JA, Shy BR, Yuen CM, Liu DR, Merrill BJ (2011) Opposing effects of Tcf3 and Tcf1 control Wnt stimulation of embryonic stem cell self-renewal. *Nat Cell Biol* 13:762–770. <https://doi.org/10.1038/ncb2283>