

EUR Research Information Portal

Treatment capacity required for full-scale implementation of lung cancer screening in the United States

Published in:
Cancer

Publication status and date:
Published: 01/01/2019

DOI (link to publisher):
[10.1002/cncr.32026](https://doi.org/10.1002/cncr.32026)

Document Version
Publisher's PDF, also known as Version of record

Citation for the published version (APA):

Blom, E., ten Haaf, K., Arenberg, DA., & de Koning, H. (2019). Treatment capacity required for full-scale implementation of lung cancer screening in the United States. *Cancer*, 125(12), 2039-2048. <https://doi.org/10.1002/cncr.32026>

[Link to publication on the EUR Research Information Portal](#)

Terms and Conditions of Use

Except as permitted by the applicable copyright law, you may not reproduce or make this material available to any third party without the prior written permission from the copyright holder(s). Copyright law allows the following uses of this material without prior permission:


- you may download, save and print a copy of this material for your personal use only;
- you may share the EUR portal link to this material.

In case the material is published with an open access license (e.g. a Creative Commons (CC) license), other uses may be allowed. Please check the terms and conditions of the specific license.

Take-down policy

If you believe that this material infringes your copyright and/or any other intellectual property rights, you may request its removal by contacting us at the following email address: openaccess.library@eur.nl. Please provide us with all the relevant information, including the reasons why you believe any of your rights have been infringed. In case of a legitimate complaint, we will make the material inaccessible and/or remove it from the website.

Treatment Capacity Required for Full-Scale Implementation of Lung Cancer Screening in the United States

Erik F. Blom, MD ¹; Kevin ten Haaf, PhD¹; Douglas A. Arenberg, MD²; and Harry J. de Koning, MD, PhD¹

BACKGROUND: Full-scale implementation of lung cancer screening in the United States will increase detection of early stages. This study was aimed at assessing the capacity required for treating those cancers. **METHODS:** A well-established microsimulation model was extended with treatment data from the National Cancer Database. We assessed how treatment demand would change when implementing lung cancer screening in 2018. Three policies were assessed: 1) annual screening of current smokers and former smokers who quit fewer than 15 years ago, aged 55 to 80 years, with a smoking history of at least 30 pack-years (US Preventive Services Task Force [USPSTF] recommendations); 2) annual screening of current smokers and former smokers who quit fewer than 15 years ago, aged 55 to 77 years, with a smoking history of at least 30 pack-years (Centers for Medicare and Medicaid Services [CMS] recommendations); and 3) annual screening of current smokers and former smokers who quit fewer than 10 years ago, aged 55 to 75 years, with a smoking history of at least 40 pack-years (the most cost-effective policy in Ontario [Ontario]). The base-case screening adherence was a constant 50%. Sensitivity analyses assessed other adherence levels, including a linear buildup to 50% between 2018 and 2027. **RESULTS:** The USPSTF policy would require 37.0% more lung cancer surgeries in 2015-2040 than no screening, 2.2% less radiotherapy, and 5.4% less chemotherapy; 5.7% more patients would require any therapy. The increase in surgical demand would be 96.1% in 2018, 46.0% in 2023, 38.3% in 2028, and 24.9% in 2040. Adherence strongly influenced results. By 2018, surgical demand would range from 52,619 (20% adherence) to 96,121 (80%). With a gradual buildup of adherence, the increase in surgical demand would be 9.6% in 2018, 38.3% in 2023, 42.0% in 2028, and 24.4% in 2040. Results for the CMS and Ontario policies were similar, although the changes in comparison with no screening were smaller. **CONCLUSIONS:** Full-scale implementation of lung cancer screening causes a major increase in surgical demand, with a peak within the first 5 years. A gradual buildup of adherence can spread this peak over time. Careful surgical capacity planning is essential for successfully implementing screening. *Cancer* 2019;125:2039-2048. © 2019 The Authors. *Cancer* published by Wiley Periodicals, Inc. on behalf of American Cancer Society. This is an open access article under the terms of the Creative Commons Attribution-NonCommercial-NoDerivs License, which permits use and distribution in any medium, provided the original work is properly cited, the use is non-commercial and no modifications or adaptations are made.

KEYWORDS: early detection of cancer, health resources, health workforce, lung neoplasms, therapy.

INTRODUCTION

Despite decreasing incidence rates, lung cancer is still the leading cause of cancer-related mortality in the United States.¹ The National Lung Screening Trial (NLST) has shown that 3 annual low-dose computed tomography (LDCT) screenings for lung cancer can reduce lung cancer mortality by 20% in comparison with 3 annual chest radiography screenings.² Since then, both the US Preventive Services Task Force (USPSTF)³ and the Centers for Medicare and Medicaid Services (CMS)⁴ have issued recommendations for LDCT screening for lung cancer. The USPSTF recommendations have been partly based on modeling efforts.⁵

The standard of care is surgery for early-stage non-small cell lung cancer (NSCLC), a combination of chemotherapy and radiotherapy for locally advanced NSCLC, and chemotherapy for advanced NSCLC.⁶ Consequently, early detection by lung cancer screening is expected to increase the demand for surgery and decrease the demand for radiotherapy and chemotherapy. The magnitude of this shift in treatment will depend on the number of screened individuals, which will decrease over time⁷ because younger birth cohorts smoke less.⁸

The benefits of early detection depend on the availability of adequate treatment. Hence, assessing the demand for treatment and planning for sufficient manpower are essential to successfully implementing screening. In screening programs where capacity (eg, for follow-up) has been limited, program implementation has been done gradually to take this into account.⁹ Therefore, the aim of the current study was to project the treatment capacity required for the full-scale

Corresponding author: Erik F. Blom, MD, Department of Public Health, Erasmus MC University Medical Center Rotterdam, P.O. Box 2040, Internal Postal Address Na-2401, 3000CA Rotterdam, the Netherlands; e.f.blom@erasmusmc.nl

¹Department of Public Health, Erasmus MC University Medical Center Rotterdam, Rotterdam, the Netherlands; ²Division of Pulmonary & Critical Care Medicine, University of Michigan, Ann Arbor, Michigan.

For this project, Erik F. Blom, MD, had a guest affiliation with the Division of Pulmonary & Critical Care Medicine, University of Michigan, Ann Arbor, Michigan. Additional supporting information may be found in the online version of this article.

DOI: 10.1002/cncr.32026, **Received:** August 27, 2018; **Revised:** January 10, 2019; **Accepted:** January 29, 2019; **Published online** February 27, 2019 in Wiley Online Library (wileyonlinelibrary.com)

implementation of LDCT screening for lung cancer in the United States.

MATERIALS AND METHODS

Simulation of Lung Cancer Incidence Rates

In this study, we used the Microsimulation Screening Analysis Lung (MISCAN-Lung) model, which simulates individual life histories in the presence and absence of screening to project benefits and harms of different screening policies on a population level. This study was deemed exempt by the Institutional Review Board at the University of Michigan. MISCAN-Lung has been calibrated to individual-level incidence and mortality data from the NLST and the Prostate, Lung, Colorectal, and Ovarian Cancer Screening Trial.^{10,11} It accounts for differences in smoking behavior across birth cohorts by incorporating the National Cancer Institute's Smoking History Generator.⁸ The model has been previously used to inform the USPSTF on the LDCT screening scenario with the most favorable ratio of benefits and harms for a 1950 US birth cohort.⁵ Also, it has been used to identify the most cost-effective scenario for Cancer Care Ontario.¹²

In the current analysis, we first simulated a scenario without lung cancer screening. Then, we simulated 3 scenarios with screening: 1) using the USPSTF recommendations (ie, annual screening of current smokers and former smokers who quit fewer than 15 years ago, aged 55-80 years, with a smoking history of at least 30 pack-years),³ 2) using the CMS recommendations (ie, stopping screening 3 years earlier than the USPSTF scenario at the age of 77 years),⁴ and 3) using the most cost-effective policy from a recent cost-effectiveness analysis for Cancer Care Ontario (ie, annual screening of current smokers and former smokers who quit fewer than 10 years ago, aged 55-75 years, with a smoking history of at least 40 pack-years).¹²

The timeframe for this study was 2015-2040. We assumed that screening started in 2018 because the current uptake of lung cancer screening in the United States is low.¹³ We simulated the full range of birth-year cohorts from 1916 (ie, patients aged 99 years in 2015) through 2005 (ie, patients aged 35 years in 2040). We assumed that no lung cancer occurred under the age of 35 years. We further assumed that the maximum age in the population was 99 years.

Treatment Capacity Requirements

For each screening scenario, we adjusted the year-, sex-, age-, stage-, and histology-specific lung cancer incidence rates estimated by MISCAN-Lung to the projected US population by using the US Census

National Population Projections.¹⁴ Therefore, we accounted for growth and aging of the population. Next, we obtained lung cancer treatment patterns from the National Cancer Database (NCDB) participant user file for 440,566 lung cancer cases diagnosed between 2010 and 2014. The NCDB, established in 1989, is a nationwide, facility-based, comprehensive clinical surveillance resource oncology data set that currently captures 70% of all newly diagnosed malignancies in the United States annually from more than 1500 affiliated facilities. The NCDB is a joint project of the Commission on Cancer of the American College of Surgeons and the American Cancer Society. An analysis of individual-level NCDB data was performed on site at the University of Michigan Medical School. Details of the analysis of the NCDB data, including case selection and data cleaning, are provided as supplementary methods in the supporting information. In short, we obtained the sex-, age-, stage-, and histology-specific proportions of patients with lung cancer who received surgery, radiotherapy, chemotherapy, and any therapy as first-course treatment. Because treatment patterns among patients with lung cancer in the NCDB remained stable over time (see Supporting Fig. 1), the mean treatment proportions across years 2010-2014 were used in this study (see Supporting Table 1). For each scenario that we simulated, we then calculated the required lung cancer treatment capacity by multiplying the year-, sex-, age-, stage-, and histology-specific Census-adjusted incidence from MISCAN-Lung with the mean sex-, age-, stage-, and histology-specific treatment proportions from the NCDB. In the base-case analysis, the same treatment proportions were applied to screen-detected cases and clinically detected cases. Because screen-detected cases may have less comorbidity than clinically detected cases, a sensitivity analysis was also performed that used stage-specific treatment proportions from the LDCT arm of the NLST for screen-detected cases (see Supporting Table 2).²

Effect of Adherence

On the basis of the results of an implementation study of lung cancer screening in the US Veterans Affairs Administration, we assumed a constant screening adherence of 50% for the base-case analysis.¹⁵ Another study in the Stanford Health Care system reported an adherence level of 60%.¹⁶ That study also reported national adherence rates of 69% for colorectal cancer screening, 79% for breast cancer screening, and 75% for cervical cancer screening in the United States. We

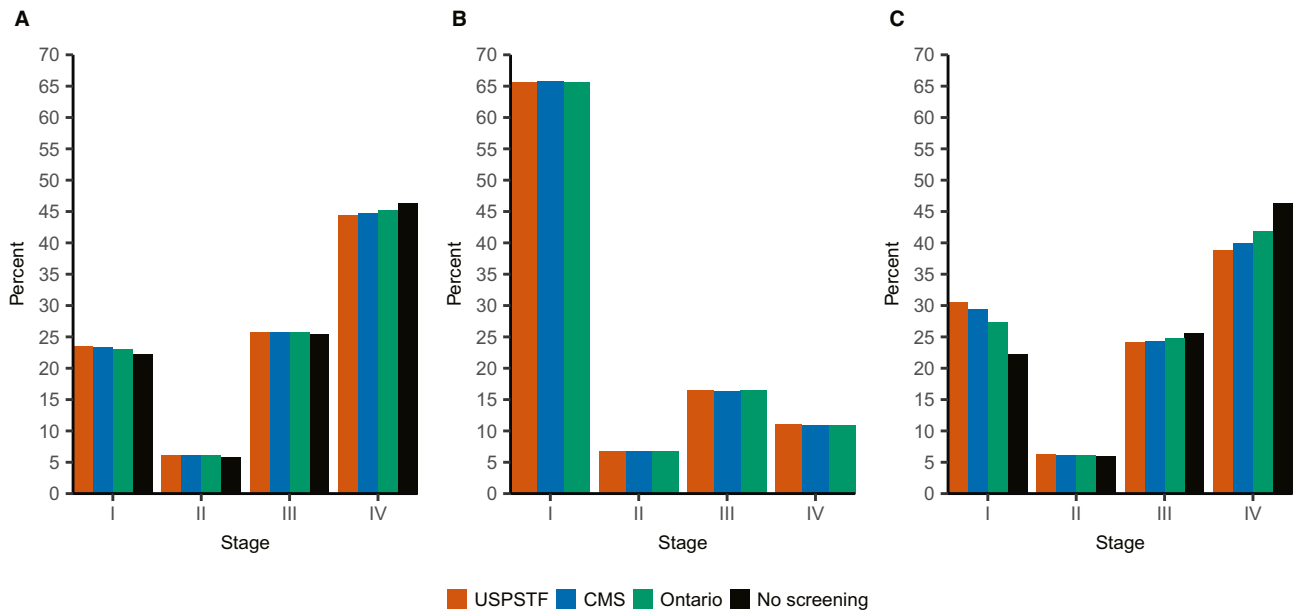


Figure 1. Distribution of stages at diagnosis for (A) clinically detected lung cancer cases, (B) screen-detected cases, and (C) all cases in the United States between 2015 and 2040 in the absence of low-dose computed tomography screening and for the 3 screening policies implemented in 2018. All policies assumed a constant 50% adherence to screening. CMS indicates Centers for Medicare and Medicaid Services recommendations (annual screening of current smokers and former smokers who quit fewer than 15 years ago, aged 55-77 years, with a smoking history of at least 30 pack-years); Ontario, most cost-effective policy from a study for Cancer Care Ontario (annual screening of current smokers and former smokers who quit fewer than 10 years ago, aged 55-75 years, with a smoking history of at least 40 pack-years); USPSTF, US Preventive Services Task Force recommendations (annual screening of current smokers and former smokers who quit fewer than 15 years ago, aged 55-80 years, with a smoking history of at least 30 pack-years).

assume that it is unlikely that adherence to lung cancer screening will surpass that of existing screening programs in the near future. Therefore, we assessed the effect of constant adherence levels of 20%, 35%, 65%, and 80% in a sensitivity analysis. In a second sensitivity analysis, we assessed the effect of a linear buildup of screening adherence from 5% in 2018 to a plateau of 50% from 2027 onward.

Statistical Analysis

All analyses were performed with the MISCAN-Lung model and R software (version 3.4.1).¹⁷

RESULTS

Simulation of Lung Cancer Incidence Rates

In 2018, the projected number of screening-eligible persons in the US population would be 11,816,790 for the USPSTF scenario, 11,258,937 for the CMS scenario, and 6,505,609 for the Ontario scenario (Supporting Fig. 2). By 2023, screening eligibility would decrease to 10,192,541 (USPSTF), 9,574,244 (CMS), and 5,548,430 (Ontario). By 2040, 4,710,017 persons would be eligible in the USPSTF scenario, 4,145,176 would be eligible

in the CMS scenario, and 2,322,388 would be eligible according to the Ontario criteria.

In the absence of screening, annual Census-adjusted lung cancer incidence would increase to 215,392 cases by 2033 and would then gradually decrease (see Supporting Fig. 3). The implementation in 2018 of a screening program with a constant 50% adherence would lead to an immediate peak in incidence in comparison with no screening. This peak would be highest for the USPSTF scenario ($n = 253,938$), which would be followed by the CMS scenario ($n = 247,556$) and the Ontario scenario ($n = 233,841$). With a gradual buildup of adherence, this peak would be lower but last longer (Supporting Fig. 4).

Over the entire study period, the cumulative number of lung cancer cases would be 5,525,593 for the USPSTF scenario, 5,495,049 for the CMS scenario, 5,462,657 for the Ontario scenario, and 5,402,854 for the no-screening scenario (Supporting Table 3). The proportions of screen-detected cases would be 16.8% (USPSTF), 14.3% (CMS), and 10.1% (Ontario). In the absence of screening, 22.2% of clinically detected cases would be diagnosed at stage I, 5.9% would be diagnosed at stage II, 25.5% would be diagnosed at stage III,

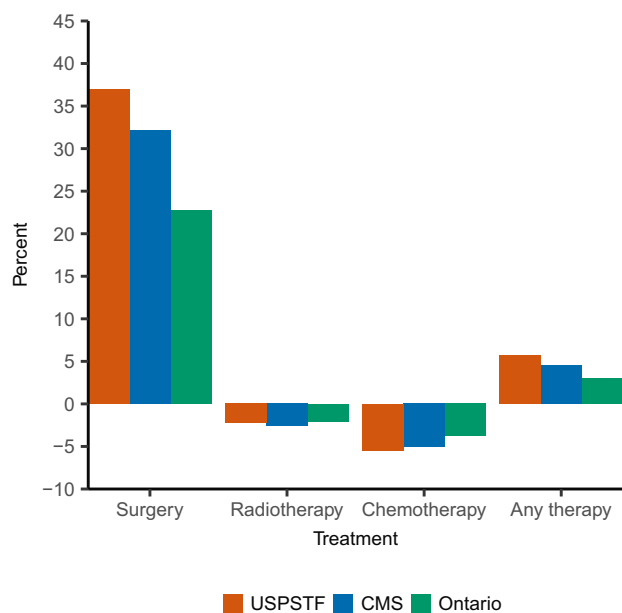


Figure 2. Cumulative changes in demand for lung cancer therapy in the United States between 2015 and 2040 with the implementation of low-dose computed tomography screening for lung cancer in 2018. The data are expressed as cumulative percentage changes in comparison with no screening. All policies assumed a constant 50% adherence to screening. CMS indicates Centers for Medicare and Medicaid Services recommendations (annual screening of current smokers and former smokers who quit fewer than 15 years ago, aged 55-77 years, with a smoking history of at least 30 pack-years); Ontario, most cost-effective policy from a study for Cancer Care Ontario (annual screening of current smokers and former smokers who quit fewer than 10 years ago, aged 55-75 years, with a smoking history of at least 40 pack-years); USPSTF, US Preventive Services Task Force recommendations (annual screening of current smokers and former smokers who quit fewer than 15 years ago, aged 55-80 years, with a smoking history of at least 30 pack-years).

and 46.3% would be diagnosed at stage IV (see Fig. 1A). Among screen-detected cases in the USPSTF scenario, 65.6% would be diagnosed at stage I, 6.8% would be diagnosed at stage II, 16.5% would be diagnosed at stage III, and 11.1% would be diagnosed at stage IV (see Fig. 1B). For both clinically detected and screen-detected cases, differences in stage distributions across scenarios were minimal. Overall, the proportion of cases diagnosed at stage I would be 30.6% in the USPSTF scenario, 29.4% in the CMS scenario, 27.3% in the Ontario scenario, and 22.2% without screening (see Fig. 1C). Conversely, the proportion of cases diagnosed at stage IV would decrease because of screening: from 46.3% without screening to 38.9% (USPSTF), 40.0% (CMS), and 41.8% (Ontario).

Treatment Capacity Requirements

Figure 2 shows the changes in lung cancer therapy due to the implementation of LDCT screening in 2018. The main change would be a large cumulative increase in the demand for lung cancer surgery. At the base-case adherence of 50%, the demand for lung cancer surgery would increase in comparison with no screening by 37.0% (USPSTF), 32.1% (CMS), and 22.8% (Ontario). However, the demand for radiotherapy would decrease by 2.2% (USPSTF), 2.6% (CMS), and 2.1% (Ontario). The demand for chemotherapy would decrease by 5.4% (USPSTF), 5.1% (CMS), and 3.8% (Ontario). Finally, the number of patients who would receive any therapy would increase by 5.7% (USPSTF), 4.5% (CMS), and 3.0% (Ontario). If we assume that screen-detected cases would receive stage-specific treatment as reported in the NLST, the increase in surgery in comparison with no screening would be 55.3% (USPSTF), 46.3% (CMS), and 32.3% (Ontario; Supporting Fig. 5). The demand for radiotherapy would decrease by 7.4% (USPSTF), 6.8% (CMS), and 5.1% (Ontario). Chemotherapy demand would decrease by 4.3% (USPSTF), 4.7% (CMS), and 3.7% (Ontario). Finally, the demand for any therapy would increase by 7.6% (USPSTF), 5.9% (CMS), and 3.9% (Ontario).

Figure 3 shows the absolute annual number of lung cancer treatments required between 2015 and 2040 for the base-case scenario. Supporting Table 4 additionally shows the percentage change in comparison with no screening in 2018, 2023, 2028, and 2040. In the absence of screening, the annual required number of lung cancer surgeries would remain relatively constant: 37,964 in 2018, 38,903 in 2023, 38,876 in 2028, and 34,021 in 2040. Implementing the USPSTF recommendations would increase demand for lung cancer surgery in comparison with no screening by 96.1% in 2018, 46.0% in 2023, 38.3% in 2028, and 24.9% in 2040. In the CMS scenario, the increases in comparison with no screening would be 87.5% (2018), 41.2% (2023), 33.0% (2028), and 19.7% (2040). Finally, implementing the Ontario recommendations would increase demand in comparison with no screening by 64.5% in 2018, 30.1% in 2023, 23.7% in 2028, and 13.1% in 2040.

In the absence of screening, the annual number of patients with lung cancer requiring radiotherapy would increase from 81,802 in 2018 to 84,378 in 2023 and 85,242 in 2028, after which it would gradually decrease to 81,219 in 2040. Implementing the USPSTF recommendations would first increase demand for radiotherapy by 20.7% in 2018. However, demand would decrease in

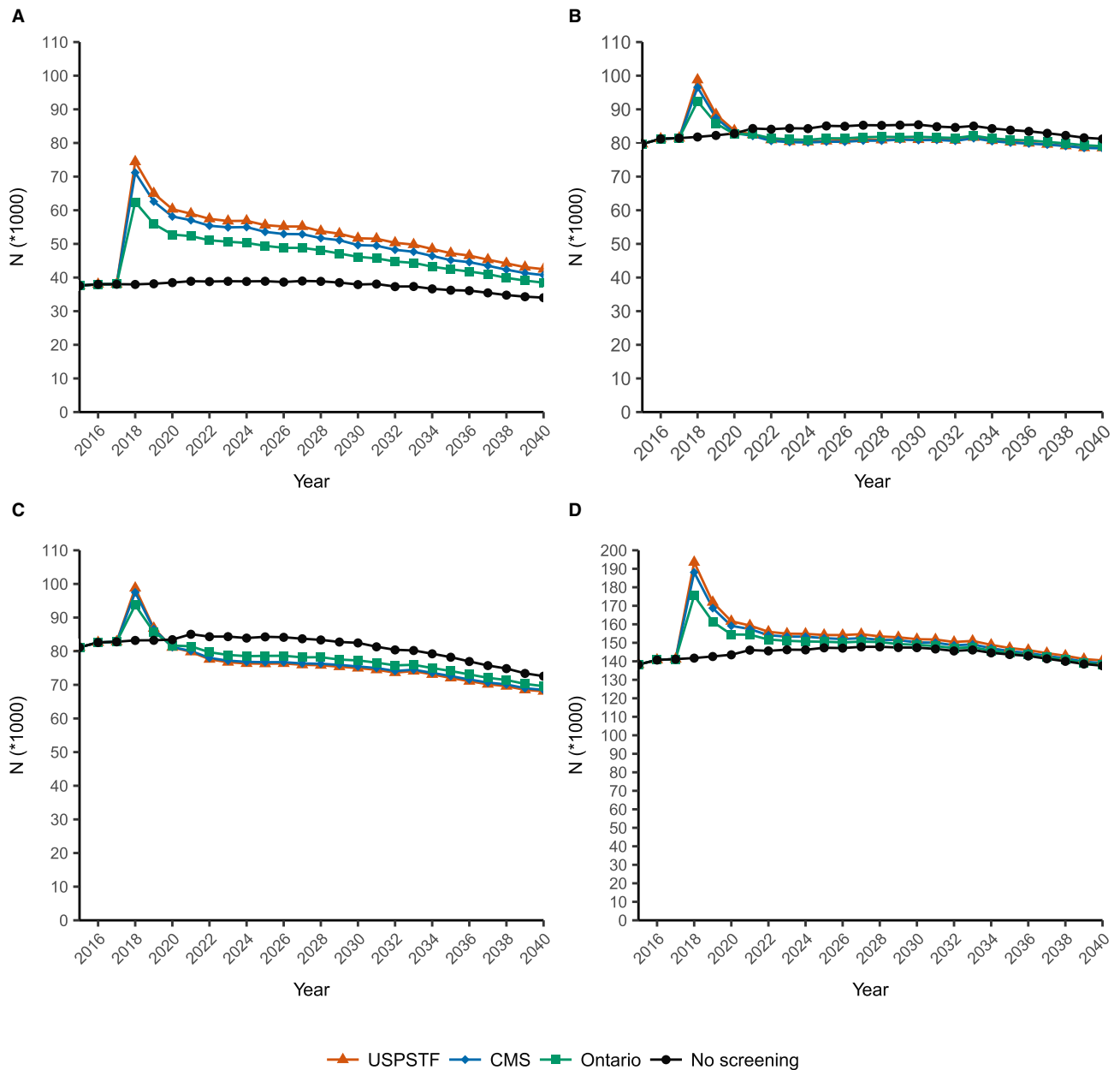


Figure 3. Absolute annual number of patients with lung cancer in the United States requiring (A) surgery, (B) radiotherapy, (C) chemotherapy, and (D) any therapy with the implementation of low-dose computed tomography screening for lung cancer in 2018. All policies assumed a constant 50% adherence to screening. CMS indicates Centers for Medicare and Medicaid Services recommendations (annual screening of current smokers and former smokers who quit fewer than 15 years ago, aged 55-77 years, with a smoking history of at least 30 pack-years); Ontario, most cost-effective policy from a study for Cancer Care Ontario (annual screening of current smokers and former smokers who quit fewer than 10 years ago, aged 55-75 years, with a smoking history of at least 40 pack-years); USPSTF, US Preventive Services Task Force recommendations (annual screening of current smokers and former smokers who quit fewer than 15 years ago, aged 55-80 years, with a smoking history of at least 30 pack-years).

comparison with no screening shortly after that by 4.7% in 2023, 5.1% in 2028, and 3.3% in 2040. Results for the CMS and Ontario scenarios were similar, although differences in comparison with no screening were less pronounced.

We found a similar pattern for the number of cases that required chemotherapy. In the absence of screening, the demand for chemotherapy would be 83,221 in 2018, 84,351 in 2023, 83,366 in 2028, and 72,586 in 2040. In the USPSTF scenario, demand would first increase by

18.7% in 2018, and this would be followed by relative decreases in comparison with no screening of 9.0% in 2023 and 2028 and 6.2% in 2040.

Finally, the number of lung cancer cases that would receive any therapy in the no-screening scenario would increase from 141,751 in 2018 to 146,288 in 2023 and 147,815 in 2028. Then, it would decrease to 137,607 in 2040. For each screening scenario, the number of cases receiving any therapy peaked in 2018: +36.5% (USPSTF), +32.7% (CMS), and +23.8% (Ontario) in comparison with no screening. The difference in comparison with no screening would then become smaller within the 5 years after implementation. For the USPSTF scenario, the increase in comparison with no screening would be 5.9% in 2023, 3.8% in 2028, and 2.1% in 2040.

Effect of Adherence

Figure 4 shows the effect of different levels of constant screening adherence on the number of patients requiring lung cancer surgery for the USPSTF scenario. In 2018, the required surgical capacity would be 52,619 (20% adherence), 63,623 (35%), 74,437 (50%), 85,312 (65%), and 96,121 (80%). If we consider 20% adherence as the lower limit and 80% adherence as the upper limit, the number of surgeries would range from 47,790 to 62,849 in 2023, from 46,213 to 58,752 in 2028, and from 38,259 to 45,172 in 2040. Results for the CMS and Ontario scenarios are shown in Supporting Figures 6 and 7, respectively.

Figure 5 and Supporting Table 5 show the effect of a linear buildup of screening adherence from 5% in 2018 to a constant 50% from 2027 onward. In 2018, the increases in surgical demand in comparison with no screening would be 9.6% (USPSTF), 8.7% (CMS), and 7.9% (Ontario). In 2023, the increases would be 38.3% (USPSTF), 34.2% (CMS), and 30.4% (Ontario). In 2028, the increases would be 42.0% (USPSTF), 36.1% (CMS), and 31.6% (Ontario). Finally, in 2040, the increases would be 24.4% (USPSTF), 19.4% (CMS), and 16.1% (Ontario). For the USPSTF scenario, the demand for radiotherapy would change in comparison with no screening by +2.1% (in year 2018), +1.7% (2023), -2.9% (2028), and -3.4% (2024). Demand for chemotherapy would change by +1.9% (2018), -0.6% (2023), -6.8% (2028), and -6.2% (2040). Finally, demand for any therapy would change by +3.7% (2018), +9.3% (2023), +6.3% (2028), and +1.9% (2040). Changes in the demand for radiotherapy, chemotherapy, and any therapy for the CMS and Ontario scenarios were similar to the USPSTF scenario but less pronounced.

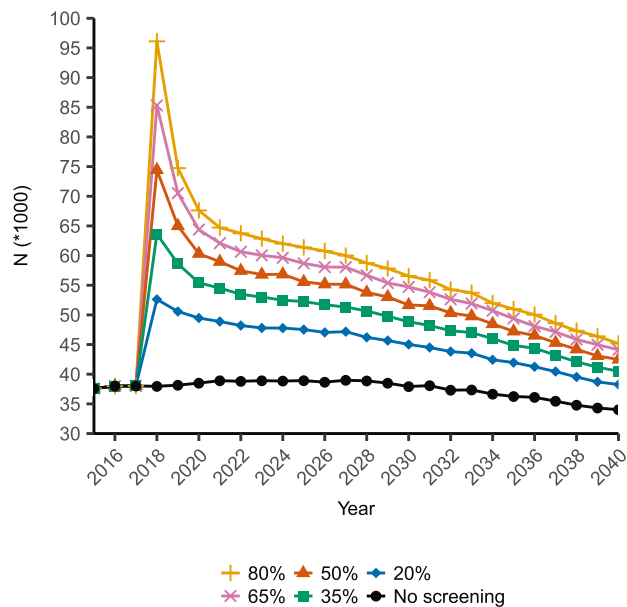


Figure 4. Absolute annual number of patients with lung cancer in the United States requiring surgery with the implementation of low-dose computed tomography screening for lung cancer in 2018 using the US Preventive Services Task Force criteria at different constant screening adherence levels. USPSTF indicates US Preventive Services Task Force recommendations (annual screening of current smokers and former smokers who quit fewer than 15 years ago, aged 55-80 years, with a smoking history of at least 30 pack-years).

DISCUSSION

The aim of this study was to quantify the expected treatment capacity required for the full-scale implementation of LDCT screening for lung cancer in the United States.

Simulation of Lung Cancer Incidence Rates

The introduction of screening caused an immediate peak in lung cancer incidence. This initial peak can be explained by the lead time of screen-detected preclinical cases, which would have otherwise been clinically detected later in time.

We found that screening caused a shift in the stage at diagnosis from stage IV to stage I. This stage shift was more pronounced for scenarios with less stringent eligibility criteria (ie, stage shift for USPSTF > stage shift for CMS > stage shift for Ontario). This may be explained by the higher number (and proportion) of screen-detected cases in those scenarios (see Supporting Table 3). In the NLST, which followed participants from 2002 to 2009, the proportion of stage I lung cancers in the LDCT arm was 50.0%.² This is much higher than the 30.6% that we found in the USPSTF

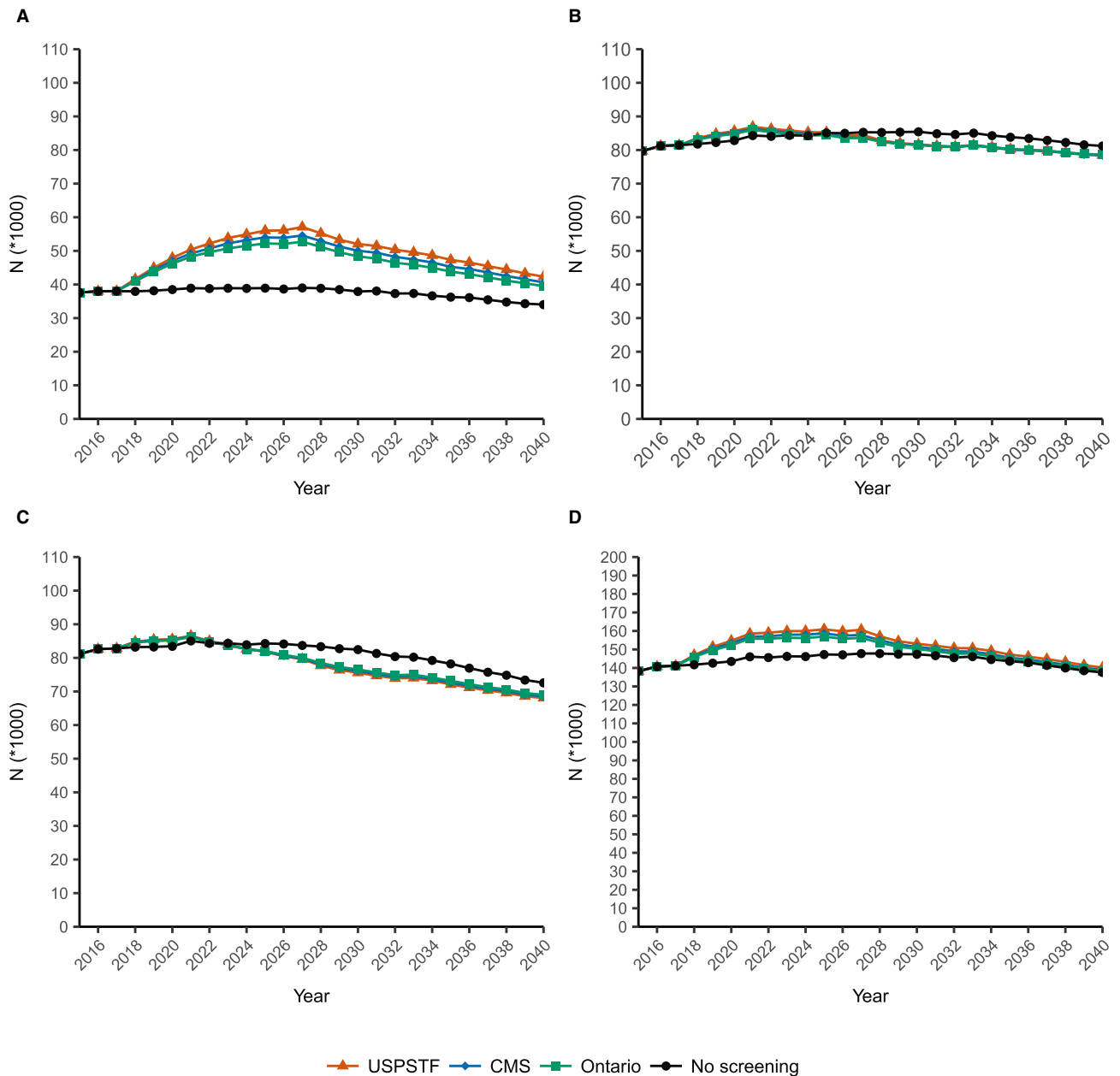


Figure 5. Absolute annual number of patients with lung cancer in the United States requiring (A) surgery, (B) radiotherapy, (C) chemotherapy, and (D) any therapy with the implementation of low-dose computed tomography screening for lung cancer in 2018. All policies assume an adherence level of 5% in 2018 with an annual increase of 5 percentage points until a constant adherence of 50% is reached in 2027. CMS indicates Centers for Medicare and Medicaid Services recommendations (annual screening of current smokers and former smokers who quit fewer than 15 years ago, aged 55-77 years, with a smoking history of at least 30 pack-years); Ontario, most cost-effective policy from a study for Cancer Care Ontario (annual screening of current smokers and former smokers who quit fewer than 10 years ago, aged 55-75 years, with a smoking history of at least 40 pack-years); USPSTF, US Preventive Services Task Force recommendations (annual screening of current smokers and former smokers who quit fewer than 15 years ago, aged 55-80 years, with a smoking history of at least 30 pack-years).

scenario. This difference may be explained by 3 factors. Most importantly, our simulation of the general population included all lung cancer cases, not just those detected in the screen-eligible population. Second, we

conducted our model under assumptions of much lower (and perhaps more realistic) screening adherence (50%) than was achieved in the NLST (>90%).² Third, our results were projected from 2015 to 2040 and, therefore,

included younger cohorts than the NLST. A previous MISCAN-Lung simulation of the 1950 cohort found that 48% of lung cancer cases were diagnosed at stage I or II when the USPSTF recommendations were implemented.⁵ In our current analysis, this proportion was only 36.9%. This may be explained by declining smoking trends for younger birth cohorts,⁸ which cause fewer individuals to be eligible for screening.⁷ These findings underline the necessity of modeling multiple birth cohorts when one is assessing lung cancer interventions over a time period.

Treatment Capacity Requirements

We found that the implementation of lung cancer screening would lead to a substantial increase in the demand for lung cancer surgery. A previous study that investigated the radiological capacity requirements for implementing lung cancer screening in the United States defined capacity constraints as “a greater than 5% and (alternatively) greater than 25% projected increase in scans.”¹⁸ If we apply the 5% increase criterion to our base-case estimates, surgical capacity would be restrained in every year, for each scenario, and at each adherence level. If we apply the 25% increase criterion to our base-case estimates, capacity would be restrained for each scenario and adherence level in 2018. By 2023, capacity would be restrained for the USPSTF and CMS scenarios with $\geq 35\%$ adherence and for the Ontario scenarios with $\geq 50\%$ adherence. Finally, by 2040, capacity would be restrained only for the USPSTF scenarios with $\geq 65\%$ adherence and for the CMS scenario with 80% adherence. With the treatment proportions from the NLST for screen-detected cases, surgical capacity constraints would be even more pronounced. However, because the NLST was conducted under selective and controlled circumstances, these estimates should be considered an upper bound. Finally, if we applied the 5% criterion to the results of the sensitivity analysis with a gradual buildup of adherence, surgical capacity would still be restrained in each year for each scenario. If we applied the 25% increase criterion to the same analysis, capacity would not be restrained in 2018. However, capacity would still be restrained in 2023 and 2028 for each scenario.

Thoracic surgeons have lower operative and postoperative mortality rates for lung cancer surgery than general surgeons.^{19,20} Consequently, guidelines state that thoracic surgeons should be involved in treating screen-detected lung cancer.^{21,22} However, earlier research projected that the future demand for thoracic surgeons would increase

while the supply would decline.²³ Without taking into account lung cancer screening, Moffatt-Bruce et al²⁴ reported that by 2035 the caseload per thoracic surgeon may increase by 121%. In addition, Edwards et al²⁵ reported that implementing LDCT lung cancer screening in Canada in 2014 could increase the number of operable (ie, stage I and II) lung cancer cases per thoracic surgeon by 19.8% in 2030. However, our analysis of NCDB data indicates that many stage I and II NSCLC cases in fact do not receive surgery. Nevertheless, these studies provide indications that the current workforce of thoracic surgeons may not be able to cope with the additional demand caused by lung cancer screening.

Residency training of additional thoracic surgeons takes on average 8.7 years.²⁶ However, the projected surgical demand peaked in the first 5 years after the implementation of screening. This peak would be more spread out over time with a gradual buildup of adherence. However, delaying the full-scale implementation of lung cancer screening may reduce the potential health benefits because smoking trends have been declining.⁷ Therefore, our data suggest that training of additional thoracic surgeons should start as soon as possible. In the meantime, a careful assessment and allocation of available capacity should be undertaken to ensure the maximum benefits of lung cancer screening.

We found that the overall reduction in the demand for radiotherapy (−2.2%) and chemotherapy (−5.4%) was smaller than the overall increase in the demand for surgery (+37.0%). This is due to 3 factors. First, patients could receive multiple treatments. Second, radiotherapy and chemotherapy demand first increased because of the large incidence peak and then decreased. Third, the demand for surgery in the absence of screening was much lower than the demand for radiotherapy and chemotherapy. The initial peak in the demand for radiotherapy would exceed a 25% increase in comparison with no screening only by 2018 and only for the base-case USPSTF scenarios with $\geq 65\%$ adherence and for the CMS scenario with 80% adherence. Similarly, the initial increase in the demand for chemotherapy in comparison with no screening would surpass the 25% mark only in 2018 for the base-case USPSTF and CMS scenarios with 80% adherence. Therefore, it is unlikely that the implementation of lung cancer screening will cause a major shortage of radiation oncology or chemotherapy services.

Limitations

There are several potential limitations to the current study. First, earlier research has identified treatment

disparities among US patients with lung cancer by race²⁷ and insurance status.²⁸ Although we implicitly accounted for these disparities by using the NCDB data, which cover 70% of incident cancer cases in the United States, MISCAN-Lung currently does not explicitly model the effects of these variables.

Second, our model is currently unable to estimate lung cancer incidence on a state level, whereas lung cancer incidence rates have been shown to vary by state.²⁹ This should be the subject of future research so that policy makers can plan treatment capacity on a local level. Policy makers should also note that simply increasing the number of trained thoracic surgeons may not be sufficient if patients at the highest risk for lung cancer are also encumbered by geographical (distance) or financial barriers (health insurance) to access.

Third, we have not modeled recurrent tumors. Also, the NCDB records only the first course of therapy, which is defined as all methods of treatment recorded in the treatment plan and administered to the patient before disease progression or recurrence. This might lead to an underestimation of the total number of treatments required for the implementation of lung cancer screening.

Finally, because we projected demand in the future, there may be some future developments that could alter our estimates. For instance, we could not project the demand for targeted or immunotherapy agents because these are very recent developments. Furthermore, although current guidelines recommend stereotactic body radiotherapy only for patients with medically inoperable early-stage NSCLC,⁶ there is an ongoing debate on its appropriateness in operable patients.^{30,31} Therefore, the proportion of early-stage cases that require radiotherapy could increase in the future. Two other developments that may possibly alter our estimates are the introduction of risk models to select individuals for screening and the use of nodule management strategies such as Lung-RADS. Finally, if future developments allow clinicians to distinguish indolent screen-detected cancers that would never cause symptoms from more aggressive cancers, overdiagnosis could decrease. In turn, this could decrease treatment demand.

In conclusion, we show that full-scale implementation of lung cancer screening in the United States will cause a major increase in the demand for lung cancer surgery, with a peak within the first 5 years. The current workforce of thoracic surgeons may not be able to cope with this increased demand. The question is whether this could jeopardize the benefits of screening. Although a gradual buildup of adherence could spread the peak in surgical demand over time, a delayed implementation

of screening may reduce the potential health benefits. Therefore, implementation of lung cancer screening can be done only with a careful assessment and allocation of surgical capacity.

FUNDING SUPPORT

This work was funded by grant 1U01CA199284-01 from the National Cancer Institute as part of the Cancer Intervention and Surveillance Modeling Network. The National Cancer Institute had no involvement in the study design, analysis, or interpretation of data; in the writing of the report; or in the decision to submit the article for publication.

CONFLICT OF INTEREST DISCLOSURES

Harry J. de Koning, Kevin ten Haaf, and Erik F. Blom are members of the Lung Working Group of the Cancer Intervention and Surveillance Modeling Network (grant 1U01CA199284-01 from the National Cancer Institute). de Koning is the principal investigator of the Dutch-Belgian Lung Cancer Screening Trial (the Netherlands-Leuven Longkanker Screenings Onderzoek [NELSON] trial). ten Haaf and Blom are researchers affiliated with the NELSON trial. de Koning and ten Haaf received a grant from the University of Zurich to assess the cost-effectiveness of computed tomography (CT) lung cancer screening in Switzerland. de Koning took part in a 1-day advisory meeting on biomarkers organized by MD Anderson/Health Sciences during the 16th World Conference on Lung Cancer. ten Haaf was an invited speaker at the 4th International Association for the Study of Lung Cancer (IASLC) Strategic Screening Advisory Committee (SSAC) CT screening workshop on Saturday, December 3, 2016, before the IASLC World Conference on Lung Cancer in Vienna. Travel expenses in part were paid by the IASLC SSAC Organizing Committee. ten Haaf was an invited speaker at the 19th IASLC World Conference on Lung Cancer in Toronto. Travel expenses in part were paid by the IASLC. de Koning and ten Haaf were involved in the Cancer Care Ontario Health Technology Assessment Study for CT Lung Cancer Screening in Canada. Douglas A. Arenberg was part of a paid medical advisory board for Nucleix, which was convened at the IASLC World Conference on Lung Cancer in Vienna, and he is a member of both the IASLC Smoking Cessation and Tobacco Control Committee and the American College of Chest Physicians Lung Cancer Guidelines Executive Committee.

AUTHOR CONTRIBUTIONS

Erik F. Blom: Conceptualization, data curation, formal analysis, investigation, methodology, software, validation, visualization, writing—original draft preparation, and writing—review and editing. **Kevin ten Haaf:** Conceptualization, formal analysis, methodology, software, supervision, validation, and writing—review and editing. **Douglas A. Arenberg:** Conceptualization, methodology, and writing—review and editing. **Harry J. de Koning:** Conceptualization, funding acquisition, methodology, supervision, and writing—review and editing.

REFERENCES

1. Siegel RL, Miller KD, Jemal A. Cancer statistics, 2018. *CA Cancer J Clin*. 2018;68:7-30.
2. Aberle DR, Adams AM, Berg CD, et al. Reduced lung-cancer mortality with low-dose computed tomographic screening. *N Engl J Med*. 2011;365:395-409.
3. Moyer VA. Screening for lung cancer: U.S. Preventive Services Task Force recommendation statement. *Ann Intern Med*. 2014; 160:330-338.
4. Centers for Medicare and Medicaid Services. Decision memo for screening for lung cancer with low dose computed tomography (LDCT) (CAG-00439N). <https://www.cms.gov/medicare-coverage-database/details/nca-decision-memo.aspx?NCAId=274>. Accessed July 7, 2018.
5. de Koning HJ, Meza R, Plevritis SK, et al. Benefits and harms of computed tomography lung cancer screening strategies: a comparative

- modeling study for the U.S. Preventive Services Task Force. *Ann Intern Med.* 2014;160:311-320.
6. National Comprehensive Cancer Network. Clinical Practice Guidelines in Oncology: Non–Small Cell Lung Cancer Version 5.2017. https://www.nccn.org/professionals/physician_gls/pdf/nscl.pdf. Accessed April 20, 2017.
 7. Criss SD, Sheehan DF, Palazzo L, Kong CY. Population impact of lung cancer screening in the United States: projections from a microsimulation model. *PLoS Med.* 2018;15:e1002506.
 8. Holford TR, Levy DT, McKay LA, et al. Patterns of birth cohort-specific smoking histories, 1965-2009. *Am J Prev Med.* 2014;46:e31-37.
 9. van Hees F, Zauber AG, van Veldhuizen H, et al. The value of models in informing resource allocation in colorectal cancer screening: the case of the Netherlands. *Gut.* 2015;64:1985-1997.
 10. Meza R, ten Haaf K, Kong CY, et al. Comparative analysis of 5 lung cancer natural history and screening models that reproduce outcomes of the NLST and PLCO trials. *Cancer.* 2014;120:1713-1724.
 11. ten Haaf K, van Rosmalen J, de Koning HJ. Lung cancer detectability by test, histology, stage, and gender: estimates from the NLST and the PLCO trials. *Cancer Epidemiol Biomarkers Prev.* 2015;24:154-161.
 12. ten Haaf K, Tammemagi MC, Bondy SJ, et al. Performance and cost-effectiveness of computed tomography lung cancer screening scenarios in a population-based setting: a microsimulation modeling analysis in Ontario, Canada. *PLoS Med.* 2017;14:e1002225.
 13. Jemal A, Fedewa SA. Lung cancer screening with low-dose computed tomography in the United States—2010 to 2015. *JAMA Oncol.* 2017;3:1278-1281.
 14. US Census Bureau. 2014 National Population Projections Tables. <https://www.census.gov/data/tables/2014/demo/popproj/2014-summary-tables.html>. Released December 2014. Accessed January 1, 2018.
 15. Kinsinger LS, Anderson C, Kim J, et al. Implementation of lung cancer screening in the Veterans Health Administration. *JAMA Intern Med.* 2017;177:399-406.
 16. Duong DK, Shariff-Marco S, Cheng I, et al. Patient and primary care provider attitudes and adherence towards lung cancer screening at an academic medical center. *Prev Med Rep.* 2017;6:17-22.
 17. R: A Language and Environment for Statistical Computing [computer program]. Version 3.4.1. Vienna, Austria: R Foundation for Statistical Computing; 2017.
 18. Smiellauskas F, MacMahon H, Salgia R, Shih YC. Geographic variation in radiologist capacity and widespread implementation of lung cancer CT screening. *J Med Screen.* 2014;21:207-215.
 19. Goodney PP, Lucas FL, Stukel TA, Birkmeyer JD. Surgeon specialty and operative mortality with lung resection. *Ann Surg.* 2005;241:179-184.
 20. von Meyenfeldt EM, Gooiker GA, van Gijn W, et al. The relationship between volume or surgeon specialty and outcome in the surgical treatment of lung cancer: a systematic review and meta-analysis. *J Thorac Oncol.* 2012;7:1170-1178.
 21. Jaklitsch MT, Jacobson FL, Austin JH, et al. The American Association for Thoracic Surgery guidelines for lung cancer screening using low-dose computed tomography scans for lung cancer survivors and other high-risk groups. *J Thorac Cardiovasc Surg.* 2012;144:33-38.
 22. Pedersen JH, Rzyman W, Veronesi G, et al. Recommendations from the European Society of Thoracic Surgeons (ESTS) regarding computed tomography screening for lung cancer in Europe. *Eur J Cardiothorac Surg.* 2017;51:411-420.
 23. Grover A, Gorman K, Dall TM, et al. Shortage of cardiothoracic surgeons is likely by 2020. *Circulation.* 2009;120:488-494.
 24. Moffatt-Bruce S, Crestanello J, Way DP, Williams TE Jr. Providing cardiothoracic services in 2035: signs of trouble ahead. *J Thorac Cardiovasc Surg.* 2018;155:824-829.
 25. Edwards JP, Datta I, Hunt JD, et al. The impact of computed tomographic screening for lung cancer on the thoracic surgery workforce. *Ann Thorac Surg.* 2014;98:447-452.
 26. Ikonomidis JS. The Society of Thoracic Surgeons Thoracic Surgery Practice and Access Task Force: 2014 workforce report. *Ann Thorac Surg.* 2016;102:2118-2125.
 27. Bach PB, Cramer LD, Warren JL, Begg CB. Racial differences in the treatment of early-stage lung cancer. *N Engl J Med.* 1999;341:1198-1205.
 28. Groth SS, Al-Refaie WB, Zhong W, et al. Effect of insurance status on the surgical treatment of early-stage non–small cell lung cancer. *Ann Thorac Surg.* 2013;95:1221-1226.
 29. Centers for Disease Control and Prevention. U.S. Cancer Statistics Data Visualizations Tool, based on November 2017 submission data (2011-2015). <https://gis.cdc.gov/Cancer/USCS/DataViz.html>. Accessed July 3, 2018.
 30. Senan S, Paul MA, Lagerwaard FJ. Treatment of early-stage lung cancer detected by screening: surgery or stereotactic ablative radiotherapy? *Lancet Oncol.* 2013;14:e270-e274.
 31. Tandberg DJ, Tong BC, Ackerson BG, Kelsey CR. Surgery versus stereotactic body radiation therapy for stage I non–small cell lung cancer: a comprehensive review. *Cancer.* 2018;124:667-678.