

EUR Research Information Portal

The clinical spectrum and incidence of anti-MOG-associated acquired demyelinating syndromes in children and adults

Published in:
Multiple Sclerosis

Publication status and date:
Published: 01/01/2020

DOI (link to publisher):
[10.1177/1352458519845112](https://doi.org/10.1177/1352458519845112)

Document Version
Publisher's PDF, also known as Version of record

Citation for the published version (APA):

Mol, L., Wong, Y. Y., van Pelt - T Gravesteijn, E., Wokke, B., Siepman, D., Neuteboom, R., Hamann, D., & Hintzen, R. (2020). The clinical spectrum and incidence of anti-MOG-associated acquired demyelinating syndromes in children and adults. *Multiple Sclerosis*, 26(7), 806-814. <https://doi.org/10.1177/1352458519845112>

[Link to publication on the EUR Research Information Portal](#)

Terms and Conditions of Use

Except as permitted by the applicable copyright law, you may not reproduce or make this material available to any third party without the prior written permission from the copyright holder(s). Copyright law allows the following uses of this material without prior permission:

- you may download, save and print a copy of this material for your personal use only;
- you may share the EUR portal link to this material.

In case the material is published with an open access license (e.g. a Creative Commons (CC) license), other uses may be allowed. Please check the terms and conditions of the specific license.

Take-down policy

If you believe that this material infringes your copyright and/or any other intellectual property rights, you may request its removal by contacting us at the following email address: openaccess.library@eur.nl. Please provide us with all the relevant information, including the reasons why you believe any of your rights have been infringed. In case of a legitimate complaint, we will make the material inaccessible and/or remove it from the website.

Original Research Paper

The clinical spectrum and incidence of anti-MOG-associated acquired demyelinating syndromes in children and adults

CL de Mol* , YYM Wong*, ED van Pelt, BHA Wokke, TAM Siepman, RF Neuteboom, D Hamann and RQ Hintzen

Abstract

Objectives: The aim of this study was to assess the Dutch nationwide incidence of myelin oligodendrocyte glycoprotein (MOG)-IgG-associated acquired demyelinating syndromes (ADS) and to describe the clinical and serological characteristics of these patients.

Methods: All serum samples for routine diagnostics from February 2014 to December 2017 were sent to the single central reference laboratory for the full-length MOG-IgG cell-based assay (CBA) in the Netherlands. Clinical data from patients known in our National ADS centre were available.

Results: A total of 1414 samples of 1277 patients were received; of these, 92 patients (7%) were MOG-IgG-seropositive. The mean incidence was 0.16/100,000 people, with higher seropositivity in children (0.31/100,000) than in adults (0.13/100,000). In MOG-IgG-positive patients at the National ADS centre (61/92, 66%), the most common presenting phenotype is acute disseminated encephalomyelitis (ADEM, 56%) in children and optic neuritis (ON, 44%) in adults. Relapsing disease occurred in 9/34 (26%) children and 11/27 (41%) adults during median follow-up of 27.5 months. Patients were tested MOG-IgG-positive >200 months after the initial attack, suggesting an extended time to first relapse (TTFR). Longitudinal analysis of MOG-IgG (25/61, 41%) showed that 67% of the monophasic patients remain seropositive and 60% in relapsing patients. Majority of seronegative patients had no relapses (89%).

Conclusion: This nationwide study shows that the overall incidence of MOG-IgG-seropositive disorders is 0.16 per 100,000 people. The distribution over the clinical phenotypes differs between adults and children. Seropositivity can be maintained over years even without clinical activity, while seronegative patients generally had no relapses.

Keywords: Acquired demyelinating syndromes, incidence, anti-MOG antibodies, children, adults, multiple sclerosis variants

Date received: 19 December 2018; revised: 13 March 2019; accepted: 30 March 2019

Introduction

Myelin oligodendrocyte glycoprotein (MOG) is a protein expressed on the surface of myelin sheaths and oligodendrocytes.^{1,2} Anti-MOG antibodies (MOG-IgG) can cause demyelination *in vitro* and induce experimental autoimmune encephalomyelitis.^{3,4} MOG-IgG are found in subtypes of central nervous system (CNS) acquired demyelinating syndromes (ADS) in both adult and paediatric patients, for example, in neuromyelitis optica spectrum disorders (NMOSD),⁵ acute disseminated encephalomyelitis

(ADEM) and in a small subgroup of adult multiple sclerosis (MS) patients.^{6,7} Since the optimisation of the MOG-IgG cell-based assay (CBA), this CBA has become available for routine clinical practice.⁸ Although research on the clinical aspect of MOG-IgG-associated demyelinating syndromes has taken a great leap in the recent years, the incidence figures of MOG-IgG seropositivity in the general population have not yet been investigated. In the Netherlands, one single centralised laboratory performs the diagnostic testing of MOG-IgG.⁶ This provides an unique

Multiple Sclerosis Journal

2020, Vol. 26(7) 806–814

DOI: 10.1177/
1352458519845112

© The Author(s), 2019.



Article reuse guidelines:
sagepub.com/journals-
permissions

Correspondence to:

RQ Hintzen
Department of Neurology,
MS Centre ErasMS, Erasmus
MC, P.O. Box 2040,
3000 CA Rotterdam, The
Netherlands.
r.hintzen@erasmusmc.nl

CL de Mol
YYM Wong
ED van Pelt
BHA Wokke
TAM Siepman
RQ Hintzen
Department of Neurology,
MS Centre ErasMS, Erasmus
MC, Rotterdam, The
Netherlands

RF Neuteboom
Department of Paediatric
Neurology, Erasmus MC,
Rotterdam, The Netherlands

D Hamann
Department of
Immunopathology and
Blood Coagulation, Sanquin
Diagnostic Services,
Amsterdam, The Netherlands

*Authors contributed equally
to this manuscript.

opportunity to gain insight into the nationwide incidence of MOG-IgG seropositivity in both children and adults presenting with CNS demyelinating diseases. In addition, a recent study showed that the distribution of clinical phenotypes differs between MOG-IgG-seropositive children and adults.⁹ We here aim to provide an incidence estimate of MOG-IgG seropositivity in a typical western European country and to describe the clinical and serological characteristics of patients within the MOG-IgG spectrum.

Methods

Patients

The Dutch National ADS centre includes the NMOSD centre, Paediatric MS centre (Rotterdam) and Sanquin diagnostic services (Amsterdam). Basic demographic data (age and treating centre) were available from all serum samples sent in for routine MOG-IgG diagnostics. All serum samples were tested blindly, centrally and in duplicate at Sanquin Diagnostics with a CBA.⁶ All patients were tested negative for anti-aquaporin 4 antibodies (AQP4-IgG). Details on the CBAs will follow in the next section. The CBA for MOG-IgG has become available nationwide since February 2014. Data were collected from four consecutive years (1 February 2014 to 31 December 2017). Samples that were sent in from abroad, mainly from the Dutch Caribbean and Belgium, were excluded from this study ($n = 121$). Incidence rates were calculated as the number of MOG-IgG-seropositive patients per year divided by the number of Dutch inhabitants. This was done for the paediatric and adult patients together, and separately. Population figures were extracted from Statistics Netherlands.¹⁰ To calculate the representative mean incidence figures for MOG-IgG seropositivity, incidence figures of 2015–2017 were used as the incidence of 2014 was exceptionally low compared to the following years.

From the patients known in the National ADS centre and whose serum was tested between February 2014 and December 2017, clinical data were available. Patients were diagnosed with NMOSD or ADEM by the international consensus criteria.^{11,12} Magnetic resonance imaging (MRI) lesions were scored on T2 and FLAIR sequences: poorly demarcated (deep) grey and/or white matter lesions, gyral filling, extensive confluent white matter lesions, well-demarcated ovoid lesions (MS-like) and non-specific lesions.^{13,14} Spinal MRIs were evaluated if available and scored for lesion location (cervical, thoracic, and lumbar) and presence of longitudinally extensive transverse

myelitis (LETM; ≥ 3 segments).¹² For the serial sample analyses, only samples ≥ 3 months after the previous sample were taken into account.

CBAs

CBAs were used for MOG-IgG and AQP4-IgG detection as described elsewhere.^{6,15} Briefly, patient serum was incubated with HEK 293 cells transiently transfected with AQP4-M23 (enhanced green fluorescent protein (eGFP) tagged; final serum dilution 1:20) or LN18 cells stably transfected with full-length MOG (eGFP tagged; final serum dilution 1:200). After washing, cells were subsequently incubated with goat anti-human IgG allophycocyanin-conjugated secondary antibody (specific for human IgG; Jackson ImmunoResearch Laboratories and Brunschwig Chemie B.V., Amsterdam, The Netherlands) and analysed after washing using fluorescence-activated cell sorting. We expressed the quantitative levels of antibody titers as the difference in median fluorescence intensity (Δ MFI) between the AQP4- and MOG-transfected with, respectively, the untransfected HEK 293 cells and untransfected LN18 cells. The cut-off was determined in every assay as the average mean fluorescence intensity + 10 standard deviations of 8 individual negative control sera. Both assays have an anti-IgG-specific detection antibody and thus no IgM anti-MOG or IgM anti-AQP4 was detected.

Ethical approval

This study was approved by the Medical Ethical Committee of the Erasmus MC in Rotterdam. All patients from the Erasmus MC provided written informed consent.

Statistical analysis

Demographic data of the general Dutch population were provided by Statistics Netherlands and were used to calculate the incidence rates. For statistical analyses, we used IBM SPSS software, version 24.0 (IBM Corp., Armonk, NY) and GraphPad Prism 5 (GraphPad Software, San Diego, CA). The chi-square test and Mann–Whitney's *U*-test were used to compare categorical and continuous data, respectively.

Data availability

The raw data used in this paper could be shared in an anonymised format by request from a qualified investigator through contacting the corresponding author.

Table 1. Incidence figures of anti-MOG seropositivity in the Netherlands.

Year	Incidence in children per 100,000 people (95% CI)	Number of Dutch paediatric inhabitants	Number of MOG-IgG-seropositive paediatric patients/year	Incidence in adults per 100,000 people (95% CI)	Number of Dutch adult inhabitants	Number of MOG-IgG-seropositive adult patients/year	Overall incidence per 100,000 people (95% CI)
2014	0.06 (0.007–0.20)	3.442.802	2	0.05 (0.02–0.11)	13.386.487	7	0.05 (0.03–0.10)
2015	0.20 (0.09–0.38)	3.429.193	7	0.11 (0.06–0.18)	13.471.533	15	0.13 (0.08–0.19)
2016	0.26 (0.13–0.44)	3.416.581	9	0.08 (0.04–0.14)	13.562.539	11	0.12 (0.07–0.18)
2017	0.47 (0.30–0.65)	3.404.098	16	0.18 (0.12–0.26)	13.677.409	25	0.24 (0.18–0.31)
Mean/year 2015–2017	0.31 (0.17–0.51)	3.416.624	11	0.13 (0.08–0.19)	13.570.493	17	0.16 (0.11–0.23)

MOG: myelin oligodendrocyte glycoprotein; CI: confidence interval.

Results

Incidence figures

From 1 February 2014 to 31 December 2017, 1414 serum samples of 1277 patients were tested for MOG-IgG. Of all included patients, 92 (7%) were seropositive. In total, 196 children and adolescents younger than 18 years were tested. Of these paediatric patients, 34 (17%) were MOG-IgG-seropositive. To calculate the representative mean incidence of MOG-IgG seropositivity in the Netherlands, data from 2015 to 2017 were used resulting in an incidence of 0.16 per year per 100,000 people (95% confidence interval (CI): 0.11–0.23). After dividing the MOG-IgG patients into children and adults, we observed a mean incidence of 0.31 per 100,000 children (95% CI: 0.17–0.51) and 0.13 per 100,000 adults per year (95% CI: 0.08–0.19). The incidence figures for children, adults and all patients of the included years are shown in Table 1.

Baseline characteristics

In total, 61 of 92 (66%) MOG-IgG-seropositive patients were treated in the Dutch ADS centre (paediatric disease onset, $n=34$; adult disease onset, $n=27$). The clinical characteristics of this subgroup are displayed in Table 2. The MOG-IgG assay result was not related to the time from sampling since last disease activity ($p=0.8$). The median age of onset in adult patients was 32.6 years and in children 8.7 years with an equal gender distribution in both adults and children. MOG-IgG seropositivity was seen mostly in patients from Caucasian origin (45/61, 74%), reflecting the population structure of the Netherlands.¹⁰ In children, the most common presenting phenotypes

were ADEM (19/34, 56%), optic neuritis (ON, 7/34, 21%; of them 2/7, 29% bilateral ON) and neuromyelitis optica (NMO, 5/34, 15%) with simultaneous ON and transverse myelitis (TM), comprising 92% of all presenting phenotypes. In adults, common presentations were ON (12/27, 44%; of them 7/12, 58% bilateral ON), TM (11/27, 41%) and NMO (3/27, 11%). Isolated brainstem syndromes were rare; however, 6/61 (10%) of our patients had brainstem involvement at first presentation.

Follow-up characteristics

The most common phenotypes at end of FU in children were monophasic ADEM (14/34, 41%), followed by ON (6/34, 18%) and NMO (6/34, 18%). One MOG-IgG-seropositive child was diagnosed with relapsing remitting MS (RRMS; low delta-MFI: 330, cut-off: 104). Another child had a first episode of ON and had multiple relapses with a cortical phenotype (epilepsy, hemiparesis) with new corresponding lesions on brain MRI. In adults, the ON phenotype was most common (10/27, 37%), followed by TM (8/27, 30%) and NMO (13/27, 30%). During FU, optic nerve involvement was observed at least once in 16/34 children (47%) and in 17/27 adults (63%). Two out of 34 children showed relapsing ON (6%) and 3 out of 27 adults (11%). One of these adult patients (4%) was diagnosed with chronic relapsing inflammatory optic neuritis (CRION), suffering from multiple relapses when tapering off oral prednisone and showing quick and complete recovery after steroid administration. The distribution of clinical phenotypes at presentation and at last follow-up is presented in Figure 1 for adults and children.

Table 2. Clinical characteristics of MOG-IgG-seropositive patients.

	Children (<i>n</i> =34)	Adults (<i>n</i> =27)	All (<i>n</i> =61)	<i>p</i> -value*
Age, median (IQR), years	8.7 (5.7–12.3)	32.6 (25.4–48.6)	16.6 (7.9–31.9)	<0.001
Sex, female, <i>n</i> (%)	16 (47)	12 (44)	28 (46)	0.8
AID comorbidity, <i>n</i> (%)	1 (3)	0 (0)	1 (2)	1.0
Caucasian, <i>n</i> (%)	23 (68)	22 (81)	45 (74)	0.3
Type of onset, <i>n</i> (%)				<0.001
ON	7 (21)	12 (44)	19 (31)	
Bilateral	2/7 (29)	7/12 (58)	9/19 (47)	
TM	1 (3)	11 (41)	12 (20)	
LETM	1/1 (100)	5/11 (42)	6/12 (50)	
Brainstem syndrome	1 (3)	1 (4)	2 (3)	
CIS other	1 (3)	0	1 (2)	
NMO	5 (15)	3 (11)	8 (13)	
ADEM	19 (56)	0 (0)	19 (31)	
MRI brain lesions, <i>n</i> (%)	23/32 (72)	7/27 (26)	30/59 (51)	0.001
Poorly demarcated (deep) grey and white matter involvement	16 (70)	0	16 (53)	<0.001
Gyral filling	11 (48)	0	11 (37)	0.003
Extensive confluent white matter lesions	2 (9)	0	2 (7)	0.5
Well-demarcated ovoid lesions (MS-like)	4 (17)	3 (43)	7 (23)	1.0
Non-specific lesions	3 (13)	5 (71)	8 (27)	0.1
MRI spine lesions, <i>n</i> (%)	13/22 (59)	13/22 (59)	26/44 (59)	1.0
Cervical	10 (77)	9 (69)	19 (73)	1.0
Thoracic	12 (92)	8 (57)	20 (77)	0.3
Lumbar	6 (46)	0 (0)	6/26 (23)	0.02
≥2 CSF unique OCB, <i>n</i> (%)	3 (11)	5 (28)	8 (18)	0.3
Relapsing disease, <i>n</i> (%)	9 (27)	11 (41)	20 (33)	0.2
Time to first relapse, median (range), months	10.5 (1.8–322.1)	7.7 (0.4–218.7)	8.0 (0.4–322.1)	0.5
Use of IMT, <i>n</i> (%)	12 (36)	8 (30)	20 (33)	0.6
Follow-up time, median (IQR), months	30.7 (10.3–71.2)	20.2 (11.3–43.0)	27.5 (11.3–61.9)	0.5
Type at last follow-up, <i>n</i> (%)				<0.001
ON	6 (18)	10 (37)	16 (26)	
Bilateral	3/6 (50)	6/10 (60)	9/16 (56)	
TM	1 (3)	8 (30)	9 (15)	
LETM	1/1 (100)	3/8 (38)	4/9 (44)	
Brainstem syndrome	0 (0)	1 (4)	1 (2)	
Monophasic ADEM	14 (41)	0 (0)	14 (23)	
NMO	6 (18)	8 (30)	13 (21)	
Other ^a	7 (21)	0 (0)	7 (12)	

IQR: interquartile range; AID: autoimmune diseases; ON: optic neuritis; TM: transverse myelitis; LETM: longitudinal extended transverse myelitis; CIS: clinically isolated syndrome other than ON or TM; NMO: neuromyelitis optica with ON and TM involvement; ADEM: acute disseminated encephalomyelitis; CSF: cerebrospinal fluid; OCB: oligoclonal bands; IMT: immunomodulatory treatment.

This table related to the subgroup of 61 out of the 92 MOG-IgG-seropositive patients (66%) for which we had clinical data available at the National ADS centre.

^aOther (*n*=7): children were diagnosed with ADEM-ON (*n*=3), ADEM-TM (*n*=1), ON followed by cortical phenotype (epilepsy and hemiparesis, *n*=1), CIS (*n*=1) and relapsing remitting MS (*n*=1).

*Considered significant if *p*-value < 0.05. Comparison between adults and children.

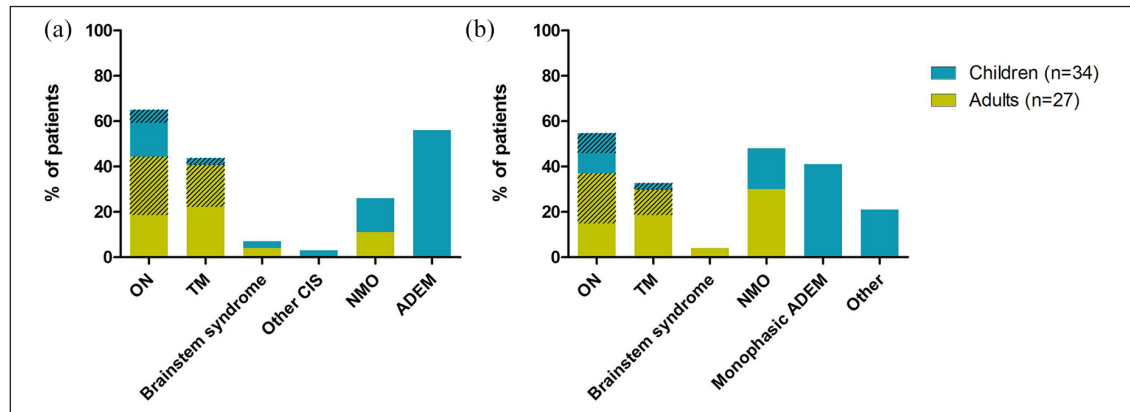


Figure 1. Distribution of clinical phenotypes in adults and children: (a) phenotypes at first presentation; (b) phenotypes at last follow-up. Other ($n=7$) children were diagnosed with ADEM-ON ($n=3$), ADEM-TM ($n=1$), ON followed by cortical phenotype (epilepsy and hemiparesis, $n=1$), clinically isolated syndrome (CIS, $n=1$) and relapsing remitting MS ($n=1$). Striped areas: bilateral optic neuritis and longitudinal extensive transverse myelitis, respectively. ON: optic neuritis; TM: transverse myelitis; CIS: clinically isolated syndromes other than ON or TM (other CIS); NMO: neuromyelitis optica; ADEM: acute disseminated encephalomyelitis.

At the end of FU (median: 27.5 months, IQR: 11.3–61.9, range: 1.0–329.1), 20/61 (33%) patients showed a relapsing disease course (paediatric onset 9/34, 26%; adult onset 11/27, 41%). The proportion of patients with a first relapse within the first year after onset was 75% (median time to first relapse (TTFR): 5.8 months, IQR: 2.5–10.1 months). After 2 and 3 years, this proportion was 80% (16/20) for both time intervals. Within 5 years, 17/20 (85%) of the relapsing patients had a relapse. The remaining 3/20 relapsing patients were tested MOG-IgG-positive >200 months after the initial attack, suggesting an extended TTFR. Of these 20 relapsing patients, 15 (75%) were given immunomodulatory or immunosuppressive treatment (IMT), including azathioprine, rituximab (RTX), mycophenolate, cyclophosphamide, monthly intravenous immunoglobulins (IvIG) and teriflunomide.

Longitudinal analysis of MOG-IgG

Serial sampling was performed in 25/61 (41%) National ADS centre patients for routine clinical care (40 serum samples) with a median interval between first and last sample of 13.7 months (IQR: 7.2–25.4) with a median follow-up of 31.9 months (IQR: 12.3–57.7).

In Figure 2, we divided the 25 patients with serial samples into 4 groups based on their disease course and the last available test result: (1) relapsing patients with persisting MOG-IgG ($n=6$); (2) relapsing patients who turned seronegative for MOG-IgG ($n=4$); (3) monophasic patients with persisting MOG-IgG ($n=10$); and

(4) monophasic patients who turned seronegative for MOG-IgG ($n=5$).

We observed that 10/15 (67%) monophasic patients remained seropositive (with a median FU time of 23.6 months; IQR: 9.7–50.1; median onset-to-last-sampling time of 21.7 months). The 5/15 (33%) monophasic who turned seronegative had a median FU of 30.4 months (IQR: 19.5–75.4). Relapsing patients ($n=10$) remained seropositive in 6/10 (60%) during a median FU of 38.1 months (IQR: 22.4–121.7). Four relapsing patients became seronegative during FU 62.2 months (IQR: 33.0–215.6). In three out of these four patients, no relapses occurred after turning seronegative. One out of these four patients had new clinical disease activity (ON) after turning seronegative while being on RTX and monthly IvIG: the first blood sample with a negative result was taken 4 months after the previous attack while being on oral prednisone and azathioprine, and the second negative blood sample was taken 2 days after two cycles of RTX therapy. Two out of the three patients who did not show relapses anymore after turning seronegative were treated with IMT, including cyclophosphamide, MMF and azathioprine.

IMT was initiated in 6/16 MOG-IgG-positive patients who remained positive during FU. Nine patients converted into seronegativity during FU. In four of these patients, IMT was initiated. For these individuals, we cannot rule out that this has affected their serostatus and delta MFI. Overall, we found no relation between IMT use and the last serostatus ($p=1.0$).

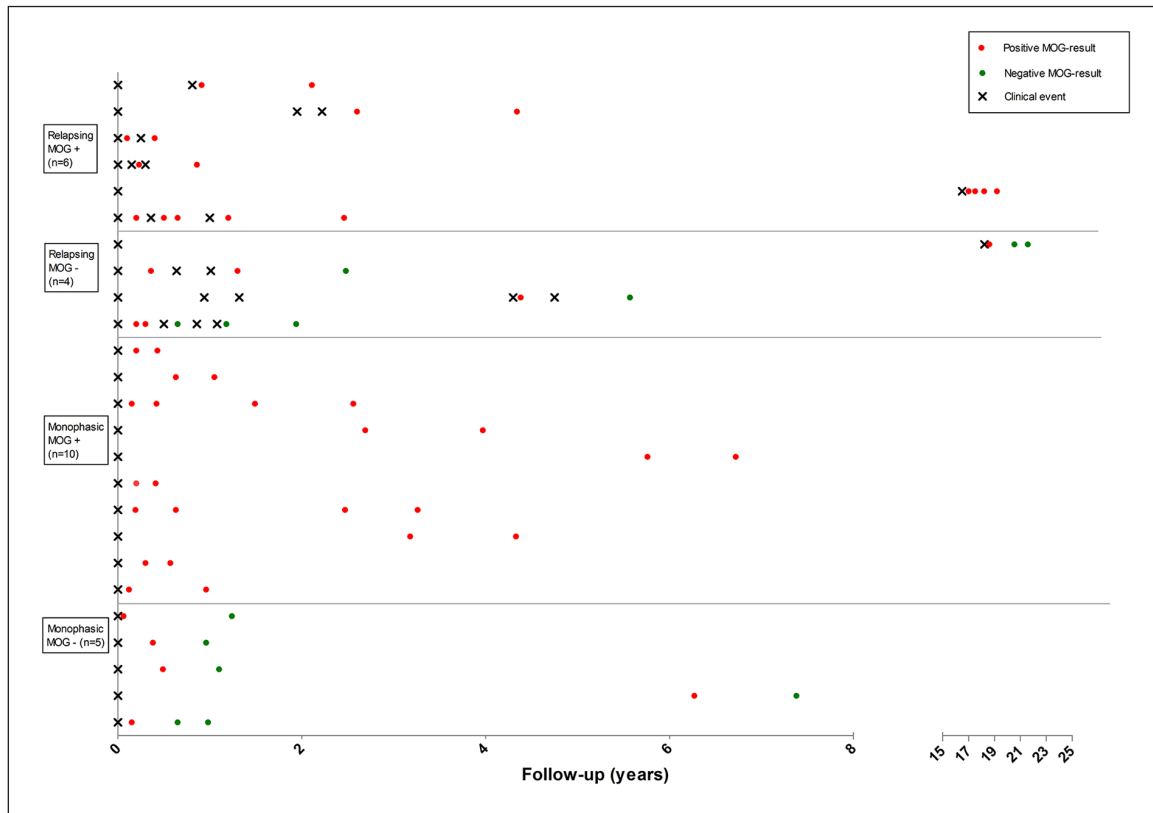


Figure 2. Longitudinal analysis of clinical and serological data; 25 of the 61 MOG-IgG-positive patients who were known at the National ADS centre were tested serially for MOG-IgG. Patients are classified into four groups according to their disease course (relapsing or monophasic) and the results of the last tested serum sample of that patient.

Discussion

We report the incidence estimate of MOG-IgG seropositivity in both adults and children with CNS-ADS in the Netherlands, from data derived from the National ADS centre. All samples were tested in one central laboratory, resulting in a nationwide MOG-IgG seropositivity incidence of 0.16/100,000 people per year (95% CI: 0.11–0.23), with a higher incidence in children (0.31/100,000; 95% CI: 0.17–0.51) than in adults (0.13/100,000; 95% CI: 0.08–0.19), reflecting the rarity of MOG-IgG seropositivity. These incidences result in 11 MOG-IgG-positive children and 17 MOG-IgG-positive adults per year. Previous studies showed that 18%–32% of the paediatric ADS patients are MOG-IgG-positive at baseline.^{6,16,17} Recently, we reported an update of the paediatric ADS incidence in the Netherlands of 0.80/100,000 children.¹⁸ When extrapolating these results, the incidence of MOG-IgG-positive patients in the paediatric population could vary between 0.14 and 0.26 per 100,000 children. Our incidence figure of 0.31/100,000 (95% CI: 0.17–0.51) approximates this range, though somewhat higher. A slight difference is that in the current study, only patients with a positive test result

were included. Incidence figures of MOG-IgG testing bear relevance for clinical care and counselling and also for survey of these ailments, implementation of assays in regional/national laboratories, planning with health care authorities and organisation of potential future clinical trials.

We had access to the clinical data of 61 MOG-IgG-seropositive patients who were all known in the National ADS centre (66%). In keeping with previous studies, the optic nerve was frequently involved in children (47%) and adults (63%) with MOG-IgG.^{5,19–22} Isolated brainstem syndromes were rare in both children and adults, but 10% of our patients showed brainstem involvement at first presentation, in contrast to another study (30% in total at presentation and during follow-up).²³ This could be due to different inclusion criteria between the studies. The clinical phenotypes that our patients showed at the end of follow-up were similar to previously published literature. Yet, one girl in our study experienced one ON and relapsing disease with predominantly cortical presentations (unilateral cerebral cortical epilepsy and hemiparesis). This presentation with seizures was described earlier in a case

report with four MOG-IgG-seropositive adult patients (of whom two also experienced ON prior to seizures) and in a recent study, two children are identified.^{9,24} Earlier comparison with AQP4-IgG-positive patients also indicated a higher occurrence of seizures in MOG-IgG-positive patients.²⁵ The clinical spectrum of MOG-IgG-positive patients may further expand since the CBAs are now being established worldwide and more patients with MOG-IgG-related diseases are being identified. Clinicians should be aware of less frequently reported clinical manifestations associated with MOG-IgG positivity.

A relapsing disease course was observed in 33% of our patients, in line with other studies.^{5,26} In children, the proportion of MOG-IgG-positive patients with relapses (27%) is somewhat lower than in previous literature (up to 50%).^{6,16,17} In adults, 41% of the patients had a relapsing disease course which was comparable to other studies.^{5,19,21,26} However, a few studies reported a much higher proportion of relapsing patients (62%–80%) after a longer period of follow-up.^{14,27,28} This high proportion could be explained by longer follow-ups and the retrospective character of the studies. Our current figures of relapsing patients support a wait-and-see policy in at least a subgroup after the first attack of MOG-IgG-associated CNS demyelination.

Of note is that the majority of our relapsing patients (75%) have their first attack within 1 year after onset with a median TTFR of 5.8 months, comparable with other studies.^{19,29} Compared to AQP4-positive patients, the TTFR in the MOG-IgG patients is similar.¹⁹ In our previous work, we reported a significantly longer TTFR of 28 months which can be explained by the small sample size.⁵ A minor subgroup of the MOG-IgG-positive patients showed a relapse after an exceptional long time interval of >20 years after onset, in line with other studies.^{5,29,30}

The longitudinal analysis of MOG-IgG patients showed that a considerable proportion of relapsing patients remains seropositive (64%). Yet, in our study, one patient had new relapses after turning seronegative, while being treated with potent immune suppression with RTX and monthly IvIG. A possible explanation is the timing of the blood sampling, as the first blood sample with a negative result was taken 4 months after the previous attack while being treated with immunosuppression, and the second negative blood sample was taken 2 days after a two cycles of RTX therapy. This might have influenced the MOG-IgG results. Beside from this patient, no relapses were observed in relapsing patients who eventually converted to seronegativity.

This is in line with another study that described 10 MOG-IgG-positive patients with serial sampling, and observed that no relapses occur after patients turned seronegative.³¹

One child was diagnosed with relapsing remitting MS with a typical MS disease course, including MS-like MRI fulfilling both the McDonald 2010 and 2017 criteria and had unique CSF oligoclonal bands and was therefore treated with teriflunomide. The delta-MFI was low (330; cut-off: 104). Low levels of MOG-IgG are observed in paediatric RRMS patients in previous studies.^{6,32}

Our study has several limitations. First, these current incidence estimates are minimum figures, since mild cases and forme fruste types of the disease could have been missed. Rather than bona fide incidence, this can also be interpreted as the number of cases detected at the nation-level per year; this is by itself of interest and reflects the change of clinical practice. The incidence of 2014 is excluded from the mean incidence calculation, since the number is exceptionally low compared to the following years. This is most likely due to the low awareness of CBA availability in the first year after launching the CBA as a routine diagnostic test. Increased awareness of treating physicians could potentially contribute to even higher incidence figures in the future by testing more patients more quickly, although an asymptote may have been reached in this relatively small country. Second, it has not been feasible to have access to full clinical data of all MOG-IgG-seropositive patients in this country apart from the patient's gender, as we did not have ethical permission to approach the patients who have not visited the Erasmus MC. Still, the more detailed analysis of this study covered 66% of the study population as these patients were referred to our National ADS centre. It is possible that certain phenotypes are over-represented in this group, for example, because of a lower threshold for referral in case of recurrent disease. Third, for definite conclusions on the temporal dynamics of MOG-IgG and the effect of immunosuppressive drugs on MOG-IgG serostatus, we lacked sufficient sample size and systematic schedule for blood sampling. Well-designed prospective studies including blood sampling at pre-defined time points will be needed to address these important questions.

In conclusion, this nationwide study of a typical western European country shows that the overall incidence of MOG-IgG-seropositive disease in children and adults is low, with an average of 0.16 per 100,000 people (95% CI: 0.11–0.23). The distribution over the different clinical phenotypes differs between adults

and children. Seropositivity can be maintained over years even without clinical activity, while patients who converted to seronegativity during follow-up generally had no new relapses. Further studies with detailed clinical and serological follow-up in an international collaborative setting will set the stage for further improved insight on the use of this diagnostic test in clinical practice.

Acknowledgements

The authors thank the children, adults and their families for their participation in this study. They thank all the analysts in the autoimmune laboratory of Sanquin Diagnostic Services for performing the AQP4-IgG and MOG-IgG CBAs.

Author Contribution

C.L.M. contributed to study design, statistical analysis, interpretation of data and draft of the manuscript; Y.Y.M.W. contributed to study design, acquisition of data, statistical analysis, interpretation of data and draft of the manuscript; E.D.P., B.H.A.W., T.A.M.S., R.F.N. and D.H. contributed to acquisition of data and revision of manuscript for content; and R.Q.H. contributed to study design, study supervision, interpretation of data, and revision of manuscript for content. All authors reviewed and agreed on the content of this manuscript.

Declaration of Conflicting Interests

The author(s) declared the following potential conflicts of interest with respect to the research, authorship and/or publication of this article: R.F.N. participated in trials with Sanofi and Novartis. R.Q.H. received honoraria for serving on advisory boards for Biogen Idec, Roche and Sanofi; he participated in trials with Biogen Idec, Merck-Serono, Roche, Genzyme and Novartis

Funding

The author(s) disclosed receipt of the following financial support for the research, authorship and/or publication of this article: The study was supported by the Dutch MS Research Foundation. This study was not industry-sponsored.

ORCID iD

CL de Mol  <https://orcid.org/0000-0002-3733-1706>

References

1. Linington C, Webb M and Woodhams PL. A novel myelin-associated glycoprotein defined by a mouse monoclonal antibody. *J Neuroimmunol* 1984; 6(6): 387–396.
2. Hemmer B, Archelos JJ and Hartung HP. New concepts in the immunopathogenesis of multiple sclerosis. *Nat Rev Neurosci* 2002; 3(4): 291–301.
3. Linington C, Bradl M, Lassmann H, et al. Augmentation of demyelination in rat acute allergic encephalomyelitis by circulating mouse monoclonal antibodies directed against a myelin/oligodendrocyte glycoprotein. *Am J Pathol* 1988; 130(3): 443–454.
4. Schluesener HJ, Sobel RA, Linington C, et al. A monoclonal antibody against a myelin oligodendrocyte glycoprotein induces relapses and demyelination in central nervous system autoimmune disease. *J Immunol* 1987; 139(12): 4016–4021.
5. Van Pelt ED, Wong YY, Ketelslegers IA, et al. Neuromyelitis optica spectrum disorders: comparison of clinical and magnetic resonance imaging characteristics of AQP4-IgG versus MOG-IgG seropositive cases in the Netherlands. *Eur J Neurol* 2016; 23(3): 580–587.
6. Ketelslegers IA, VanPelt DE, Bryde S, et al. Anti-MOG antibodies plead against MS diagnosis in an Acquired Demyelinating Syndromes cohort. *Mult Scler* 2015; 21(12): 1513–1520.
7. Spadaro M, Gerdes LA, Krumbholz M, et al. Autoantibodies to MOG in a distinct subgroup of adult multiple sclerosis. *Neurol Neuroimmunol Neuroinflamm* 2016; 3(5): e257.
8. Besong-Agbo D, Wolf E, Jessen F, et al. Naturally occurring alpha-synuclein autoantibody levels are lower in patients with Parkinson disease. *Neurology* 2013; 80(2): 169–175.
9. Ramanathan S, Mohammad S, Tantsis E, et al. Clinical course, therapeutic responses and outcomes in relapsing MOG antibody-associated demyelination. *J Neurol Neurosurg Psychiatry* 2018; 89(2): 127–137.
10. Central Bureau voor de Statistiek. Bevolking; generatie, geslacht, leeftijd en migratieachtergrond, 1 January. <http://statline.cbs.nl/Statweb/selection/?VW=T&DM=SLNL&PA=37325&D1=a&D2=0&D3=0&D4=0&D5=0%2c2-8%2c10&D6=0%2c4%2c9%2c14%2c19-21&HDR=G5&STB=G1%2cG2%2cG3%2cG4%2cT> (2018, accessed 30 March 2018).
11. Krupp LB, Tardieu M, Amato MP, et al. International Pediatric Multiple Sclerosis Study Group criteria for pediatric multiple sclerosis and immune-mediated central nervous system demyelinating disorders: Revisions to the 2007 definitions. *MultScler* 2013; 19(10): 1261–1267.
12. Wingerchuk DM, Banwell B, Bennett JL, et al. International consensus diagnostic criteria for neuromyelitis optica spectrum disorders. *Neurology* 2015; 85: 177–189.

13. Baumann M, Grams A, Djurdjevic T, et al. MRI of the first event in pediatric acquired demyelinating syndromes with antibodies to myelin oligodendrocyte glycoprotein. *J Neurol* 2018; 265(4): 845–855.
14. Jurynczyk M, Geraldes R, Probert F, et al. Distinct brain imaging characteristics of autoantibody-mediated CNS conditions and multiple sclerosis. *Brain* 2017; 140(3): 617–627.
15. Ketelslegers IA, Modderman PW, Vennegoor A, et al. Antibodies against aquaporin-4 in neuromyelitis optica: distinction between recurrent and monophasic patients. *MultScler* 2011; 17(12): 1527–1530.
16. Duignan S, Wright S, Rossor T, et al. Myelin oligodendrocyte glycoprotein and aquaporin-4 antibodies are highly specific in children with acquired demyelinating syndromes. *Dev Med Child Neurol* 2018; 60: 958–962.
17. Hacoheh Y, Absoud M, Deiva K, et al. Myelin oligodendrocyte glycoprotein antibodies are associated with a non-MS course in children. *Neurol Neuroimmunol Neuroinflamm* 2015; 2(2): e81.
18. De Mol CL, Wong YYM, Van Pelt ED, et al. Incidence and outcome of acquired demyelinating syndromes in Dutch children: Update of a nationwide and prospective study. *J Neurol* 2018; 265: 1310–1319.
19. Hoftberger R, Sepulveda M, Armangue T, et al. Antibodies to MOG and AQP4 in adults with neuromyelitis optica and suspected limited forms of the disease. *MultScler* 2015; 21(7): 866–874.
20. Kitley J, Waters P, Woodhall M, et al. Neuromyelitisoptica spectrum disorders with aquaporin-4 and myelin-oligodendrocyte glycoprotein antibodies: A comparative study. *JAMA Neurol* 2014; 71(3): 276–283.
21. Sato DK, Callegaro D, Lana-Peixoto MA, et al. Distinction between MOG antibody-positive and AQP4 antibody-positive NMO spectrum disorders. *Neurology* 2014; 82: 474–481.
22. Sepulveda M, Armangue T, Sola-Valls N, et al. Neuromyelitisoptica spectrum disorders: Comparison according to the phenotype and serostatus. *Neurol Neuroimmunol Neuroinflamm* 2016; 3(3): e225.
23. Jarius S, Kleiter I, Ruprecht K, et al. MOG-IgG in NMO and related disorders: A multicenter study of 50 patients. Part 3: Brainstem involvement – frequency, presentation and outcome. *J Neuroinflammation* 2016; 13(1): 281.
24. Ogawa R, Nakashima I, Takahashi T, et al. MOG antibody-positive, benign, unilateral, cerebral cortical encephalitis with epilepsy. *Neurol Neuroimmunol Neuroinflamm* 2017; 4(2): e322.
25. Hamid SHM, Whittam D, Saviour M, et al. Seizures and encephalitis in myelin oligodendrocyte glycoprotein IgG disease vs aquaporin 4 IgG disease. *JAMA Neurol* 2018; 75(1): 65–71.
26. Kim SM, Woodhall MR, Kim JS, et al. Antibodies to MOG in adults with inflammatory demyelinating disease of the CNS. *Neurol Neuroimmunol Neuroinflamm* 2015; 2(6): e163.
27. Jarius S, Ruprecht K, Kleiter I, et al. MOG-IgG in NMO and related disorders: A multicenter study of 50 patients. Part 2: Epidemiology, clinical presentation, radiological and laboratory features, treatment responses, and long-term outcome. *J Neuroinflammation* 2016; 13(1): 280.
28. Cobo-Calvo A, Ruiz A, Maillart E, et al. Clinical spectrum and prognostic value of CNS MOG autoimmunity in adults: The MOGADOR study. *Neurology* 2018; 90: e1858–e1869.
29. Hacoheh Y, Wong YY, Lechner C, et al. Disease course and treatment responses in children with relapsing myelin oligodendrocyte glycoprotein antibody-associated disease. *JAMA Neurol* 2018; 75(4): 478–487.
30. Wong YYM, Hacoheh Y, Armangue T, et al. Paediatric acute disseminated encephalomyelitis followed by optic neuritis: Disease course, treatment response and outcome. *Eur J Neurol* 2018; 25: 782–786.
31. Hyun JW, Woodhall MR, Kim SH, et al. Longitudinal analysis of myelin oligodendrocyte glycoprotein antibodies in CNS inflammatory diseases. *J Neurol Neurosurg Psychiatry* 2017; 88(10): 811–817.
32. Hennes EM, Baumann M, Schanda K, et al. Prognostic relevance of MOG antibodies in children with an acquired demyelinating syndrome. *Neurology* 2017; 89(9): 900–908.