

# EUR Research Information Portal

## Performance of diagnostic tools for acute cholangitis in patients with suspected biliary obstruction

**Published in:**

Journal of Hepato-Biliary-Pancreatic Sciences

**Publication status and date:**

Published: 01/04/2022

**DOI (link to publisher):**

[10.1002/jhbp.1096](https://doi.org/10.1002/jhbp.1096)

**Document Version**

Publisher's PDF, also known as Version of record

**Document License/Available under:**

CC BY

**Citation for the published version (APA):**

Sperna Weiland, C. J., Busch, C. B. E., the Dutch Pancreatitis Study Group, Bhalla, A., Bruno, M. J., Fockens, P., van Hooft, J. E., Poen, A. C., Timmerhuis, H. C., Umans, D. S., Venneman, N. G., Verdonk, R. C., Drenth, J. P. H., de Wijkerslooth, T. R., & van Geenen, E. J. M. (2022). Performance of diagnostic tools for acute cholangitis in patients with suspected biliary obstruction. *Journal of Hepato-Biliary-Pancreatic Sciences*, 29(4), 479-486. <https://doi.org/10.1002/jhbp.1096>

[Link to publication on the EUR Research Information Portal](#)

**Terms and Conditions of Use**

Except as permitted by the applicable copyright law, you may not reproduce or make this material available to any third party without the prior written permission from the copyright holder(s). Copyright law allows the following uses of this material without prior permission:

- you may download, save and print a copy of this material for your personal use only;
- you may share the EUR portal link to this material.



In case the material is published with an open access license (e.g. a Creative Commons (CC) license), other uses may be allowed. Please check the terms and conditions of the specific license.

**Take-down policy**

If you believe that this material infringes your copyright and/or any other intellectual property rights, you may request its removal by contacting us at the following email address: [openaccess.library@eur.nl](mailto:openaccess.library@eur.nl). Please provide us with all the relevant information, including the reasons why you believe any of your rights have been infringed. In case of a legitimate complaint, we will make the material inaccessible and/or remove it from the website.

## ORIGINAL ARTICLE

# Performance of diagnostic tools for acute cholangitis in patients with suspected biliary obstruction

Christina J. Sperna Weiland<sup>1,2</sup>  | Celine B. E. Busch<sup>2</sup> | Abha Bhalla<sup>3</sup> | Marco J. Bruno<sup>4</sup> | Paul Fockens<sup>5</sup> | Jeanin E. van Hooft<sup>6</sup> | Alexander C. Poen<sup>7</sup> | Hester C. Timmerhuis<sup>2,8</sup>  | Devica S. Umans<sup>2,5</sup> | Niels G. Venneman<sup>9</sup> | Robert C. Verdonk<sup>10</sup> | Joost P. H. Drenth<sup>1</sup> | Thomas R. de Wijkerslooth<sup>11</sup> | Erwin J. M. van Geenen<sup>1</sup> | on behalf of the Dutch Pancreatitis Study Group

<sup>1</sup>Department of Gastroenterology and Hepatology, Radboudumc, Nijmegen, The Netherlands

<sup>2</sup>Department of Research and Development, St. Antonius Hospital, Nieuwegein, The Netherlands

<sup>3</sup>Department of Gastroenterology and Hepatology, Hagaziekenhuis, The Hague, The Netherlands

<sup>4</sup>Department of Gastroenterology and Hepatology, Erasmus Medical Centre, Rotterdam, the Netherlands

<sup>5</sup>Department of Gastroenterology and Hepatology, Amsterdam Gastroenterology Endocrinology Metabolism, Amsterdam UMC, Amsterdam, the Netherlands

<sup>6</sup>Department of Gastroenterology and Hepatology, Leiden University medical Centre, Leiden, The Netherlands

<sup>7</sup>Department of Gastroenterology and Hepatology, Isala Clinics, Zwolle, The Netherlands

<sup>8</sup>Department of Surgery, St. Antonius Hospital, Nieuwegein, The Netherlands

<sup>9</sup>Department of Gastroenterology and Hepatology, Medisch Spectrum Twente, Enschede, The Netherlands

<sup>10</sup>Department of Gastroenterology and Hepatology, St. Antonius Hospital, Nieuwegein, The Netherlands

<sup>11</sup>Department of Gastroenterology and Hepatology, Netherlands Cancer Institute - Antoni van Leeuwenhoek hospital, Amsterdam, The Netherlands

## Correspondence

Christina J. Sperna Weiland,  
Department of Gastroenterology and  
Hepatology, Radboudumc, Postbus  
9101, 6500 HB, Nijmegen, The  
Netherlands.  
Email: christa.spernaweiland@  
radboudumc.nl

## Funding information

The study was funded by the Netherlands Organisation for Health Research and Development (ZonMw; grant number 837001506) and the Radboud university medical center. The funding source has no role in the design, practice or analysis of this study.

## Abstract

**Background:** Acute cholangitis is an infection requiring endoscopic retrograde cholangiopancreatography (ERCP) and antibiotics. Several diagnostic tools help to diagnose cholangitis. Because diagnostic performance of these tools has not been studied and might therefore impose unnecessary ERCPs, we aimed to evaluate this.

**Methods:** We established a nationwide prospective cohort of patients with suspected biliary obstruction who underwent an ERCP. We assessed the diagnostic performance of Tokyo Guidelines (TG18), Dutch Pancreatitis Study Group (DPSG) criteria, and Charcot triad relative to real-world cholangitis as the reference standard.

**Results:** 127 (16%) of 794 patients were diagnosed with real-world cholangitis. Using the TG18, DPSG, and Charcot triad, 345 (44%), 55 (7%), and 66 (8%) patients were defined as having cholangitis, respectively. Sensitivity for TG18 was

This is an open access article under the terms of the Creative Commons Attribution License, which permits use, distribution and reproduction in any medium, provided the original work is properly cited.

© 2021 The Authors. *Journal of Hepato-Biliary-Pancreatic Sciences* published by John Wiley & Sons Australia, Ltd on behalf of Japanese Society of Hepato-Biliary-Pancreatic Surgery

82% (95% CI 74-88) and specificity 60% (95% CI 56-63). The sensitivity for DPSG and Charcot was 42% (95% CI 33-51) and 46% (95% CI 38-56), specificity was 99.7% (95% CI 99-100) and 99% (95% CI 98-100), respectively.

**Conclusions:** TG18 criteria incorrectly diagnoses four out of ten patients with real-world cholangitis, while DPSG and Charcot criteria failed to diagnose more than half of patients. As the cholangitis diagnosis has many consequences for treatment, there is a need for more accurate diagnostic tools or work-up towards ERCP.

#### KEYWORDS

biliary tract diseases, cholangiopancreatographies, cholangitis, diagnoses and examinations, endoscopic retrograde, validation study

## 1 | INTRODUCTION

Acute or ascending cholangitis is a bacterial infection of the biliary tract superimposed upon bile duct obstruction.<sup>1,2</sup> The most common cause is biliary obstruction as a result of common bile duct (CBD) stones.<sup>2</sup> Acute cholangitis is a serious condition with a mortality of up to 50% when left untreated.<sup>3</sup> Initial treatment comprises antibiotics and subsequent adequate biliary drainage, preferably by performing an endoscopic retrograde cholangiopancreatography (ERCP).<sup>4</sup> Recent meta-analyses reported a relation between timing of the ERCP and mortality rates, suggesting the earlier the better.<sup>5,6</sup> With adequate treatment a mortality of <2% can be achieved.<sup>6,7</sup> Therefore, diagnosing an acute cholangitis early and accurately, using diagnostic criteria with a high sensitivity and specificity is of pivotal importance.

Traditionally, acute cholangitis is diagnosed according to the Charcot triad.<sup>8</sup> This relies on clinical signs: abdominal pain in the right upper quadrant, fever, and jaundice. The presence of the Charcot triad strongly suggests the presence of acute cholangitis (sensitivity 93%). Due to its low sensitivity (36%), its usefulness as diagnostic tool for acute cholangitis is limited.<sup>9</sup> In 2007, the Tokyo Guideline (TG07) was issued as a novel tool for the diagnosis and severity grading for acute cholangitis.<sup>1,10-12</sup> Validation of the diagnostic criteria in real-world practice showed that TG07 lacked sensitivity to identify life-threatening cases.<sup>13,14</sup> The criteria for diagnosis were amended in the Tokyo Guideline 2013 (TG13). Sensitivity improved from 83% (TG07) to 92% (TG13) but did not raise specificity. A high specificity is crucial to not overtreat patients by performing an ERCP too easily which can result in unnecessary complications. The Tokyo Guidelines 2018 (TG18) used the similar definitions as in TG13.<sup>15</sup> The Dutch Pancreatitis Study Group (DPSG) created diagnostic criteria for acute cholangitis in the presence of acute biliary

pancreatitis for the development of the APEC trial, which have never been validated in a cohort composed of patients with or without acute biliary pancreatitis.<sup>16</sup>

Currently, the American and European Society of Gastrointestinal Endoscopy (ASGE and ESGE) guideline on CBD stones recommends performing an ERCP to obtain biliary drainage in case of acute cholangitis determined by TG18.<sup>17</sup> Because an ERCP comes with concomitant risks, it is necessary to have a strong indication,<sup>18-21</sup> however a validation of the TG18 and DPSG criteria is still lacking. In addition, available literature shows us that there is still no evidence-based and a sufficiently accurate guideline of clinical importance.

We aimed to evaluate the diagnostic performance of TG18, DPSG criteria, and the Charcot triad for diagnosing acute cholangitis in patients with (suspected) biliary obstruction, using real-world diagnosis as the reference standard. Additionally, we assessed the performance of the individual criteria used in the guideline.

## 2 | MATERIALS AND METHODS

### 2.1 | Study design

In this study, we did a retrospective analysis of prospective data from a multicenter, parallel-group, open-label, superiority randomized controlled trial performed in the Netherlands.<sup>22</sup> In brief, this trial has evaluated whether aggressive periprocedural hydration with lactated Ringer's solution in addition to the standard prophylactic treatment with rectal non-steroidal anti-inflammatory drugs reduces the risk of post-ERCP pancreatitis in 826 patients at moderate- to high-risk undergoing an ERCP. The institutional research board (Medical Research Ethics Committees United) gave permission to execute the study (NL52341.100.15, W21.171). Performance characteristics

for the diagnostic tools for acute cholangitis were reported according to the Standards for the Reporting of Diagnostic Accuracy Studies (STARD) statement.<sup>23</sup>

## 2.2 | Study population

We included patients aged 18–85 years, from 21 Dutch hospitals, who underwent an ERCP between June 2015 and June 2019 for the indication of cholangitis and/or a (suspected) biliary obstruction. Written informed consent was obtained from all patients. (Suspected) biliary obstruction was defined as: benign stricture of the bile duct, biliary tract adenoma, cholangiocarcinoma, choledocholithiasis, IgG4-cholangiopathy, metastatic cancer, pancreatic adenocarcinoma, papillary stenosis, primary sclerosing cholangitis, and ampulla adenoma or adenocarcinoma. Patients who eventually did not undergo ERCP or had ongoing acute pancreatitis were excluded.

## 2.3 | Data collection

Data were prospectively collected using a standardized data collection form and verified by the study coordinator through patient chart review. These data included: age at the time of the ERCP, sex, body mass index (BMI), the indication of ERCP, and the underlying disease established during ERCP. For this analysis, additional data were abstracted from patient charts for each eligible subject: body temperature (in °C) and/or chills, jaundice (total bilirubin >3 mg/dL<sup>24</sup> or as described in physical examination), abdominal pain in the right upper quadrant, latest biochemical tests and abdominal imaging before ERCP, and antibiotic treatment indicated for cholangitis before ERCP or after ERCP when purulent bile was visualized.

## 2.4 | Study endpoints and definitions

The primary study outcome was the diagnostic performance of various diagnostic tools (TG18, DPSG criteria, and Charcot triad) for acute cholangitis and real-world diagnosis as reference standard. For details regarding these tools see Supplementary Appendix. Since there is no gold standard for the diagnosis of acute cholangitis, the clinical diagnoses made by the treating clinicians were considered to be the real-world diagnoses. The treating clinicians took the following factors into consideration: present illness, physical examinations, laboratory data, diagnostic imaging, and clinical courses. For diagnosis of real-world acute cholangitis a patient should at least have liver test abnormalities and the requirement of antibiotic treatment

according to treating clinicians. This definition is in line with previous performed validation studies.<sup>13,14,25,26</sup> In addition, two investigators (CJSW and CBEB) independently reviewed and evaluated all of these cases. In case of discrepancies between the two investigators, these cases were discussed.

Secondary endpoint included the performance of the individual criteria used in the guideline. In addition, we evaluated in which proportion of the patients with acute cholangitis, who underwent ERCP for (suspected) choledocholithiasis, a biliary obstruction was found during ERCP.

## 2.5 | Statistical analysis

Data of continuous variables are shown as mean with standard deviation (SD) when normally distributed and shown as median with interquartile range (IQR) when not normally distributed. We evaluated whether the treatment center appeared as a confounding factor by using a binary logistic regression model. The diagnostic performance of individual risk stratification of the three diagnostic tools and per individual variable was estimated in terms of sensitivity, specificity, positive predictive value (PPV), negative predictive value (NPV), positive and negative likelihood ratios ( $\pm$ LR), and diagnostic accuracy. For all variables, 95% confidence intervals (CIs) were calculated. The Clopper–Pearson method was used to calculate CIs for sensitivity, specificity, and accuracy. The log method for the likelihood ratio and the standard logit was used for the predictive values. The overall performance scores for the three diagnostic tools was evaluated by estimating the corresponding area under the receiver operator characteristics (ROC) curve. Separate analyses were performed for TG18 definite acute cholangitis and TG18 suspected and definite acute cholangitis combined. We reported the risk ratio (RR) for associations between the individual risk stratification criteria and the final diagnosis of acute cholangitis. This analysis was not possible for the criteria abnormal liver function because nearly all patients met this criterion. A two-sided *P*-value <.05 was considered statistically significant. Statistical analyses were performed using SPSS version 26 (IBM Corp.,) and MedCalc version 19.1.2 (MedCalc Software bv).

## 3 | RESULTS

### 3.1 | Patient selection

Out of the 826 patients enrolled in the FLUYT trial, 27 patients were excluded because the ERCP was performed

for reasons other than a (suspected) biliary obstruction. We excluded five patients because ERCP was ultimately not performed. Consequently, 794 patients were included in this analysis (Figure 1).

### 3.2 | Patient characteristics

Patient characteristics and diagnostic outcomes are displayed in Table 1. At baseline, the median age of patients was 60 years (IQR 46.8-71.7), and 469 (59%) patients were female. The main ERCP indication was suspected choledocholithiasis with or without cholangitis (752 patients (95%)). In the majority of these patients (74%) gallstones were visualized during the ERCP procedure. Among the 139 patients with cholangitis as ERCP indication, the majority of 136 patients (98%) had concomitant choledocholithiasis as indication, two patients (1%) had both cholangitis and cholangiocarcinoma as indication and the remaining patient (1%) had solely cholangitis as indication. Treatment center did not appear to be a confounding factor for the clinical diagnosis of acute cholangitis ( $P = .47$ ).

### 3.3 | Primary and secondary endpoints

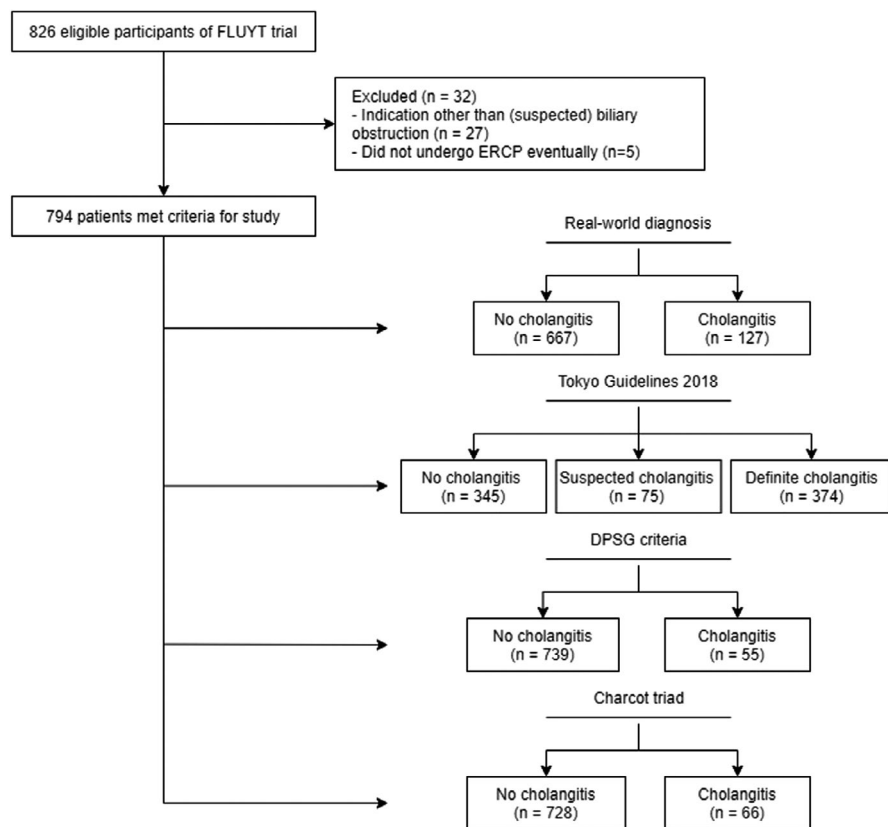
All essential individual criteria per diagnostic tool were available, therefore, we did not make assumptions for

stratifying patients according to the diagnostic tools (see Table S1). In total, 127 patients (16%) were diagnosed with a real-world diagnosis of acute cholangitis. The TG18 reported definite cholangitis in 374 cases (47%). In addition, 75 patients (9%) met the criteria for suspected cholangitis. According to the DPSG criteria, 55 patients (7%) were diagnosed as having acute cholangitis. At last, 66 patients (8%) complied with the definition of cholangitis according to the Charcot triad.

In patients with the indication of choledocholithiasis and classified as having acute cholangitis according to real-world diagnoses, the ERCP showed a biliary obstruction in 77% of the patients (see Table S2). The proportion of patients with a biliary obstruction observed during ERCP was comparable for patients with choledocholithiasis indication but classified according to the TG18 (80%), DPSG criteria (80%), or Charcot triad (83%).

### 3.4 | Diagnostic performance

The accuracy of the different tools in diagnosing acute cholangitis is summarized in Table 2. The sensitivity for the TG18 definite or the combination of TG18 definite and suspected was high (82% (95% CI: 74-88) and 98% (95% CI: 94-100), respectively). Nevertheless, the specificity was low (60% (95% CI: 56-63) and 51% (95% CI: 48-55)). For the DPSG criteria and Charcot triad we found comparable



**FIGURE 1** Patient selection and diagnosis per diagnostic tool. ERCP, endoscopic retrograde cholangiopancreatography. DPSG, Dutch Pancreatitis Study Group

**TABLE 1** Patient characteristics and diagnostic outcomes of study cohort

	<b>Total (n = 794)</b>
Age (years), median (IQR)	59.6 (46.8-71.7)
Female sex	469 (59%)
BMI (kg/m <sup>2</sup> ), median (IQR)	26.8 (23.9-30.3)
Length of hospital stay (days), median (IQR)	2 (1-2)
Indication of ERCP	
Cholelithiasis	752 (95%)
Cholangitis	127 (16%)
Benign stricture bile duct	4 (<1%)
IgG4-cholangiopathy	1 (<1%)
Primary sclerosing cholangitis	4 (<1%)
Biliary tract adenoma	1 (<1%)
Cholangiocarcinoma	14 (2%)
Metastatic cancer	12 (2%)
Pancreatic adenocarcinoma	1 (<1%)
Papillary stenosis	2 (<1%)
Ampullary adenoma	4 (<1%)
Ampullary adenocarcinoma	2 (<1%)
Laboratory tests	
White blood cell count <4 or >10 × 1000/ μL	177 (26%)
C-reactive protein >1.0 mg/dL	377 (57%)
Aspartate aminotransferase >1.5 ULN	155 (23%)
Cholangitis according to at least one criteria	
No	453 (57%)
Yes	341 (43%)
Gallstones on ERCP indicated for cholelithiasis	
No	173 (23%)
Yes	553 (74%)

Note: Number of missing values: BMI, 9 (1%); Length of hospital stay, 2 (<1%); Gallstones on ERCP, 26 (4%); White blood cell count, 125 (16%); C-reactive protein, 133 (17%); Aspartate aminotransferase, 110 (14%).

Abbreviations: BMI, Body Mass Index; ERCP, endoscopic retrograde cholangiopancreatography; IQR, interquartile range; ULN, upper limit of normal.

diagnostic performances with a sensitivity of 42% (95% CI: 33-51) and 47% (95% CI: 38-56), and specificity of 99.7% (95% CI: 99-100) and 99% (95% CI: 98-100), respectively. The PPV for the TG18 (28%) was substantially lower compared to the DPSG criteria (96%) or Charcot triad (89%). The NPV for all the diagnostic tools was above 90%. The accuracy of the Charcot triad and DPSG criteria for diagnosing acute cholangitis was the best (91% and 90%, respectively).

Figure 2 shows the ROC curves for diagnosing acute cholangitis according to the different diagnostic tools.

The area under the curve was the highest for TG18 when combining suspected and definite criteria (0.75; 95% CI: 0.71-0.79). This was followed by the Charcot triad (0.73; 95% CI: 0.67-0.79), TG18 definite cholangitis (0.71; 95% CI: 0.66-0.75), and the DPSG criteria (0.71; 95% CI: 0.65-0.77).

### 3.5 | Association between individual criteria and acute cholangitis

In patients with fever (> 38°C), 84% had a real-world diagnosis of acute cholangitis. This translates into an RR of 26.8 (95% CI, 17.5-41.0) to have cholangitis. A significant association with acute cholangitis was reported in patients with an inflammatory response, defined as leukocytes <4 or >10 × 10<sup>9</sup>/L or C-reactive protein ≥10 mg/L, (RR 9.3; 95% CI, 4.1-20.7), serum bilirubin >2 mg/dL (RR 1.5; 95% CI, 1.1-2.1), jaundice (RR 2.4; 95% CI, 1.7-3.5), and abdominal pain (RR 4.2; 95% CI, 2.9-6.1). CBD dilation (RR 0.98; 95% CI, 0.7-1.4), and obstruction of CBD on imaging (RR 0.9; 95% CI, 0.7-1.2) were not significantly associated with cholangitis. The sensitivity and specificity of all individual criteria are on display in Table 3.

## 4 | DISCUSSION

We found that four out of ten patients would be incorrectly diagnosed with acute cholangitis by applying the TG18. The Charcot triad or DPSG criteria performed worse, and more than half of patients with cholangitis would be misdiagnosed. Nevertheless, all diagnostic tools are able to rule out the diagnosis of cholangitis with a high probability.

This study has several strengths. First, all included patients were participating in a large nationwide prospective multicenter randomized trial.<sup>22</sup> This is the first diagnostic accuracy study evaluating TG in a Western population. Previously performed diagnostic accuracy studies on the TG were all performed in Asia and, therefore, might not be generalizable to the Western population.<sup>27</sup> Furthermore, we included patients with all types of biliary obstructions, not only patients with suspected cholelithiasis. This gives a better representation of the total population at risk for acute cholangitis.

Some limitations of this analysis should be acknowledged. First, there is no known infallible gold standard for diagnosing acute cholangitis. We used real-world diagnosis of cholangitis as the reference standard which might be influenced by interpretation. However, this is in line with previous performed validation studies and we addressed this issue partly by including objective criteria (start of antibiotic treatment for acute cholangitis) as a condition

TABLE 2 Diagnostic performance (with 95% CI) of diagnostic tools for prediction of acute cholangitis

Diagnostic Tool	Sensitivity	Specificity	PPV	NPV	LR+	LR-	Accuracy
TG18 (susp+def)	98 (94-100)	51 (48-55)	28 (26-30)	99 (98-100)	2.03 (1.9-2.2)	0.03 (0.01-0.1)	59 (55-62)
TG18 (def)	82 (74-88)	60 (56-63)	28 (25-30)	95 (92-96)	2.02 (1.8-2.3)	0.3 (0.2-0.4)	63 (60-67)
DPSG	42 (33-51)	99.7 (99-100)	96 (87-99)	90 (89-91)	139 (34.4-563.8)	0.6 (0.5-0.7)	90 (88-92)
Charcot triad	46 (38-56)	99 (98-100)	89 (80-95)	91 (89-92)	44 (20.7-94.7)	0.5 (0.5-0.6)	91 (88-93)

Abbreviations: CI, confidence interval; def, definite; LR-, negative likelihood ratio; LR+, positive likelihood ratio; NPV, negative predictive value; PPV, positive predictive value; susp, suspected; TG18, Tokyo Guideline 2018.

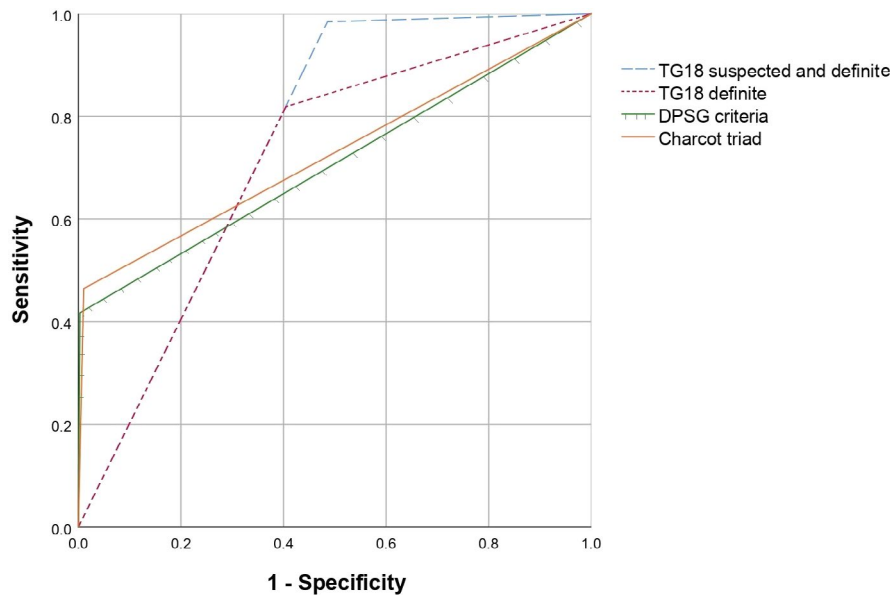


FIGURE 2 Receiver operator characteristics curves of diagnostic tools. TG, Tokyo guideline; DPSG, Dutch Pancreatitis Study Group. Area under the curves: TG18 suspected and definite diagnoses (0.75; 95% CI 0.71-0.79), TG18 definite cholangitis (0.71; 95% CI: 0.66-0.75), the DPSG criteria (0.71; 95% CI: 0.65-0.77), and Charcot triad (0.73; 95% CI: 0.67-0.79)

TABLE 3 Association between individual criteria and real-world cholangitis (prevalence 16%)

	n/N	Cholangitis	Sensitivity (95% CI)	Specificity (95% CI)	RR (95% CI)
Body temperature >38°C	126/794	84%	83 (76-89)	97 (95-98)	26.8 (17.5-41.0)
Inflammatory response <sup>a</sup>	448/659	26%	95 (90-98)	38 (34-43)	9.3 (4.2-20.7)
Total bilirubin >2 mg/dL	418/710	21%	68 (59-76)	43 (39-47)	1.5 (1.1-2.1)
CBD dilation	554/773	16%	69 (60-77)	30 (27-34)	0.98 (0.7-1.4)
Obstruction of CBD on imaging	501/773	15%	61 (52-69)	36 (33-40)	0.90 (0.65-1.25)
Jaundice	399/786	23%	71 (63-79)	53 (49-57)	2.42 (1.69-3.48)
Abdominal pain	329/792	29%	75 (66-82)	65 (61-68)	4.18 (2.87-6.08)

Abbreviations: CBD, common bile duct; CI, confidence interval; n, number of cases; N, total number of cases; RR, risk ratio.

<sup>a</sup>Inflammatory response: Leukocytes <4 or >10 × 10<sup>9</sup>/L or C-reactive protein ≥1 mg/dL.

of our reference standard.<sup>13,14,25,26</sup> In addition, our study population consists of patients all undergoing an ERCP. Even though the ERCP is the preferred manner for achieving biliary drainage, not all patients with a cholangitis will eventually be treated with an ERCP. This supposedly is a minority of patients, but these patients were not portrayed in our cohort. Secondly, we might underestimate patients

scored as having acute cholangitis according to the DPSG and Charcot criteria. This could be due to the early start of antibiotic treatment in the emergency department, which potentially suppressed the inflammatory response and body temperature during hospital admission.

The TG18 shows an acceptable sensitivity (82%) and a moderate specificity (60%) in diagnosing definite

cholangitis. Recently, a retrospective study performed in Japan and Taiwan, compared TG13 and TG07 in a cohort of patients with real-world acute cholangitis.<sup>25</sup> Here the TG13 diagnostic criteria possessed a superior diagnostic ability to diagnose acute cholangitis (90% (TG13) vs. 79% (TG07); ( $P < .0001$ )). Another study yielded similar results as our study and achieved a sensitivity of 84% (TG13) and 51% (Charcot triad).<sup>28</sup> This study enrolled cases with an acute cholangitis on the basis of purulent bile visualized during ERCP. The threshold for cholangitis is perhaps too high as purulent bile is not universally present in acute cholangitis cases.

In clinical practice, acute cholangitis is a clear indication to perform an ERCP according to the ESGE guideline.<sup>17</sup> The handling of the TG18 as a diagnostic tool will possibly result in unnecessary ERCs in 20% of the patients with concomitant suspicion of CBD stones (see Table S2). Thereby, disregarding the ERCP-related complications that can occur, such as post-ERCP pancreatitis (3.5%-9.7%), bleeding (0.3%-9.6%), perforation (0.08%-0.6%), and anesthesia-related adverse events (0.02%).<sup>18-21</sup> Acute cholangitis has a broad clinical presentation and is, therefore, difficult to capture in a diagnostic guideline. Additional imaging with endoscopic ultrasound (EUS) or magnetic resonance cholangiopancreatography (MRCP) might be a less invasive alternative for initial evaluation and to assess the need for ERCP in these patients. As is shown through available literature and current practice, there is no sufficiently accurate guideline of clinical importance for acute cholangitis. We reported a significant overtreatment with antibiotics and/or ERCP when applying TG18, while Charcot triad and DPSG criteria lead to untreated cholangitis patients. Nevertheless, all the diagnostic tools are useful to rule out acute cholangitis due to their high NPVs. The high PPVs of the DPSG, and to a lesser extent of the Charcot triad, allow clinicians to confirm with considerable certainty the diagnosis of acute cholangitis.

Future research to improve and validate the existing guidelines should be executed in a prospective design, in which microbiological analysis and severity grading of cholangitis should be taken into account. By focusing on developing a new diagnostic tool, it should be taken into account that we found five of the individual diagnostic criteria (fever, total bilirubin  $>2$  mg/dL, inflammatory response, jaundice, and abdominal pain) to be statistically significantly associated with acute cholangitis. Most of these criteria are in line with the recently suggested BILE criteria (Biliary abnormalities or intervention, Inflammatory marker elevation, Liver tests abnormalities, and Exclusion of cholecystitis and acute pancreatitis) to identify patients with high probability of cholangitis.<sup>29</sup> Additionally, it would be meaningful to focus on an

indicator to optimize timing of biliary drainage in subgroups of patients with cholangitis.

In conclusion, the international guidelines recommend to perform directly prompt ERCP in patients with a clinical ascending cholangitis. However, the use of TG18, DPSG, or Charcot triad as a conclusive diagnostic tool will lead to a high number of incorrectly diagnosed (TG18) or missed acute cholangitis patients (DPSG/Charcot). It can help clinicians to rule out (TG18) or confirm acute cholangitis (DPSG and Charcot). Nevertheless, we advise clinicians to consider to perform additional imaging, by EUS or MRCP, before ERCP in patients with acute cholangitis.

## CONFLICT OF INTEREST

Authors declare no conflict of interests for this article.

## AUTHOR CONTRIBUTIONS

All authors meet all four criteria for authorship: (a) Substantial contributions to the conception or design of the work, or acquisition, analysis or interpretation of data for the work; (b) Drafting the work or revising it critically for important intellectual content; (c) Final approval of the version to be published; (d) Agreement to be accountable for all aspects of the work in ensuring that questions related to the accuracy or integrity of any part of the work are appropriately investigated and resolved.

## DATA AVAILABILITY STATEMENT

Request for data can be made to the corresponding author and will be discussed during a meeting of the Dutch Pancreatitis Study Group. Individual participant data that underlie the results reported in this article, after de-identification, will be shared after approval of the Dutch Pancreatitis Study Group.

## ORCID

Christina J. Sperna Weiland  <https://orcid.org/0000-0001-6124-6256>

Hester C. Timmerhuis  <https://orcid.org/0000-0001-5714-4951>

## REFERENCES

1. Wada K, Takada T, Kawarada Y, Nimura Y, Miura F, Yoshida M, et al. Diagnostic criteria and severity assessment of acute cholangitis: Tokyo guidelines. *J Hepatobiliary Pancreat Surg.* 2007;14(1):52-8.
2. Ahmed M. Acute cholangitis - an update. *World J Gastrointest Pathophysiol.* 2018;9(1):1-7.
3. Andrew D, Johnson S. Acute suppurative cholangitis, a medical and surgical emergency. A review of ten years experience emphasizing early recognition. *Am J Gastroenterol.* 1970;54(2):141-54.
4. Kinney TP. Management of ascending cholangitis. *Gastrointest Endosc Clin N Am.* 2007;17(2):289-306.



5. Iqbal U, Khara HS, Hu Y, Khan MA, Ovalle A, Siddique O, et al. Emergent versus urgent ERCP in acute cholangitis: a systematic review and meta-analysis. *Gastrointest Endosc.* 2020;91(4):753–760.e4.
6. Du L, Cen M, Zheng X, Luo L, Siddiqui A, Kim JJ. Timing of performing endoscopic retrograde cholangiopancreatography and inpatient mortality in acute cholangitis: a systematic review and meta-analysis. *Clin Transl Gastroenterol.* 2020;11(3):e00158.
7. Seo YJ, Hadaya J, Sareh S, Aguayo E, de Virgilio CM, Benharash P. National trends and outcomes in timing of ERCP in patients with cholangitis. *Surg (United States).* 2020;168(3):426–33.
8. Charcot M. De la fièvre hépatique symptomatique. Comparaison avec la fièvre uroséptique. *Leçons sur les Mal du foie des voies biliaires des reins.* 1877; Paris: Bou.
9. Rumsey S, Winders J, MacCormick AD. Diagnostic accuracy of Charcot's triad: a systematic review. *ANZ J Surg.* 2017;87(4):232–8.
10. Mayumi T, Takada T, Kawarada Y, Nimura Y, Yoshida M, Sekimoto M, et al. Results of the Tokyo consensus meeting Tokyo guidelines. *J Hepatobiliary Pancreat Surg.* 2007;14(1):114–21.
11. Tsuyuguchi T, Takada T, Kawarada Y, Nimura Y, Wada K, Nagino M, et al. Techniques of biliary drainage for acute cholangitis: Tokyo guidelines. *J Hepatobiliary Pancreat Surg.* 2007;14(1):35–45.
12. Miura F, Takada T, Kawarada Y, Nimura Y, Wada K, Hirota M, et al. Flowcharts for the diagnosis and treatment of acute cholangitis and cholecystitis: Tokyo guidelines. *J Hepatobiliary Pancreat Surg.* 2007;14(1):27–34.
13. Yokoe M, Takada T, Mayumi T, Yoshida M, Hasegawa H, Norimizu S, et al. Accuracy of the Tokyo Guidelines for the diagnosis of acute cholangitis and cholecystitis taking into consideration the clinical practice pattern in Japan. *J Hepatobiliary Pancreat Sci.* 2011;18(2):250–7.
14. Fujii Y, Ohuchida J, Chijiwa K, Yano K, Imamura N, Nagano M, et al. Verification of Tokyo guidelines for diagnosis and management of acute cholangitis. *J Hepatobiliary Pancreat Sci.* 2012;19(4):487–91.
15. Kiriya S, Kozaka K, Takada T, Strasberg SM, Pitt HA, Gabata T, et al. Tokyo Guidelines 2018: diagnostic criteria and severity grading of acute cholangitis (with videos). *J Hepatobiliary Pancreat Sci.* 2018;25(1):17–30.
16. Schepers NJ, Hallensleben NDL, Besselink MG, Anten MPGF, Bollen TL, da Costa DW, et al. Urgent endoscopic retrograde cholangiopancreatography with sphincterotomy versus conservative treatment in predicted severe acute gallstone pancreatitis (APEC): a multicentre randomised controlled trial. *Lancet.* 2020;396(10245):167–76.
17. Manes G, Paspatis G, Aabakken L, Anderloni A, Arvanitakis M, Ah-Soune P, et al. Endoscopic management of common bile duct stones: European Society of Gastrointestinal Endoscopy (ESGE) guideline. *Endoscopy.* 2019;51(5):472–91.
18. Andriulli A, Loperfido S, Napolitano G, Niro G, Valvano MR, Spirito F, et al. Incidence rates of post-ERCP complications: a systematic survey of prospective studies. *Am J Gastroenterol.* 2007;102(8):1781–8.
19. Kochar B, Akshintala VS, Afghani E, Joseph Elmunzer B, Kim KJ, Lennon AM, et al. Incidence, severity, and mortality of post-ERCP pancreatitis: a systematic review by using randomized, controlled trials. *Gastrointest Endosc.* 2015;81(1):143–149.e9.
20. Dumonceau JM, Kapral C, Aabakken L, Papanikolaou IS, Tringali A, Vanbiervliet G, et al. ERCP-related adverse events: European Society of Gastrointestinal Endoscopy (ESGE) guideline. *Endoscopy.* 2020;52(2):127–49.
21. Chandrasekhara V, Khashab MA, Muthusamy VR, Acosta RD, Agrawal D, Bruining DH, et al. Adverse events associated with ERCP. *Gastrointest Endosc.* 2017;85(1):32–47.
22. Serna Weiland CJ, Smeets XJNM, Kievit W, Verdonk RC, Poen AC, Bhalla A, et al. Aggressive fluid hydration plus non-steroidal anti-inflammatory drugs versus non-steroidal anti-inflammatory drugs alone for post-endoscopic retrograde cholangiopancreatography pancreatitis (FLUYT): a multicentre, open-label, randomised, controlled trial. *Lancet Gastroenterol Hepatol.* 2021;1253(21):1–9.
23. Bossuyt PM, Reitsma JB, Bruns DE, Bruns DE, Glasziou PP, Irwig L, et al. STARD 2015: an updated list of essential items for reporting diagnostic accuracy studies. *Radiology.* 2015;277(3):826–32.
24. Roche SP, Kobos R. Jaundice in the adult patient. *Am Fam Physician.* 2004;69(2):299–304.
25. Kiriya S, Takada T, Hwang TL, Akazawa K, Miura F, Gomi H, et al. Clinical application and verification of the TG13 diagnostic and severity grading criteria for acute cholangitis: an international multicenter observational study. *J Hepatobiliary Pancreat Sci.* 2017;24(6):329–37.
26. Gomi H, Takada T, Hwang T-L, Akazawa K, Mori R, Endo I, et al. Updated comprehensive epidemiology, microbiology, and outcomes among patients with acute cholangitis. *J Hepatobiliary Pancreat Sci.* 2017;24(6):310–8.
27. Sperling RM, Koch J, Sandhu JS, Cello JP. Recurrent pyogenic cholangitis in Asian immigrants to the United States: natural history and role of therapeutic ERCP. *Dig Dis Sci.* 1997;42(4):865–71.
28. Sun G, Han L, Yang Y, Linghu E, Li W, Cai F, et al. Comparison of two editions of Tokyo guidelines for the management of acute cholangitis. *J Hepatobiliary Pancreat Sci.* 2014;21(2):113–9.
29. Buxbaum J, Qumseya B, Wani S. Toward an evidence-based approach for cholangitis diagnosis. *Gastrointest Endosc.* 2021;94(2):297–302.e2.

## SUPPORTING INFORMATION

Additional supporting information may be found in the online version of the article at the publisher's website.

**How to cite this article:** Serna Weiland CJ, Busch CBE, Bhalla A, Bruno MJ, Fockens P, van Hooft JE, et al; the Dutch Pancreatitis Study Group. Performance of diagnostic tools for acute cholangitis in patients with suspected biliary obstruction. *J Hepatobiliary Pancreat Sci.* 2022;29:479–486. <https://doi.org/10.1002/jhbp.1096>