

EUR Research Information Portal

Assessment of human leukocyte antigen matching algorithm PIRCHE-II on liver transplantation outcomes

Published in:
Liver Transplantation

Publication status and date:
Published: 01/08/2022

DOI (link to publisher):
[10.1002/lt.26431](https://doi.org/10.1002/lt.26431)

Document Version
Publisher's PDF, also known as Version of record

Document License/Available under:
CC BY-NC

Citation for the published version (APA):

Kok, G., Verstegen, M. M. A., Houwen, R. H. J., Nieuwenhuis, E. E. S., Metselaar, H. J., Polak, W. G., van der Laan, L. J. W., Spierings, E., den Hoed, C. M., & Fuchs, S. A. (2022). Assessment of human leukocyte antigen matching algorithm PIRCHE-II on liver transplantation outcomes. *Liver Transplantation*, 28(8), 1356-1366. <https://doi.org/10.1002/lt.26431>

[Link to publication on the EUR Research Information Portal](#)

Terms and Conditions of Use

Except as permitted by the applicable copyright law, you may not reproduce or make this material available to any third party without the prior written permission from the copyright holder(s). Copyright law allows the following uses of this material without prior permission:

- you may download, save and print a copy of this material for your personal use only;
- you may share the EUR portal link to this material.

In case the material is published with an open access license (e.g. a Creative Commons (CC) license), other uses may be allowed. Please check the terms and conditions of the specific license.

Take-down policy

If you believe that this material infringes your copyright and/or any other intellectual property rights, you may request its removal by contacting us at the following email address: openaccess.library@eur.nl. Please provide us with all the relevant information, including the reasons why you believe any of your rights have been infringed. In case of a legitimate complaint, we will make the material inaccessible and/or remove it from the website.

ORIGINAL ARTICLE

Assessment of human leukocyte antigen matching algorithm PIRCHE-II on liver transplantation outcomes

Gautam Kok¹ | Monique M. A. Verstegen² | Roderick H. J. Houwen³ | Edward E. S. Nieuwenhuis³ | Herold J. Metselaar⁴ | Wojciech G. Polak² | Luc J. W. van der Laan² | Eric Spierings⁵ | Caroline M. den Hoed⁴ | Sabine A. Fuchs¹

¹Department of Metabolic Diseases, Wilhelmina Children's Hospital, University Medical Center Utrecht, Utrecht, The Netherlands

²Department of Surgery, Division of Hepatopancreatobiliary and Transplant Surgery, Erasmus Medical Center Transplant Institute, University Medical Center Rotterdam, Rotterdam, The Netherlands

³Department of Pediatric Gastroenterology, Wilhelmina Children's Hospital, University Medical Center Utrecht, Utrecht, The Netherlands

⁴Department of Gastroenterology & Hepatology, Erasmus Medical Center Transplant Institute, University Medical Center Rotterdam, Rotterdam, The Netherlands

⁵Center of Translational Immunology, University Medical Center Utrecht, Utrecht, The Netherlands

Earn MOC for this article: www.wileyhealthlearning.com/aasld.aspx

Correspondence

Sabine A. Fuchs, Department of Metabolic Diseases, Wilhelmina Children's Hospital, University Medical Center Utrecht, Lundlaan 6, 3584 EA Utrecht, The Netherlands. Email: s.fuchs@umcutrecht.nl

Funding information

This study was financially supported by Stichting Metakids (to Sabine A. Fuchs) and The Netherlands Organization for Health Research and Development (ZonMW TAS grant [project number: 116002008] and Clinical Fellow grant [project number: 90714537] to Sabine A. Fuchs). The funding sources had no influence on the design, implementation, reporting, and publishing of this study.

Abstract

For liver transplantations, human leukocyte antigen (HLA) matching is not routinely performed because observed effects have been inconsistent. Nevertheless, long-term liver transplantation outcomes remain suboptimal. The availability of a more precise HLA-matching algorithm, Predicted Indirectly Recognizable HLA Epitopes II (PIRCHE-II), now enables robust assessment of the association between HLA matching and liver transplantation outcomes. We performed a single-center retrospective cohort study of 736 liver transplantation patients. Associations between PIRCHE-II and HLAMatchmaker scores and mortality, graft loss, acute and chronic rejection, ischemic cholangiopathy, and disease recurrence were evaluated with Cox proportional hazards models. Associations between PIRCHE-II with 1-year, 2-year, and 5-year outcomes and severity of acute rejection were assessed with logistic and linear regression analyses, respectively. Subgroup analyses were performed for autoimmune and nonautoimmune indications, and patients aged 30 years and younger, and older than 30 years. PIRCHE-II and HLAMatchmaker scores were not associated with any of the outcomes. However, patients who received transplants for autoimmune disease showed more acute rejection and graft loss, and these risks negatively associated with age. Rhesus mismatch more than doubled the risk of disease recurrence. Moreover, PIRCHE-II was inversely associated with graft loss in the subgroup of patients aged 30 years and younger with autoimmune indications. The absence of associations between PIRCHE-II and HLAMatchmaker scores and the studied outcomes refutes the need for HLA matching for liver (stem cell) transplantations for nonautoimmune disease. For

Abbreviations: ABO, blood type; aHR, adjusted hazard ratio; CI, confidence interval; dnDSA, de novo donor-specific antibody; DSA, donor-specific antibody; HLA, human leukocyte antigen; HR, hazard ratio; MMF, mycophenolate mofetil; PIRCHE-II, Predicted Indirectly Recognizable HLA Epitopes; RAI, rejection activity index.

Eric Spierings and Caroline M. den Hoed contributed equally to this work.

This is an open access article under the terms of the [Creative Commons Attribution-NonCommercial](https://creativecommons.org/licenses/by-nc/4.0/) License, which permits use, distribution and reproduction in any medium, provided the original work is properly cited and is not used for commercial purposes.

© 2022 The Authors. *Liver Transplantation* published by Wiley Periodicals LLC on behalf of American Association for the Study of Liver Diseases.

autoimmune disease, the activated immune system seems to increase risks of acute rejection and graft loss. Our results may suggest the benefits of transplantations with rhesus matched but PIRCHE-II mismatched donor livers.

INTRODUCTION

Human leukocyte antigen (HLA) matching has reduced incidences of acute and chronic rejection and improved allograft survival for various types of organ transplantations, including kidney,^[1–4] heart,^[5] and bone marrow transplantation.^[6] In contrast, studies on liver transplantation repeatedly demonstrated conflicting results,^[7–12] which has resulted in the current clinical practice of matching liver donor and recipients only by blood group and not HLA compatibility. Short-term outcomes of liver transplantation are currently very good, but long-term outcomes remain suboptimal, partially because of the long-term use of immunosuppressants.^[13] Better donor–recipient matching holds the potential to improve transplantation outcomes but is hampered by the shortage of donor grafts. With the prospect of biobankable liver cell sources, including human liver organoids and stem cells, the question of whether HLA matching could improve the survival of allogeneic cells or tissue constructs is becoming increasingly relevant.^[14]

In recent years, more precise methods for HLA matching have been developed. Multiple studies suggest that epitope-based matching algorithms such as HLAMatchmaker^[15–17] may predict graft outcome in kidney,^[18] lung,^[19] cornea,^[20] pediatric heart,^[21] and pediatric liver transplantation.^[22] Epitopes are parts of HLA molecules that may be present on different HLA antigens. Eplets, small polymorphisms on the outer domains of HLA molecules that differ between donor and recipient, are identified by HLAMatchmaker and presented in a continuous score.^[15–17] In addition to the B cell–mediated immune response, T cell–mediated alloreactivity plays a role after solid organ transplantation. The direct pathway comprises T cell recognition of allogeneic HLA molecules on the surface of allogeneic cells. In the indirect pathway, T cells recognize mismatched HLA-derived epitopes processed and presented by nonallogeneic cells. Indirect T cell alloreactivity plays an important role in the humoral response toward HLA. Identification of these indirectly recognizable epitopes provides an alternative to epitope-based matching, which is what the Predicted Indirectly Recognizable HLA Epitopes (PIRCHE-II) algorithm does.^[23] This algorithm can estimate the likelihood of HLA-derived peptides to bind HLA class II molecules (HLA-DR, HLA-DQ, and HLA-DP).^[24] PIRCHE-II was found to correlate with kidney graft loss^[25] and provides a risk classification for the anti-HLA de novo donor-specific

antibody (dnDSA) formation after kidney,^[26–28] pancreas,^[28,29] and liver transplantations.^[30,31]

Unfortunately, the results from the aforementioned studies investigating these algorithms for liver transplantation have limited use for clinical practice because they were limited in size and inclusion criteria^[22] or only investigated anti-HLA donor-specific antibody (DSA) formation, but no clinical outcomes.^[30,31] Also, previous studies generally grouped recipients with immunological (autoimmune) and other transplantation indications. Yet, mismatching may theoretically decrease disease recurrence and improve allograft survival in patients with autoimmune liver disease.^[32] In general, the activity of the immune system may play a role in rejection reactions. The interplay between a more active immune system in younger patients and the use of immunosuppressants may influence and/or mask the effects of matching.^[33] Therefore, we performed a single-center retrospective cohort study that included 736 patients who underwent primary liver transplantation to evaluate the predictive value of PIRCHE-II scores on liver transplantation outcomes in recipients of varying ages with autoimmune and other liver diseases.

PATIENTS AND METHODS

Study design and patients

We retrospectively included all consecutive adult patients who received a primary liver transplantation in the Erasmus Medical Center, Rotterdam, The Netherlands, between January 1, 2000, and June 30, 2019. Patients for whom HLA typing of donor and recipient were unavailable and patients who received combined liver and kidney transplantation were excluded. We used electronic patient records to collect patient and donor characteristics, including transplantation indication, immune serology, blood group and HLA typing, surgery details, immunosuppressant use, and follow-up markers. The selected timeframe allowed for a minimum follow-up of 1 year. As part of the standard care, all patients were seen at least once a year. The date of the last visit was considered the latest follow-up.

PIRCHE-II and HLAMatchmaker scores

Patients and donors were typed for their HLA by molecular typing methods as per transplant protocol. Typings

were reported at the serological split level for all loci following the EuroTransplant guidelines. If HLA-C and/or HLA-DQ were missing (see Table S1), typings for these loci were imputed for epitope calculations as previously reported.^[34] PIRCHE-II scores for donor-recipient matches were calculated using the PIRCHE-II Matching Service (Pirche AG) in February 2021 as described previously.^[25] Because PIRCHE-II and antibody formation are logarithmically correlated,^[26] PIRCHE-II scores were transformed by natural logarithm ($\ln(\text{PIRCHE-II} + 1)$) for further analyses. For comparison, HLA Matchmaker scores were calculated using HLA Matchmaker (Version 2.0).

Outcome measures

Primary outcomes included histology-confirmed acute rejection (defined as rejection activity index [RAI] >2), histology-confirmed chronic rejection, radiology-confirmed ischemic cholangiopathy, graft loss (defined as retransplantation or graft-related death), and mortality (all cause except procedure related). Disease recurrence (except malignancies) was a secondary outcome. Follow-up ended if the patient received another transplantation (e.g., kidney) or a retransplantation, if the patient died or was lost to follow-up, or at the last check of the electronic patient records.

Statistical analyses

All statistical analyses were performed with R (Version 4.0.5; R Foundation for Statistical Computing) packages tableone (0.12.0), survival (3.2–11), survminer (0.4.9), and lmtest (0.9–38). All continuous variables were checked for normal distribution. Kaplan–Meier curves were used to visualize the effect of $\ln(\text{PIRCHE-II})$, divided into quartiles, on patient survival and graft survival, and log-rank was used to test for significant differences.

For each of the primary outcomes, univariate Cox proportional hazards models with recipient and donor age and sex, ischemia times, ABO and rhesus mismatches, and $\ln(\text{PIRCHE-II})$ as covariates to determine independent risk factors were used. In addition, multivariable Cox proportional hazards models were used, correcting for recipient and donor age and sex, ABO and rhesus mismatches, and autoimmune indication (primary sclerosing cholangitis, primary biliary cirrhosis, acute/chronic autoimmune hepatitis). In these multivariable models, interactions between $\ln(\text{PIRCHE-II})$ and the most common individual induction therapies (steroids, mycophenolate mofetil [MMF], tacrolimus, cyclosporin, and basiliximab) were tested. Subgroup analyses were performed for patients with autoimmune indications and nonautoimmune indications and for autoimmune indications in combination with age 30 years and younger.

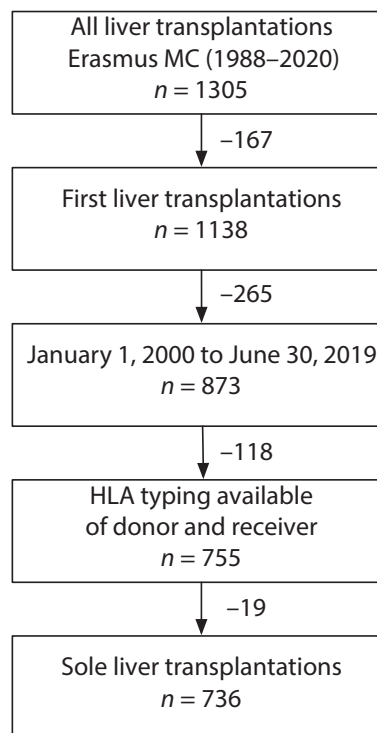


FIGURE 1 Flowchart of inclusion strategy

For both univariate and multivariable analyses, adjusted hazard ratios (aHRs) or hazard ratios (HRs) with 95% confidence intervals (95% CIs) were calculated. The likelihood ratio test was used to determine the significance of interactions. Logistic regression analyses were performed to test the associations between $\ln(\text{PIRCHE-II})$ and the primary outcomes after 1 year, 2 years, and 5 years of follow-up. Linear regression analysis was used to determine if there was an effect of $\ln(\text{PIRCHE-II})$ on the severity of acute rejection (RAI score).

RESULTS

Study population

In the selected timeframe, a total of 873 primary liver transplantations were performed. Of these, 118 patients were excluded because of missing donor or recipient HLA typing, and a further 19 patients were excluded because they received combined liver and kidney transplantations. As a result, a total of 736 patients were included in this study (Figure 1).

The mean age of the recipients was 50.94 ± 12.26 years, and 479 (65.1%) were men. The untransformed PIRCHE-II and HLA Matchmaker scores had means of 85.88 ± 42.97 and 39.48 ± 12.45 , respectively, and were significantly correlated (coefficient = 0.27, $p < 0.001$; Figure S1). Among the most common indications for transplantation were autoimmune diseases (229, 31.1%) followed by viral chronic active hepatitis (156, 21.2%)

and alcohol-induced cirrhosis (115, 15.6%). In addition to the primary disease, 215 patients (29.2%) were diagnosed with hepatocellular carcinoma, and 10 (1.4%) with cholangiocarcinoma (of which 8 had primary sclerosing cholangitis). Mean follow-up was 5.98 ± 5.47 years. Most patients retained their donor liver and were alive at the end of follow-up (438, 59.5%). The rest had died (181, 24.6%), received retransplants (86, 11.7%), or received another solid organ transplantation (9, 1.2%). A total of 22 patients (3.0%) were lost to follow-up, with a mean time to loss of follow-up of 6.82 ± 5.27 years. Except ischemia times and perioperative blood loss, all continuous variables were normally distributed. All baseline characteristics are summarized in Tables 1–4. The number of patients analysed (slashed) for each variable may differ from the total number of patients per (sub)group due to missing data or loss to follow-up.

Analyses

Patient survival and graft survival did not differ between quartiles of ln(PIRCHE-II) scores (Figure 2A,B) nor did acute and chronic rejection (Figure 2C,D).

In univariable analyses, the continuous ln(PIRCHE-II) and HLA-Matchmaker scores were not associated with the primary outcomes mortality, graft loss, acute rejection, chronic rejection, and ischemic cholangiopathy (Tables 5 and 6). Recipient age was independently associated with mortality (HR = 1.03, 95% CI = 1.02–1.05, $p < 0.001$; see Figure S2 for causes of death), graft loss (HR = 0.98, 95% CI = 0.96–0.99, $p = 0.002$), and acute rejection (HR = 0.98, 95% CI = 0.97–0.99, $p = 0.001$). Likewise, an autoimmune transplantation indication was independently associated with mortality (HR = 0.65, 95% CI = 0.48–0.89, $p = 0.008$; see Figure S3 for causes

of death), graft loss (HR = 1.47, 95% CI = 1.01–2.14, $p = 0.04$; see Table S2 for causes of graft loss), and acute rejection (HR = 1.74, 95% CI = 1.32–2.30, $p < 0.001$). Both were not independently associated with chronic rejection, ischemic cholangiopathy, or disease recurrence.

Logistic regression analyses revealed no associations between ln(PIRCHE-II) and any of the primary outcomes after 1 year, 2 years, and 5 years of follow-up (Table 7). Furthermore, ln(PIRCHE-II) was not correlated with severity of acute rejection, classified as RAI score, as determined by linear regression (coefficient = 0.22, $p = 0.23$).

Similarly, ln(PIRCHE-II) and HLA-Matchmaker scores were not associated with any of the primary outcomes in multivariable analyses. However, in the ln(PIRCHE-II) models, recipient age was correlated with an increased risk of mortality (aHR = 1.03, 95% CI = 1.02–1.05, $p < 0.001$), yet decreased risks of graft loss (aHR = 0.98, 95% CI = 0.97–1.00, $p = 0.01$) and acute rejection (aHR = 0.99, 95% CI = 0.98–1.00, $p = 0.02$). Rhesus mismatch led to an increased risk of ischemic cholangiopathy (aHR = 2.19, 95% CI = 1.11–4.34, $p = 0.03$). Those who received transplants for autoimmune indications were at an increased risk of acute rejection (aHR = 1.63, 95% CI = 1.22–2.19, $p = 0.001$).

Subgroup analyses:

Autoimmune and nonautoimmune indications

Multivariable subgroup analyses revealed no statistically significant associations between ln(PIRCHE-II) and any of the primary outcomes both for transplantations for autoimmune indications ($n = 229$) and transplantations for nonautoimmune indications ($n = 507$). Likewise, no associations between HLA-Matchmaker

TABLE 1 General baseline characteristics divided by PIRCHE-II quartiles

	PIRCHE-II and ln(PIRCHE-II) quartiles				<i>p</i>
	[0, 55.5]	(55.5, 78.2]	(78.2, 108]	(108, 273]	
Baseline characteristics, general	<i>n</i> = 184	<i>n</i> = 185	<i>n</i> = 183	<i>n</i> = 184	
Follow-up, years, median [range]	4.01 [0.00, 20.06]	4.85 [0.00, 20.54]	4.32 [0.00, 20.57]	4.24 [0.00, 20.53]	0.52
Reason for end of follow-up, <i>n</i> (%)					0.83
Alive	111 (60.3)	111 (60.0)	99 (54.1)	117 (63.6)	
Deceased	44 (23.9)	44 (23.8)	50 (27.3)	43 (23.4)	
Loss to follow-up	7 (3.8)	6 (3.2)	5 (2.7)	4 (2.2)	
Other Tx	1 (0.5)	4 (2.2)	2 (1.1)	2 (1.1)	
Re-Tx	21 (11.4)	20 (10.8)	27 (14.8)	18 (9.8)	
PIRCHE-II score, mean (SD)	38.98 (11.87)	66.85 (6.67)	92.40 (8.20)	145.44 (31.25)	<0.001
HLA-Matchmaker score, mean (SD)	36.34 (18.00)	38.52 (10.64)	39.22 (9.36)	43.84 (8.21)	<0.001

Abbreviations: ln(PIRCHE-II), natural logarithm of PIRCHE-II+1; PIRCHE-II, Predicted Indirectly Recognizable HLA Epitopes II; SD, standard deviation; Tx, transplantation.

TABLE 2 Donor and recipient baseline characteristics divided by PIRCHE-II quartiles

Baseline characteristics, donor and recipient	PIRCHE-II and ln(PIRCHE-II) quartiles				p
	[0, 55.5]	(55.5, 78.2]	(78.2, 108]	(108, 273]	
	[0, 4.03]	(4.03, 4.37]	(4.37, 4.69]	(4.69, 5.61]	
	n = 184	n = 185	n = 183	n = 184	
Donor					
Age, years, mean (SD)	51.29 (15.65)	46.89 (15.52)	49.53 (15.69)	48.76 (14.82)	0.05
Sex, male, n (%)	101/184 (54.9)	88/185 (47.6)	88/183 (48.1)	99/184 (53.8)	0.36
Recipient					
Age, years, mean (SD)	50.03 (13.20)	51.29 (11.67)	51.43 (12.35)	51.01 (11.81)	0.70
Sex, male, n (%)	116/184 (63.0)	115/185 (62.2)	124/183 (67.8)	124/184 (67.4)	0.56
BMI, mean (SD)	26.18 (4.65)	25.62 (4.34)	25.76 (4.25)	26.00 (4.46)	0.62
MELD score at Tx, mean (SD)	22.87 (7.23)	23.19 (7.30)	22.25 (6.84)	23.38 (7.28)	0.59
Primary Tx indication, n(%)					0.02
Acute liver failure: autoimmune	2 (1.1)	7 (3.8)	0 (0.0)	0 (0.0)	
Acute liver failure: e.c.i.	6 (3.3)	2 (1.1)	4 (2.2)	2 (1.1)	
Acute liver failure: other	1 (0.5)	0 (0.0)	0 (0.0)	1 (0.5)	
Acute liver failure: viral	3 (1.6)	2 (1.1)	3 (1.6)	5 (2.7)	
Biliary atresia	0 (0.0)	0 (0.0)	1 (0.5)	1 (0.5)	
Budd–Chiari syndrome	0 (0.0)	1 (0.5)	2 (1.1)	1 (0.5)	
Chronic-active hepatitis: autoimmune	10 (5.4)	7 (3.8)	6 (3.3)	6 (3.3)	
Chronic-active hepatitis: viral	33 (17.9)	36 (19.5)	35 (19.1)	52 (28.3)	
Cryptogenic cirrhosis	11 (6.0)	13 (7.0)	14 (7.7)	16 (8.7)	
Genetic/metabolic disease	12 (6.5)	13 (7.0)	15 (8.2)	14 (7.6)	
Nonalcoholic steatohepatitis	14 (7.6)	9 (4.9)	4 (2.2)	12 (6.5)	
Polycystic liver disease	2 (1.1)	10 (5.4)	5 (2.7)	6 (3.3)	
Primary biliary cirrhosis	3 (1.6)	10 (5.4)	4 (2.2)	10 (5.4)	
Primary liver tumor, n (%)	0 (0.0)	5 (2.7)	1 (0.5)	1 (0.5)	
Primary sclerosing cholangitis, n (%)	49 (26.6)	43 (23.2)	43 (23.5)	29 (15.8)	
Secondary biliary cirrhosis, n (%)	3 (1.6)	1 (0.5)	2 (1.1)	3 (1.6)	
Toxic: alcohol induced, n (%)	29 (15.8)	24 (13.0)	40 (21.9)	22 (12.0)	
Toxic: drug induced, n (%)	3 (1.6)	2 (1.1)	3 (1.6)	2 (1.1)	
Other, n (%)	3 (1.6)	0 (0.0)	1 (0.5)	1 (0.5)	

Abbreviations: BMI, body mass index; e.c.i., et cause ignora; ln(PIRCHE-II), natural logarithm of PIRCHE-II+1; MELD, Model for End-Stage Liver Disease; PIRCHE-II, Predicted Indirectly Recognizable HLA Epitopes II; SD, standard deviation; Tx, transplantation.

score and any of the primary outcomes were found in these subgroups. Furthermore, ln(PIRCHE-II) and HLA Matchmaker scores were not associated with disease recurrence in either subgroup.

As in the full cohort, the association between age and mortality remained intact in both subgroups (autoimmune: aHR = 1.04, 95% CI = 1.01–1.07, $p = 0.003$; nonautoimmune: aHR = 1.03, 95% CI = 1.01–1.05, $p < 0.001$). However, the association with graft loss remained only in the autoimmune group (aHR = 0.98, 95% CI = 0.95–1.00, $p = 0.04$), and the association with acute rejection was not significant in both subgroups. In addition, a male

donor increased the risk of acute rejection in the nonautoimmune subgroup (aHR = 1.66, 95% CI = 1.13–2.44, $p = 0.01$), and an association between rhesus mismatch and disease recurrence was found in the autoimmune subgroup (aHR = 2.43, 95% CI = 1.05–5.62, $p = 0.04$).

Subgroup analyses: Young patients with autoimmune indications

There were no formal interactions between PIRCHE-II and age or age 30 years or younger. However, the

TABLE 3 Procedure and matching baseline characteristics divided by PIRCHE-II quartiles

Baseline characteristics, procedure and matching	PIRCHE-II and ln(PIRCHE-II) quartiles				p
	[0, 55.5] [0, 4.03] n = 184	(55.5, 78.2] (4.03, 4.37] n = 185	(78.2, 108] (4.37, 4.69] n = 183	(108, 273] (4.69, 5.61] n = 184	
Procedure					
Graft type n/total	n/179	n/181	n/175	n/178	0.003
Full, n (%)	179 (100.0)	172 (95.0)	171 (97.7)	177 (99.4)	
Split, n (%)	0 (0.0)	9 (5.0)	4 (2.3)	1 (0.6)	
Donor type n/total	n/184	n/184	n/183	n/184	0.55
Deceased, n (%)	41 (22.3)	51 (27.7)	48 (26.2)	52 (28.3)	
Living, n (%)	142 (77.2)	133 (72.3)	135 (73.8)	132 (71.7)	
Living related, n (%)	1 (0.5)	0 (0.0)	0 (0.0)	0 (0.0)	
Cold ischemia time, h, median [range]	6.56 [3.27, 16.47]	6.20 [2.32, 13.92]	6.48 [2.90, 14.90]	6.57 [2.75, 14.80]	0.35
Warm ischemia time, h, median [range]	0.47 [0.25, 1.17]	0.47 [0.18, 1.17]	0.47 [0.23, 1.50]	0.48 [0.27, 1.42]	0.52
Total ischemia time, h, median [range]	6.98 [3.63, 17.63]	6.72 [2.67, 14.68]	7.07 [3.53, 15.38]	7.07 [3.22, 15.60]	0.39
Blood loss, L, median [range]	4.12 [0.00, 62.00]	3.50 [0.00, 39.00]	3.85 [0.50, 34.00]	3.50 [0.00, 58.00]	0.17
Donor–recipient matching, n/total (%)					
ABO mismatch	4/184 (2.2)	1/185 (0.5)	1/182 (0.5)	2/184 (1.1)	0.39
Rhesus mismatch	34/184 (18.5)	21/185 (11.4)	11/183 (6.0)	22/184 (12.0)	0.003
HBsAg mismatch	0/182 (0.0)	1/182 (0.5)	0/181 (0.0)	0/183 (0.0)	0.39
HCVAb mismatch	0/182 (0.0)	0/183 (0.0)	0/181 (0.0)	0/183 (0.0)	NA
CMVlgG mismatch	36/182 (19.8)	34/183 (18.6)	33/181 (18.2)	27/184 (14.7)	0.61
EBVlgG mismatch	8/163 (4.9)	3/163 (1.8)	6/156 (3.8)	5/165 (3.0)	0.48
HIVAb mismatch	0/182 (0.0)	0/182 (0.0)	0/180 (0.0)	0/176 (0.0)	NA

Abbreviations: ABO, blood group; CMVlgG, cytomegalovirus IgG; EBVlgG, Epstein-Barr virus IgG; HBsAg, hepatitis B surface antigen; HCVAb, hepatitis C virus antibody; HIVAb, human immunodeficiency virus antibody; ln(PIRCHE-II), natural logarithm of PIRCHE-II+1; NA, not available; PIRCHE-II Predicted Indirectly Recognizable HLA Epitopes II

multivariable subgroup analyses of patients with autoimmune indications and age 30 years or younger ($n = 31$) revealed an inverse association between ln(PIRCHE-II) with graft loss (12 events: aHR = 0.14, 95% CI = 0.03–0.63, $p = 0.01$). No such association was observed for the HLA Matchmaker score. The ln(PIRCHE-II) score was not associated with acute rejection (14 events). Donor age was associated with decreased graft loss (aHR = 0.95, 95% CI = 0.90–1.00, $p = 0.049$). Insufficient events occurred to reliably determine associations with mortality (5 events), chronic rejection (3 events), ischemic cholangiopathy (2 events), and disease recurrence (6 events).

Immunosuppressants

Finally, in the full cohort, no statistically significant interactions were found between ln(PIRCHE-II) and the most common individual induction therapy drugs (steroids, basiliximab, MMF, tacrolimus, and cyclosporin) for

any of the primary outcomes in the multivariable analyses. Similarly, these interactions were not present for the HLA Matchmaker score.

DISCUSSION

In this single-center retrospective cohort study of 736 first liver transplantations, we investigated whether the PIRCHE-II score is a predictor of liver transplantation outcomes. For comparison, we also performed all analyses using the HLA Matchmaker score.

We found no associations between PIRCHE-II scores and mortality, graft loss, acute rejection, chronic rejection, ischemic cholangiopathy, or disease recurrence. Furthermore, we found no associations in the subgroups of patients with and without autoimmune indications. Similarly, there were no associations of HLA Matchmaker score with any of the outcomes in the full cohort and subgroups. The finding that both scores overall did not predict transplantation outcomes confirms previous

TABLE 4 Details of follow-up divided by PIRCHE-II quartiles

Follow-up	PIRCHE-II and ln(PIRCHE-II) quartiles				p
	[0, 55.5]	(55.5, 78.2]	(78.2, 108]	(108, 273]	
	[0, 4.03]	(4.03, 4.37]	(4.37, 4.69]	(4.69, 5.61]	
	n = 184	n = 185	n = 183	n = 184	
Deceased, n/total (%)	52/180 (28.9)	57/182 (31.3)	65/179 (36.3)	49/180 (27.2)	0.27
Age of death, years, mean (SD)	55.87 (12.26)	59.26 (10.43)	57.95 (9.29)	57.61 (12.17)	0.45
Cause of death n/total	n/52	n/57	n/65	n/49	0.64
Postoperative complications, n (%)	8 (15.4)	11 (19.3)	14 (21.5)	7 (14.3)	
Graft related, n (%)	11 (21.2)	10 (17.5)	11 (16.9)	4 (8.2)	
Medical comorbidity, n (%)	18 (34.6)	22 (38.6)	22 (33.8)	24 (49.0)	
Malignancy, de novo, n (%)	7 (38.9)	13 (59.1)	9 (40.9)	9 (37.5)	
Infection/sepsis, n (%)	5 (27.8)	4 (18.2)	7 (31.8)	7 (29.2)	
Organ failure, excluding liver, n (%)	2 (11.1)	0 (0.0)	2 (9.1)	2 (8.3)	
Hemorrhage, excluding cerebral, n (%)	3 (16.7)	1 (4.5)	0 (0.0)	1 (4.2)	
Cardiac event, n (%)	0 (0.0)	2 (9.1)	1 (4.5)	2 (8.3)	
Stroke, n (%)	1 (5.6)	1 (4.5)	2 (9.1)	1 (4.2)	
Other comorbidity, n (%)	0 (0.0)	1 (4.5)	1 (4.5)	2 (8.3)	
Procedure related, n (%)	5 (9.6)	2 (3.5)	2 (3.1)	2 (4.1)	
Recurrence: malignancy, n (%)	7 (13.5)	6 (10.5)	6 (9.2)	7 (14.3)	
Recurrence: primary disease, n (%)	0 (0.0)	4 (7.0)	5 (7.7)	2 (4.1)	
Other, n (%)	2 (3.8)	1 (1.8)	2 (3.1)	3 (6.1)	
Unknown, n (%)	1 (1.9)	1 (1.8)	3 (4.6)	0 (0.0)	
Re-Tx, n (%)	21 (11.4)	22 (11.9)	28 (15.3)	20 (10.9)	0.57
Loss to follow-up, n (%)	7 (3.8)	6 (3.2)	5 (2.7)	4 (2.2)	0.82
Ischemic cholangiopathy, n (%)	11 (6.0)	13 (7.0)	10 (5.5)	13 (7.1)	0.90
Acute rejection, n (%)	51 (27.7)	48 (25.9)	53 (29.0)	51 (27.7)	0.94
RAI, mean (SD)	5.00 (1.29)	4.82 (1.21)	4.92 (1.51)	5.25 (1.20)	0.40
Chronic rejection, n (%)	6 (3.3)	6 (3.2)	12 (6.6)	5 (2.7)	0.21
Disease recurrence, n (%)	18 (9.8)	26 (14.1)	22 (12.0)	24 (13.0)	0.63
Induction therapy regimen, n (%)					0.39
Steroids + calcineurin inhibitor	3 (1.6)	4 (2.2)	11 (6.0)	5 (2.7)	
Steroids + calcineurin inhibitor + IL2 inhibitor	49 (26.6)	61 (33.0)	62 (33.9)	63 (34.2)	
Steroids + calcineurin inhibitor + IL2 inhibitor + MMF	5 (2.7)	5 (2.7)	5 (2.7)	8 (4.3)	
Steroids + calcineurin inhibitor + MMF	11 (6.0)	9 (4.9)	14 (7.7)	11 (6.0)	
Steroids + IL2 inhibitor + MMF	99 (53.8)	97 (52.4)	83 (45.4)	89 (48.4)	
None	4 (2.2)	1 (0.5)	2 (1.1)	2 (1.1)	
Other (n < 10)	13 (7.1)	8 (4.3)	6 (3.3)	6 (3.3)	

Abbreviations: IL2, interleukin 2; ln(PIRCHE-II), natural logarithm of PIRCHE-II+1; MMF, mycophenolate mofetil; PIRCHE-II, Predicted Indirectly Recognizable HLA Epitopes II; RAI, rejection activity index; SD, standard deviation; Tx, transplantation.

failures to show consistent advantages of HLA matching and is in line with results from a review of different studies on HLA matching and liver transplantation.^[35] It also aligns with the current recommendation to not routinely use HLA matching for liver transplantation.

We found an important role for the activated immune system in patients who received transplants for

autoimmune indications. These patients had a 74% (univariate) or 63% (multivariable) increase in risk of acute rejection and a 47% (univariate) increase in risk of graft loss, independent of PIRCHE-II or HLA-Matchmaker scores. We further found a negative association between age and graft loss, which was most pronounced in the autoimmune group and may

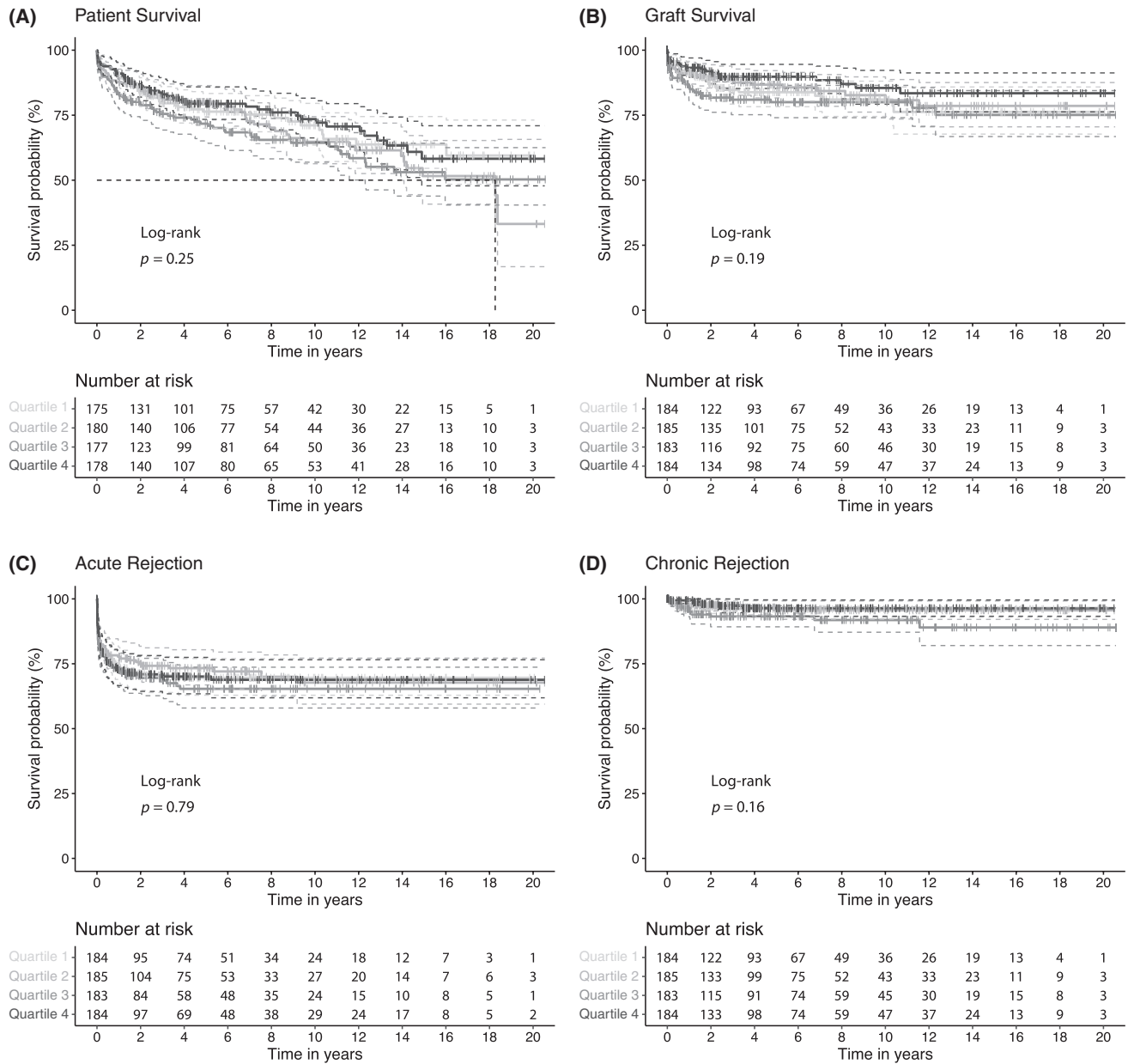


FIGURE 2 Kaplan–Meier curves for quartiles of the natural logarithm of PIRCHE-II+1 of (A) patient survival (excluding procedure-related death), (B) graft survival, (C) acute rejection, and (D) chronic rejection: quartile 1 = [0, 4.03], quartile 2 = (4.03, 4.37], quartile 3 = (4.37, 4.69], and quartile 4 = (4.69, 5.61]

TABLE 5 Univariable and multivariable Cox regression analyses for $\ln(\text{PIRCHE-II})$ on the primary outcomes mortality (excluding procedure related), graft loss, acute rejection, chronic rejection, and ischemic cholangiopathy

Cox regression for $\ln(\text{PIRCHE-II})$ versus outcome	Univariable		Multivariable		Events per total n
	HR (95% CI)	p	aHR (95% CI)	p	
Mortality	1.03 (0.81–1.31)	0.80	0.99 (0.78–1.26)	0.96	212/710
Graft loss	0.88 (0.65–1.19)	0.40	0.91 (0.67–1.24)	0.56	113/736
Acute rejection	1.10 (0.86–1.41)	0.46	1.17 (0.91–1.51)	0.21	203/726
Chronic rejection	1.11 (0.57–2.14)	0.76	1.11 (0.57–2.16)	0.75	29/736
Ischemic cholangiopathy	0.99 (0.60–1.63)	0.97	1.05 (0.63–1.76)	0.85	46/735

Abbreviations: aHR, adjusted hazard ratio; CI, confidence interval; HR, hazard ratio; $\ln(\text{PIRCHE-II})$, natural logarithm of PIRCHE-II+1; PIRCHE-II, Predicted Indirectly Recognizable HLA Epitopes II

TABLE 6 Univariable and multivariable Cox regression analyses for HLA Matchmaker scores on the primary outcomes mortality (excluding procedure related), graft loss, acute rejection, chronic rejection, and ischemic cholangiopathy

Cox regression for HLA Matchmaker versus outcomes	Univariable		Multivariable		Events per total <i>n</i>
	HR (95% CI)	<i>p</i>	aHR (95% CI)	<i>p</i>	
Mortality	1.02 (0.92–1.13)	0.72	1.04 (0.93–1.17)	0.44	212/710
Graft loss	1.04 (0.90–1.21)	0.56	1.02 (0.88–1.19)	0.75	113/736
Acute rejection	1.11 (0.99–1.24)	0.07	1.09 (0.98–1.21)	0.13	203/726
Chronic rejection	1.03 (0.77–1.38)	0.83	1.03 (0.76–1.38)	0.86	29/736
Ischemic cholangiopathy	0.99 (0.79–1.26)	0.96	1.01 (0.80–1.27)	0.95	46/735

Note: aHR and HR given per 10-point increase of HLA Matchmaker score.

Abbreviations: aHR, adjusted hazard ratio; CI, confidence interval; HR, hazard ratio; ln(PIRCHE-II), natural logarithm of PIRCHE-II+1; PIRCHE-II, Predicted Indirectly Recognizable HLA Epitopes II

TABLE 7 Logistic regression analyses for ln(PIRCHE-II) on the primary outcomes mortality (excluding procedure related), graft loss, acute rejection, chronic rejection, and ischemic cholangiopathy at the follow-up time points of 1 year, 2 years, and 5 years

Logistic regression for ln(PIRCHE-II) versus outcomes	OR (95% CI)	<i>p</i>	Events per total <i>n</i>
Mortality			
1 year	1.01 (0.65–1.55)	0.98	73/720
2 years	0.96 (0.65–1.40)	0.82	98/719
5 years	0.97 (0.70–1.34)	0.84	146/720
Graft loss			
1 year	0.93 (0.60–1.44)	0.75	70/720
2 years	0.88 (0.60–1.30)	0.54	88/719
5 years	0.87 (0.60–1.25)	0.44	101/719
Acute rejection			
1 year	1.11 (0.81–1.52)	0.50	174/732
2 years	1.05 (0.78–1.42)	0.73	189/731
5 years	1.06 (0.79–1.42)	0.68	199/730
Chronic rejection			
1 year	0.64 (0.31–1.33)	0.24	16/732
2 years	1.02 (0.47–2.19)	0.96	22/731
5 years	1.07 (0.52–2.19)	0.85	26/729
Ischemic cholangiopathy			
1 year	1.08 (0.57–2.08)	0.81	32/730
2 years	1.28 (0.67–2.45)	0.46	35/729
5 years	0.99 (0.56–1.73)	0.96	41/727

Abbreviations: CI, confidence interval; OR, odds ratio; PIRCHE-II, Predicted Indirectly Recognizable HLA Epitopes II; ln(PIRCHE-II), natural logarithm of PIRCHE-II+1

well result from decreasing reactivity of the immune system with increasing age. It was previously proposed that HLA matching could have adverse effects for patients with autoimmune diseases.^[32] Although we did not find this in the full subgroup of recipients with autoimmune diseases, we observed an inverse

association between PIRCHE-II and graft loss, thus a decreased risk of graft loss upon higher mismatch in young patients (30 years and younger). This may be explained by the autoreactivity in this group of patients, where more mismatches lower the risk of a recurring autoimmune reaction. We would also expect an inverse association with disease recurrence, but there were insufficient events in this subgroup to reach statistical significance. We further found that rhesus mismatch more than doubled the risk of autoimmune disease recurrence, putatively through further activation of the immune system. Interestingly, this is not among the known risk factors for autoimmune disease recurrence. To improve transplantation outcomes for autoimmune disease, it may thus be advisable to transplant a donor liver that is PIRCHE-II mismatched but rhesus matched.

Donor preformed and anti-HLA dnDSA have been shown to correlate with rejection in kidney,^[36] heart,^[37] pancreas,^[38] and lung^[37] transplantations.^[31] Concordantly, it was recently shown that patients with class II anti-HLA dnDSA following liver transplantation had higher PIRCHE-II scores^[30] and that PIRCHE-II and HLA Matchmaker scores predict class II anti-HLA dnDSA formation after liver transplantation.^[31] In our cohort, we found no association between PIRCHE-II and rejection. Unfortunately, we did not have anti-HLA DSA information for the patients in our study to confirm such an association between PIRCHE-II and anti-HLA dnDSA.

It remains possible that associations between ln(PIRCHE-II) and any of the primary outcomes were masked by drug-induced immune suppression. However, the absence of interactions between ln(PIRCHE-II) and the individual immunosuppressant drugs used suggests that any such influence would be evenly spread over the cohort because most patients received similar combinations of induction therapy. A previous study of 41 patients undergoing calcineurin inhibitor withdrawal found that those with PIRCHE-II scores <68 (or ln(PIRCHE-II) 4.23) had a significantly decreased risk of graft loss compared with those with

scores PIRCHE-II ≥ 68 .^[39] Because of the retrospective nature of our study, it was not possible to accurately detect changes in (dosage) of medication and therapy withdrawal.

Our study stands out in the inclusion and follow-up of a large number of patients, the length of follow-up, the variety of primary transplantation indications, robustness of outcome parameters, and completeness of the data. Limitations of our study include the single-center, retrospective design; the absence of anti-HLA DSA information; and limited patient numbers in some of the analyzed subgroups.

In conclusion, we found no associations between PIRCHE-II and HLA Matchmaker scores and mortality, graft loss, acute rejection, chronic rejection, ischemic cholangiopathy, or disease recurrence in our single-center cohort of primary liver transplantations. This implies that HLA matching is not needed for upcoming biobankable liver cell sources, which greatly facilitates the generation of a biobank. Our findings of inverse associations between liver transplantation outcomes and age, especially in patients who received transplants for autoimmune disease, suggest that the activity of the immune system plays an important role and that PIRCHE-II may be an inverse predictor of liver graft loss in younger patients (age 30 years and younger) with autoimmune diseases. Further studies are needed to evaluate whether PIRCHE-II mismatching and rhesus matching should be used to improve outcomes for (young) patients with autoimmune disease.

ACKNOWLEDGMENTS

The authors thank Sylvia de Visser-de Vlaming for her significant help with collection of the patient data and Remi Mahmoud and Simone Uniken Venema for guidance with the statistical analyses.

CONFLICT OF INTEREST

The University Medical Center Utrecht has filed a patent application on the prediction of an alloimmune response against mismatched human leukocyte antigen. Dr. Spierings is listed as inventor on this patent. The other authors declare to have no conflicts of interest.

AUTHOR CONTRIBUTIONS

Sabine A. Fuchs, Eric Spierings, and Luc J. W. van der Laan conceptualized the study. Gautam Kok designed the database, collected the data, performed the analyses, and wrote the manuscript. Monique M. A. Verstegen and Luc J. W. van der Laan provided access to patient records. Herold J. Metselaar, Caroline M. den Hoed, and Wojciech G. Polak were involved in the clinical care of the patients. Roderick H. J. Houwen, Caroline M. den Hoed, and Edward E. S. Nieuwenhuis provided further clinical insights. Eric Spierings provided access to the Predicted Indirectly Recognizable HLA Epitopes II (PIRCHE-II) platform and calculated

PIRCHE-II and HLA Matchmaker scores. All authors checked and edited the final version of the manuscript.

ETHICAL APPROVAL

This study was performed with medical ethical approval granted by the Medical Ethics Committee of Erasmus University Medical Center (Erasmus MC), Rotterdam (MEC-2014-060). Written informed consent for use of anonymized patient records for scientific research purposes was obtained from all patients prior to transplantation.

DATA AVAILABILITY STATEMENT

Syntax and output from analyses can be shared upon reasonable request to the corresponding author. Access to individual patient data is restricted.

ORCID

Gautam Kok  <https://orcid.org/0000-0002-4285-3381>

Monique M. A. Verstegen  <https://orcid.org/0000-0001-9908-6673>

Luc J. W. van der Laan  <https://orcid.org/0000-0002-0651-5334>

REFERENCES

- Opelz G. Effect of HLA matching in 10,000 cyclosporine-treated cadaver kidney transplants. *Transplant Proc.* 1987;19:641–6.
- Opelz G. Importance of HLA antigen splits for kidney transplant matching. *Lancet.* 1988;332:61–4.
- Anasetti C, Amos D, Beatty PG, Appelbaum FR, Bensinger W, Buckner CD, et al. Effect of HLA compatibility on engraftment of bone marrow transplants in patients with leukemia or lymphoma. *N Engl J Med.* 1989;320:197–204.
- Gjertson DW, Terasaki PI, Takemoto S, Mickey MR. National allocation of cadaveric kidneys by HLA matching. *N Engl J Med.* 1991;324:1032–6.
- Opelz G. Effect of HLA matching in heart transplantation. *Transplant Proc.* 1989;21:794–6.
- Beatty PG, Anasetti C, Hansen JA, Longton GM, Sanders JE, Martin PJ, et al. Marrow transplantation from unrelated donors for treatment of hematologic malignancies: effect of mismatching for one HLA locus. *Blood.* 1993;81:249–53.
- Gubernatis G, Kemnitz J, Tusch G, Pichlmayr R. HLA compatibility and different features of liver allograft rejection. *Transpl Int.* 1988;1:155–60.
- Markus BH, Duquesnoy RJ, Gordon RD, Fung JJ, Vanek M, Kilntmalm G, et al. Histocompatibility and liver transplant outcome. Does HLA exert a dualistic effect? *Transplantation.* 1988;46:372–7.
- O'Grady JG, Sutherland S, Harvey F, Calne RY, Alexander GJM, Donaldson PT, et al. Cytomegalovirus infection and donor/recipient HLA antigens: interdependent co-factors in pathogenesis of vanishing bile-duct syndrome after liver transplantation. *Lancet.* 1988;332:302–5.
- Chen M, Wade J, Levy GA, Greig PD. Effect of HLA matching and T- and B-cell crossmatch on acute rejection and graft survival following liver transplantation. *Transplant Proc.* 1994;26:2695–6.
- Nikaein A, Backman L, Jennings L, Levy MF, Goldstein R, Gonwa T, et al. HLA compatibility and liver transplant outcome: improved patient survival by HLA and cross-matching. *Transplantation.* 1994;58:786–92.

12. Balan V, Ruppert K, Demetris AJ, Ledneva T, Duquesnoy RJ, Detre KM, et al. Long-term outcome of human leukocyte antigen mismatching in liver transplantation: results of the National institute of diabetes and digestive and kidney diseases liver transplantation database. *Hepatology*. 2008;48:878–88.
13. Jadowiec CC, Taner T. Liver transplantation: current status and challenges. *World J Gastroenterol*. 2016;22:4438–45.
14. Kruitwagen HS, Oosterhoff LA, van Wolferen ME, Chen, Nantasanti Assawarachan S, Schneeberger K, Kummeling A, et al. Long-term survival of transplanted autologous canine liver organoids in a COMMD1-deficient dog model of metabolic liver disease. *Cells*. 2020;9:410.
15. Duquesnoy RJ. HLAMatchmaker: a molecularly based algorithm for histocompatibility determination. I. Description of the algorithm. *Hum Immunol*. 2002;63:339–52.
16. Duquesnoy RJ. A structurally based approach to determine HLA compatibility at the humoral immune level. *Hum Immunol*. 2006;67:847–62.
17. Duquesnoy RJ. Clinical usefulness of HLAMatchmaker in HLA epitope matching for organ transplantation. *Curr Opin Immunol*. 2008;20:594–601.
18. Wiebe C, Pochinco D, Blydt-Hansen TD, Ho J, Birk PE, Karpinski M, et al. Class II HLA epitope matching—a strategy to minimize de novo donor-specific antibody development and improve outcomes. *Am J Transplant*. 2013;13:3114–22.
19. Walton DC, Hiho SJ, Cantwell LS, Diviney MB, Wright ST, Snell GI, et al. HLA matching at the eplet level protects against chronic lung allograft dysfunction. *Am J Transplant*. 2016;16:2695–703.
20. Böhringer D, Daub F, Schwartzkopff J, Maier P, Birnbaum F, Sundmacher R, et al. Operational post-keratoplasty graft tolerance due to differential HLAMatchmaker matching. *Mol Vis*. 2010;16:2362–7.
21. Sullivan PM, Warner P, Kemna MS, Albers EL, Law SP, Weiss NS, et al. HLA molecular epitope mismatching and long-term graft loss in pediatric heart transplant recipients. *J Hear Lung Transplant*. 2015;34:950–7.
22. Ekong UD, Antala S, Bow L, Sese D, Morotti R, Rodriguez-Davalos M, et al. HLA, non-HLA antibodies, and eplet mismatches in pediatric liver transplantation: observations from a small, single-center cohort. *Exp Clin Transplant*. 2019;17 (Suppl 1):6–17.
23. Geneugelijk K, Spierings E. PIRCHE-II: an algorithm to predict indirectly recognizable HLA epitopes in solid organ transplantation. *Immunogenetics*. 2020;72:119–129.
24. Geneugelijk K, Thus KA, Spierings E. Predicting alloreactivity in transplantation. *J Immunol Res*. 2014;2014:1–12.
25. Geneugelijk K, Niemann M, Drylewicz J, van Zuilen AD, Joosten I, Allebes WA, et al. PIRCHE-II is related to graft failure after kidney transplantation. *Front Immunol*. 2018;9:321.
26. Lachmann N, Niemann M, Reinke P, Budde K, Schmidt D, Halleck F, et al. Donor-recipient matching based on predicted indirectly recognizable HLA epitopes independently predicts the incidence of de novo donor-specific HLA antibodies following renal transplantation. *Am J Transplant*. 2017;17:3076–86.
27. Sakamoto S, Iwasaki K, Tomosugi T, Niemann M, Spierings E, Miwa Y, et al. Analysis of T and B cell epitopes to predict the risk of de novo donor-specific antibody (DSA) production after kidney transplantation: a two-center retrospective cohort study. *Front Immunol*. 2020;11:2000.
28. Ladowski JM, Mullins H, Romine M, Kloda D, Young C, Hauptfeld-Dolejssek V, et al. Eplet mismatch scores and de novo donor-specific antibody development in simultaneous pancreas-kidney transplantation. *Hum Immunol*. 2021;82:139–46.
29. Chaigne B, Geneugelijk K, Bédât B, Ahmed MA, Hönger G, De Seigneux S, et al. Immunogenicity of anti-HLA antibodies in pancreas and islet transplantation. *Cell Transplant*. 2016;25:2041–50.
30. Meszaros M, Dubois V, Niemann M, Ursic-Bedoya J, Faure S, Guillaud O, et al. Class II human leukocyte antigen epitope mismatch predicts de novo donor-specific antibody formation after liver transplantation. *Liver Transpl*. 2019;25:184–5.
31. Hamada S, Dumortier J, Thévenin C, Pageaux G-P, Faure S, Guillaud O, et al. Predictive value of HLAMatchmaker and PIRCHE-II scores for de novo donor-specific antibody formation after adult and pediatric liver transplantation. *Transpl Immunol*. 2020;61:101306.
32. Neumann UP, Guckelberger O, Langrehr JM, Lang M, Schmitz V, Theruvath T, et al. Impact of human leukocyte antigen matching in liver transplantation. *Transplantation*. 2003;75:132–7.
33. Colvin MM, Smith CA, Tullius SG, Goldstein DR. Aging and the immune response to organ transplantation. *J Clin Invest*. 2017;127:2523–9.
34. Geneugelijk K, Wissing J, Koppelaar D, Niemann M, Spierings E. Computational approaches to facilitate epitope-based HLA matching in solid organ transplantation. *J Immunol Res*. 2017;2017:1–9.
35. Reddy MS, Varghese J, Venkataraman J, Rela M. Matching donor to recipient in liver transplantation: relevance in clinical practice. *World J Hepatol*. 2013;5:603–11.
36. Terasaki PI, Ozawa M, Castro R. Four-year follow-up of a prospective trial of HLA and MICA antibodies on kidney graft survival. *Am J Transplant*. 2007;7:408–15.
37. Morales-Buenrostro LE, Castro R, Terasaki PI. A single human leukocyte antigen-antibody test after heart or lung transplantation is predictive of survival. *Transplantation*. 2008;85:478–81.
38. Cantarovich D, De Amicis S, Akl A, Devys A, Vistolli F, Karam G, et al. Posttransplant donor-specific anti-HLA antibodies negatively impact pancreas transplantation outcome. *Am J Transplant*. 2011;11:2737–46.
39. Meszaros M, Niemann M, Ursic-Bedoya J, Faure S, Meunier L, Rivière B, et al. Exploring predicted indirectly recognizable HLA epitopes (PIRCHE-II) in liver transplant recipients on calcineurin inhibitor-free maintenance immunosuppression. A retrospective single center study. *Transpl Immunol*. 2020;59:101272.

SUPPORTING INFORMATION

Additional supporting information may be found in the online version of the article at the publisher's website.

How to cite this article: Kok G, Verstegen MMA, Houwen RHJ, Nieuwenhuis EES, Metselaar HJ, Polak WG, et al. Assessment of human leukocyte antigen matching algorithm PIRCHE-II on liver transplantation outcomes. *Liver Transpl*. 2022;28:1356–1366. <https://doi.org/10.1002/lt.26431>